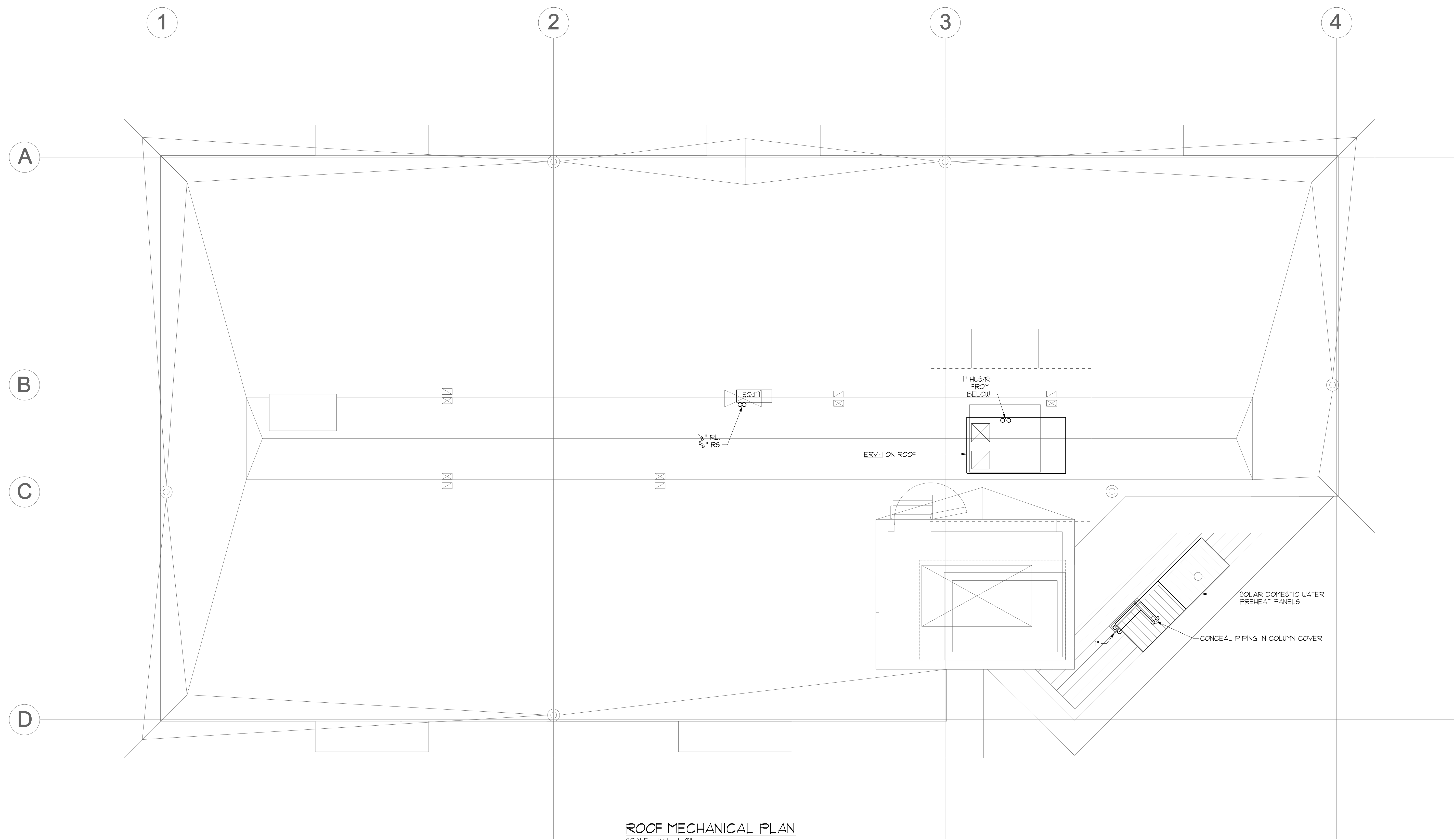
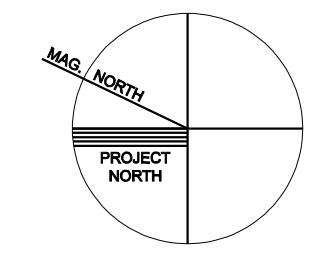


IT IS THE INTENT OF THE DRAWINGS AND SPECIFICATIONS TO PROVIDE FOR THE INSTALLATION OF A HEATING SYSTEM WHICH IS SAFE, QUIET, AND ECONOMICAL IN OPERATION AND COMPLETE IN ALL RESPECTS. THIS SYSTEM WILL PROVIDE A UNIFORM TEMPERATURE OF 18°F IN ALL LIVING SPACES AS MAY BE NOTED ON THE DRAWINGS. WHEN THE OUTSIDE TEMPERATURE IS 3°F, ALL MATERIALS AND EQUIPMENT NECESSARY TO ACCOMPLISH THE INTENT SHALL BE FURNISHED AND INSTALLED BY THE CONTRACTOR.



ROOF MECHANICAL PLAN
SCALE - 1/4" = 1'-0"



© 2007 TFH ARCHITECTS

BAYSIDE EAST
PROPOSED ELDERLY HOUSING
47 SMITH STREET, PORTLAND
FOR BAYSIDE EAST LP

TFH ARCHITECTS
100 COMMERCIAL STREET
PORTLAND MAINE 04101
TELEPHONE 207 775 6141
ARCHITECTURE PLANNING

CONSULTANTS:
BENNETT ENGINEERING
CONSULTING ENGINEERS
1000 BROAD STREET
PORTLAND, MAINE 04101

REVISIONS:

DATE: MAY 18, 2007
PROJECT No. 0514
DRAWN BY: JMV
CHECKED BY: SPDoel
SCALE: AS NOTED

SHEET TITLE:
ROOF MECHANICAL PLAN

M1.6