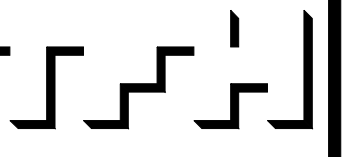


IT IS THE INTENT OF THE DRAWINGS AND SPECIFICATIONS TO PROVIDE FOR THE INSTALLATION OF A HEATING SYSTEM WHICH IS SAFE, QUIET, AND ECONOMICAL, IN OPERATION AND COMPLETE IN ALL RESPECTS. THIS SYSTEM WILL PROVIDE A UNIFORM TEMPERATURE OF 19°F IN ALL LIVING SPACES AS MAY BE NOTED ON THE DRAWINGS, WHEN THE OUTSIDE TEMPERATURE IS 3°F. ALL MATERIALS AND EQUIPMENT NECESSARY TO ACCOMPLISH THE INTENT SHALL BE FURNISHED AND INSTALLED BY THE CONTRACTOR.

© 2007 TFH ARCHITECTS

BAYSIDE EAST
 PROPOSED ELDERLY HOUSING
 47 SMITH STREET, PORTLAND
 FOR BAYSIDE EAST LP



TFH ARCHITECTS
 100 COMMERCIAL STREET
 PORTLAND MAINE 04101
 TELEPHONE 207 775 6141
 ARCHITECTURE PLANNING

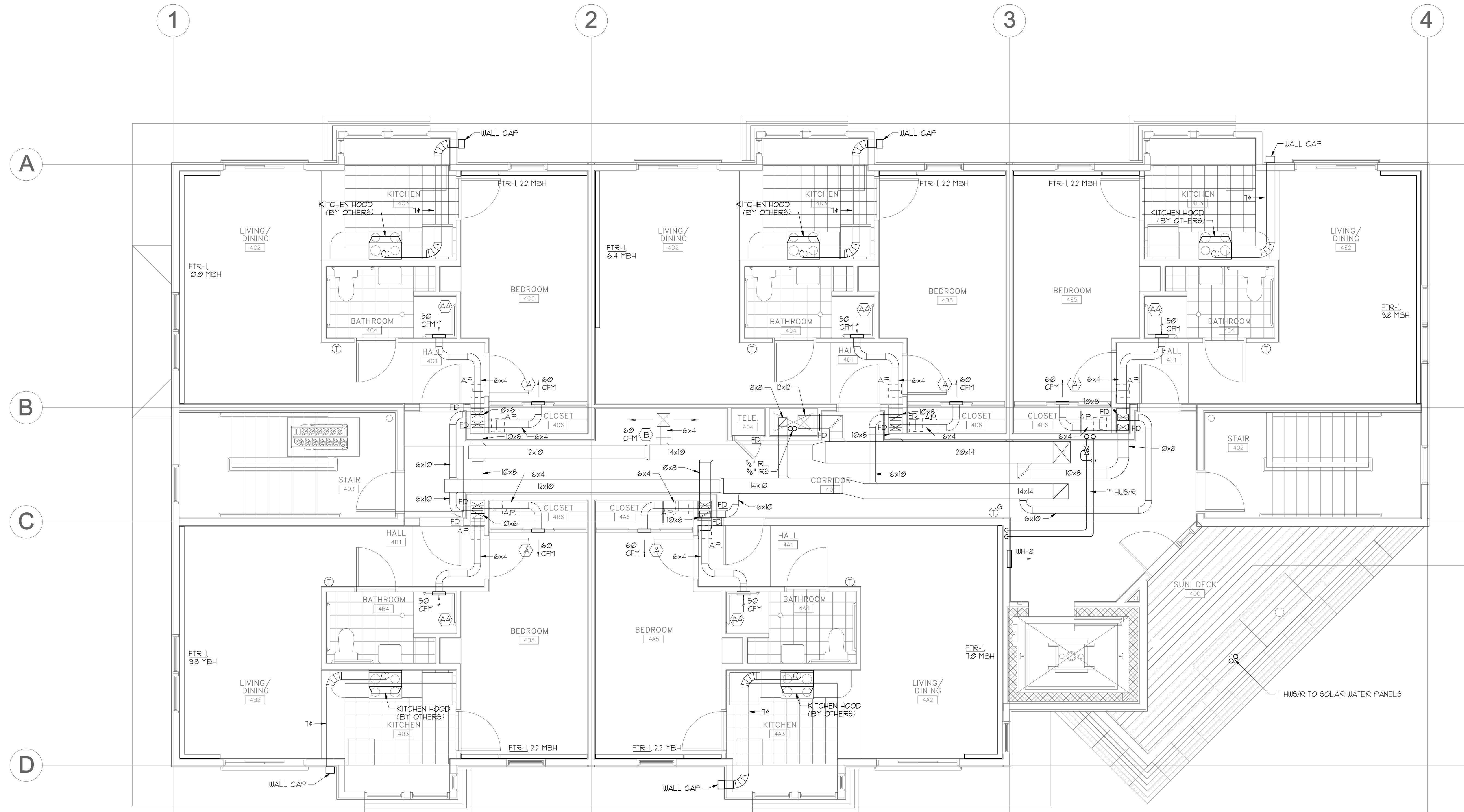
CONSULTANTS:
BENNETT ENGINEERING
 CONSULTING ENGINEERS
 100 STATE STREET
 PORTLAND, MAINE 04101
 TEL: 207 775 6141

REVISIONS:

DATE: MAY 18, 2007
 PROJECT No. 0514
 DRAWN BY: JMV
 CHECKED BY: SPDoeI
 SCALE: AS NOTED

SHEET TITLE:
FOURTH FLOOR MECHANICAL PLAN

M1.5



NOTES -
 1. BRANCH PIPING SERVING INDIVIDUAL UNITS, FINITUBE, WALL HEATERS OR CABINET UNIT HEATERS SHALL BE 3/4" UNLESS OTHERWISE NOTED.
 2. DUCTWORK IN UNITS SHALL BE INSTALLED IN SOFFITS BELOW THE RATED CEILING ASSEMBLY.

FOURTH FLOOR MECHANICAL PLAN
 SCALE - 1/4" = 1'-0"

