

IT IS THE INTENT OF THE DRAWINGS AND SPECIFICATIONS TO PROVIDE FOR THE INSTALLATION OF A HEATING SYSTEM WHICH IS SAFE, QUIET, AND ECONOMICAL IN OPERATION AND COMPLETE IN ALL RESPECTS. THIS SYSTEM WILL PROVIDE A UNIFORM TEMPERATURE OF 75°F IN ALL LIVING SPACES AS MAY BE NOTED ON THE DRAWINGS WHEN THE OUTSIDE TEMPERATURE IS 3°F. ALL MATERIALS AND EQUIPMENT NECESSARY TO ACCOMPLISH THE INTENT SHALL BE FURNISHED AND INSTALLED BY THE CONTRACTOR.

© 2007 TFH ARCHITECTS

**BAYSIDE EAST**  
 PROPOSED ELDERLY HOUSING  
 47 SMITH STREET, PORTLAND  
 FOR BAYSIDE EAST LP



TFH ARCHITECTS  
 100 COMMERCIAL STREET  
 PORTLAND MAINE 04101  
 TELEPHONE 207 775 6141  
 ARCHITECTURE PLANNING

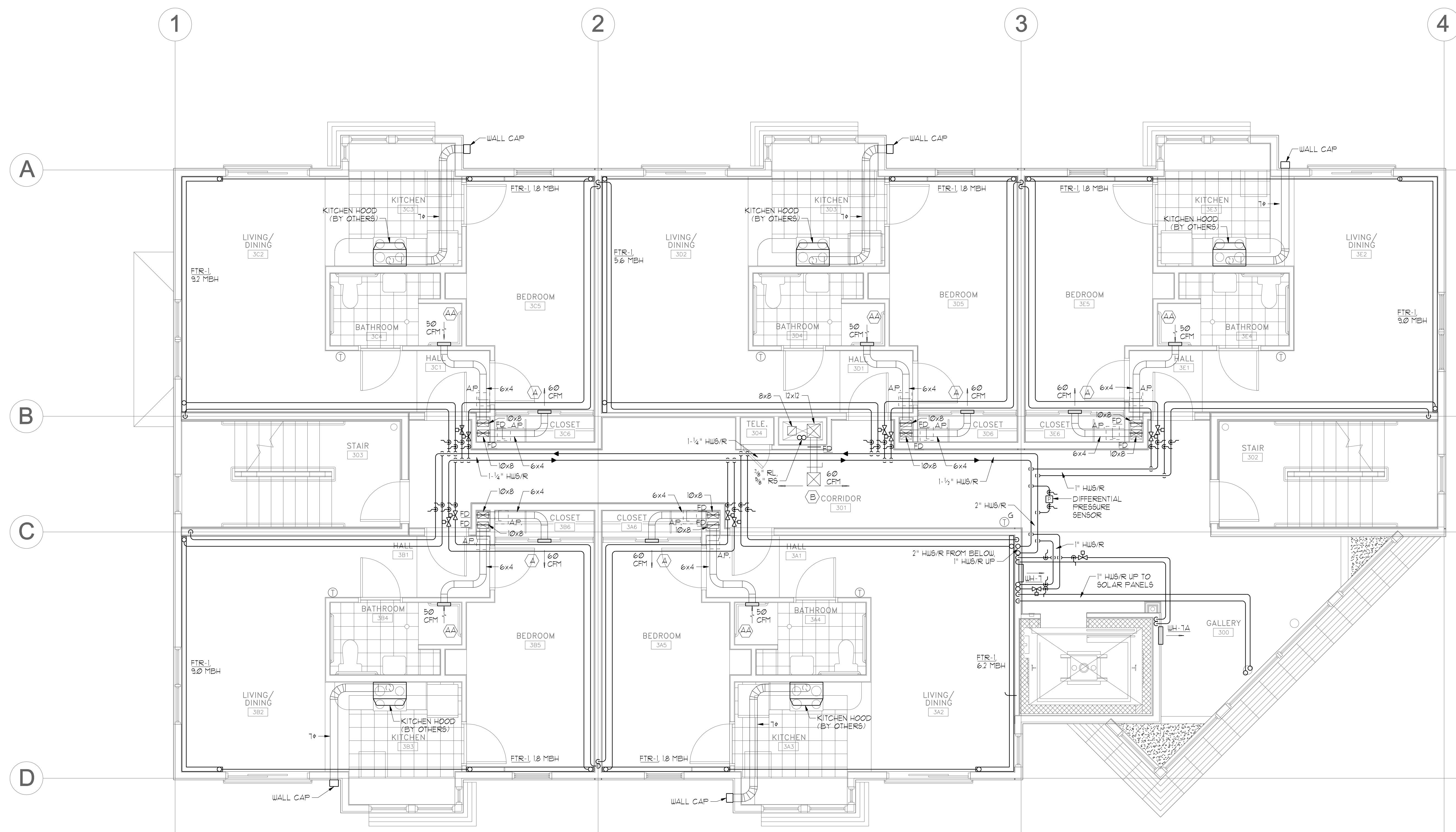
CONSULTANTS:  
**BENNETT ENGINEERING**  
 CONSULTING ENGINEERS  
 100 COMMERCIAL STREET  
 PORTLAND MAINE 04101  
 TELEPHONE 207 775 6141

REVISIONS:

DATE: MAY 18, 2007  
 PROJECT No. 0514  
 DRAWN BY: JMV  
 CHECKED BY: SPD/ael  
 SCALE: AS NOTED

SHEET TITLE:  
 THIRD FLOOR  
 MECHANICAL  
 PLAN

M1.4



**NOTES -**  
 1. BRANCH PIPING SERVING INDIVIDUAL UNITS, FIN-TUBE, WALL HEATERS OR CABINET UNIT HEATERS SHALL BE 1/4" UNLESS OTHERWISE NOTED.  
 2. DUCTWORK IN UNITS SHALL BE INSTALLED IN SOFFITS BELOW THE RATED CEILING ASSEMBLY.

**THIRD FLOOR MECHANICAL PLAN**  
 SCALE - 1/4" = 1'-0"

