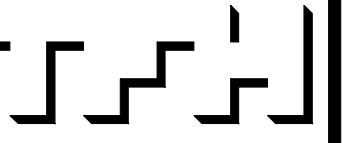


BAYSIDE EAST
PROPOSED ELDERLY HOUSING
47 SMITH STREET, PORTLAND
FOR BAYSIDE EAST LP



TFH ARCHITECTS
100 COMMERCIAL STREET
PORTLAND MAINE 04101
TELEPHONE 207 775 6141
ARCHITECTURE PLANNING

CONSULTANTS:
BENNETT ENGINEERING
CONSULTING ENGINEERS
1000 BROAD STREET
PORTLAND, MAINE 04101
TEL: 207 775 6141

REVISIONS:

DATE: MAY 18, 2007

PROJECT No. 0514

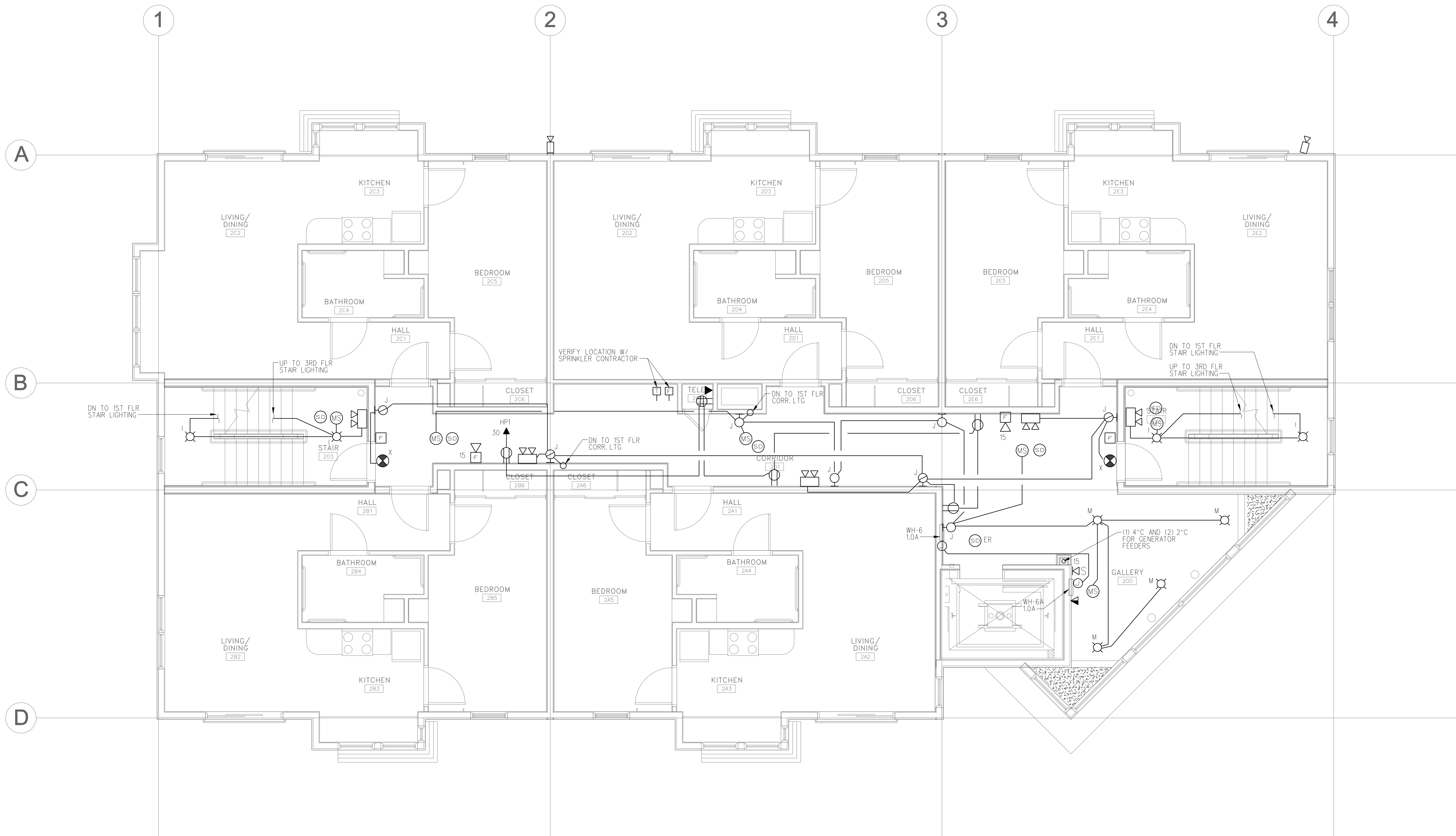
DRAWN BY: SPD

CHECKED BY: CWA

SCALE: AS NOTED

SHEET TITLE:
**SECOND FLOOR
ELECTRICAL
PLAN**

E2.4



SECOND FLOOR ELECTRICAL PLAN
SCALE: 1/4"=1'-0"

NOTES:

- 1. PROVIDE AIR-VAPOR BARRIER ELECTRICAL BOXES AT EXTERIOR WALLS. AIRFOIL OR EQUIVALENT VAPOR BARRIER SHALL BE SEALED TO FLANGE.

