

FIRST FLOOR ELECTRICAL PLAN

SCALE: 1/4"=1'-0"

GENERAL NOTES:

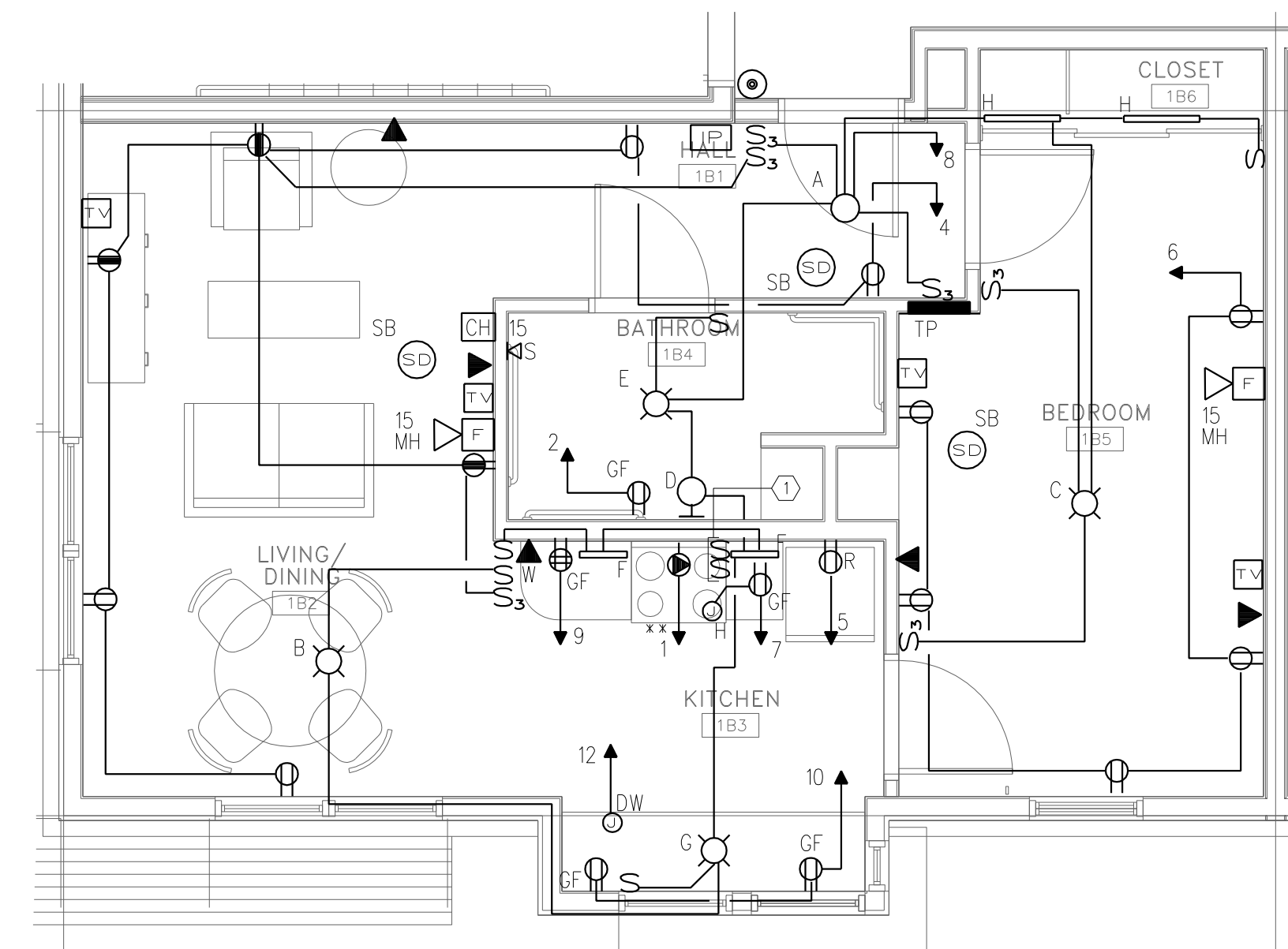
1. SWITCHES, OUTLETS, TEL JACKS AND TV JACKS TO BE STAGGERED IN COMMON WALLS BETWEEN UNITS - TYPICAL. PROVIDE PUTTY PADS IN INSTANCES WHERE DEVICES CANNOT BE PROPERLY STAGGERED.
2. ELECTRICAL PANELS IN ALL UNITS SHALL BE MOUNTED WITH TOP BREAKER NOT HIGHER THAN 48".
3. CONTRACTOR SHALL ROUGH IN BOXES IN ONEUNIT TYPE FOR REVIEW IN THE FIELD BY THE OWNER.
4. MINIMUM WIRE SIZE IS #12 AWG - #14 AWG WIRE IS NOT PERMITTED PER MSHA STANDARD.
5. PROVIDE AIR-VAPOR BARRIER ELECTRICAL BOXES AT EXTERIOR WALLS. AIRFOIL OR EQUIVALENT. VAPOR BARRIER SHALL BE SEALED TO FLANGE.

UNIT FIRE ALARM SEQUENCE NOTES:

1. ON BUILDING SYSTEM ACTIVATION ALL AUDIO/VISUAL AND VISUAL ONLY DEVICES SHALL ALARM.
2. WHEN UNIT SMOKE DETECTOR GOES INTO ALARM ALL AUDIO/VISUAL AND VISUAL ONLY DEVICES WITHIN THAT UNIT WILL ACTIVATE. THIS WILL NOT TRIP THE ENTIRE BUILDING SYSTEM. IT WILL ANNUNCIATE AT THE FACP.

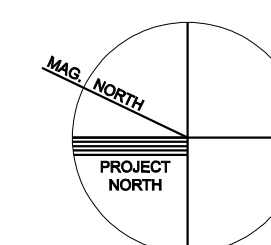
NOTES:

- ① HOOD AND FAN LIGHT SWITCHES TO BE MOUNTED AT COUNTER HEIGHT.

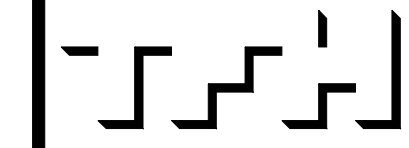


TYPICAL UNIT ELECTRICAL PLAN

SCALE: 1/4"=1'-0"



**BAYSIDE EAST**  
 PROPOSED ELDERLY HOUSING  
 47 SMITH STREET, PORTLAND  
 FOR BAYSIDE EAST LP



TFH ARCHITECTS  
 100 COMMERCIAL STREET  
 PORTLAND MAINE 04101  
 TELEPHONE 207 775 6141  
 ARCHITECTURE PLANNING

CONSULTANTS:  
**BENNETT ENGINEERING**  
 CONSULTING ENGINEERS  
Portland, ME • 2005-2006

REVISIONS:

DATE: MAY 18, 2007  
 PROJECT No. 0514  
 DRAWN BY: SPD  
 CHECKED BY: CWA  
 SCALE: AS NOTED

SHEET TITLE:  
 FIRST FLOOR  
 ELECTRICAL  
 PLAN &  
 TYPICAL UNIT  
 ELECTRICAL PLAN