

BAYSIDE EAST

PROPOSED ELDERLY HOUSING
47 SMITH STREET, PORTLAND
FOR BAYSIDE EAST LP

TFH ARCHITECTS
100 COMMERCIAL STREET
PORTLAND MAINE 04101
TELEPHONE 207 775 6141
ARCHITECTURE PLANNING

CONSULTANTS:
BENNETT ENGINEERING
CONSULTING ENGINEERS
100 STATE STREET
PORTLAND, MAINE 04101

REVISIONS:

DATE: MAY 18, 2007

PROJECT No. 0514

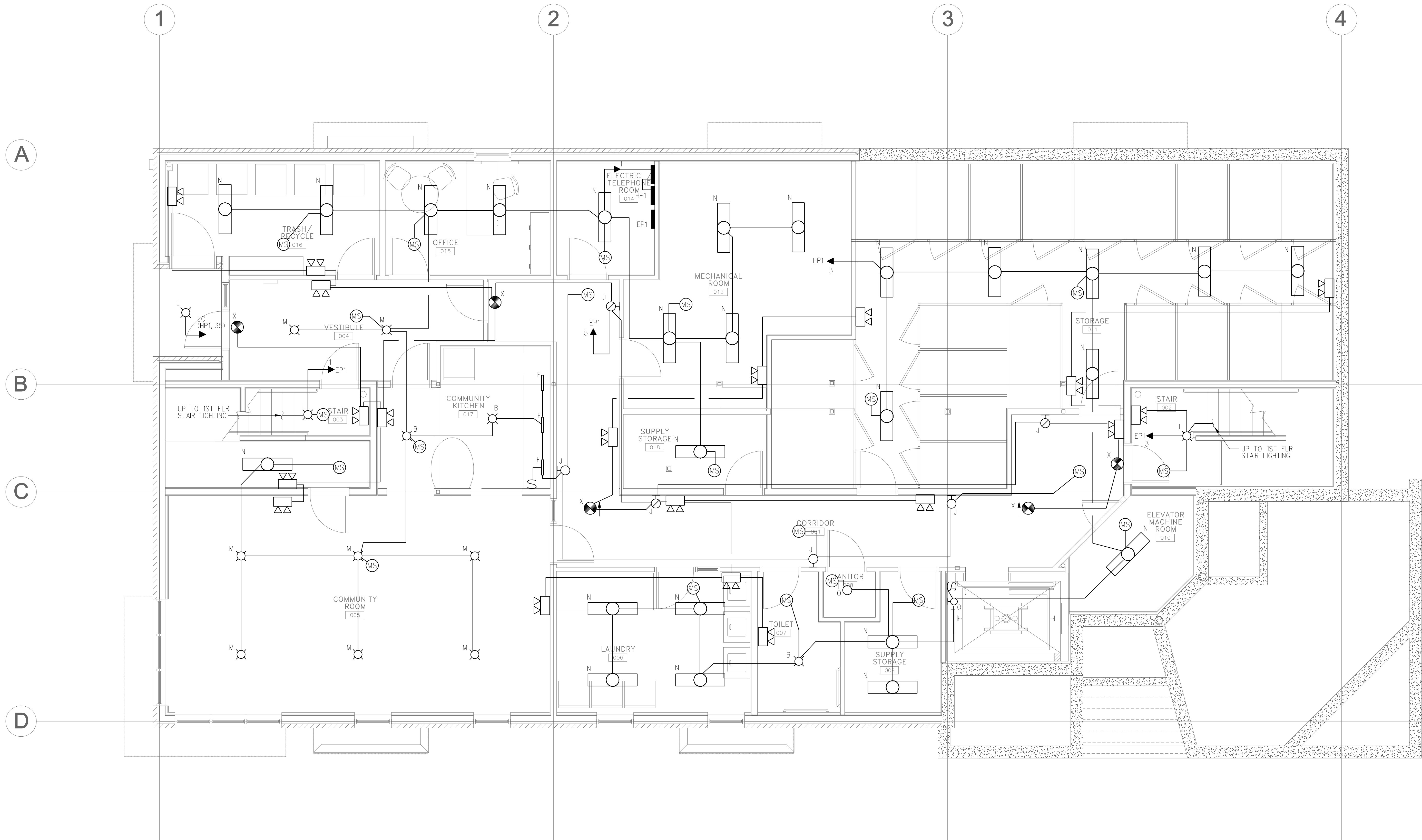
DRAWN BY: SPD

CHECKED BY: CWA

SCALE: AS NOTED

SHEET TITLE:
BASEMENT LIGHTING PLAN

E2.1



BASEMENT LIGHTING PLAN
SCALE: 1/4"=1'-0"

NOTES:

1. PROVIDE AIR-VAPOR BARRIER ELECTRICAL BOXES AT EXTERIOR WALLS. AIRFOIL OR EQUIVALENT, VAPOR BARRIER SHALL BE SEALED TO FLANGE.

