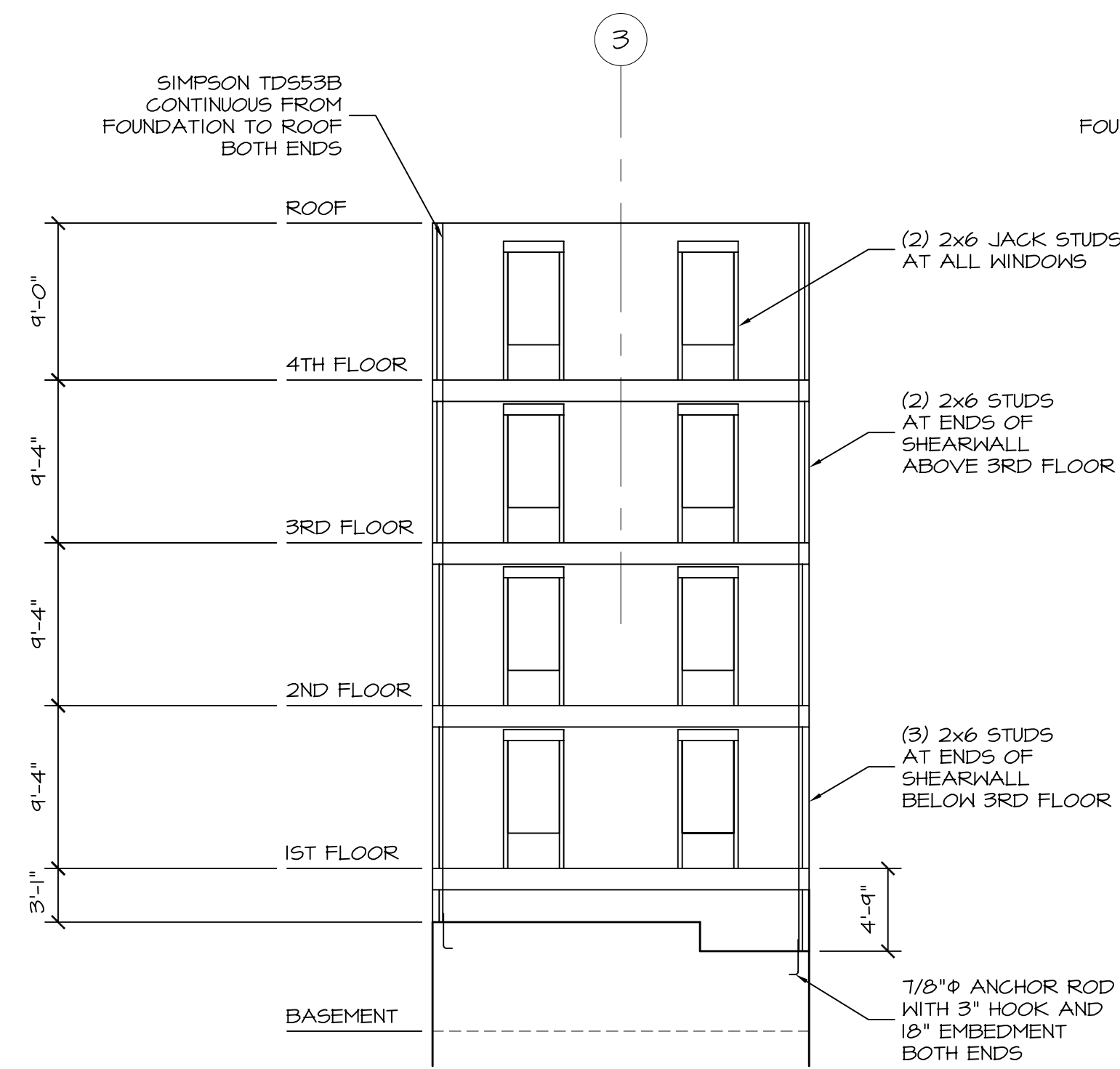


© 2007 TFH ARCHITECTS

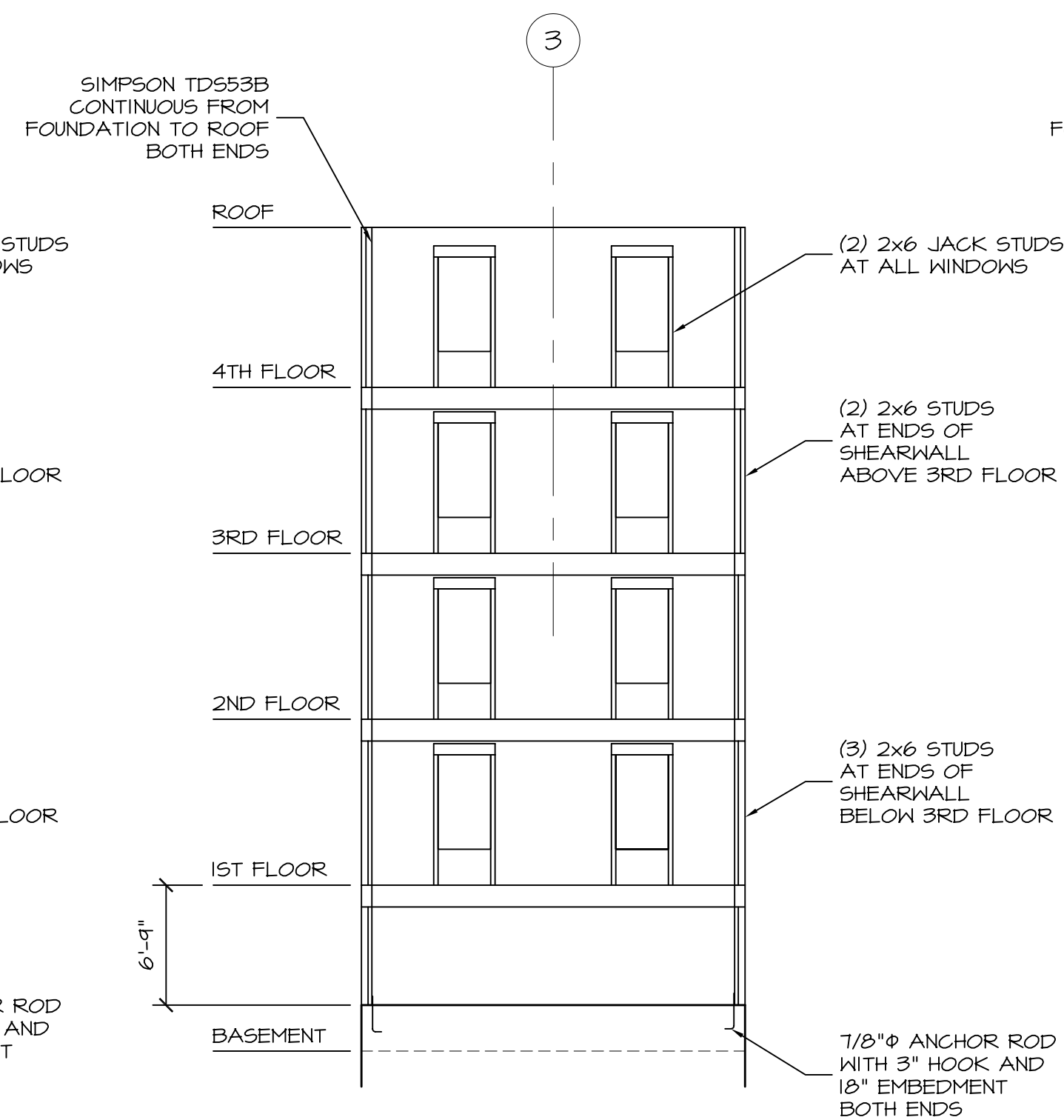
**BAYSIDE EAST**  
**PROPOSED ELDERLY HOUSING**  
**47 SMITH STREET, PORTLAND**  
**FOR BAYSIDE EAST LP**



**EAST SHEARWALL ELEVATION**  
 1/8"=1'-0"

SHEATHING AT SHEAR WALLS IS 5/8" CDX PLYWOOD NAILED AT PANEL EDGES WITH 10d NAILS SPACED AT 3" AND AT INTERMEDIATE SUPPORTS WITH 10d NAILS SPACED AT 12". STAGGER NAILS AT SHEARWALL ENDS BETWEEN MULTIPLE MULTIPLE STUDS.

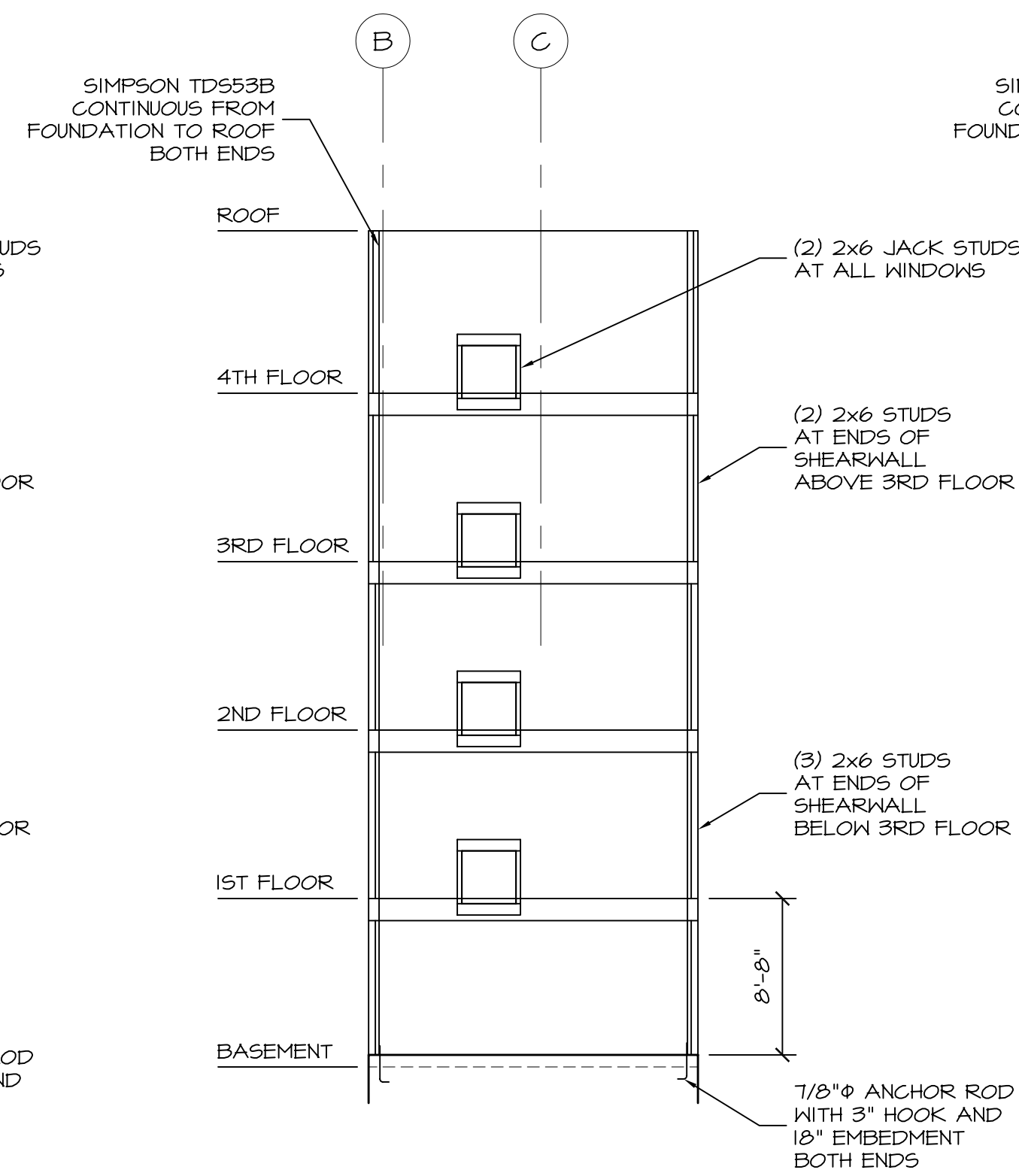
BLOCK ALL PANEL EDGES WITH 2x6 BLOCKING.



**WEST SHEARWALL ELEVATION**  
 1/8"=1'-0"

SHEATHING AT SHEAR WALLS IS 5/8" CDX PLYWOOD NAILED AT PANEL EDGES WITH 10d NAILS SPACED AT 3" AND AT INTERMEDIATE SUPPORTS WITH 10d NAILS SPACED AT 12". STAGGER NAILS AT SHEARWALL ENDS BETWEEN MULTIPLE MULTIPLE STUDS.

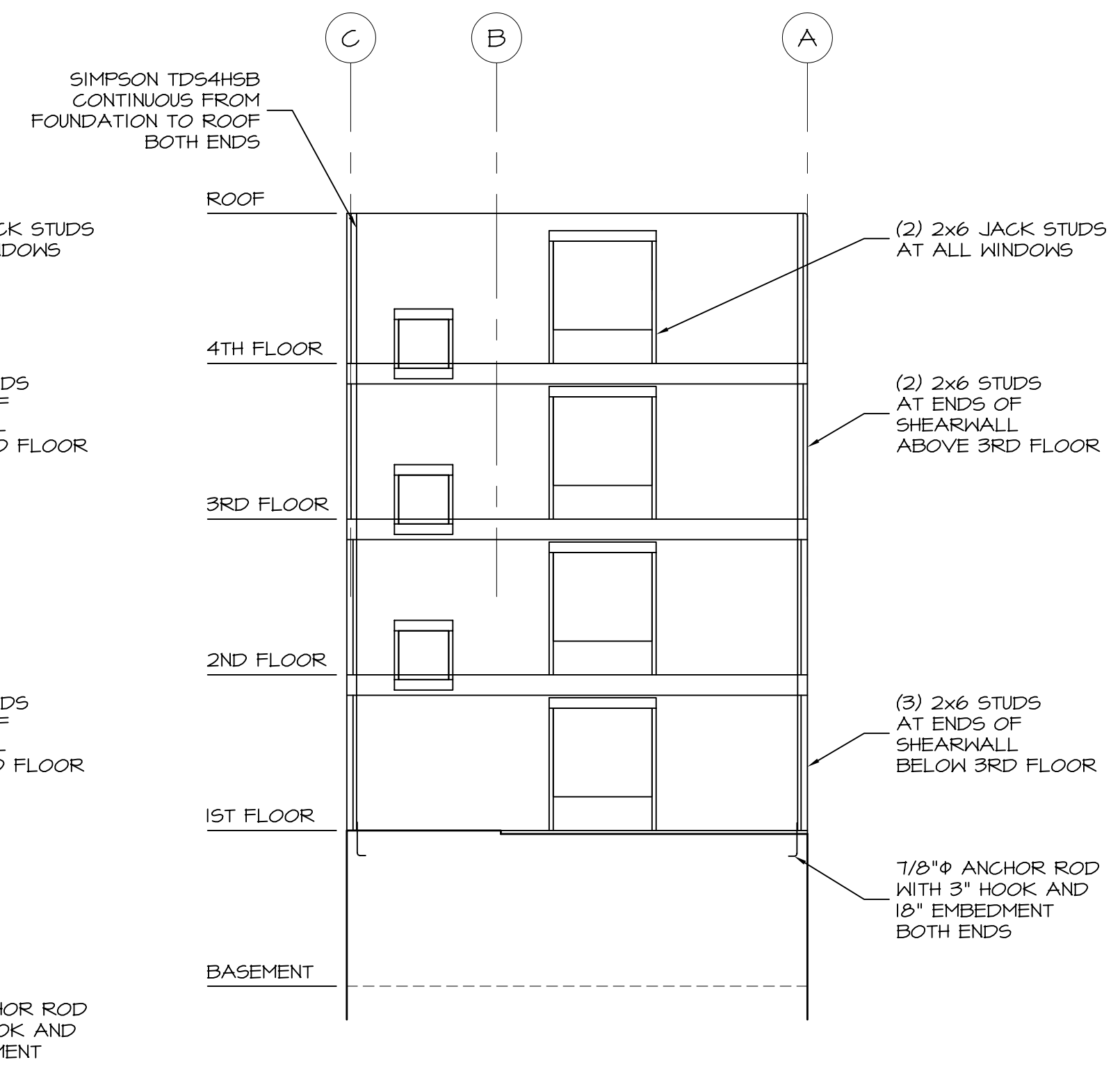
BLOCK ALL PANEL EDGES WITH 2x6 BLOCKING.



**NORTH SHEARWALL ELEVATION**  
 1/8"=1'-0"

SHEATHING AT SHEAR WALLS IS 5/8" CDX PLYWOOD NAILED AT PANEL EDGES WITH 10d NAILS SPACED AT 3" AND AT INTERMEDIATE SUPPORTS WITH 10d NAILS SPACED AT 12". STAGGER NAILS AT SHEARWALL ENDS BETWEEN MULTIPLE MULTIPLE STUDS.

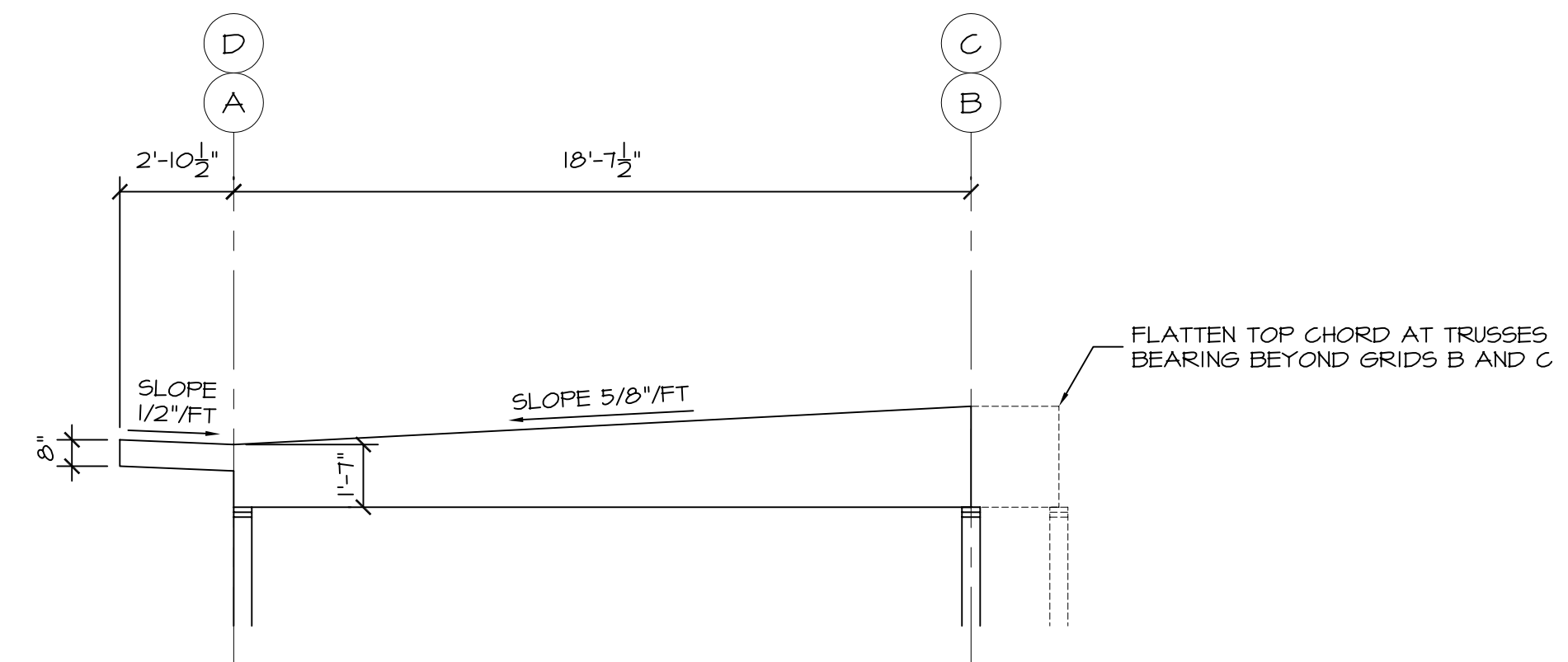
BLOCK ALL PANEL EDGES WITH 2x6 BLOCKING.



**SOUTH SHEARWALL ELEVATION**  
 1/8"=1'-0"

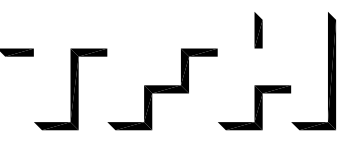
SHEATHING AT SHEAR WALLS IS 5/8" CDX PLYWOOD NAILED AT PANEL EDGES WITH 10d NAILS SPACED AT 3" AND AT INTERMEDIATE SUPPORTS WITH 10d NAILS SPACED AT 12". STAGGER NAILS AT SHEARWALL ENDS BETWEEN MULTIPLE MULTIPLE STUDS.

BLOCK ALL PANEL EDGES WITH 2x6 BLOCKING.

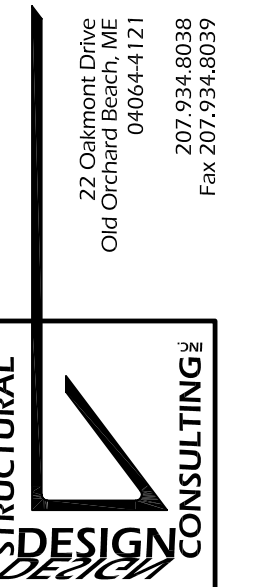


**TYPICAL ROOF TRUSS ELEVATION**  
 1/4"=1'-0"

ROOF TRUSS LOADING:  
 TOP CHORD  
 SNOW LOAD = 40 PSF  
 DEAD LOAD = 15 PSF  
 BOTTOM CHORD  
 DEAD LOAD = 10 PSF



TFH ARCHITECTS  
 100 COMMERCIAL STREET  
 PORTLAND MAINE 04101  
 TELEPHONE 207 775 6141  
 ARCHITECTURE PLANNING



REVISIONS:

DATE: MAY 18, 2007  
 PROJECT No. 07012  
 DRAWN BY: DJT  
 CHECKED BY: DJT  
 SCALE: AS NOTED

SHEET TITLE:  
**TRUSS AND SHEARWALL DETAILS**