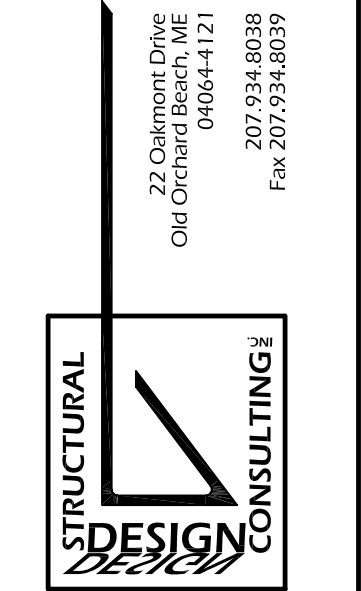


© 2007 TFH ARCHITECTS

BAYSIDE EAST
 PROPOSED ELDERLY HOUSING
 47 SMITH STREET, PORTLAND
 FOR BAYSIDE EAST LP

TFH ARCHITECTS
 100 COMMERCIAL STREET
 PORTLAND MAINE 04101
 TELEPHONE 207 775 6141
 ARCHITECTURE PLANNING

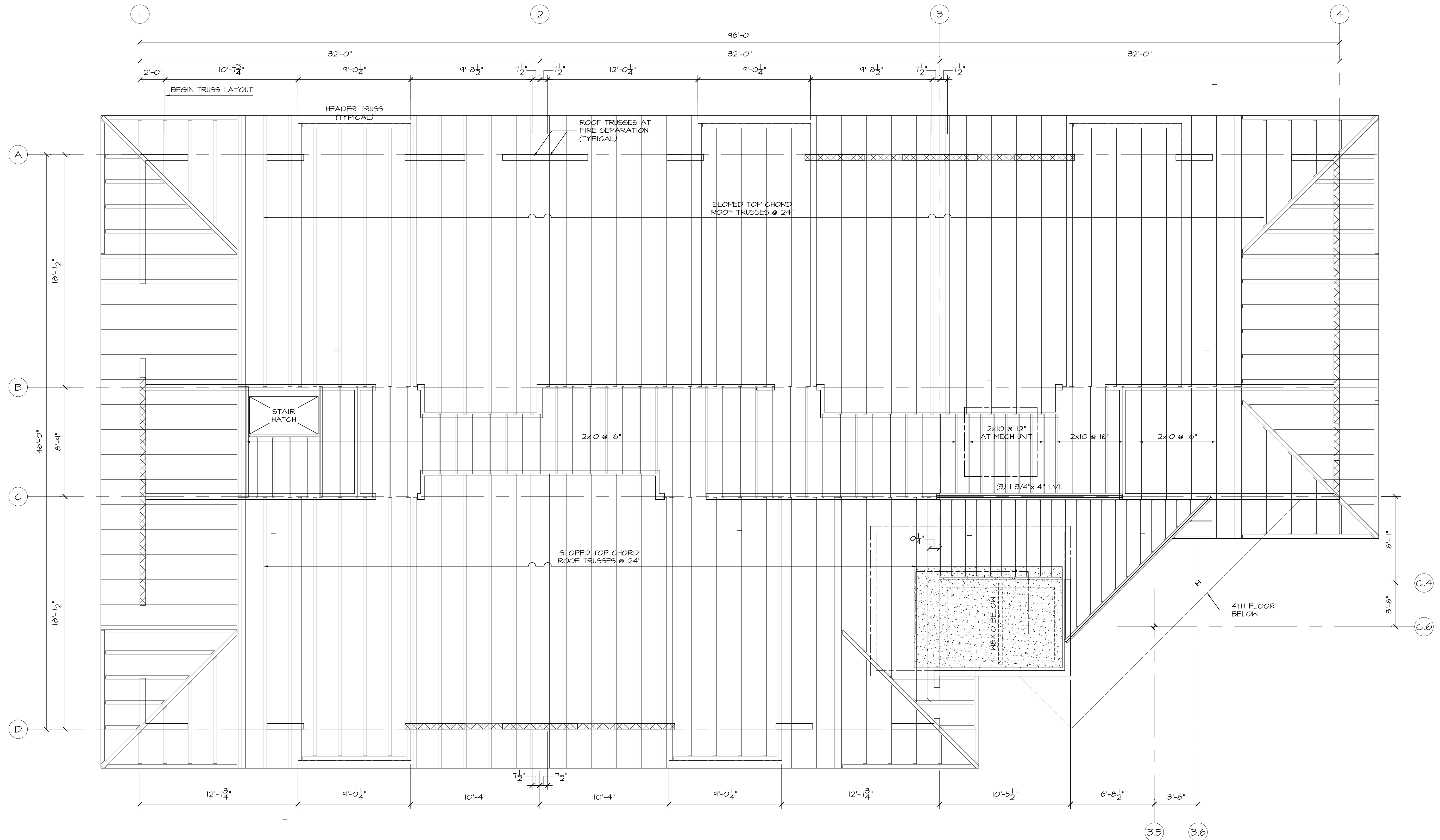


REVISIONS:

DATE: May 18, 2007
 PROJECT No. 07012
 DRAWN BY: DJT
 CHECKED BY: DJT
 SCALE: 1/4"=1'-0"

SHEET TITLE:
ROOF FRAMING PLAN

S6.0



ROOF FRAMING PLAN
 1/4"=1'-0"

ALL BEARING WALLS ARE 2x6@16" WITH DOUBLE TOP AND BOTTOM PLATES. TOP OF WALL PLATE ELEVATION = 14'-7 1/4".

XXXXXX INDICATES SHEAR WALL. EXTERIOR SHEATHING AT SHEAR WALLS IS 5/8" STRUCTURAL I PLYWOOD. SEE ARCHITECTURAL DRAWINGS FOR EXTERIOR SHEATHING AT OTHER LOCATIONS.

