

BAYSIDE EAST
PROPOSED ELDERLY HOUSING
47 SMITH STREET, PORTLAND
FOR BAYSIDE EAST LP

TFH ARCHITECTS
100 COMMERCIAL STREET
PORTLAND MAINE 04101
TELEPHONE 207 775 6141
ARCHITECTURE PLANNING

CONSULTANTS:
DBL: Pishman and Greer Consulting Engineers
350 US. Route 1
Falmouth, ME 04105
207-781-5242
STRUCTURAL: Structural Design Consulting
22 Oakmont Drive
236 Orchard Beach, ME 04094
207-934-8038
MECHANICAL AND ELECTRICAL: Bennett Engineering
7 Bennett Road
Fresno, ME 04032
207-855-9475

REVISIONS:

DATE: 05/18/07

PROJECT No. 0514

DRAWN BY: RJS

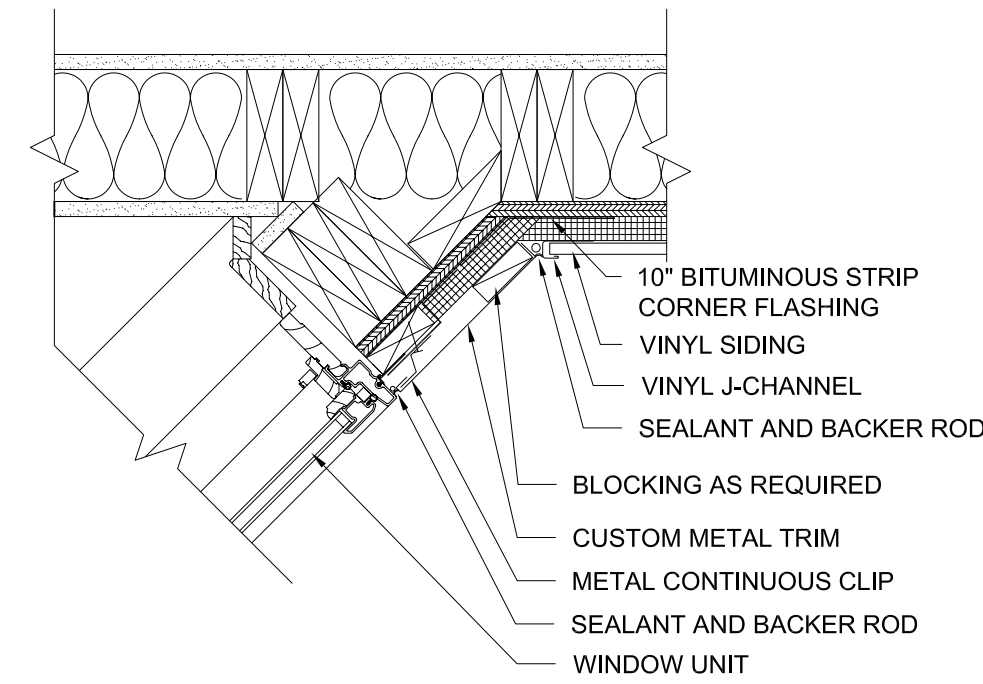
CHECKED BY: TST

SCALE: AS NOTED

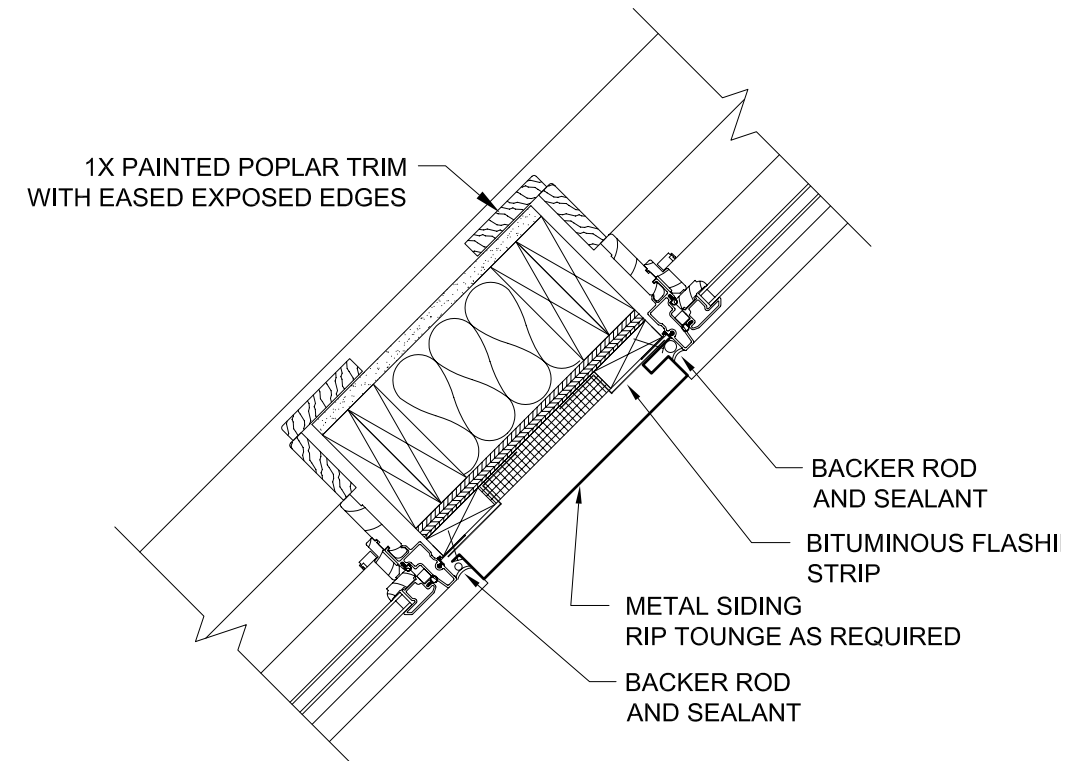
SHEET TITLE:

DETAILS

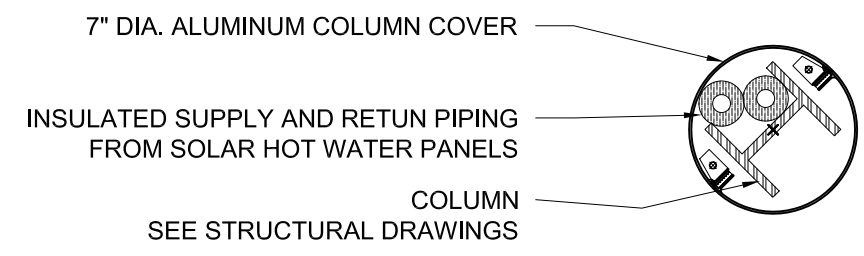
A5.5



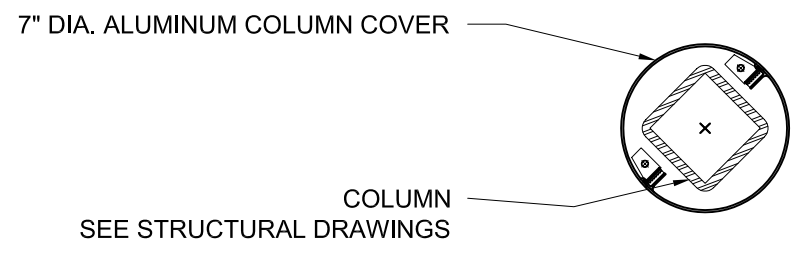
11 PLAN DETAIL AT SUN DECK WALL INTERSECTION
A5.5 1 - 1/2" = 1'-0"



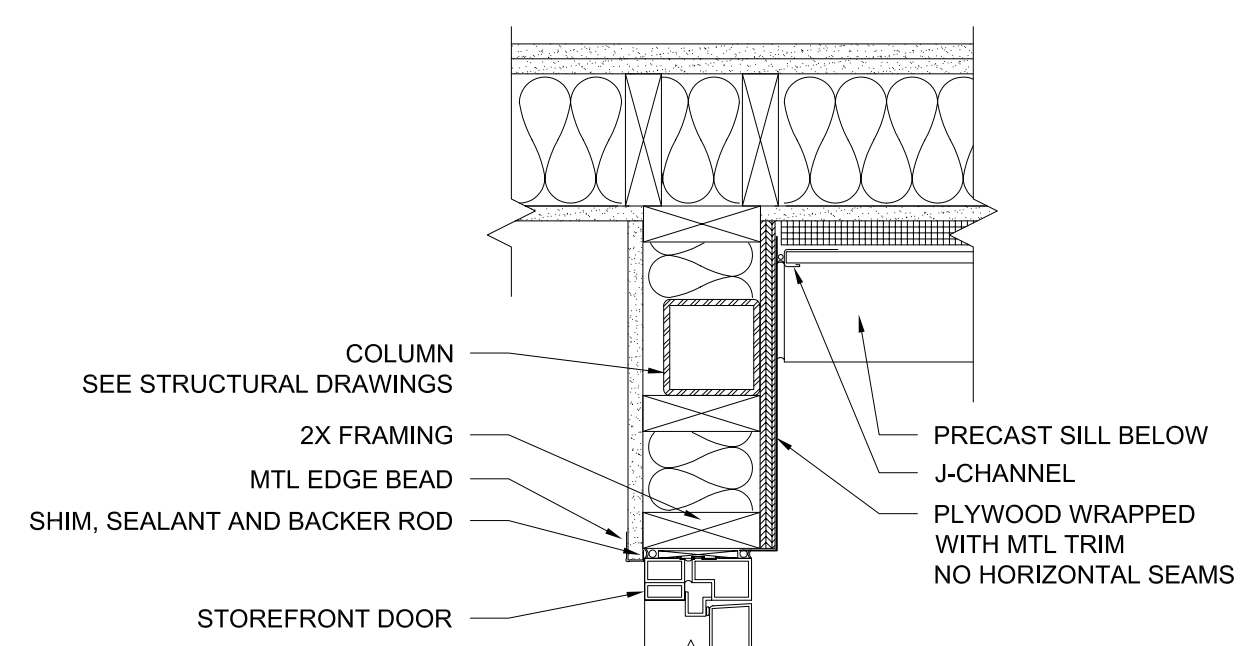
10 PLAN DETAIL AT SUN DECK WINDOWS
A5.5 1 - 1/2" = 1'-0"



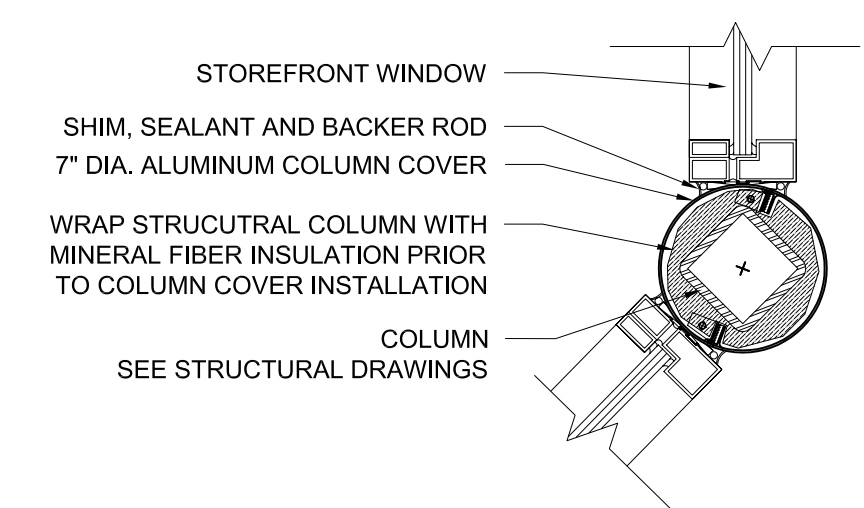
9A PLAN DETAIL AT SUNDECK COLUMN
A5.5 1 - 1/2" = 1'-0"



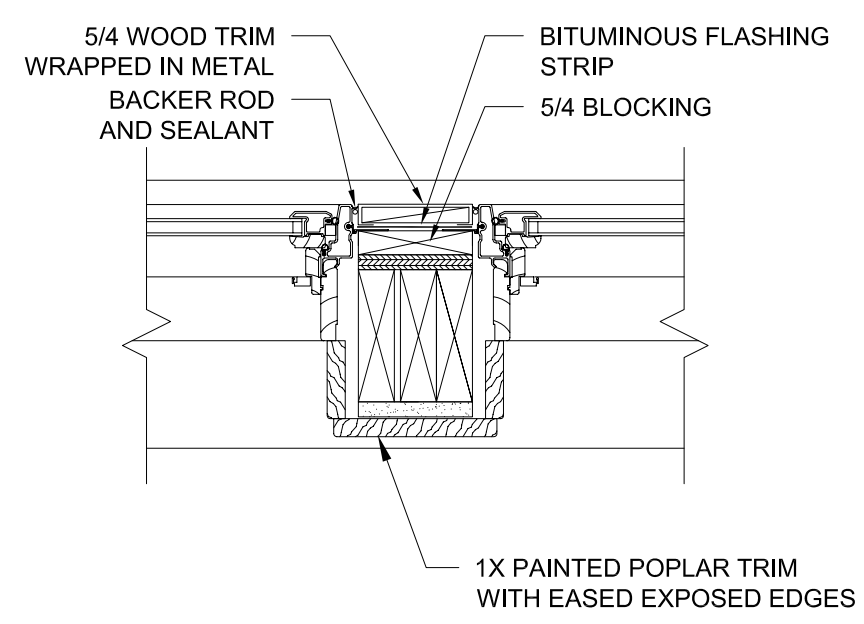
9 PLAN DETAIL AT GALLERY COLUMN
A5.5 1 - 1/2" = 1'-0"



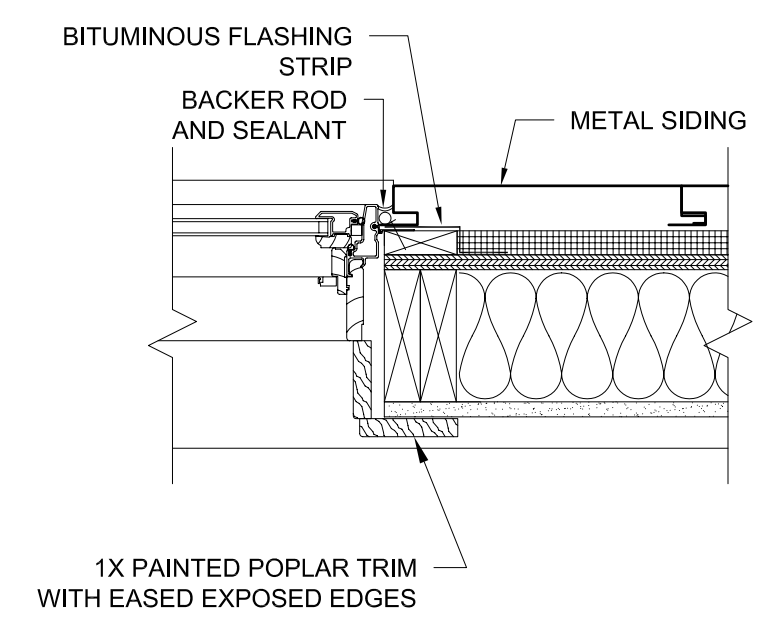
8 PLAN DETAIL AT ENTRY DOOR
A5.5 1 - 1/2" = 1'-0"



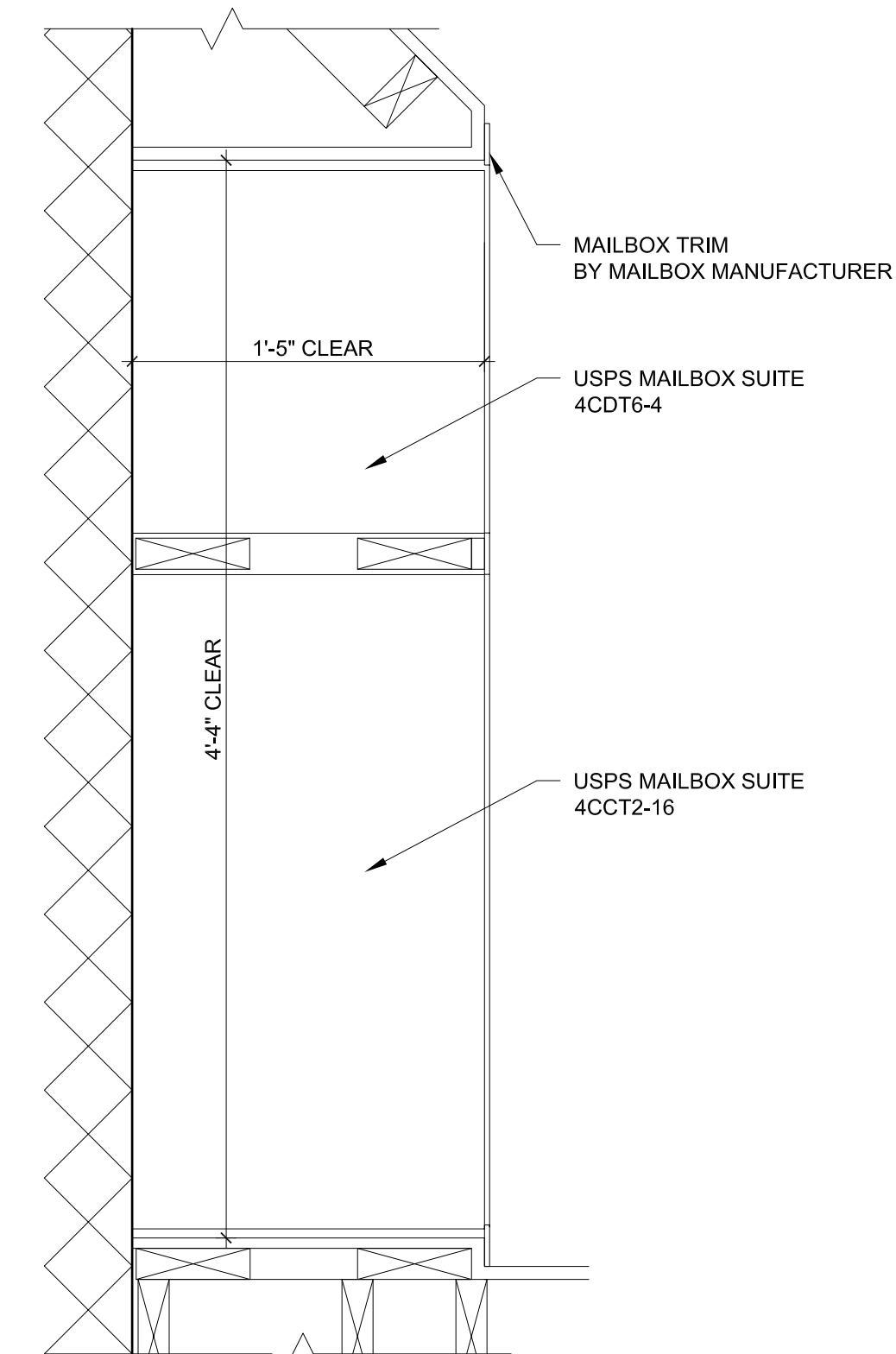
7 PLAN DETAIL AT ENTRY COLUMN
A5.5 1 - 1/2" = 1'-0"



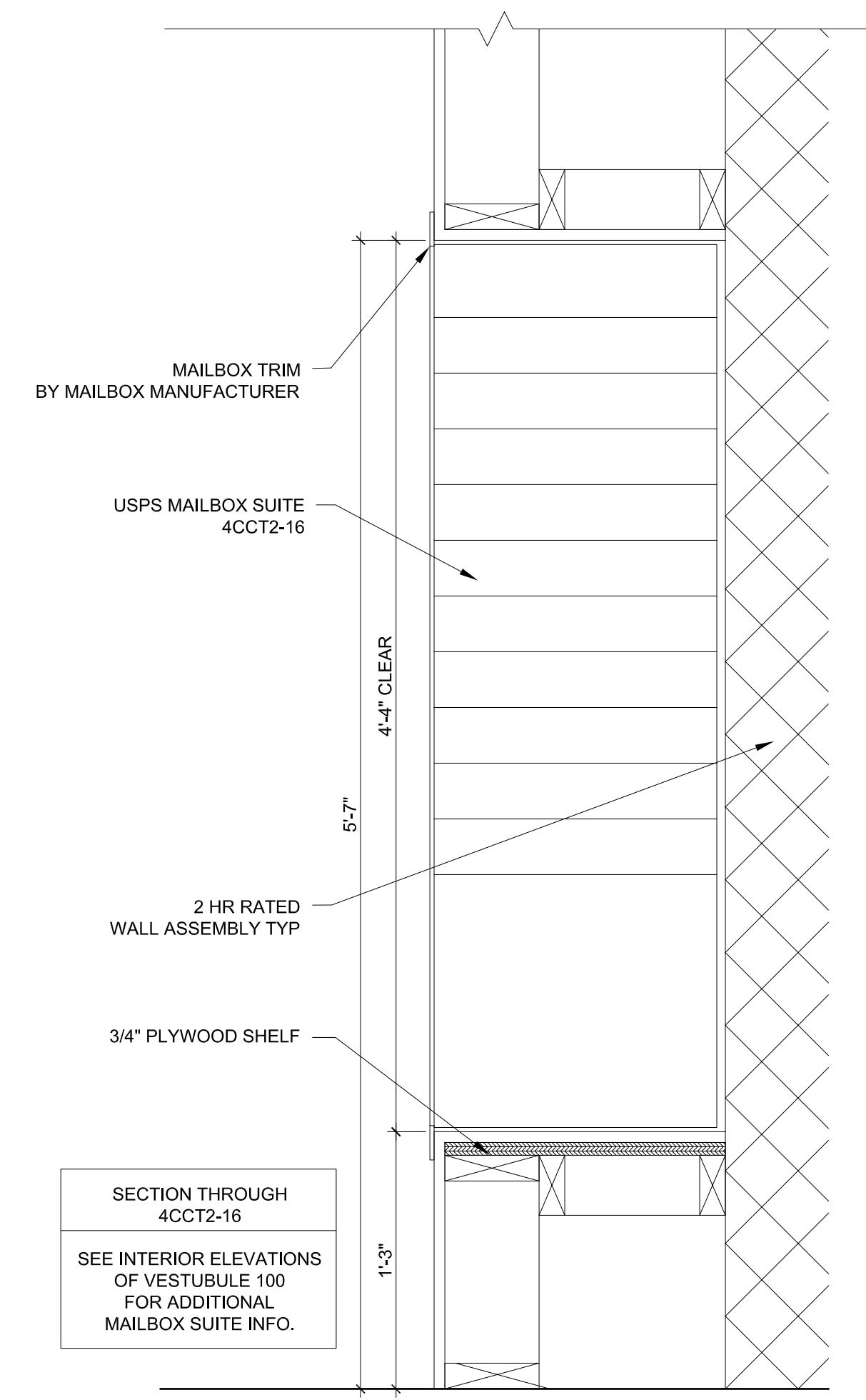
6 PLAN DETAIL AT BAY WINDOW JAMB
A5.5 1 - 1/2" = 1'-0"



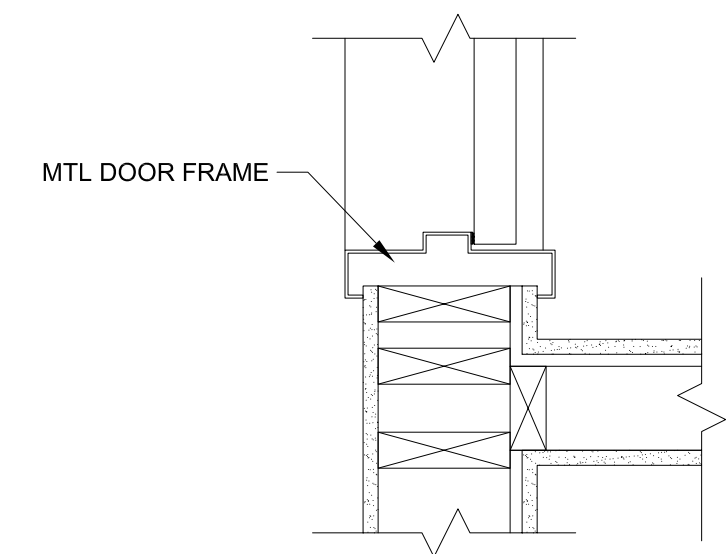
4 PLAN DETAIL AT BAY WINDOW JAMB
A5.5 1 - 1/2" = 1'-0"



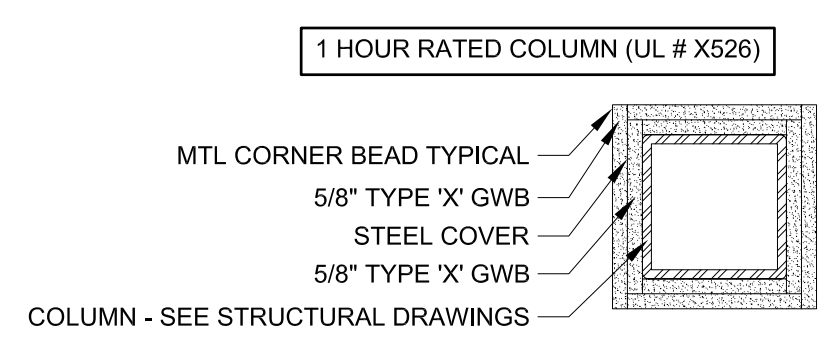
5 PLAN DETAIL AT MAILBOXES
A5.5 1 - 1/2" = 1'-0"



3 SECTION DETAIL AT MAILBOXES
A5.5 1 - 1/2" = 1'-0"



2 JAMB DETAIL AT DOOR
A5.5 1 - 1/2" = 1'-0"



1 PLAN DETAIL AT RATED COLUMN
A5.5 1 - 1/2" = 1'-0"