

© 2007 TFH ARCHITECTS

BAYSIDE EAST

PROPOSED ELDERLY HOUSING
47 SMITH STREET, PORTLAND
FOR BAYSIDE EAST LP



TFH ARCHITECTS
100 COMMERCIAL STREET
PORTLAND MAINE 04101
TELEPHONE 207 775 6141
ARCHITECTURE PLANNING

CONSULTANTS:
DWG: Prichard and Greer Consulting Engineers
350 US. Route 1
Falmouth, ME 04105
207-781-5242
STRUCTURAL: Structural Design Consulting
22 Oakmont Drive
206 Orchard Beach, ME 04054
207-934-8038
MECHANICAL AND ELECTRICAL: Bennett Engineering
7 Bennett Road
Fresno, ME 04032
207-855-9475

REVISIONS:

DATE: 05/18/07

PROJECT No. 0514

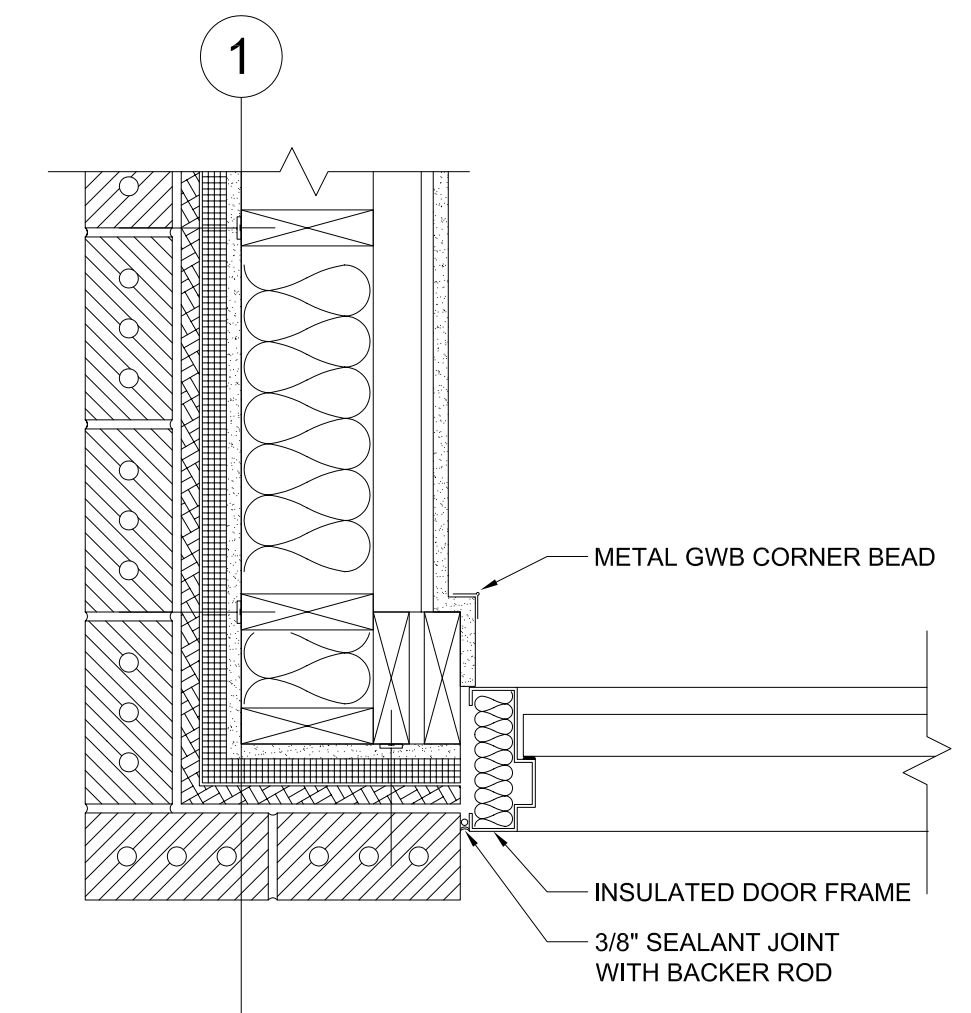
DRAWN BY: RJS

CHECKED BY: TST

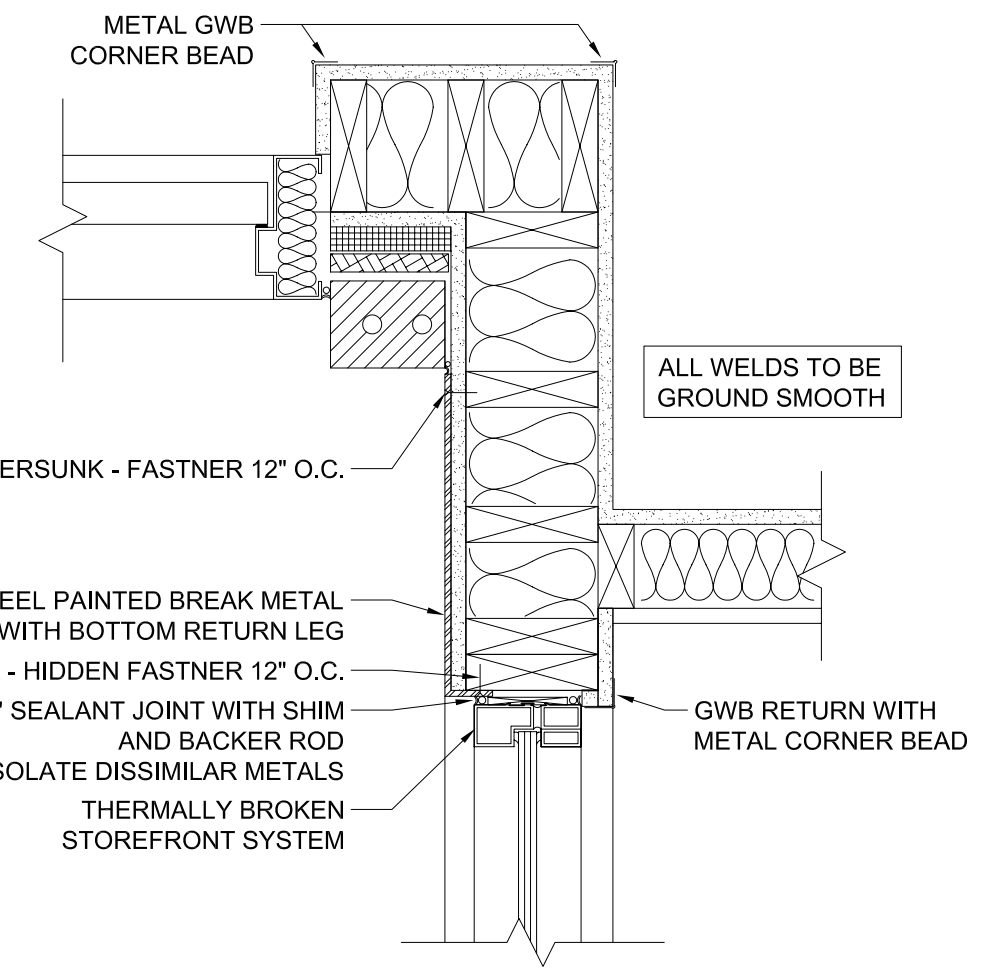
SCALE: AS NOTED

SHEET TITLE:
DETAILS

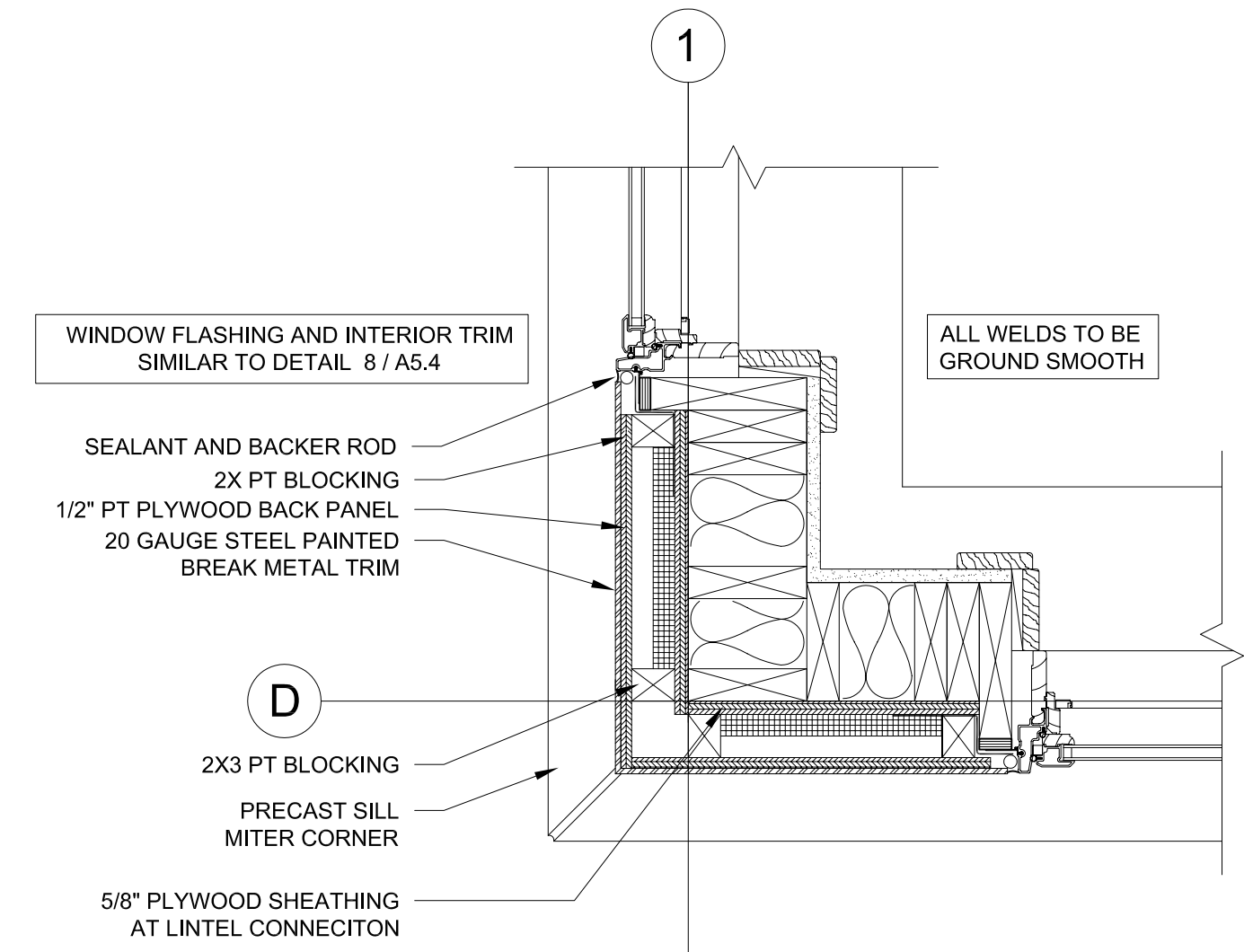
A5.4



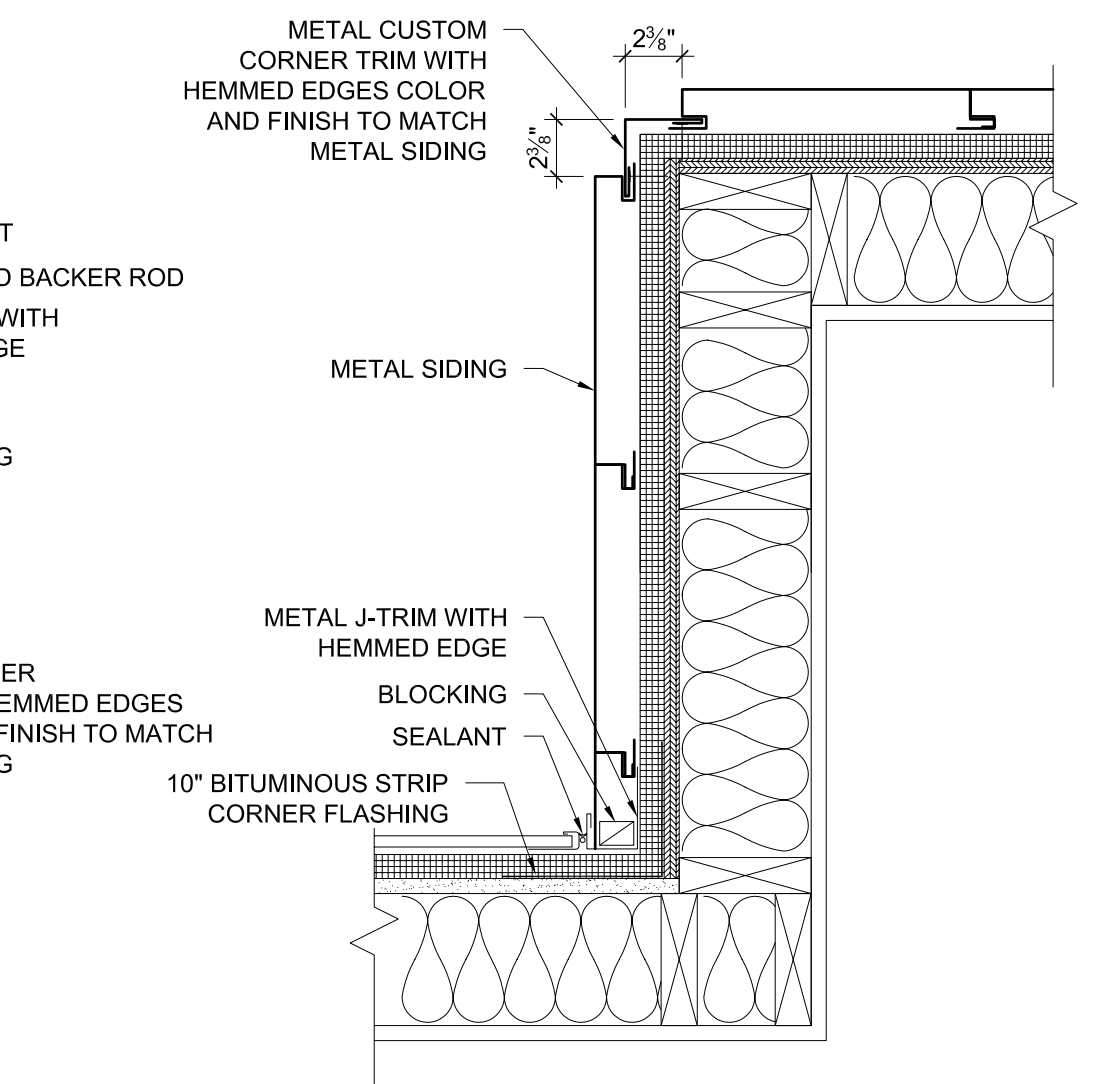
3 PLAN DETAIL AT TRASH ROOM DOOR
A5.4 1 - 1/2" = 1'-0"



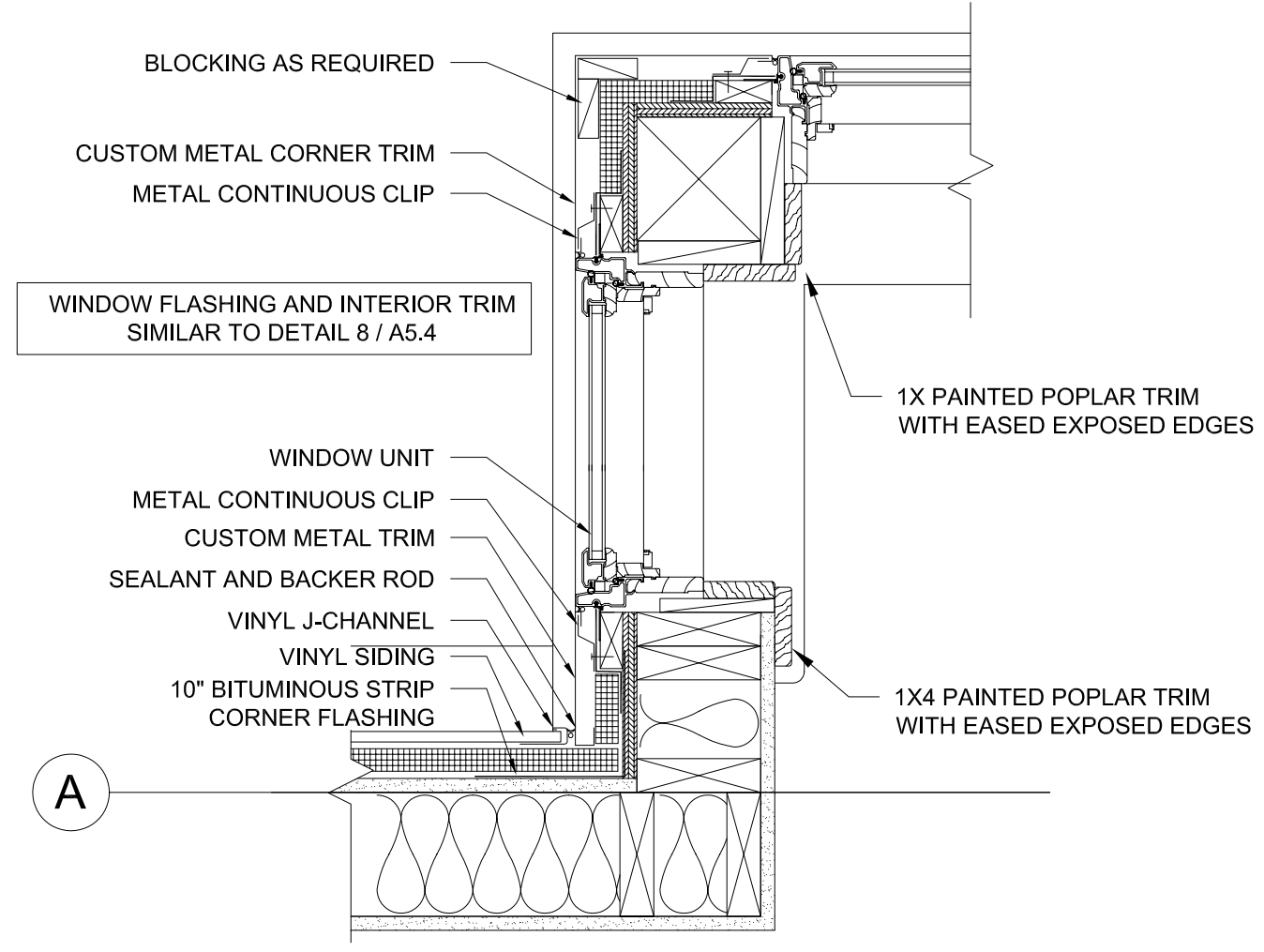
2 PLAN DETAIL AT REAR DOOR
A5.4 1 - 1/2" = 1'-0"



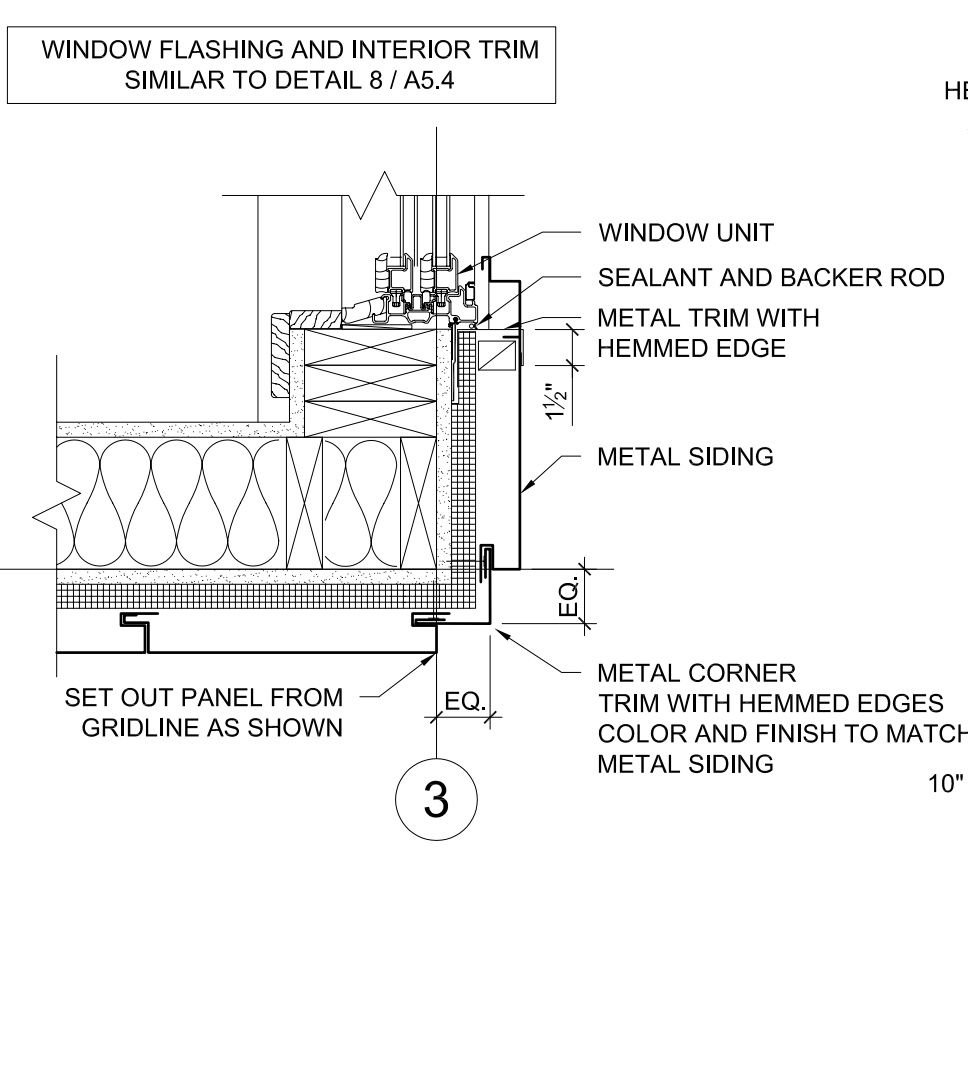
1 PLAN DETAIL AT CORNER
A5.4 1 - 1/2" = 1'-0"



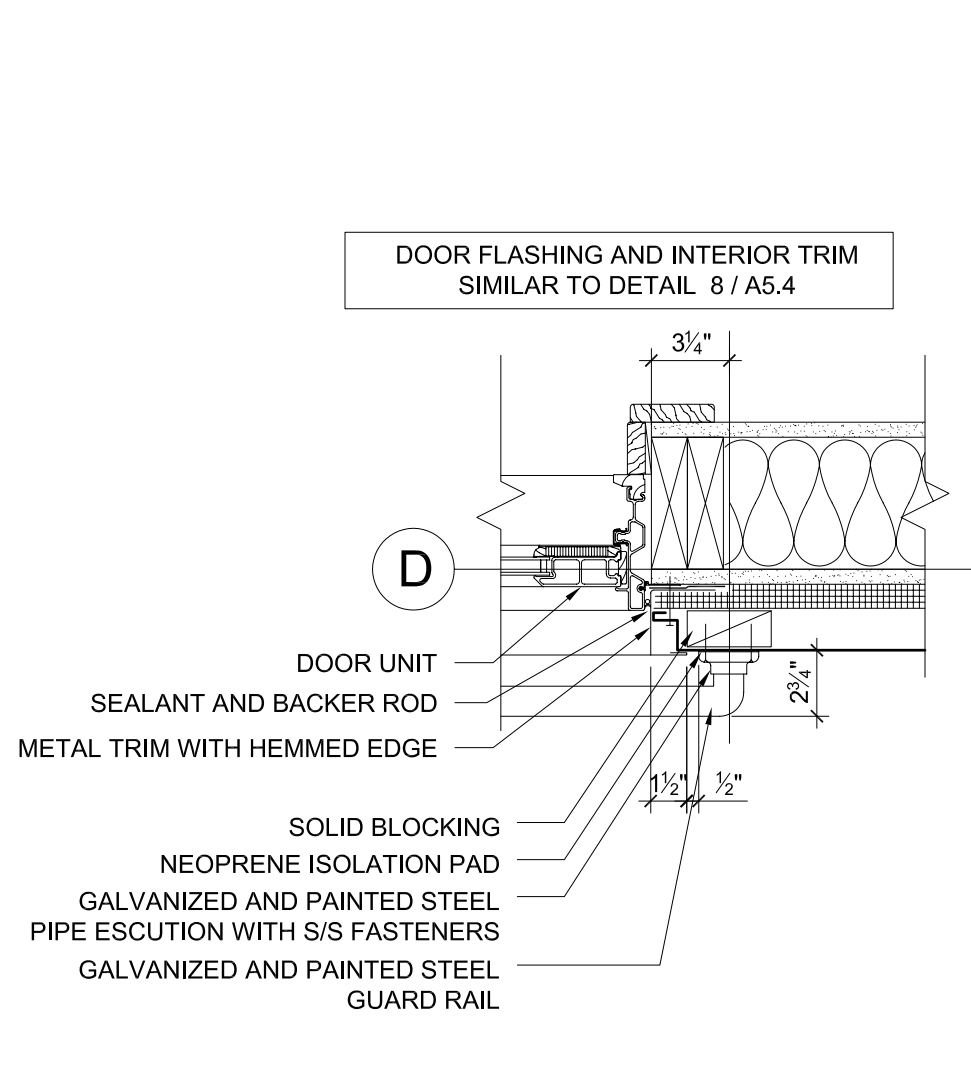
6 PLAN DETAIL AT BAY PROJECTION
A5.4 1 - 1/2" = 1'-0"



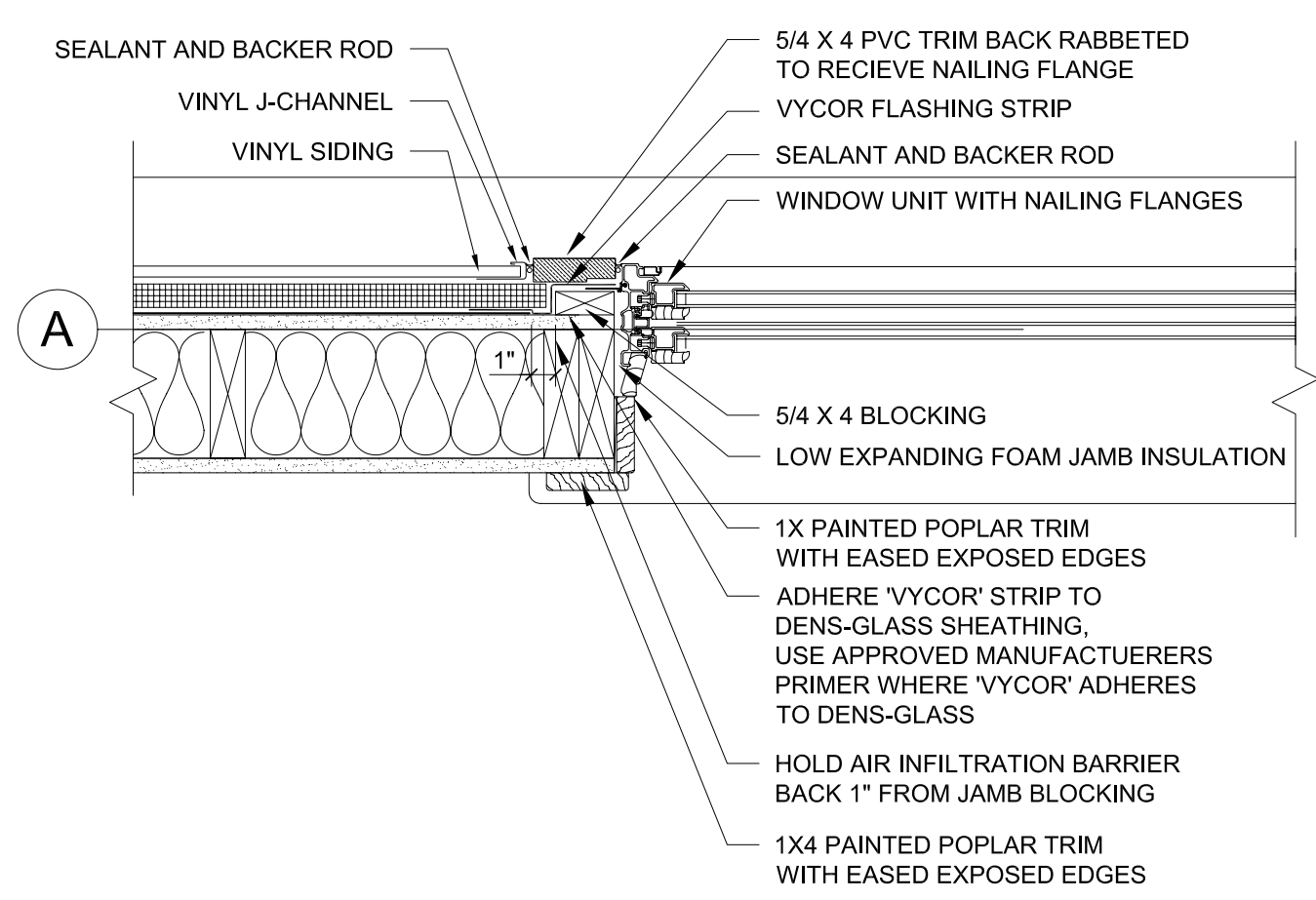
5 PLAN DETAIL AT BAY PROJECTION AT WINDOW
A5.4 1 - 1/2" = 1'-0"



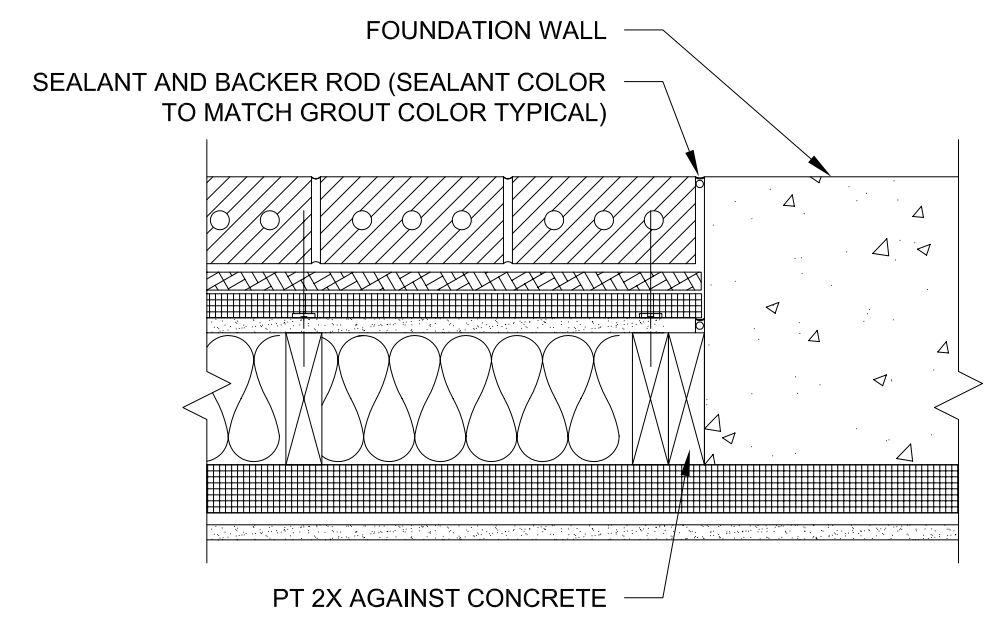
9 JAMB DETAIL AT WINDOW
A5.4 1 - 1/2" = 1'-0"



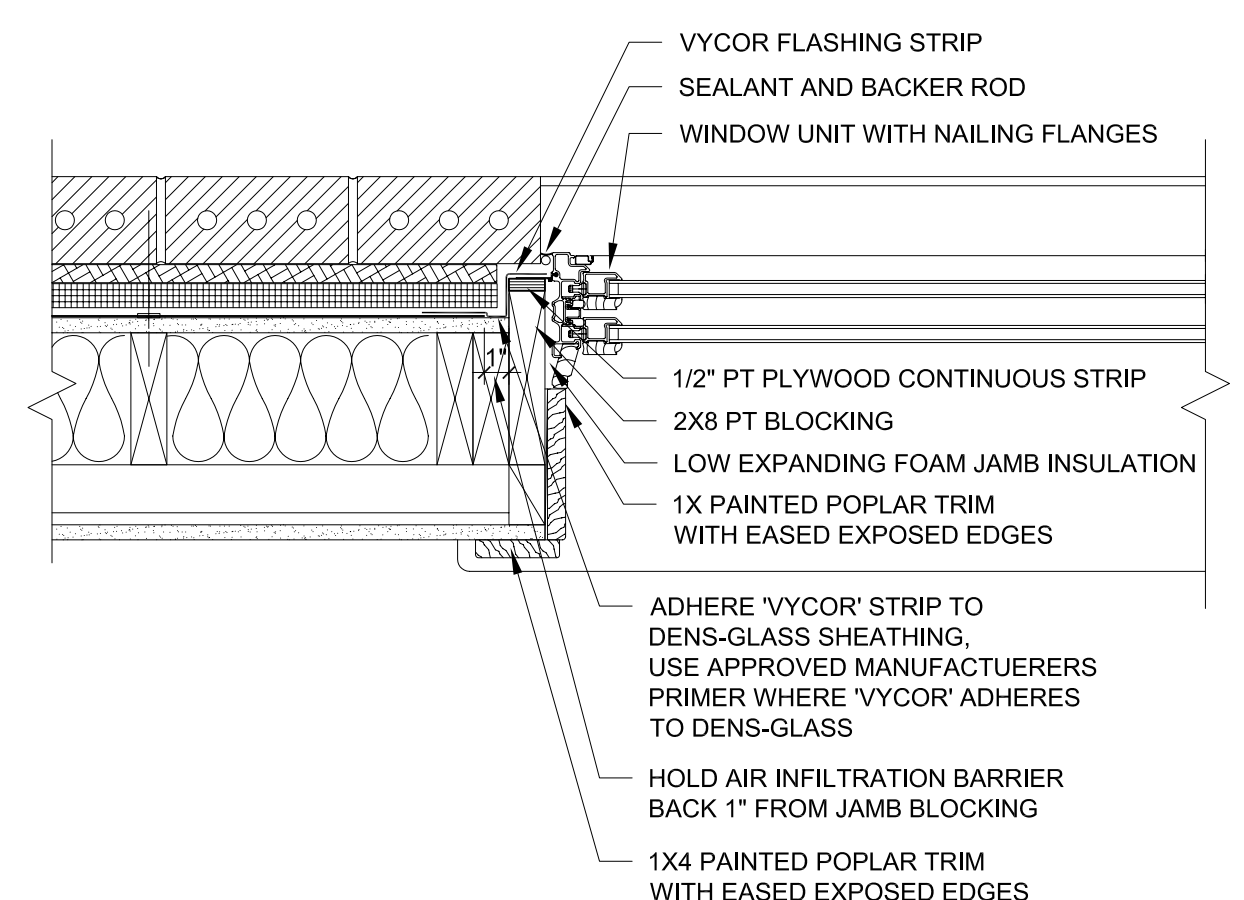
12 JAMB DETAIL AT SLIDING DOOR TYPICAL
A5.4 1 - 1/2" = 1'-0"



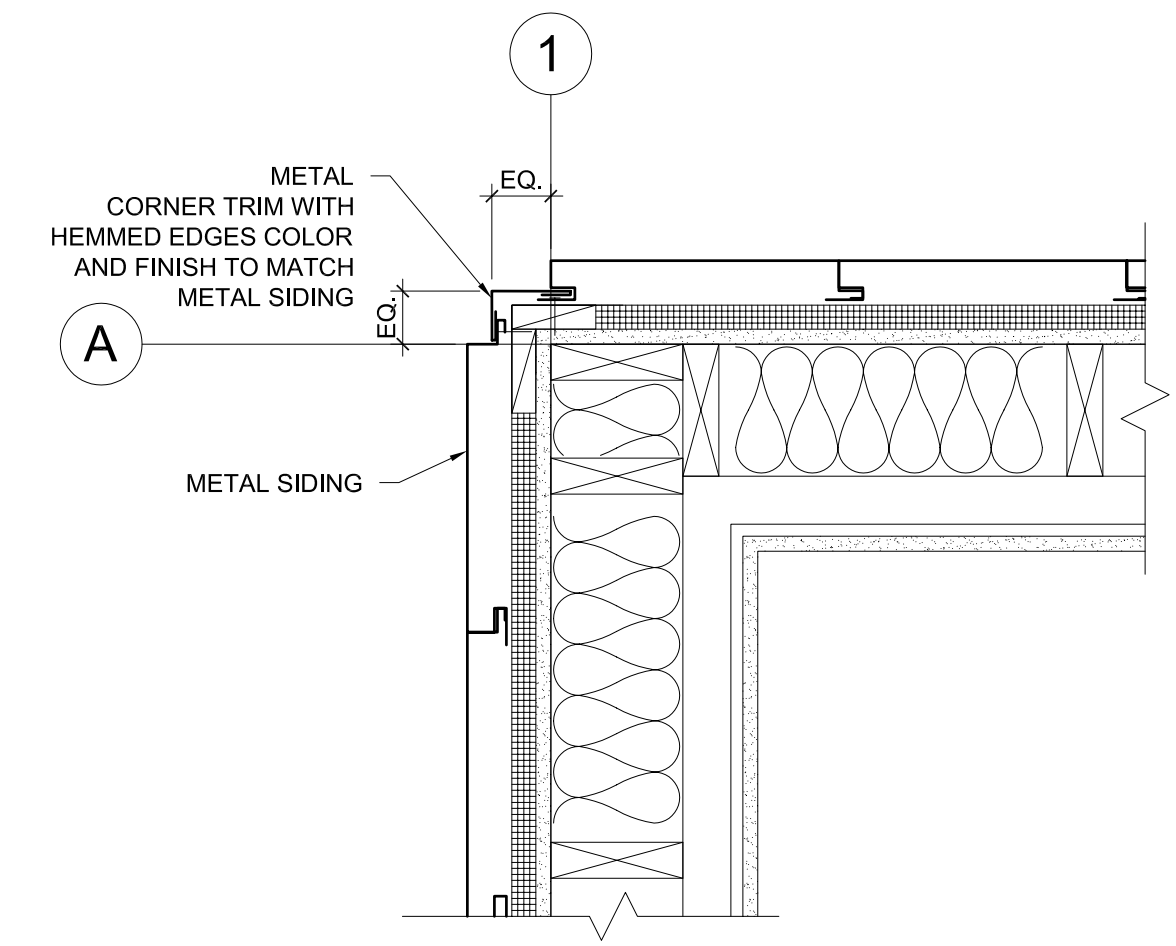
8 JAMB DETAIL AT WINDOW IN SIDING
A5.4 1 - 1/2" = 1'-0"



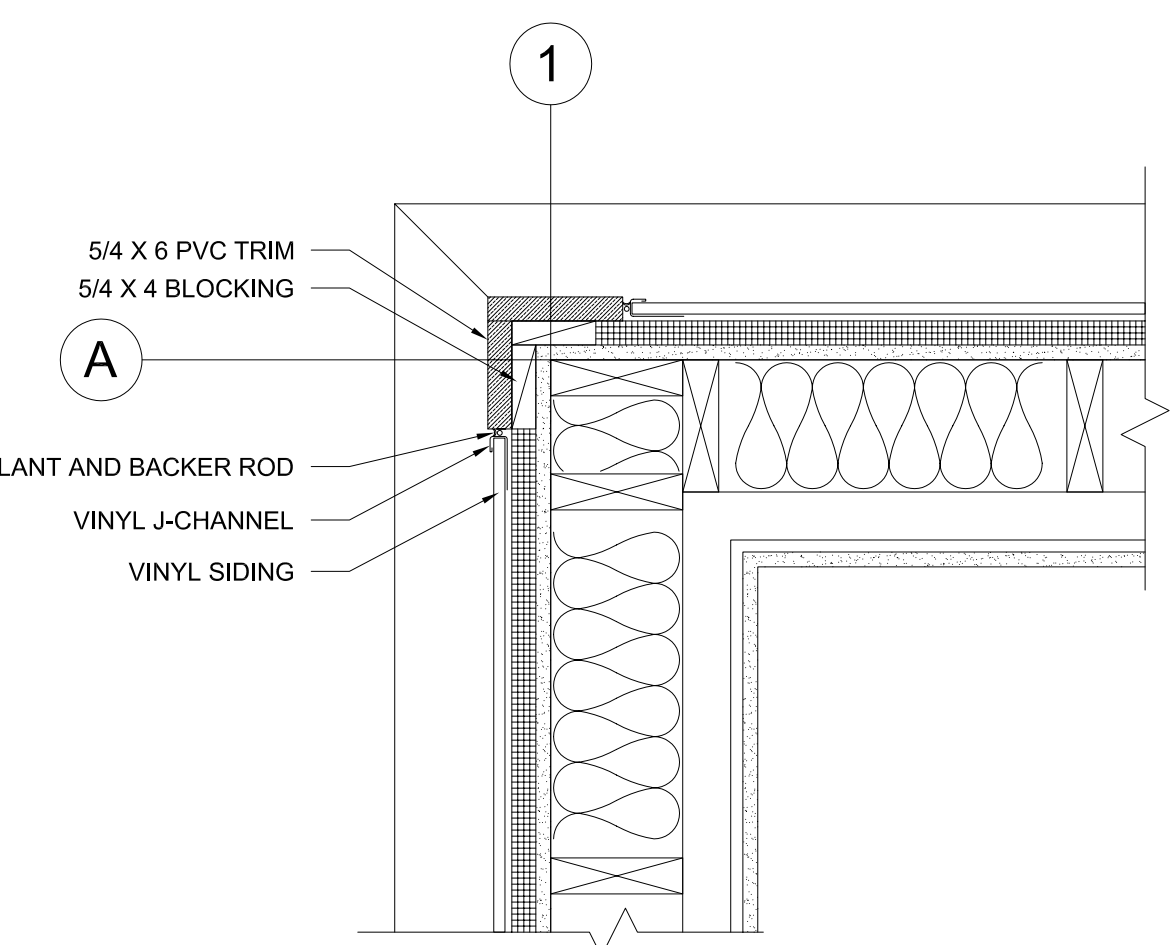
4 PLAN DETAIL AT FOUNDATION WALL TRANSITION
A5.4 1 - 1/2" = 1'-0"



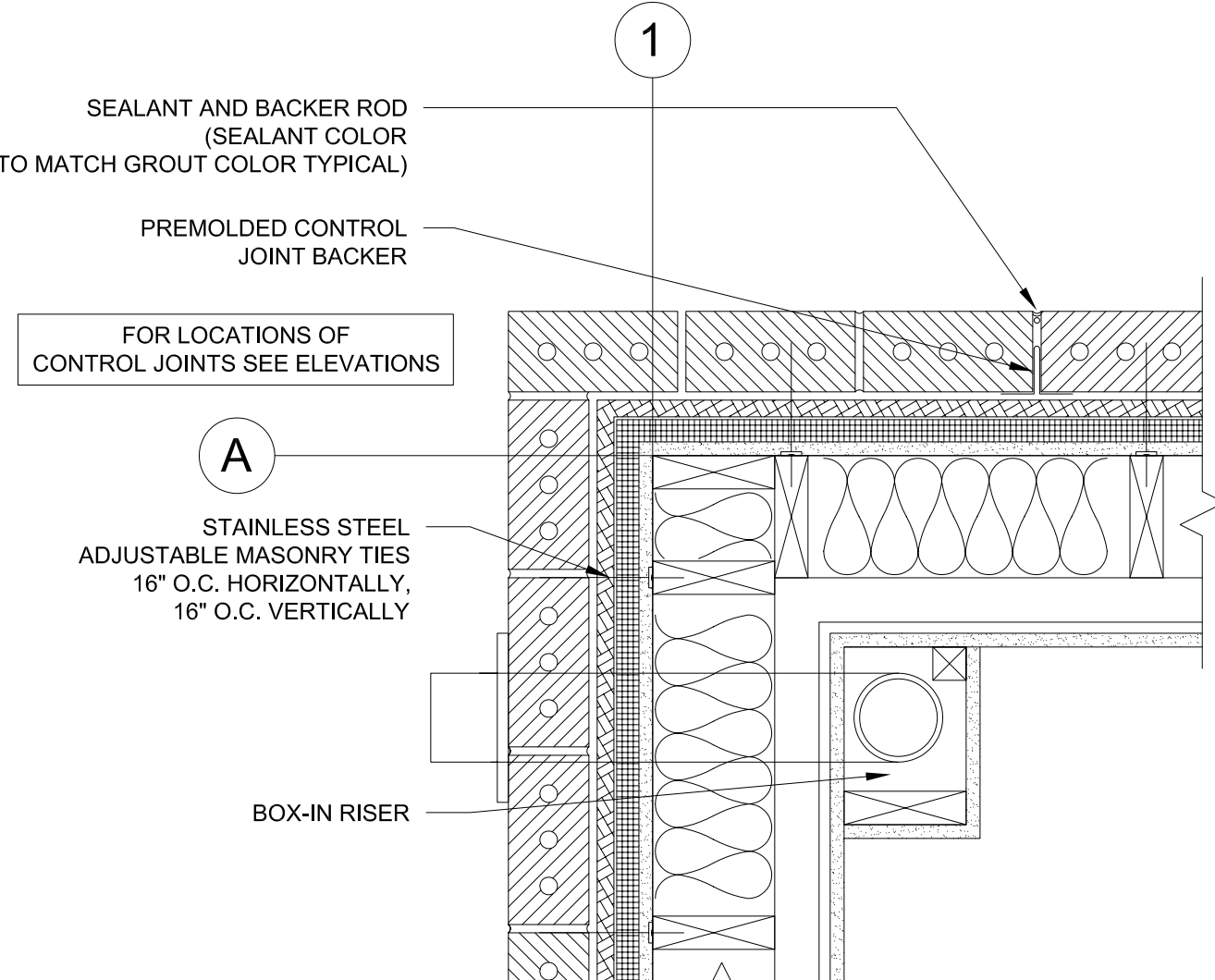
7 JAMB DETAIL AT WINDOW IN MASONRY VENEER
A5.4 1 - 1/2" = 1'-0"



13 PLAN DETAIL AT METAL SIDING CORNER
A5.4 1 - 1/2" = 1'-0"



11 PLAN DETAIL AT VINYL SIDING CORNER
A5.4 1 - 1/2" = 1'-0"



10 PLAN DETAIL AT MASONRY CORNER
A5.4 1 - 1/2" = 1'-0"