

© 2007 TFH ARCHITECTS

BAYSIDE EAST
 PROPOSED ELDERLY HOUSING
 47 SMITH STREET, PORTLAND
 FOR BAYSIDE EAST LP



TFH ARCHITECTS
 100 COMMERCIAL STREET
 PORTLAND MAINE 04101
 TELEPHONE 207 775 6141
 ARCHITECTURE PLANNING

CONSULTANTS:
CIVIL:
 Pishman and Greer Consulting Engineers
 350 US Route 1
 Falmouth, ME 04105
 207-781-5242
STRUCTURAL:
 Structural Design Consulting
 22 Oakmont Drive
 236 Orchard Beach, ME 04094
 207-934-8038
MECHANICAL AND ELECTRICAL:
 Bennett Engineering
 7 Bennett Road
 Friesop, ME 04032
 207-866-9475

REVISIONS:

DATE: 05/18/07

PROJECT No. 0514

DRAWN BY: RJS

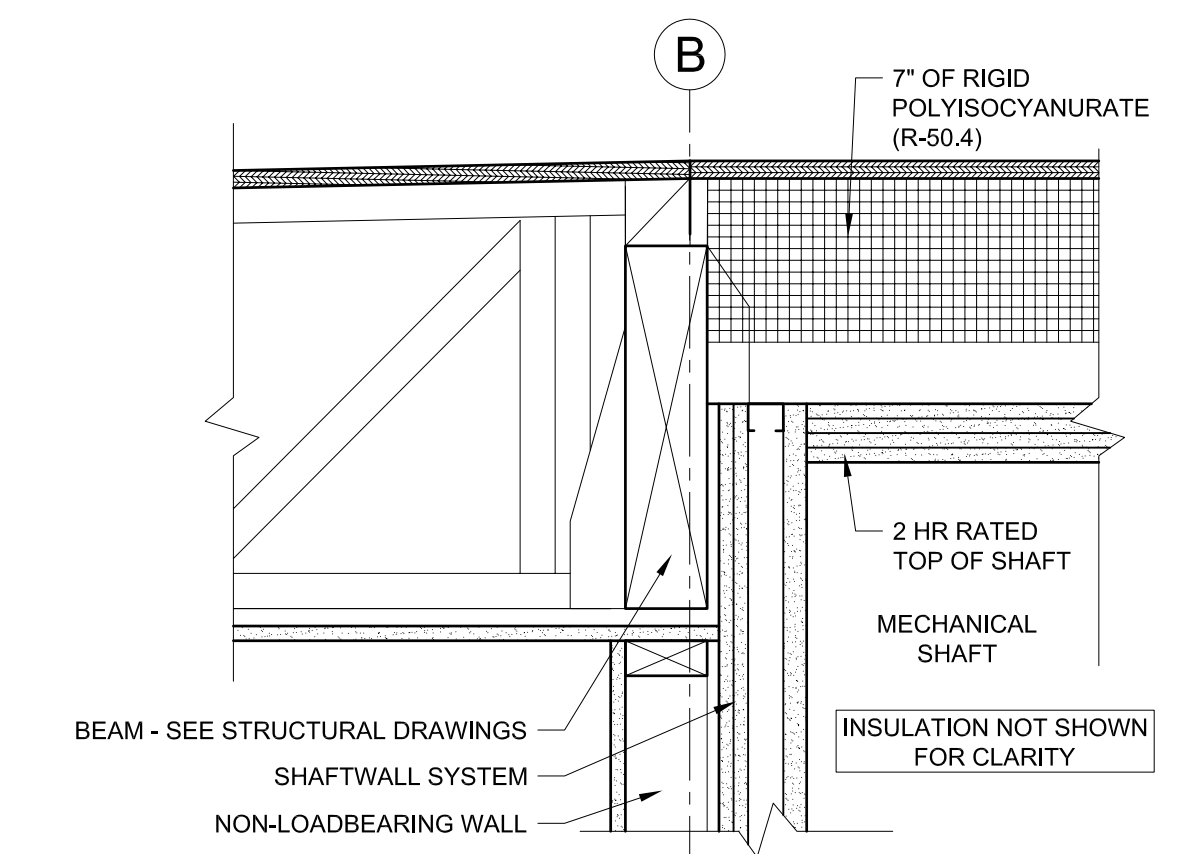
CHECKED BY: TST

SCALE: AS NOTED

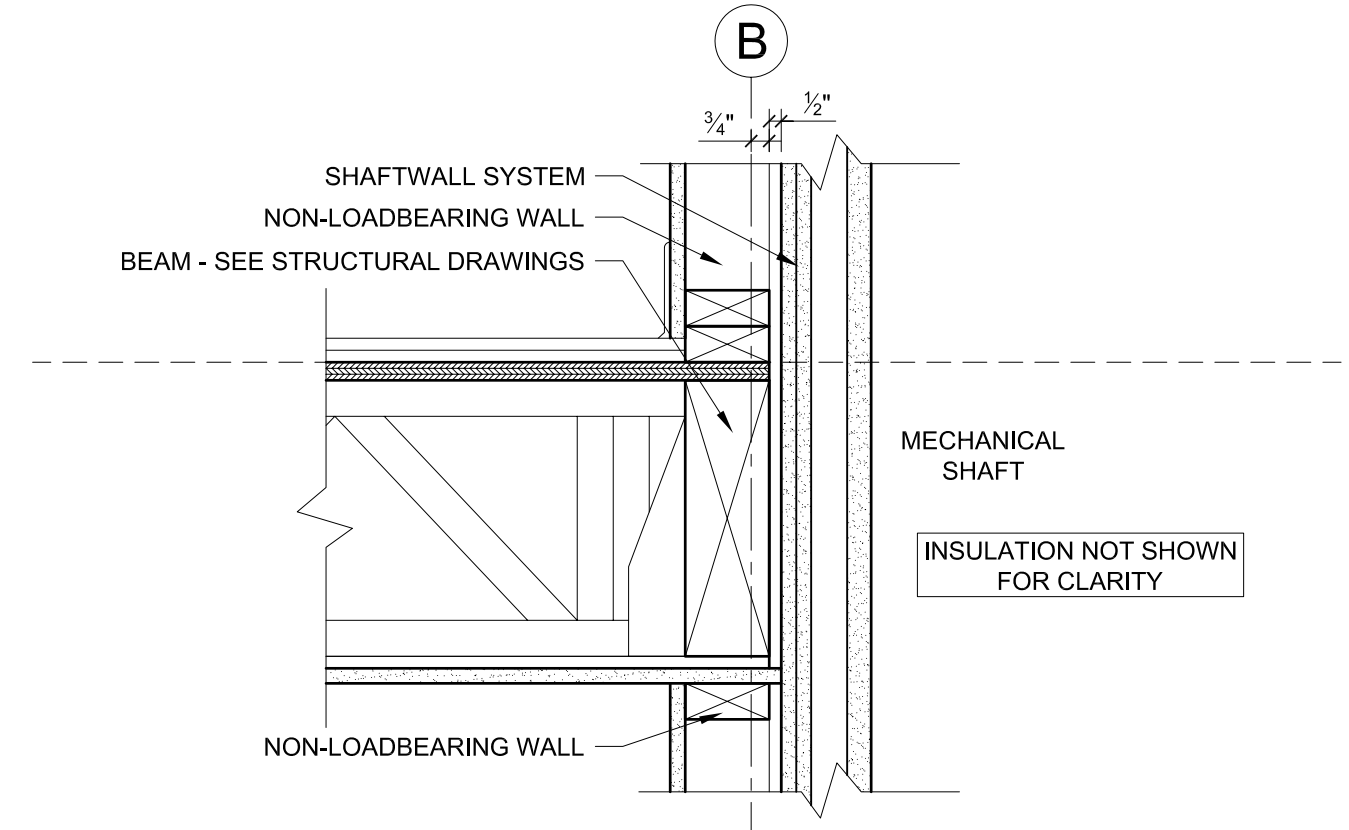
SHEET TITLE:

DETAILS

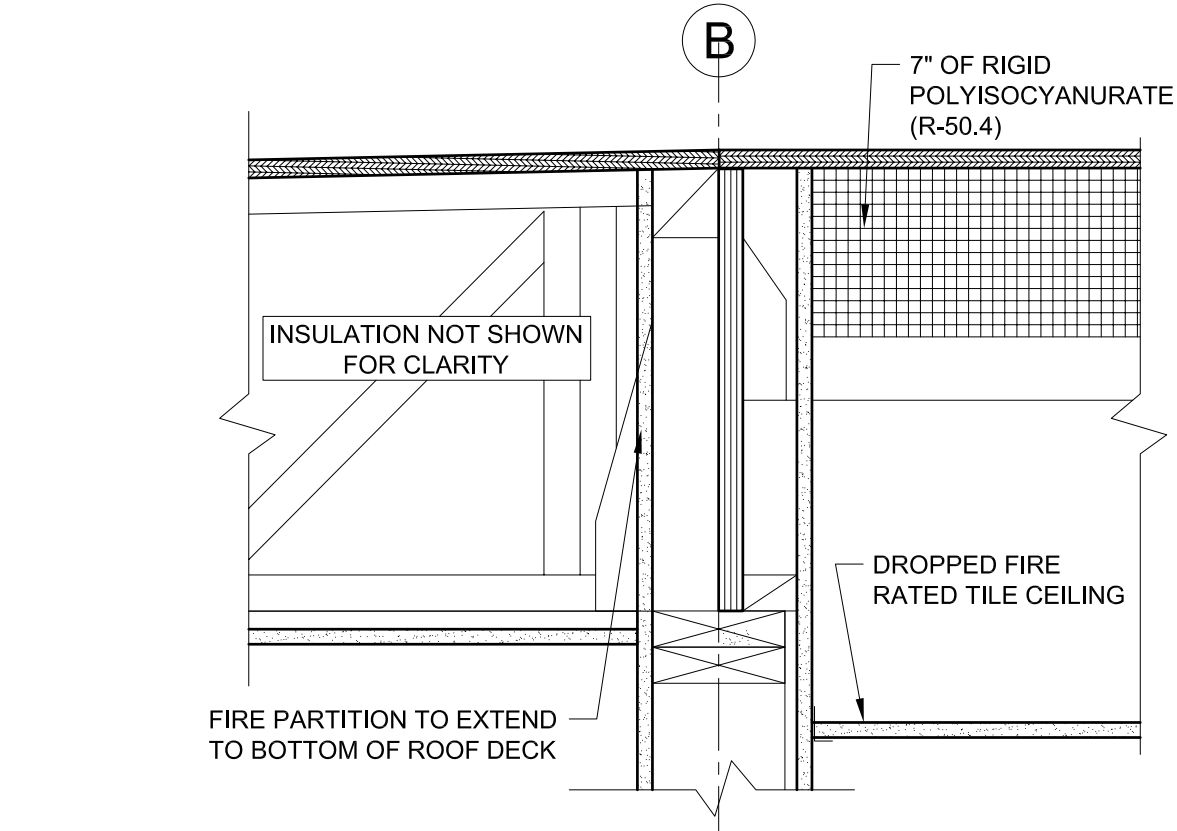
A5.3



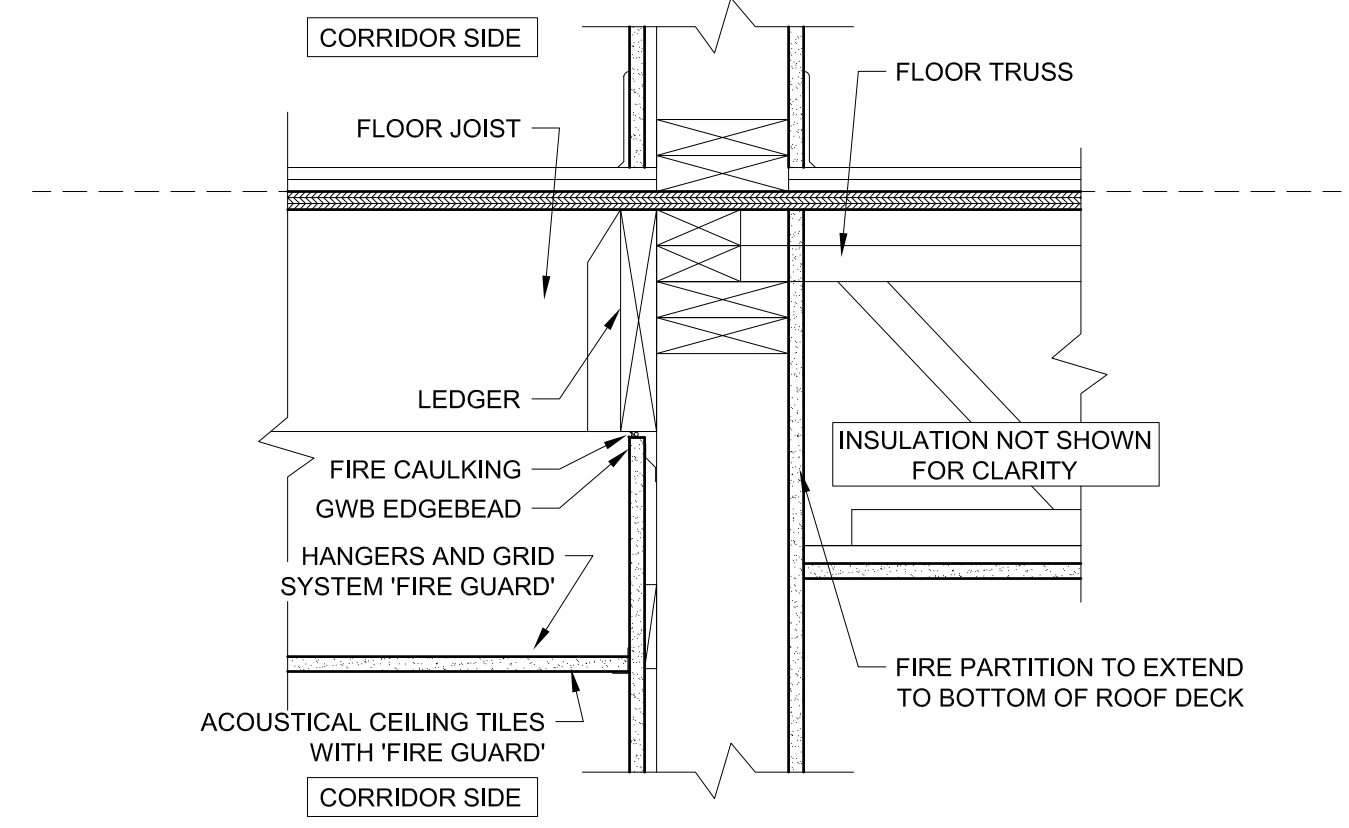
4
A5.3 SECTION DETAIL AT MECHANICAL SHAFT TOP
 1 - 1/2" = 1'-0"



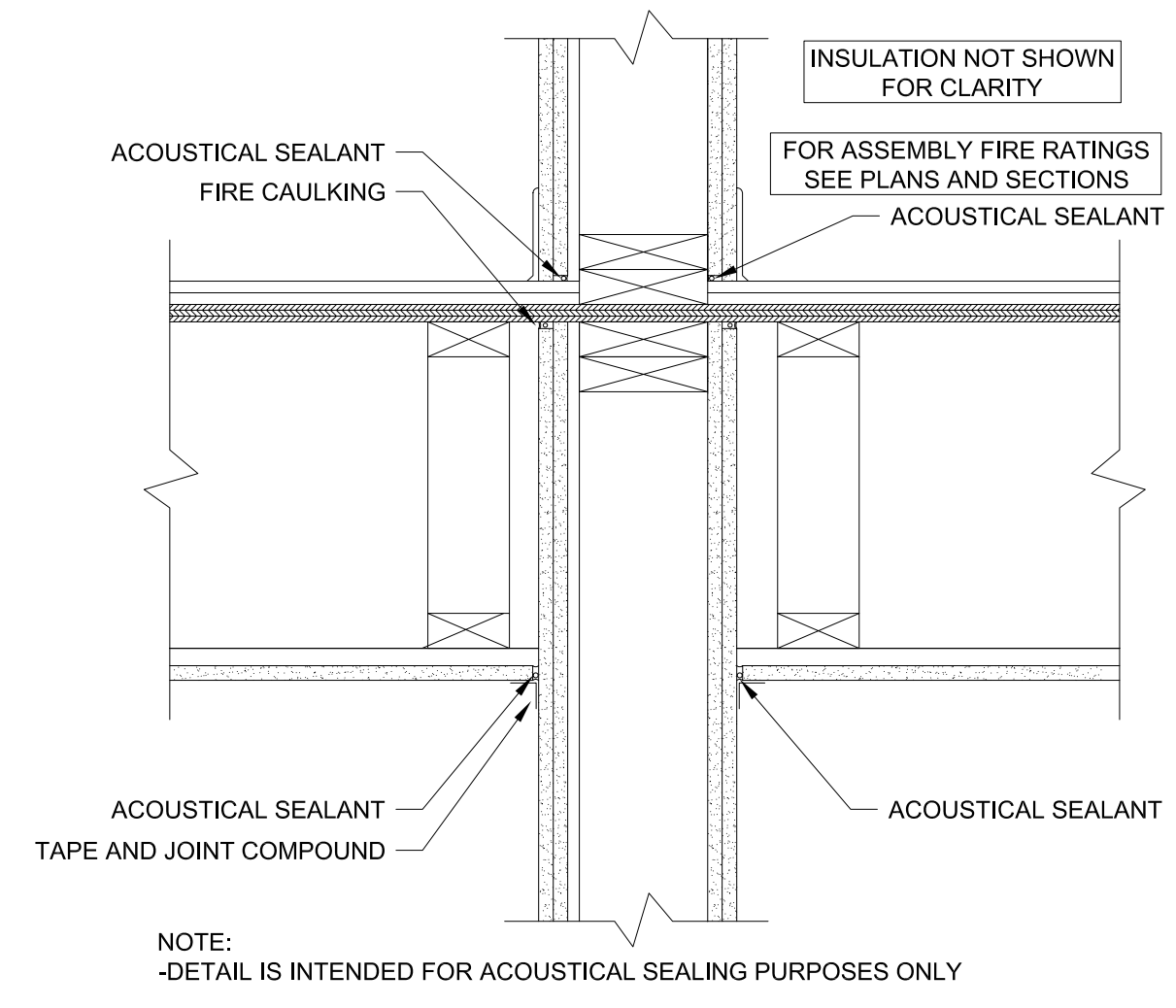
3
A5.3 SECTION DETAIL AT MECHANICAL SHAFT
 1 - 1/2" = 1'-0"



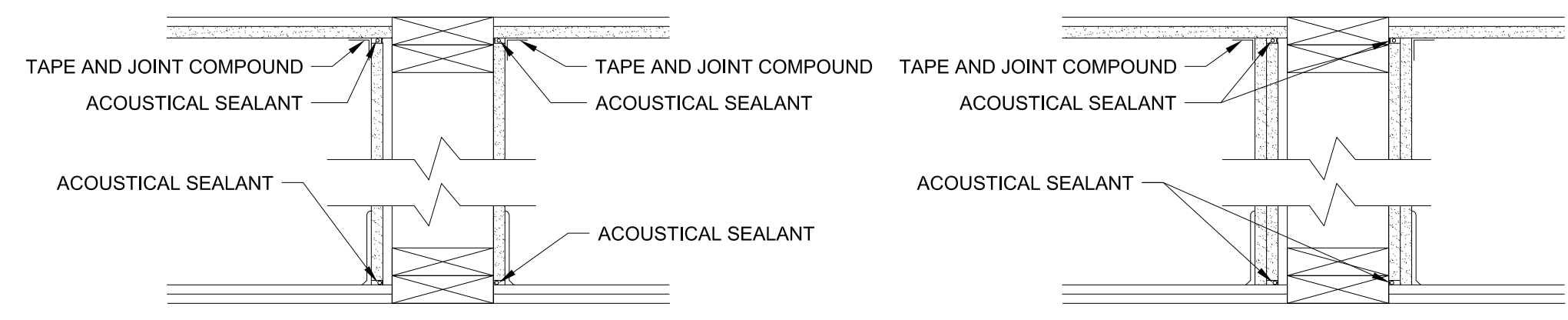
2
A5.3 SECTION DETAIL AT CORRIDOR WALL / ROOF / CEILING
 1 - 1/2" = 1'-0"



1
A5.3 SECTION DETAIL AT CORRIDOR WALL / CEILING
 1 - 1/2" = 1'-0"

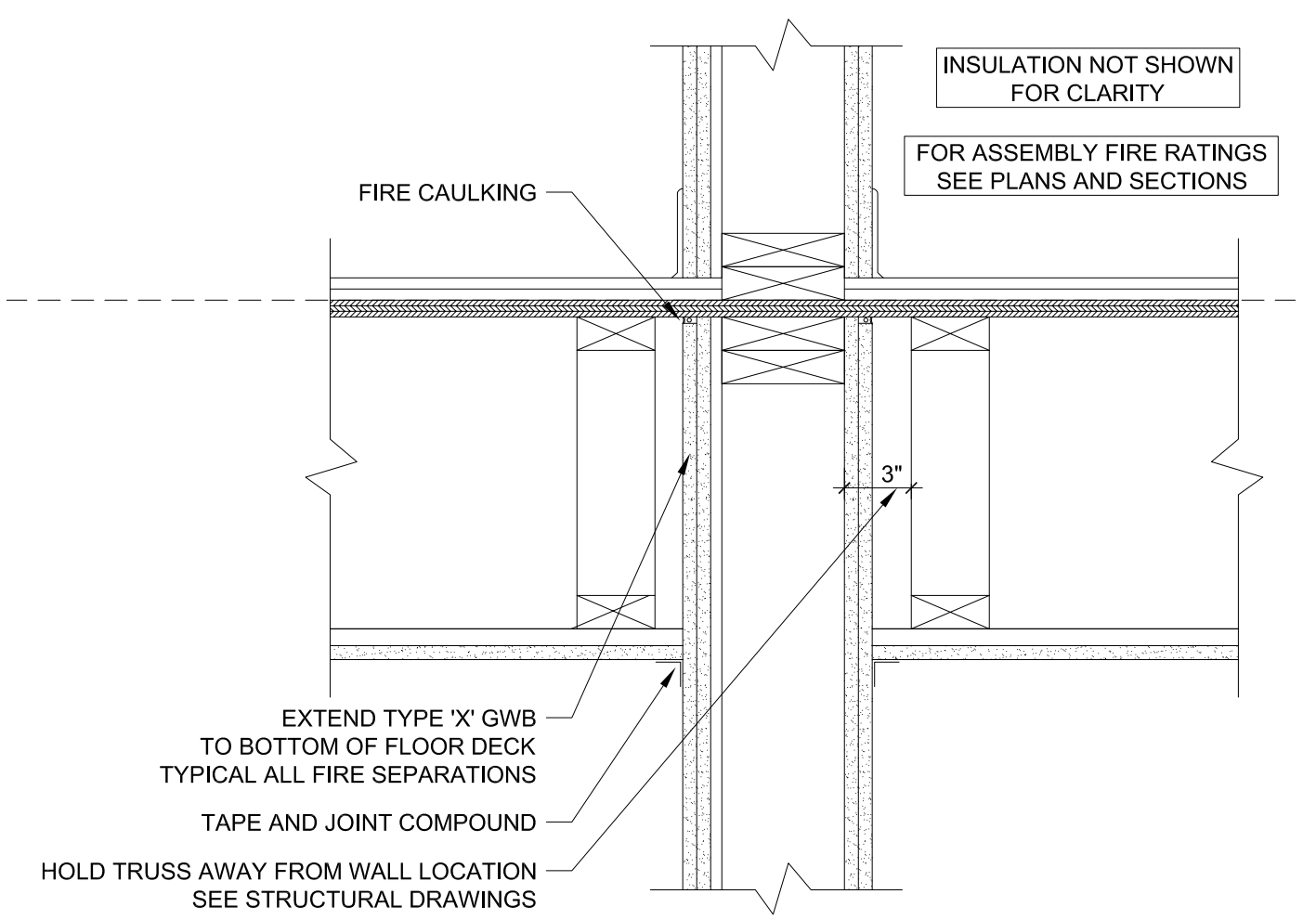


7
A5.3 ACOUSTIC ISOLATION DETAIL AT RATED FLOOR/WALL ASSEMBLY
 1-1/2" = 1'-0"

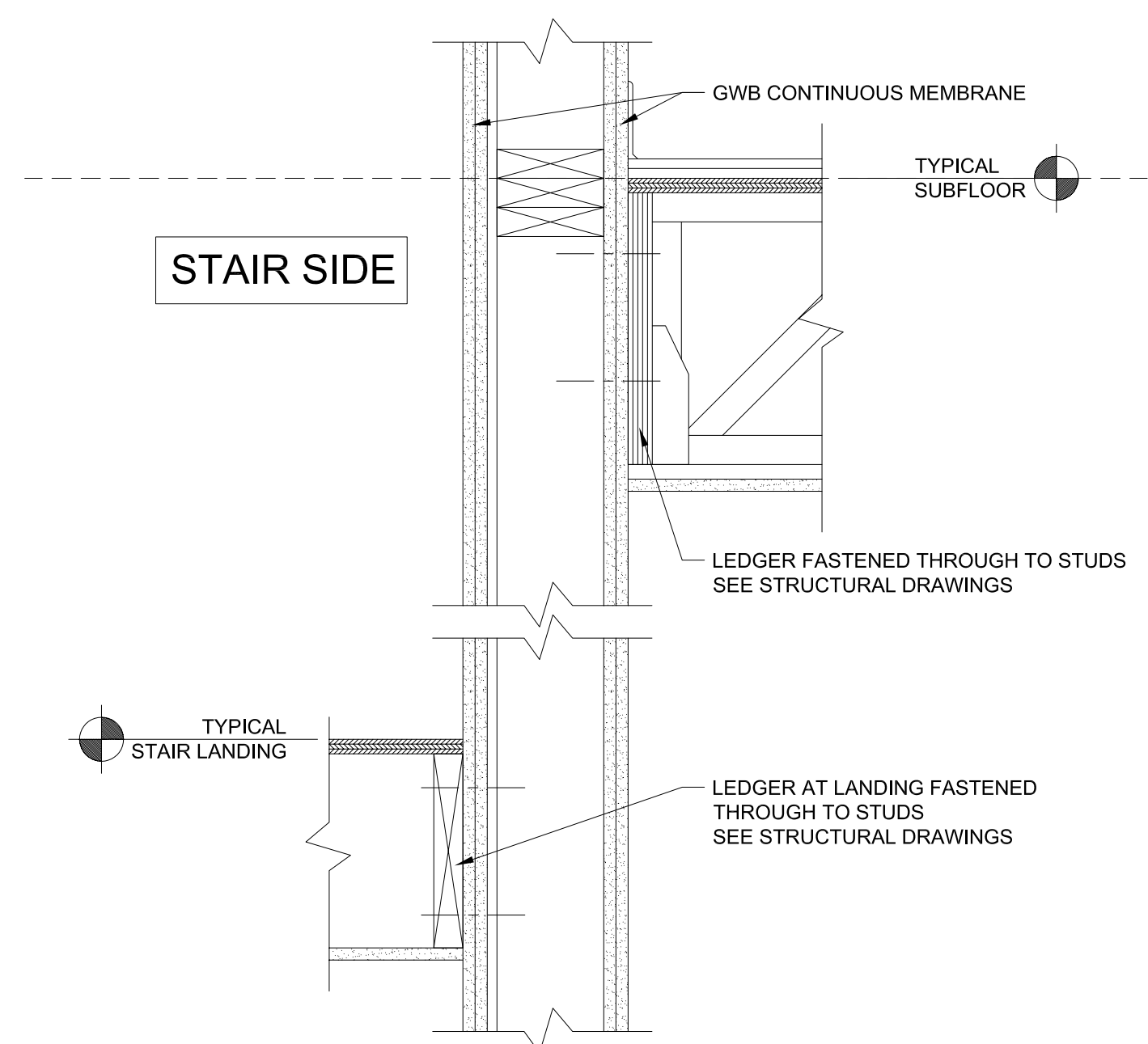


NOTE:
 -DETAIL IS INTENDED FOR ACOUSTICAL SEALING PURPOSES ONLY
 -REFER TO WALL TYPES FOR SPECIFIC WALL ASSEMBLY

6
A5.2 ACOUSTIC ISOLATION DETAIL AT FLOOR ASSEMBLY
 1-1/2" = 1'-0"



5
A5.3 SECTION DETAIL AT FIRE PARTITION / CEILING
 1 - 1/2" = 1'-0"



8
A5.3 SECTION DETAIL AT STAIR WALL
 1 - 1/2" = 1'-0"