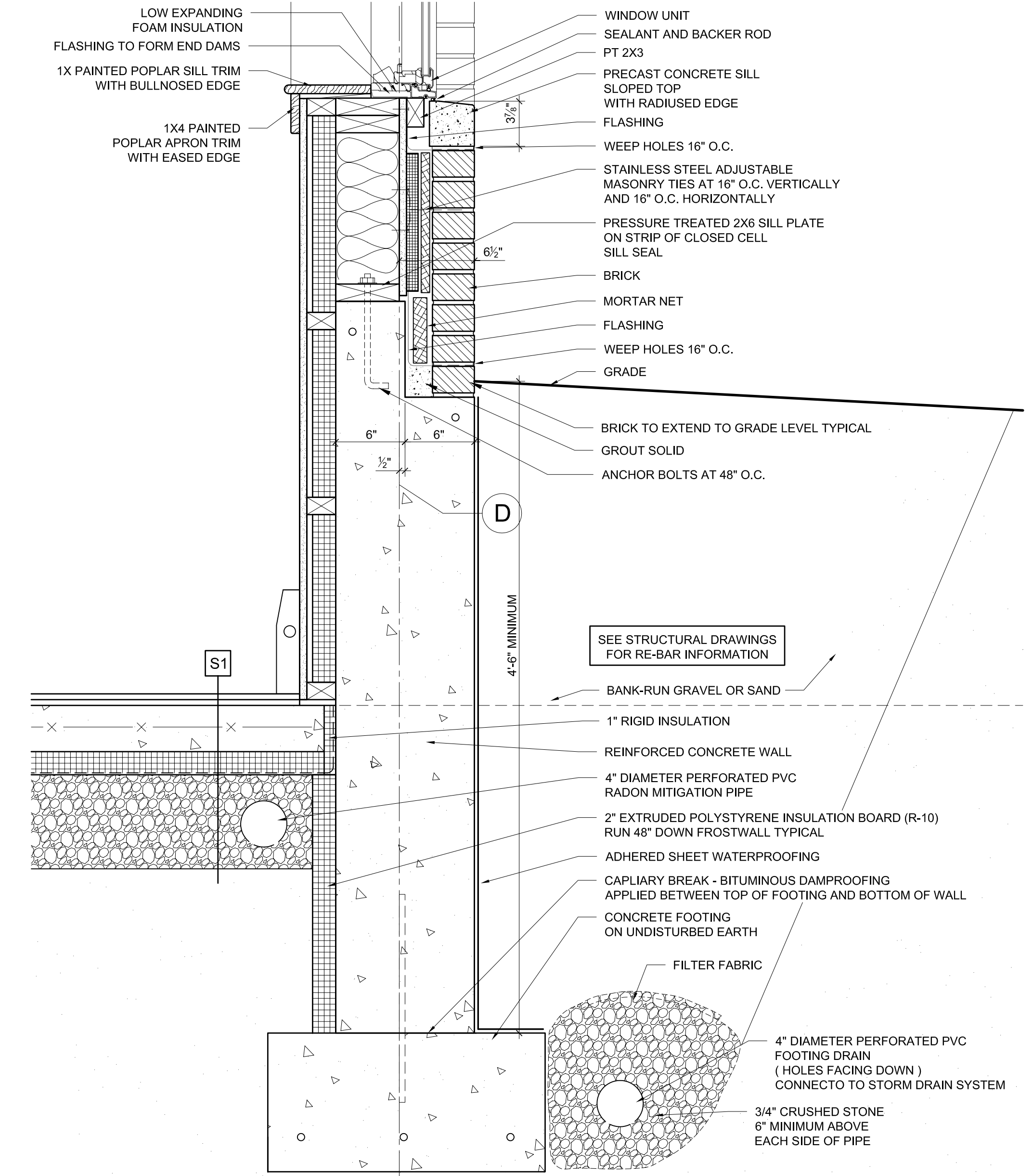
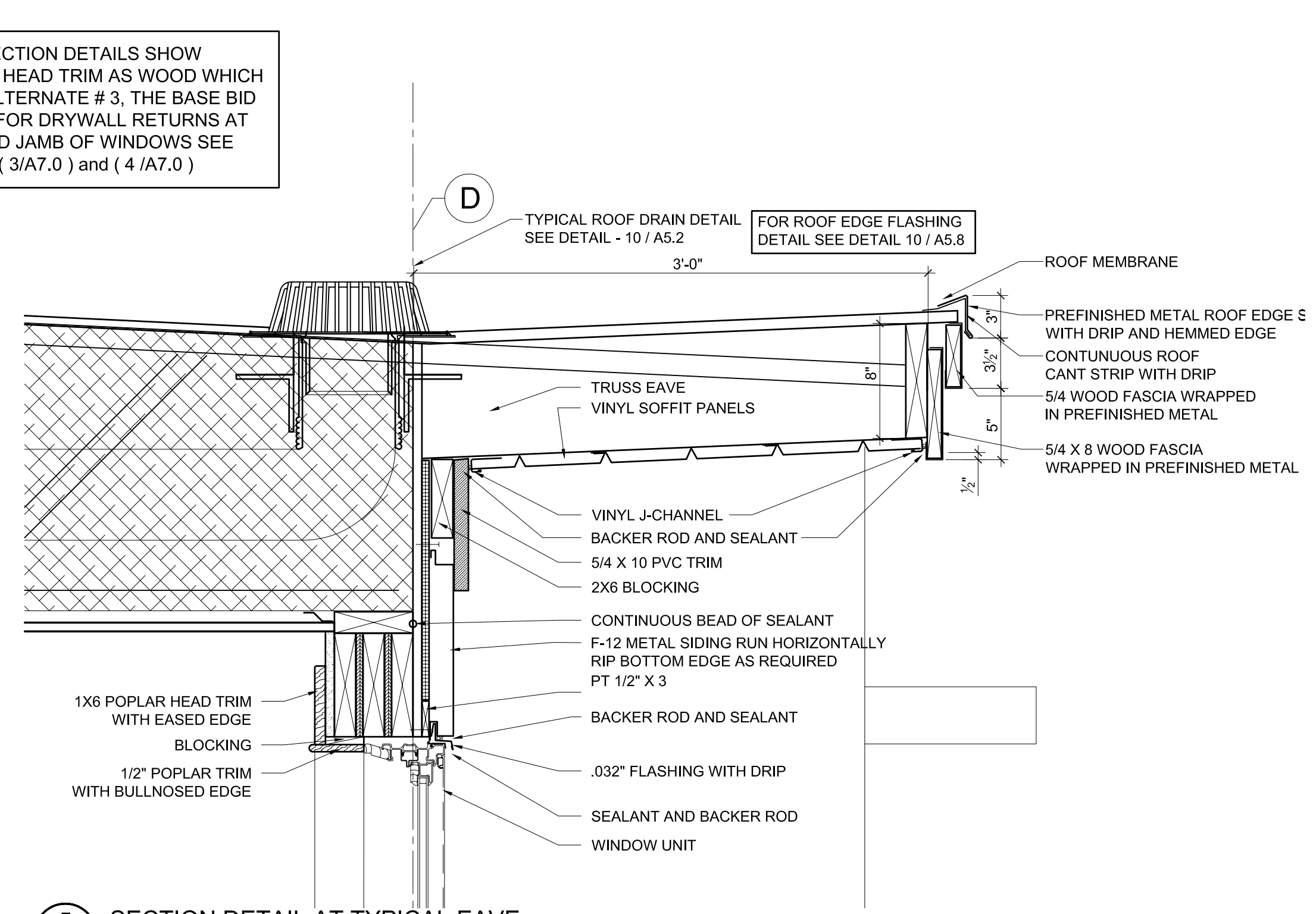


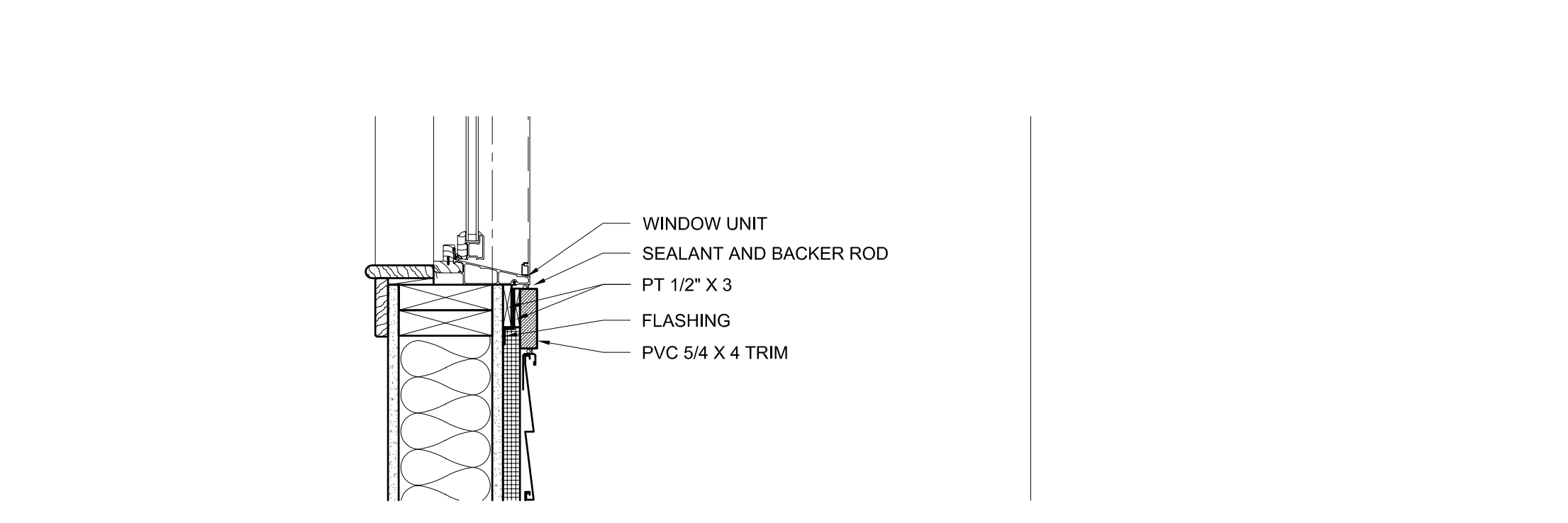
2
A5.0
 SECTION DETAIL AT BRICK WINDOW HEAD AND SILL
 1 - 1/2" = 1'-0"



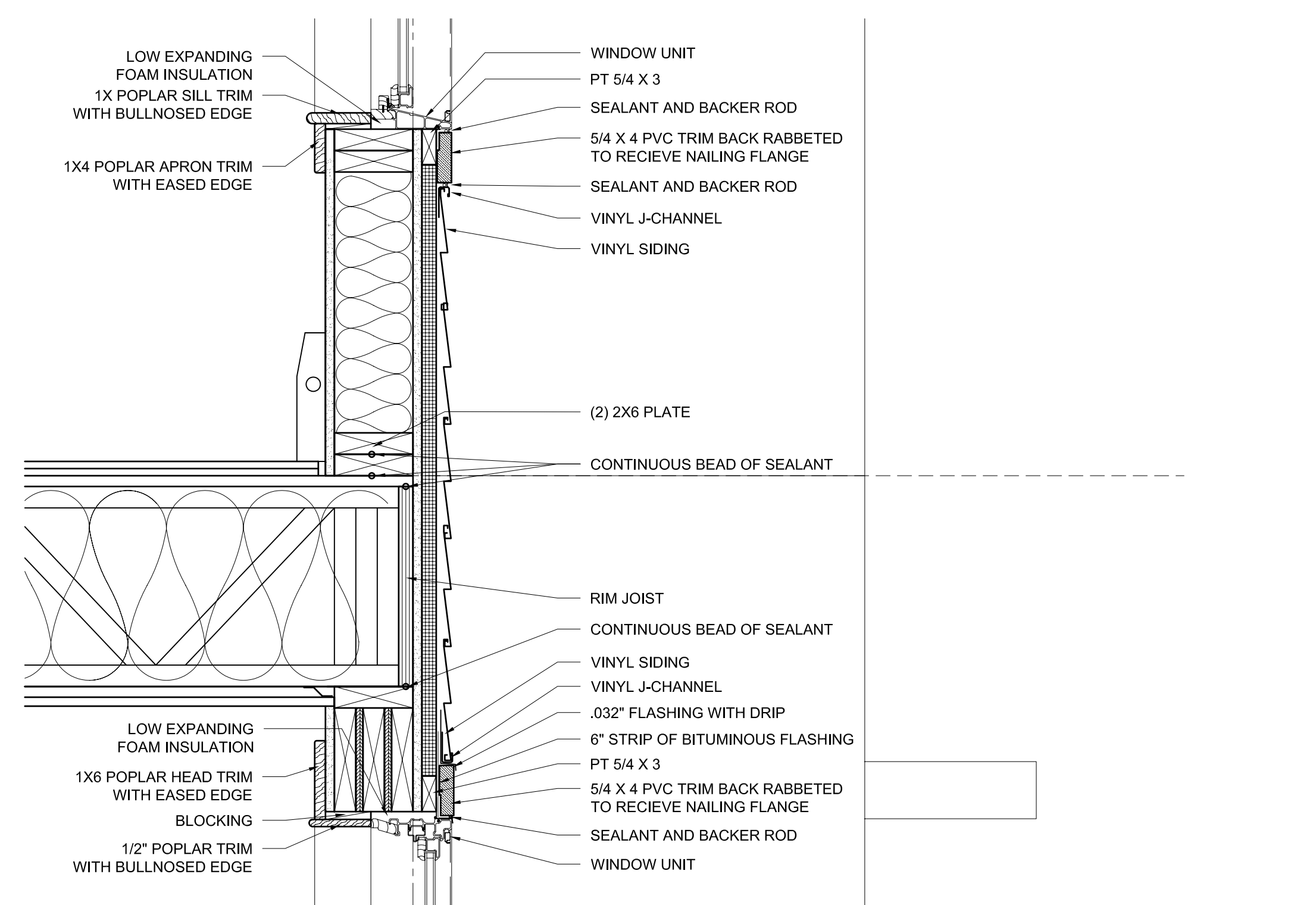
1
A5.0
 SECTION DETAIL AT FROST WALL
 1 - 1/2" = 1'-0"



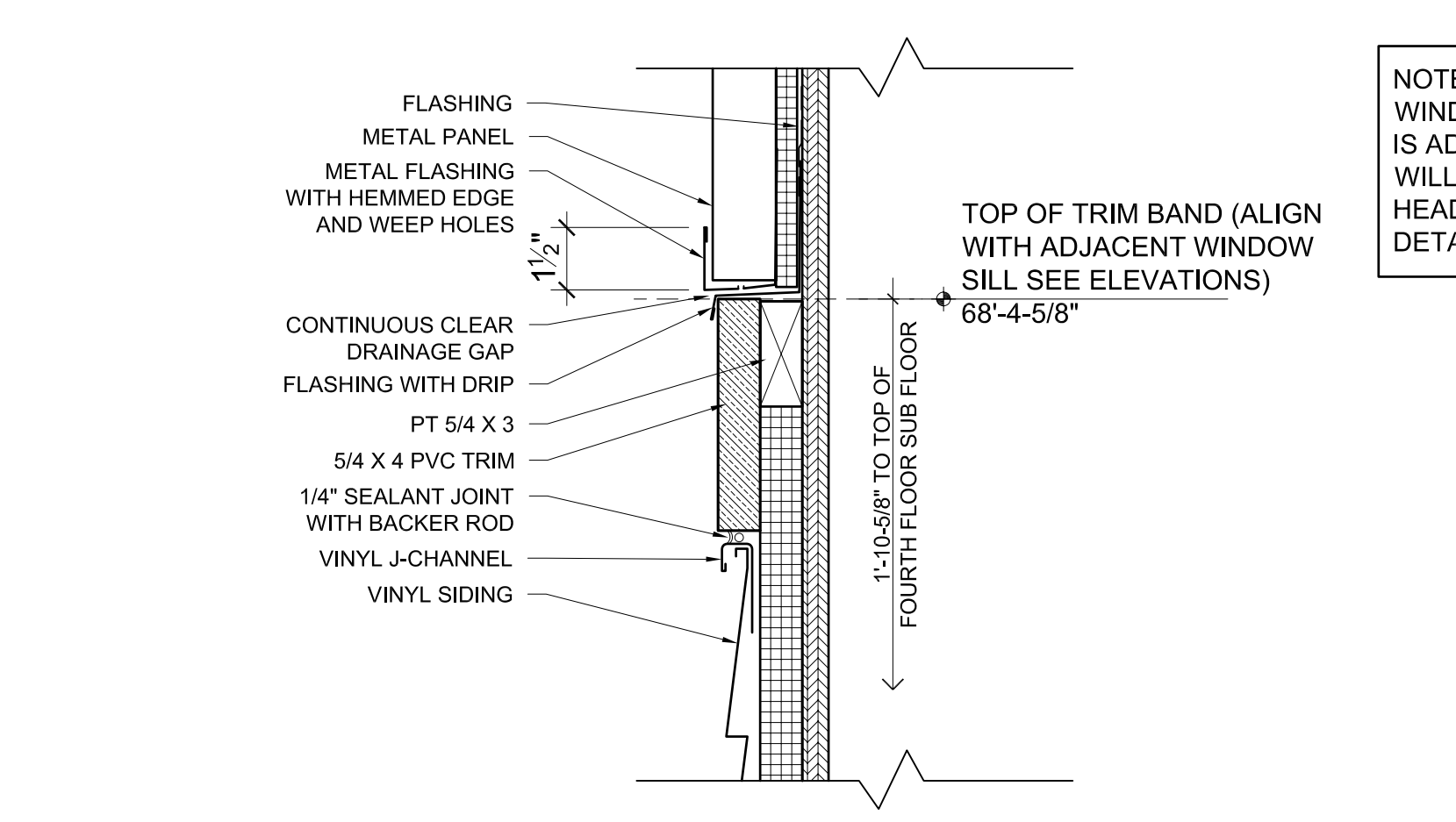
5
A5.0
 SECTION DETAIL AT TYPICAL EAVE
 1 - 1/2" = 1'-0"



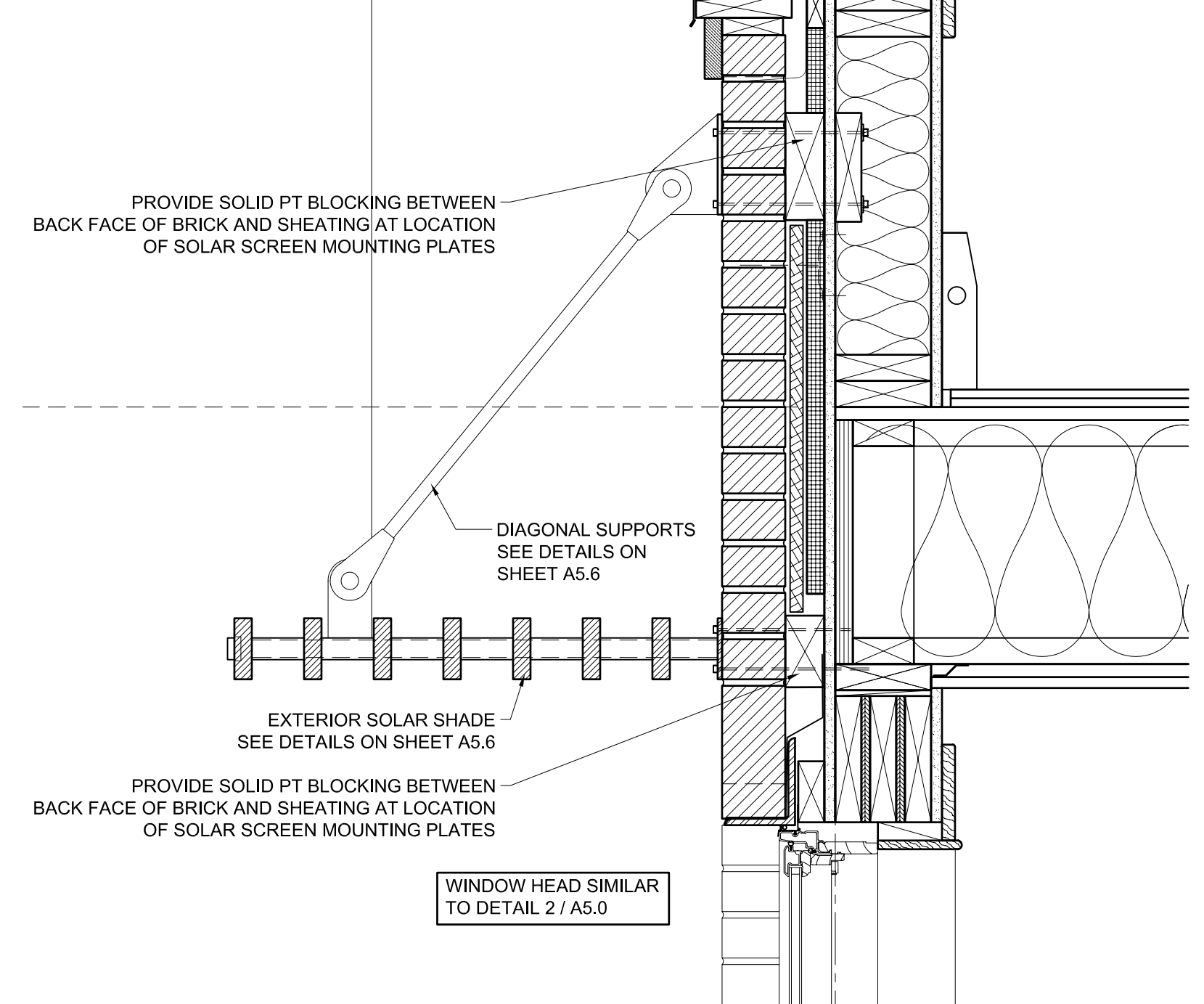
4
A5.0
 SECTION DETAIL AT SIDING WINDOW SILL AT FOURTH FLOOR
 1 - 1/2" = 1'-0"



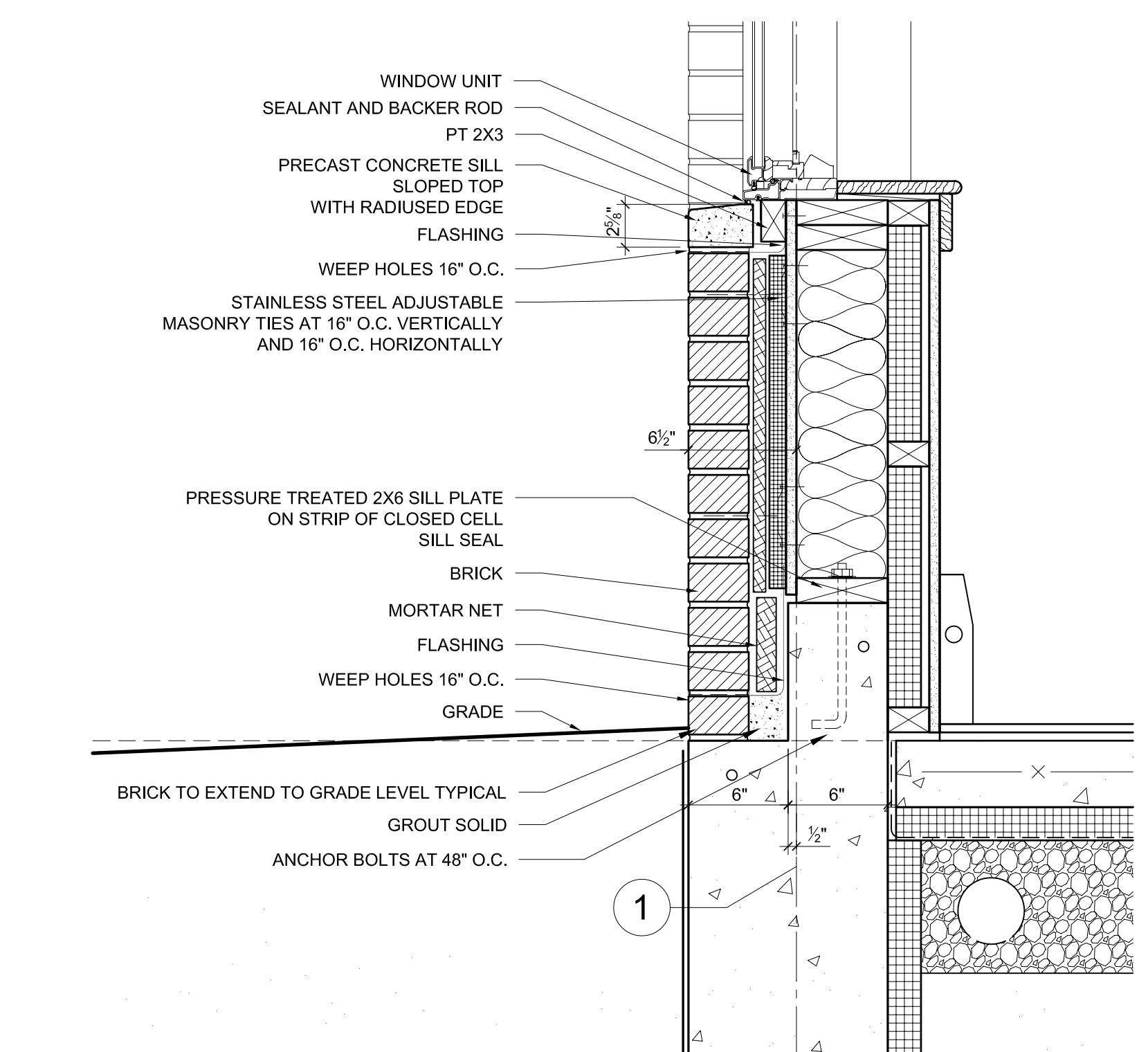
3
A5.0
 SECTION DETAIL AT SIDING WINDOW HEAD AND SILL
 1 - 1/2" = 1'-0"



8
A5.0
 SECTION DETAIL AT SIDING / METAL PANEL TRANSITION
 3" = 1'-0"



7
A5.0
 SECTION DETAIL AT COMMUNITY ROOM CANOPY
 1 - 1/2" = 1'-0"



6
A5.0
 SECTION DETAIL AT FROST WALL
 1 - 1/2" = 1'-0"

NOTE: SECTION DETAILS SHOW WINDOW HEAD TRIM AS WOOD WHICH IS ADD ALTERNATE # 3, THE BASE BID WILL BE FOR DRYWALL RETURNS AT HEAD AND JAMB OF WINDOWS SEE DETAILS (3/A7.0) and (4 /A7.0)