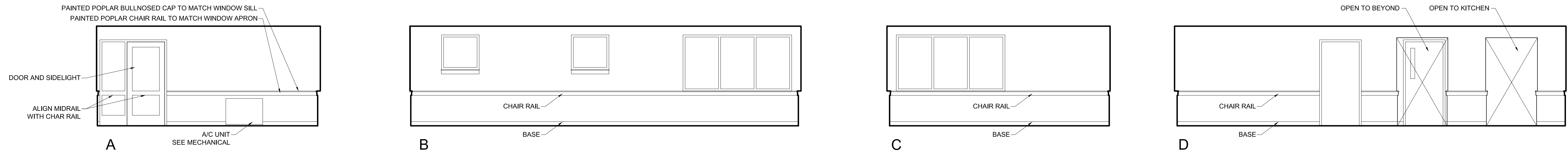
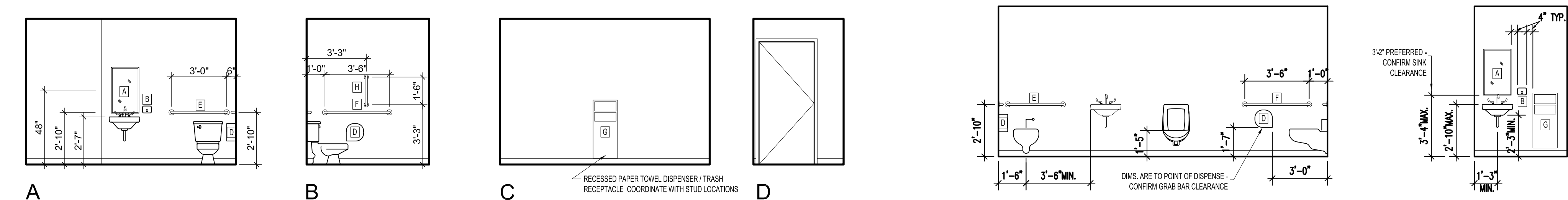


8
A4.0
1/4" = 1'-0"



7
A4.0
1/4" = 1'-0"



NOTES

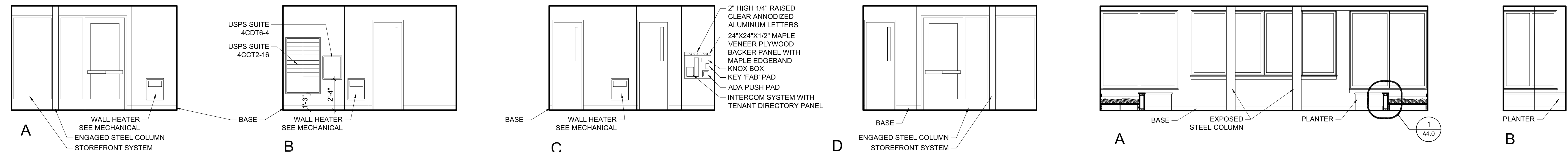
- WHEN GIVEN A RANGE OF DIMENSIONS FOR PLACEMENT, PLACE ALL FIXTURES OF SAME TYPE AT THE SAME ELEVATION THROUGHOUT, UNLESS OTHERWISE DIRECTED.
- MIRRORS TO BE CENTERED OVER SINKS
- PROVIDE APPROPRIATE BLOCKING IN WALLS BEHIND ALL FIXTURES, PARTITIONS, AND ACCESSORIES.

TOILET ACCESSORIES KEY

[A] MIRROR 18" x 36" NOM.
 [B] SOAP DISPENSER - PROBIC
 [C] NOT USED
 [D] TOILET PAPER DISPENSER
 [E] GRAB BAR 36" (1 1/4" TO 1 1/2" O.D.)
 [F] GRAB BAR 42" (1 1/4" TO 1 1/2" O.D.)
 [G] RECESSED PAPER TOWEL DISPENSER / TRASH RECEPTACLE
 [H] GRAB BAR 18" (1 1/4" TO 1 1/2" O.D.)

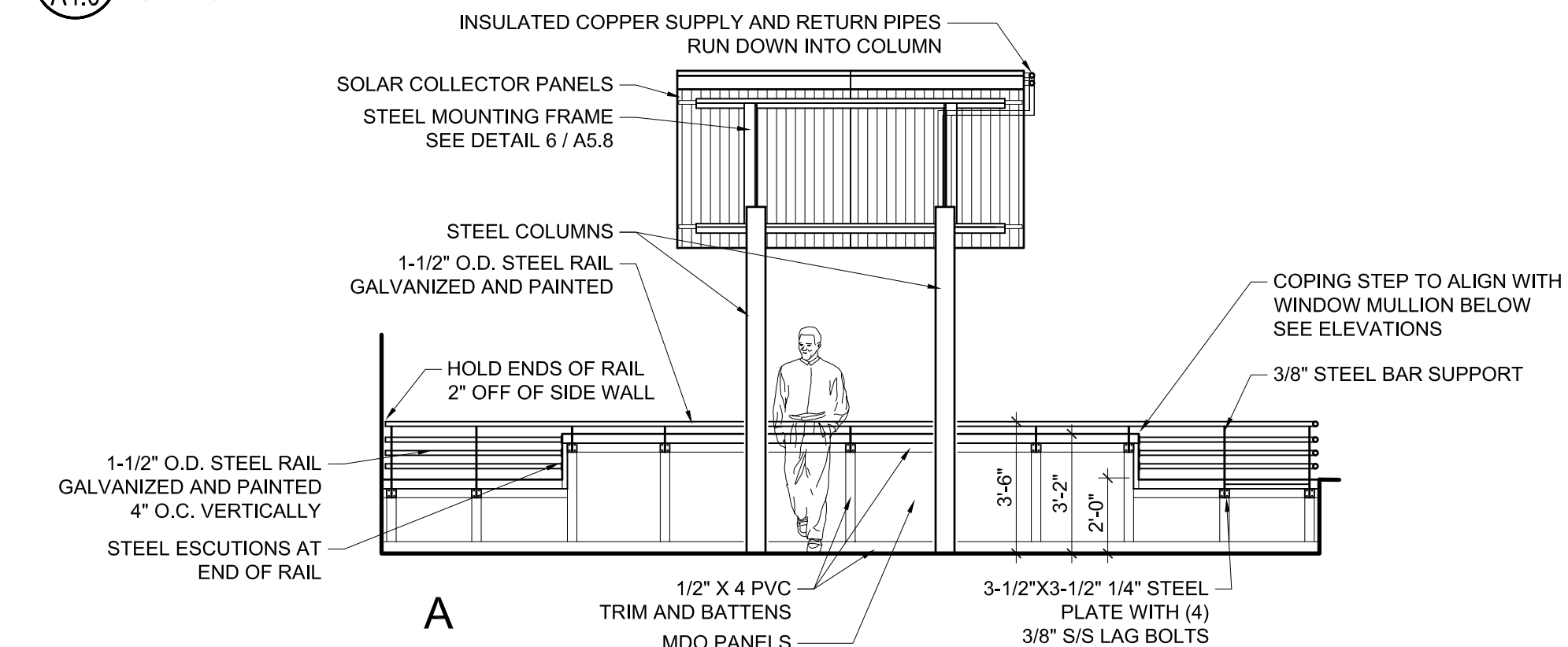
6
A4.0
1/4" = 1'-0"

3
A4.0
1/4" = 1'-0"

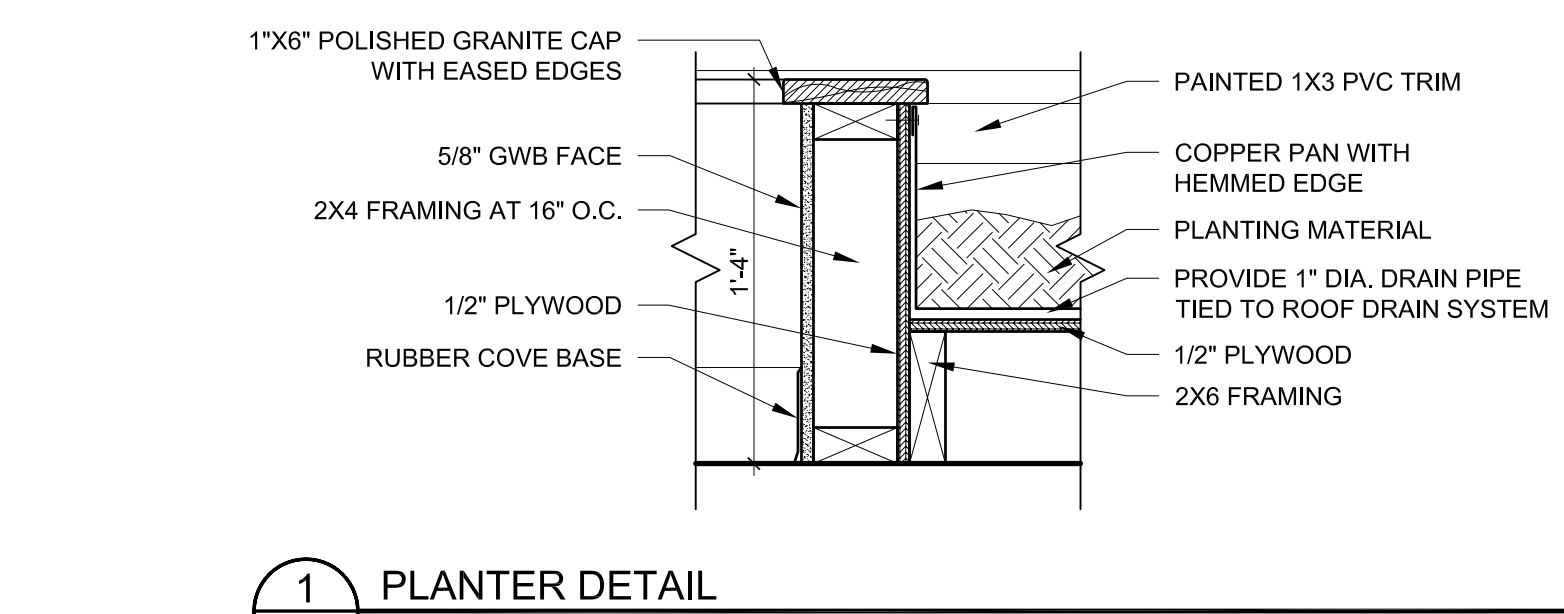
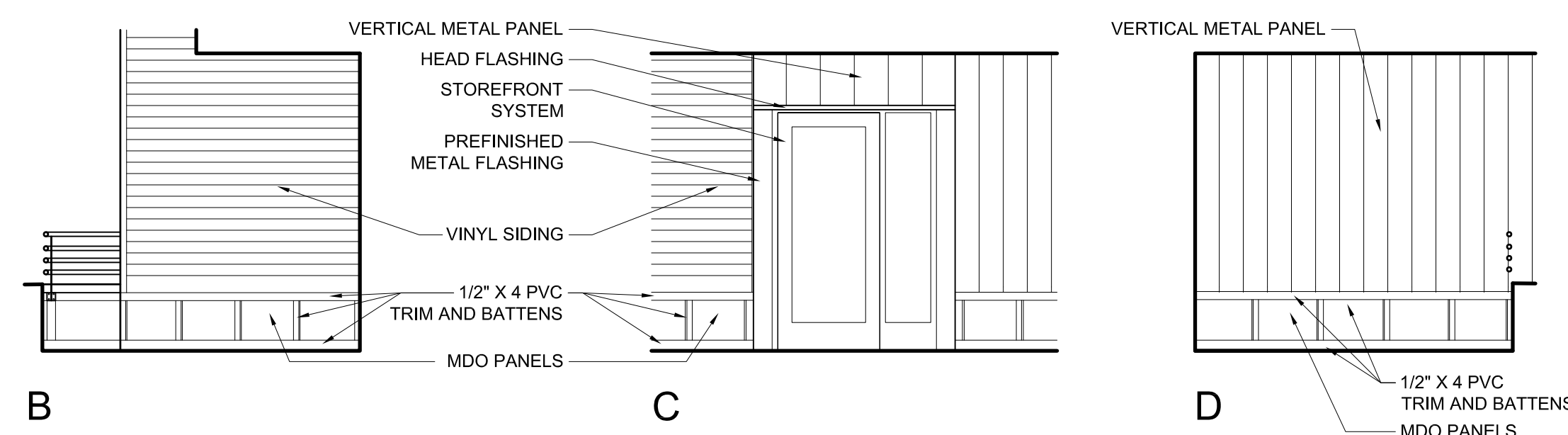


5
A4.0
1/4" = 1'-0"

2
A4.0
1/4" = 1'-0"



4
A4.0
1/4" = 1'-0"



1
A4.0
1-1/2" = 1'-0"