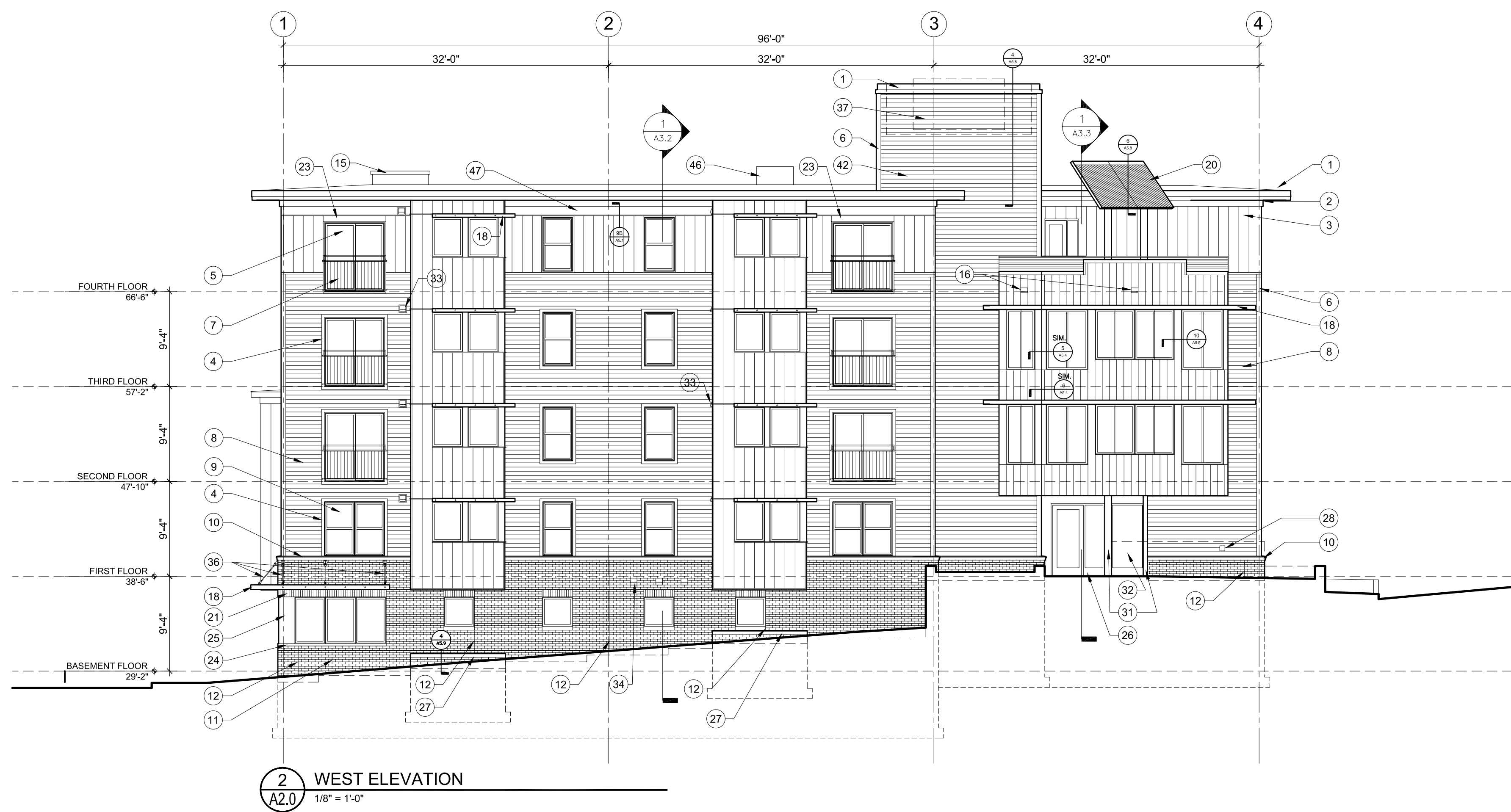
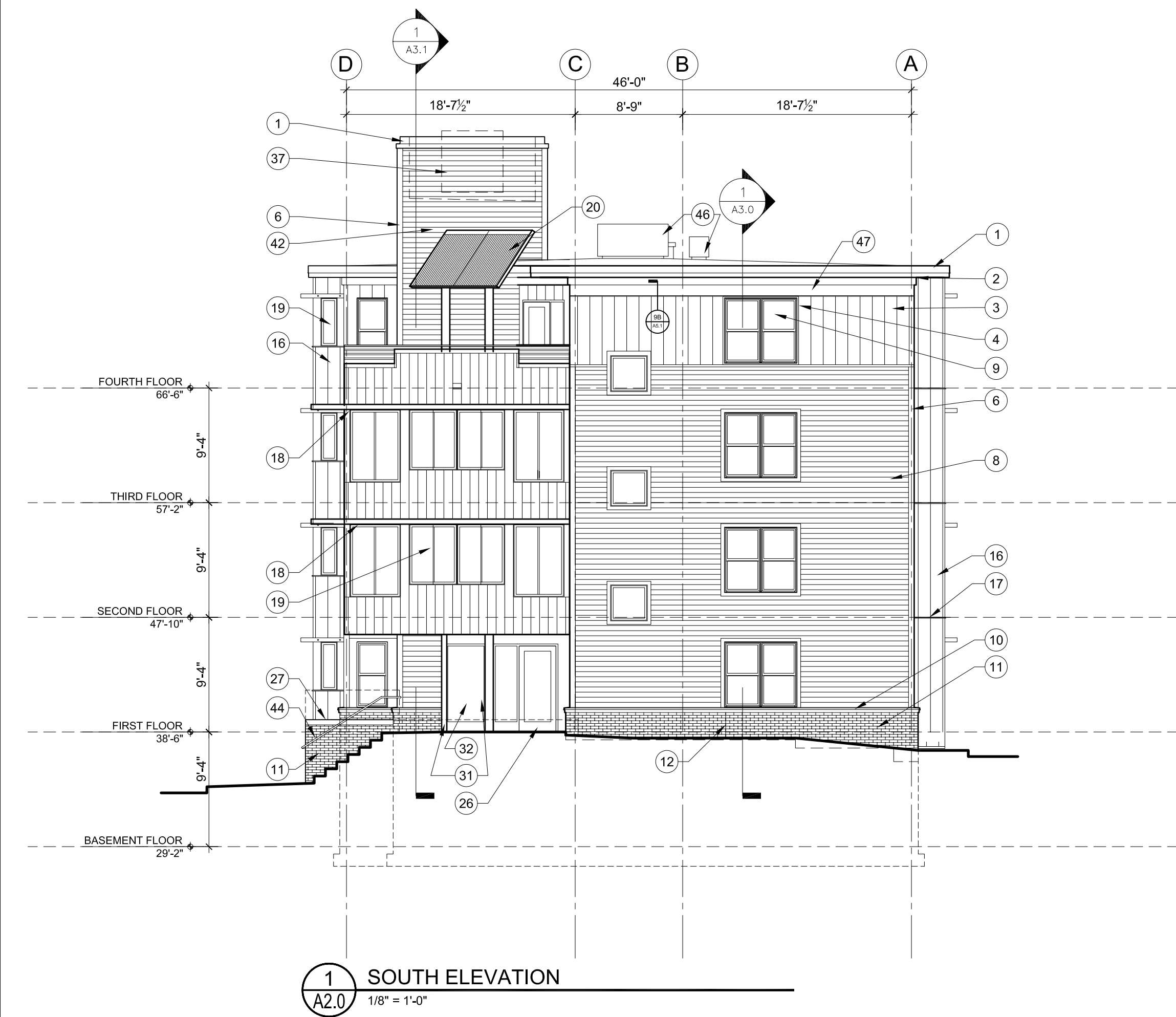


© 2007 TFH ARCHITECTS

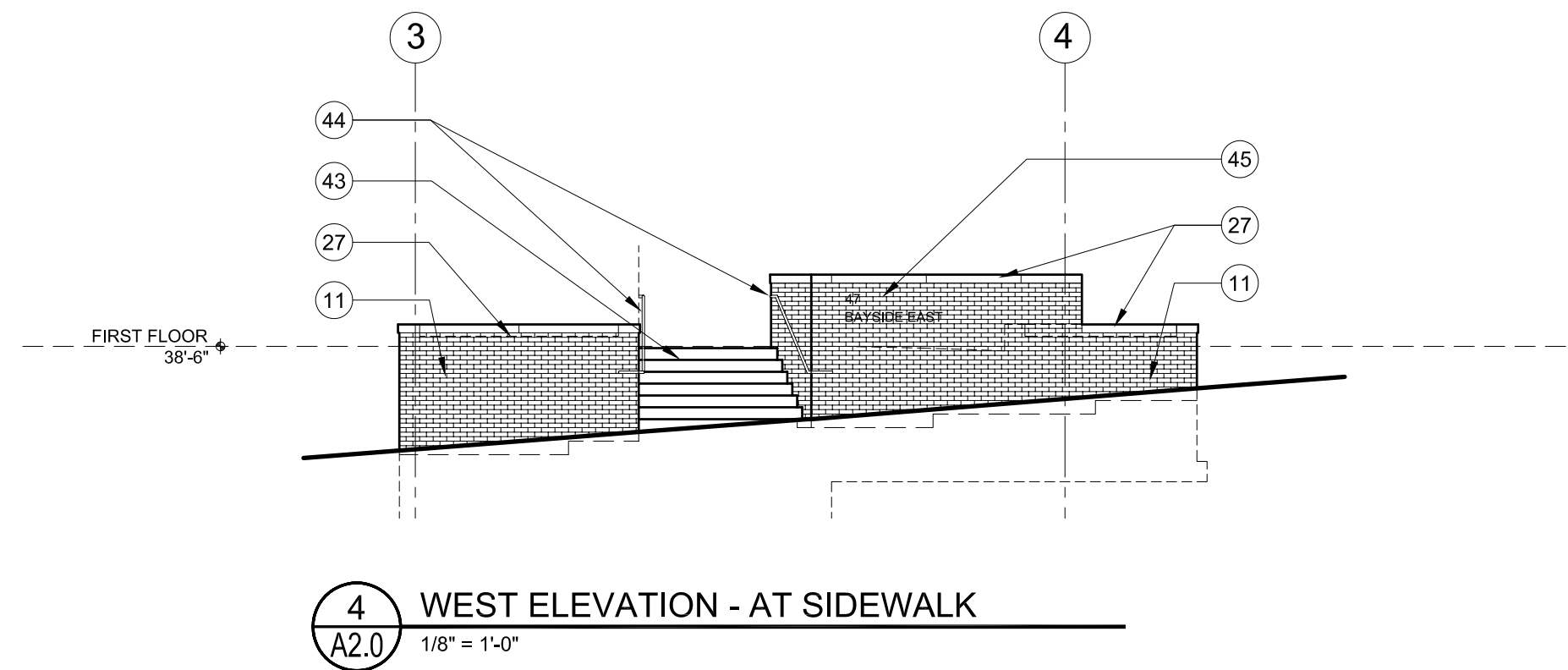
**BAYSIDE EAST**  
 PROPOSED ELDERLY HOUSING  
 47 SMITH STREET, PORTLAND  
 FOR BAYSIDE EAST LP



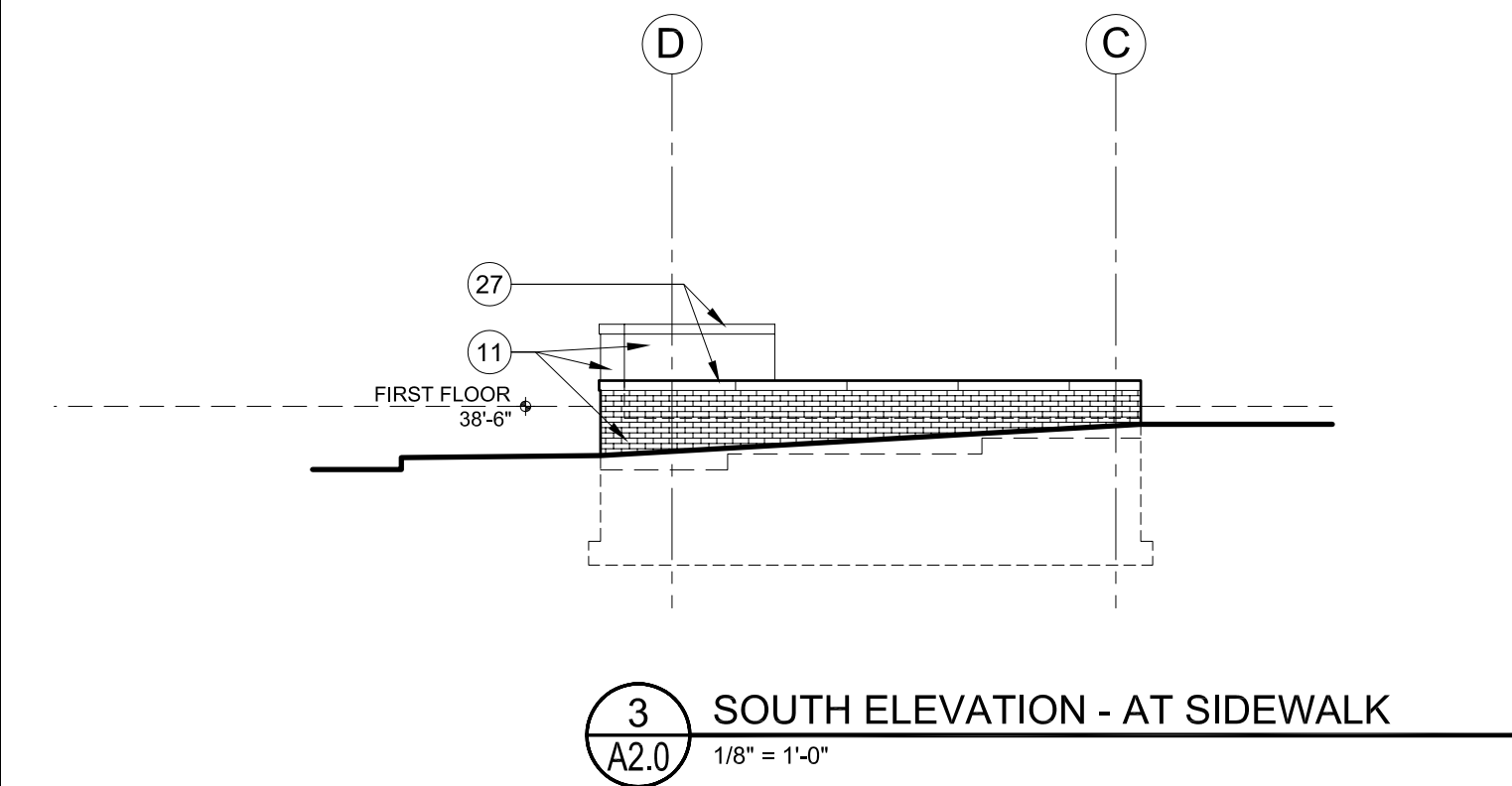
**2 WEST ELEVATION**  
 A2.0 1/8" = 1'-0"



**1 SOUTH ELEVATION**  
 A2.0 1/8" = 1'-0"



**4 WEST ELEVATION - AT SIDEWALK**  
 A2.0 1/8" = 1'-0"



**3 SOUTH ELEVATION - AT SIDEWALK**  
 A2.0 1/8" = 1'-0"

**TFH ARCHITECTS**  
 100 COMMERCIAL STREET  
 PORTLAND MAINE 04101  
 TELEPHONE 207 775 6141  
 ARCHITECTURE PLANNING

**CONSULTANTS:**  
**CIVIL**  
 Frickman and Green Consulting Engineers  
 380 U.S. Route 1  
 Falmouth, ME 04105  
 207-781-6242  
**STRUCTURAL**  
 Structural Design Consulting  
 22 Oakmont Drive  
 Old Orchard Beach, ME 04054  
 207-634-8038  
**MECHANICAL AND ELECTRICAL**  
 Bennett Engineering  
 7 Bennett Road  
 Westbrook, ME 04092  
 207-666-4171

REVISIONS:

DATE: 05/18/07

PROJECT No. 0514

DRAWN BY: RJS

CHECKED BY: TST

SCALE: AS NOTED

SHEET TITLE:  
**EXTERIOR ELEVATIONS**

**A2.0**

EXTERIOR ELEVATIONS LEGEND		
CODE	DESCRIPTION	COLOR
1	ROOF EDGE STRIP - PREFINISHED METAL	(COLOR)
2	FASCIA TRIM - PVC	(COLOR)
3	VERTICAL METAL SIDING	(COLOR)
4	5/4 X 4 PVC TRIM	(COLOR)
5	SLIDING DOOR	(COLOR)
6	5/4 X 6 PVC TRIM	(COLOR)
7	PAINTED METAL GUARD RAIL	(COLOR)
8	VINYL SIDING - 4" EXPOSURE	(COLOR 1)
9	DOUBLE HUNG WINDOW	(COLOR)
10	PREFINISHED METAL WATERTABLE CAP WITH PVC TRIM	(COLOR)
11	BRICK	(COLOR)
12	MASONRY CONTROL JOINT	(COLOR)
13	ELECTRICAL METERS	
14	GAS METER	
15	ROOF HATCH	(COLOR)

EXTERIOR ELEVATIONS LEGEND - CONTINUED		
CODE	DESCRIPTION	COLOR
16	OVERFLOW SCUPPER	
17	ELEVATOR SHAFT VENT AND LOUVER (12" X 36")	
18	EXTERIOR SOLAR SHADE	(COLOR)
19	GLIDER WINDOW	(COLOR)
20	SOLAR COLLECTORS	
21	BRICK SOLDIER HEADER	(COLOR)
22	AWNING WINDOW	(COLOR)
23	PREFINISHED METAL FLASHING	(COLOR)
24	PRECAST CONCRETE WINDOW SILL	(COLOR)
25	PAINTED STEEL TRIM	(COLOR)
26	STOREFRONT DOOR WITH SIDELIGHT	(COLOR)
27	PRECAST CONCRETE CAP TO BRICK WALL	(COLOR)
28	ADA - DOOR OPENER PUSH PAD	
29	PORCH COLUMN	(COLOR)
30	FIRE DEPARTMENT CONNECTION	

EXTERIOR ELEVATIONS LEGEND - CONTINUED		
CODE	DESCRIPTION	COLOR
31	ENGAGED COLUMN	(COLOR)
32	STOREFRONT	(COLOR)
33	EXHAUST WALL CAP	
34	SOFFIT MOUNTED DRYER EXHAUST VENTS	
35	BRICK RETURN AT JAMB	
36	DIAGONAL CANOPY SUPPORT	(COLOR)
37	ROOFTOP GENERATOR WITHIN NOISE CONTROL ENCLOSURE	
38	METAL GRAB RAIL & LADDER STAIR	(COLOR)
39	ACCESS GATE TO MECHANICAL ENCLOSURE	(COLOR)
40	MECHANICAL LOUVER - COORD. W / BRICK	PAINT TO MATCH ADJACENT BRICK
41	BOILER VENTS	PAINT TO MATCH ADJACENT BRICK
42	VINYL SIDING - 4" EXPOSURE	(COLOR 2)
43	GRANITE STEPS	
44	METAL HAND RAIL	
45	SIGNAGE	

EXTERIOR ELEVATIONS LEGEND - CONTINUED		
CODE	DESCRIPTION	COLOR
46	ROOFTOP MECHANICAL UNITS	
47	METAL SIDING PANEL RUN HORIZONTALLY	(COLOR)