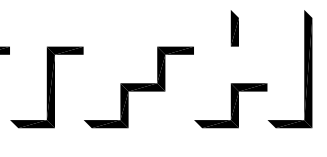


© 2007 TFH ARCHITECTS

BAYSIDE EAST
 PROPOSED ELDERLY HOUSING
 47 SMITH STREET, PORTLAND
 FOR BAYSIDE EAST LP



TFH ARCHITECTS
 100 COMMERCIAL STREET
 PORTLAND MAINE 04101
 TELEPHONE 207 775 6141
 ARCHITECTURE PLANNING

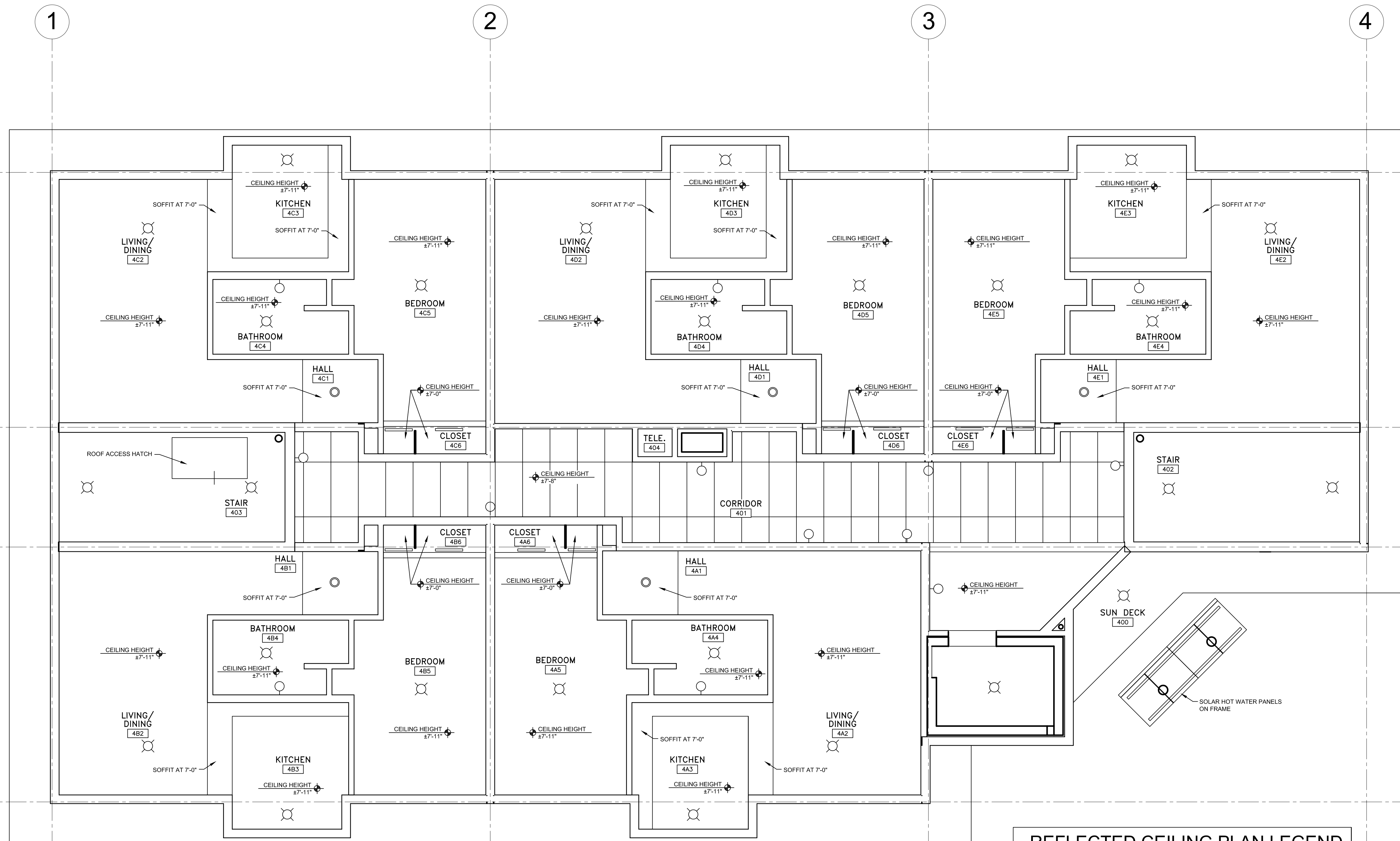
CONSULTANTS:
SKILL
 Plumb and Greer Consulting Engineers
 350 US Route 1
 Falmouth, ME 04105
 207-781-5242
STRUCTURAL
 Structural Design Consulting
 22 Oakmont Drive
 236 Orchard Beach, ME 04094
 207-934-8038
MECHANICAL AND ELECTRICAL
 Bennett Engineering
 7 Bennett Road
 Frenoville, ME 04032
 207-866-9475

REVISIONS:

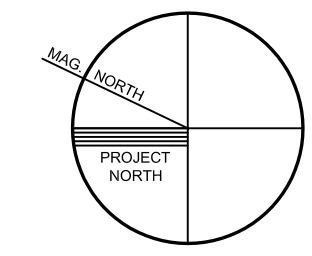
DATE: 05/18/07
 PROJECT No. 0514
 DRAWN BY: RJS
 CHECKED BY: TST
 SCALE: AS NOTED

SHEET TITLE:
 FOURTH FLOOR
 REFLECTED
 CEILING PLAN

A1.10



REFLECTED CEILING PLAN LEGEND	
	RECESSED LIGHT FIXTURE
	SURFACE MOUNTED LIGHT FIXTURE
	STRIP FLUORESCENT FIXTURE
	CEILING HEIGHT ELEVATION TAG
	24" X 48" ACOUSTICAL TILE
	1X4 VERTICAL GRAIN FIR WOOD SLATS CLEAR FINISH
	12"x12" ADHERED ACOUSTICAL TILE
	FIRE RATED ACCESS PANEL NOTE: NOT ALL ACCESS PANELS ARE SHOWN ON REFLECTED CEILING PLANS ONLY PLUMBING TRAP ACCESS PANELS



1 FOURTH FLOOR REFLECTED CEILING PLAN
 1/4" = 1'-0"