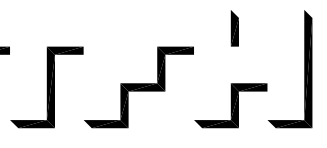


© 2007 TFH ARCHITECTS

**BAYSIDE EAST**  
 PROPOSED ELDERLY HOUSING  
 47 SMITH STREET, PORTLAND  
 FOR BAYSIDE EAST LP



TFH ARCHITECTS  
 100 COMMERCIAL STREET  
 PORTLAND MAINE 04101  
 TELEPHONE 207 775 6141  
 ARCHITECTURE PLANNING

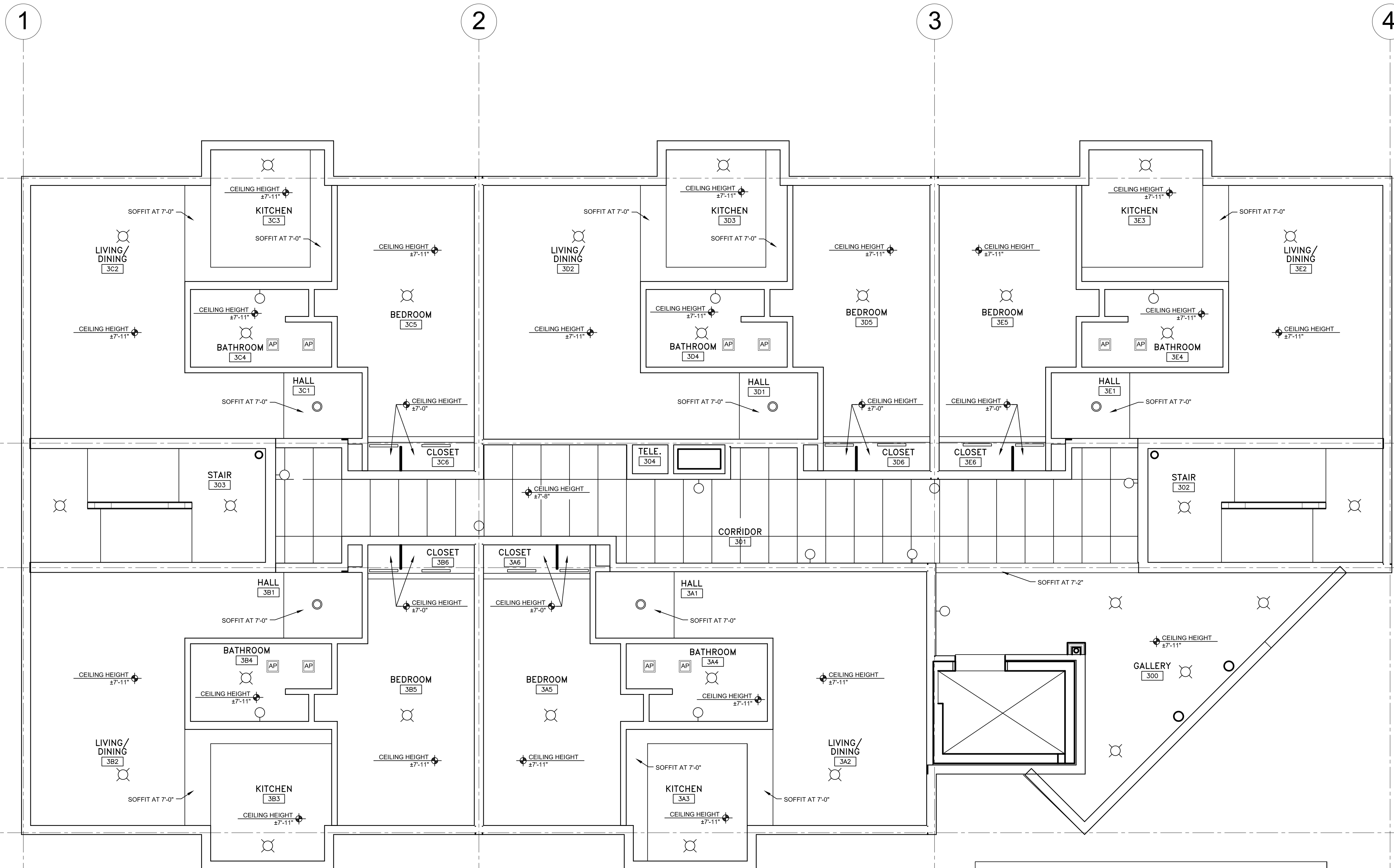
CONSULTANTS:  
**DBL**  
 Platten and Greer Consulting Engineers  
 350 US Route 1  
 Falmouth, ME 04105  
 207-781-5242  
**STRUCTURAL**  
 Structural Design Consulting  
 22 Oakmont Drive  
 236 Orchard Beach, ME 04094  
 207-934-8038  
**MECHANICAL AND ELECTRICAL**  
 Bennett Engineering  
 7 Bennett Road  
 Frenoville, ME 04032  
 207-865-9475

REVISIONS:

DATE: 05/18/07  
 PROJECT No. 0514  
 DRAWN BY: RJS  
 CHECKED BY: TST  
 SCALE: AS NOTED

SHEET TITLE:  
**THIRD FLOOR REFLECTED CEILING PLAN**

**A1.9**



**REFLECTED CEILING PLAN LEGEND**

	RECESSED LIGHT FIXTURE
	SURFACE MOUNTED LIGHT FIXTURE
	STRIP FLUORESCENT FIXTURE
	CEILING HEIGHT ELEVATION TAG
	24" X 48" ACOUSTICAL TILE
	1X4 VERTICAL GRAIN FIR WOOD SLATS CLEAR FINISH
	12"X12" ADHERED ACOUSTICAL TILE
	FIRE RATED ACCESS PANEL NOTE: NOT ALL ACCESS PANEL ARE SHOWN ON REFLECTED CEILING PLANS ONLY PLUMBING TRAP ACCESS PANELS

