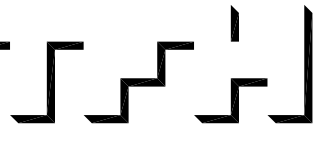


© 2007 TFH ARCHITECTS

BAYSIDE EAST
 PROPOSED ELDERLY HOUSING
 47 SMITH STREET, PORTLAND
 FOR BAYSIDE EAST LP



TFH ARCHITECTS
 100 COMMERCIAL STREET
 PORTLAND MAINE 04101
 TELEPHONE 207 775 6141
 ARCHITECTURE PLANNING

CONSULTANTS:
SOILS
 Pritchard and Greer Consulting Engineers
 350 US Route 1
 Falmouth, ME 04105
 207-781-5242
STRUCTURAL
 Structural Design Consulting
 22 Oakmont Drive
 636 Orchard Beach, ME 04054
 207-934-8038
MECHANICAL AND ELECTRICAL
 Bennett Engineering
 7 Bennett Road
 Frensort, ME 04032
 207-866-9475

REVISIONS:

DATE: 05/18/07

PROJECT No. 0514

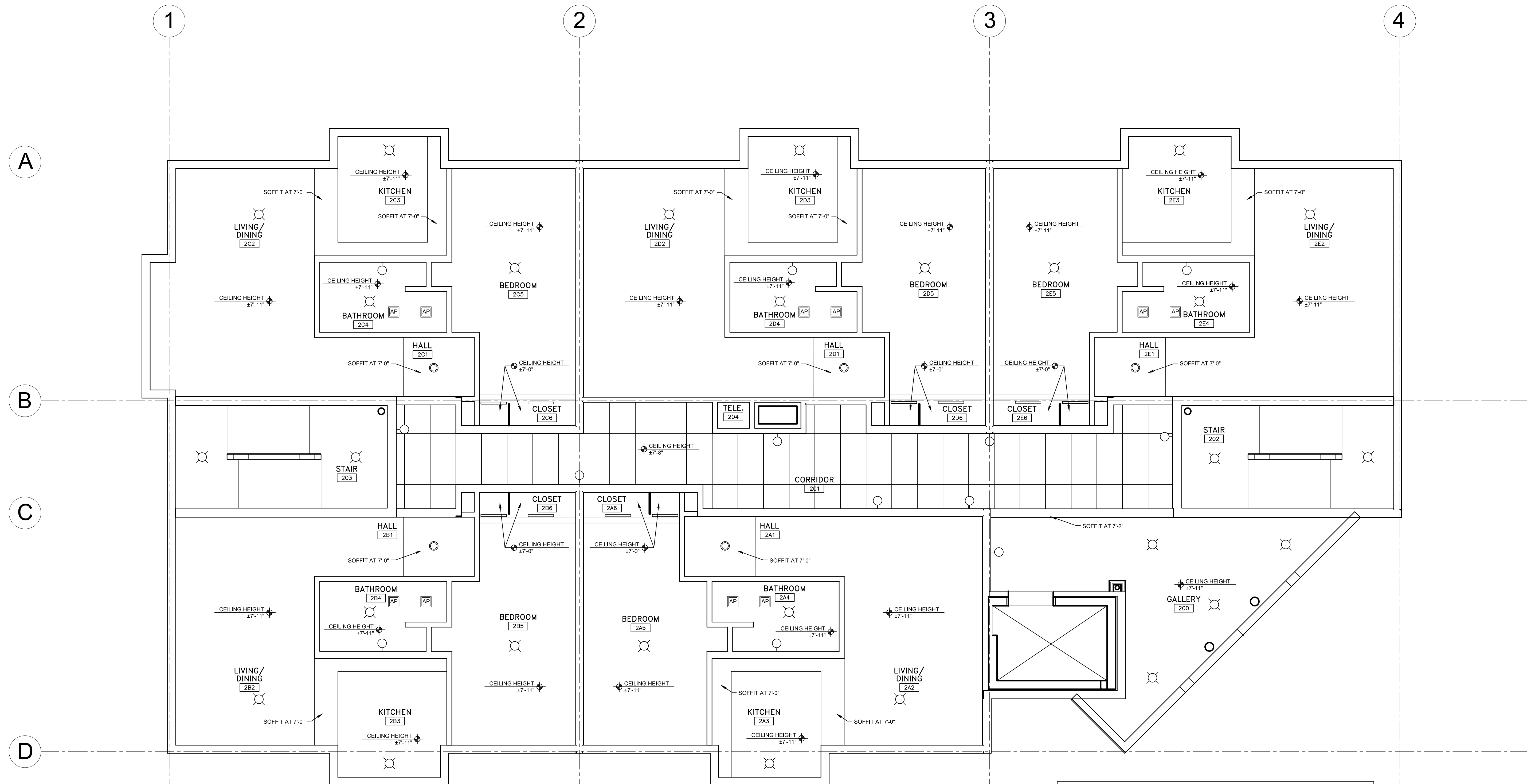
DRAWN BY: RJS

CHECKED BY: TST

SCALE: AS NOTED

SHEET TITLE:
**SECOND FLOOR
 REFLECTED
 CEILING PLAN**

A1.8



REFLECTED CEILING PLAN LEGEND	
	RECESSED LIGHT FIXTURE
	SURFACE MOUNTED LIGHT FIXTURE
	STRIP FLUORESCENT FIXTURE
	CEILING HEIGHT ELEVATION TAG
	24" X 48" ACOUSTICAL TILE
	1/4" VERTICAL GRAIN FIR WOOD SLATS CLEAR FINISH
	12"x12" ADHERED ACOUSTICAL TILE
	FIRE RATED ACCESS PANEL NOTE: NOT ALL ACCESS PANEL ARE SHOWN ON REFLECTED CEILING PLANS ONLY PLUMBING TRAP ACCESS PANELS

