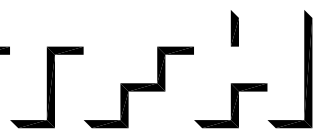


© 2007 TFH ARCHITECTS

BAYSIDE EAST
 PROPOSED ELDERLY HOUSING
 47 SMITH STREET, PORTLAND
 FOR BAYSIDE EAST LP



TFH ARCHITECTS
 100 COMMERCIAL STREET
 PORTLAND MAINE 04101
 TELEPHONE 207 775 6141
 ARCHITECTURE PLANNING

CONSULTANTS:
SOIL
 Pridmore and Greer Consulting Engineers
 350 US Route 1
 Falmouth, ME 04105
 207-781-5242
STRUCTURAL
 Structural Design Consulting
 22 Oakmont Drive
 236 Orchard Beach, ME 04094
 207-934-8038
MECHANICAL AND ELECTRICAL
 Bennett Engineering
 7 Bennett Road
 Friesnop, ME 04032
 207-866-9475

REVISIONS:

DATE: 05/18/07

PROJECT No. 514

DRAWN BY: RUS

CHECKED BY: TST

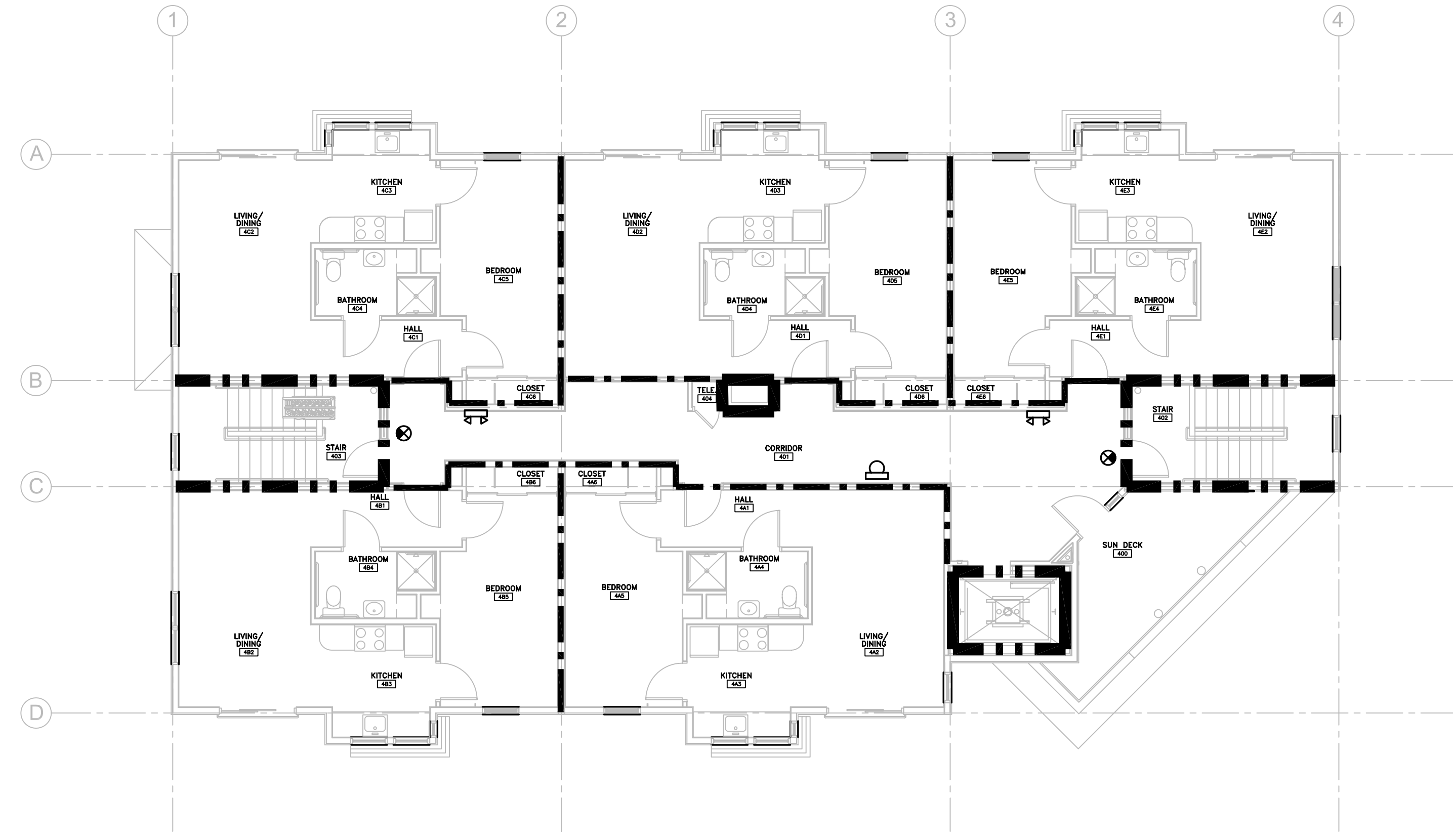
SCALE: AS NOTED

SHEET TITLE:
 Third and Fourth
 Life Safety Plans

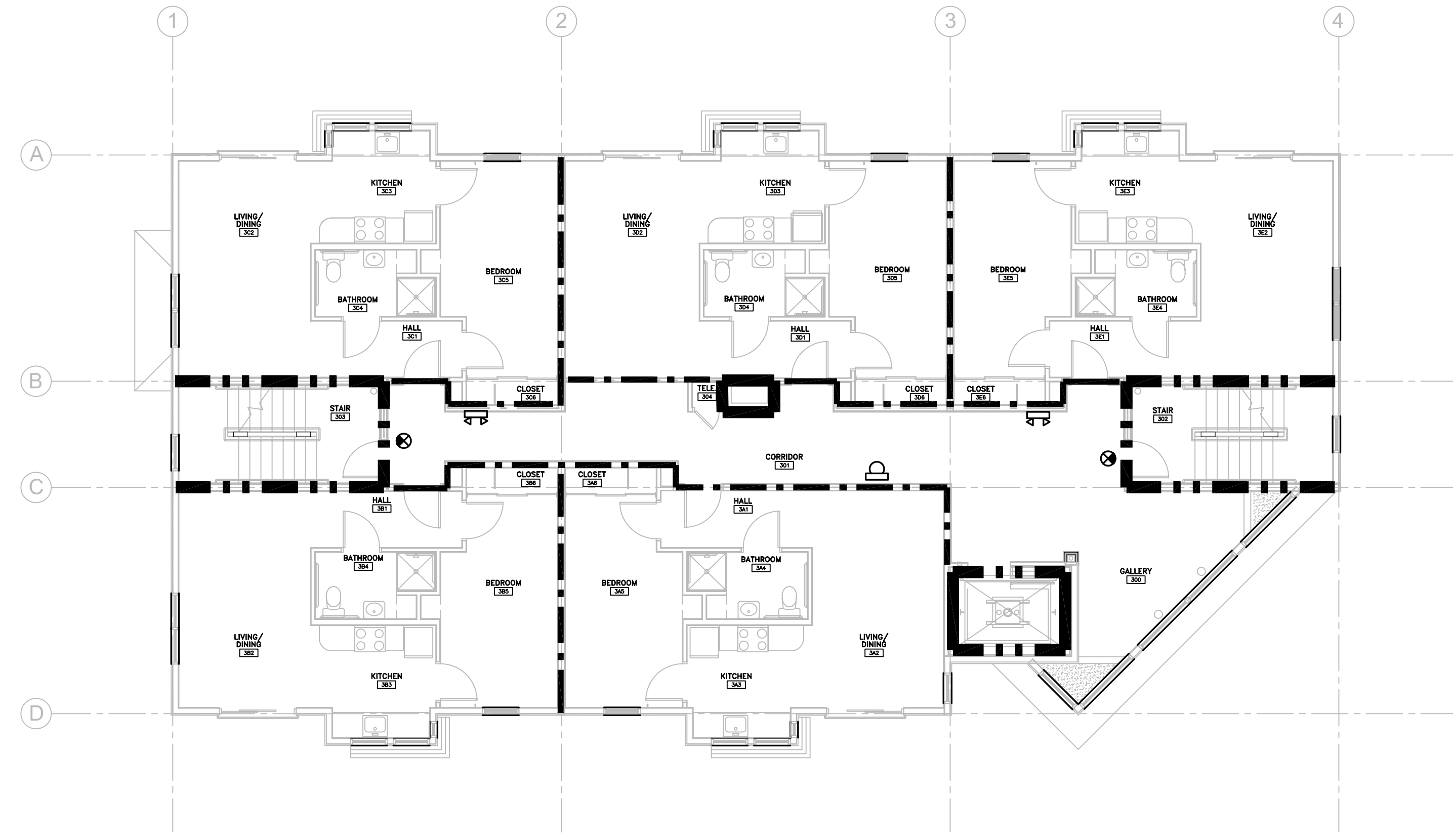
G1.3

LIFE SAFETY DRAWING LEGEND	
FIRE EXTINGUISHER	
EXIT SIGN	
EMERGENCY LIGHT	
ONE (1) HOUR SEPARATION	
TWO (2) HOUR SEPARATION	

DRAWING SHOWS RATINGS OF FIRE SEPARATIONS WALLS ONLY FOR ALL RATED WALLS SEE WALL TYPES AND PLAN SHEETS



2 FOURTH FLOOR LIFE SAFETY PLAN
 G1.3 1/8" = 1'-0"



1 THIRD FLOOR LIFE SAFETY PLAN
 G1.3 1/8" = 1'-0"