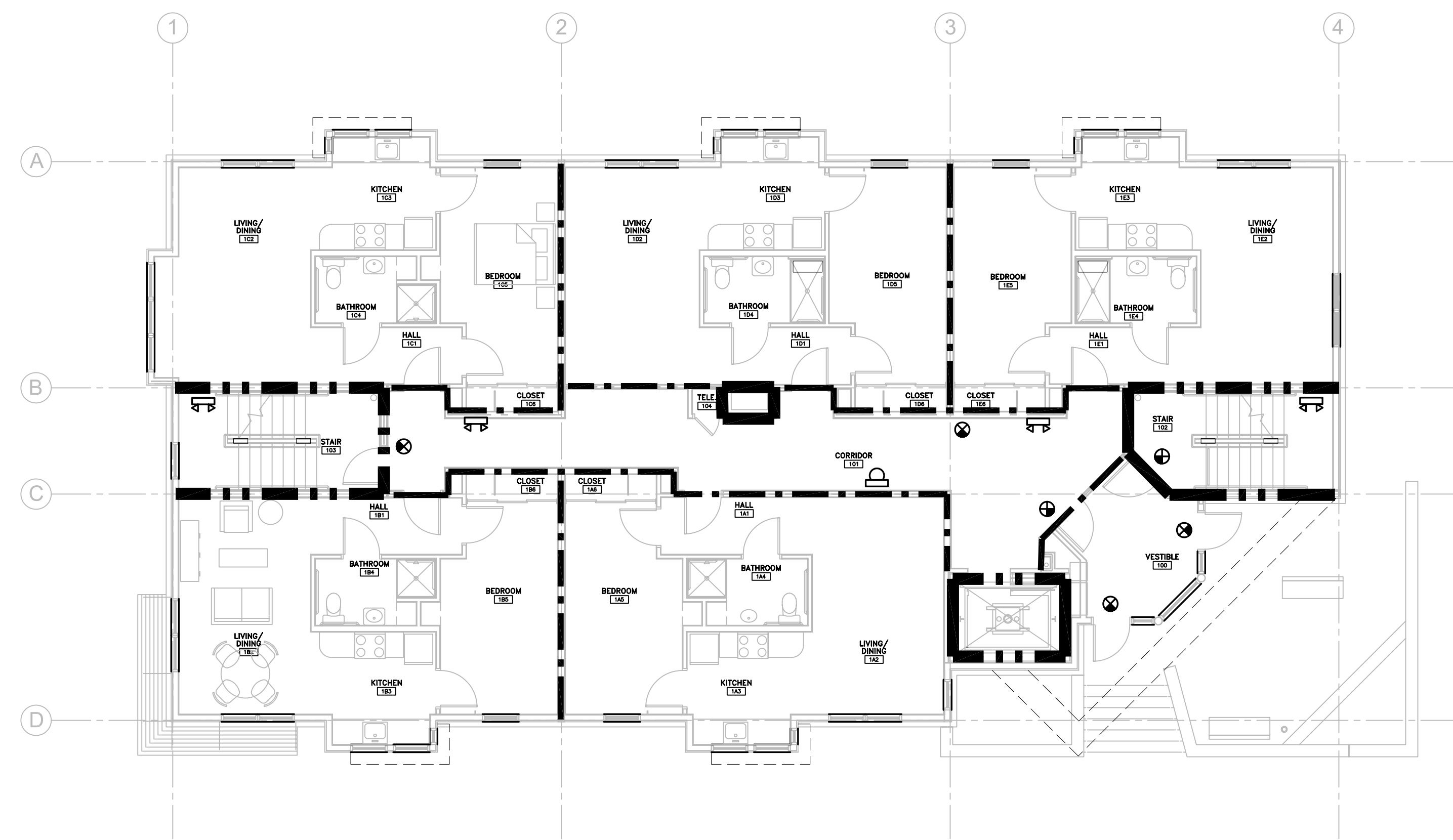


© 2007 TFH ARCHITECTS

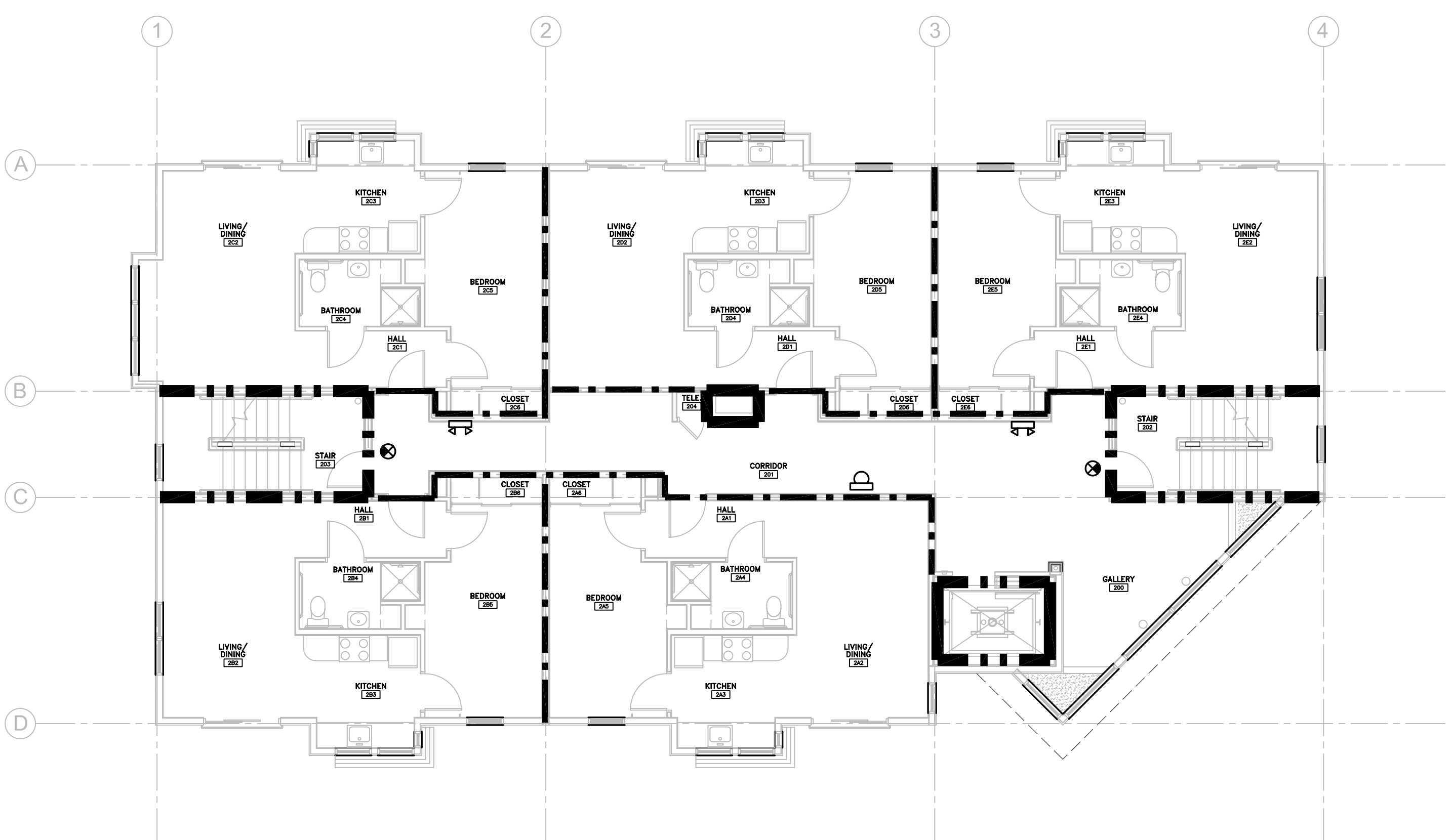
BAYSIDE EAST
 PROPOSED ELDERLY HOUSING
 47 SMITH STREET, PORTLAND
 FOR BAYSIDE EAST LP

LIFE SAFETY DRAWING LEGEND	
FIRE EXTINGUISHER	☐
EXIT SIGN	⊗
EMERGENCY LIGHT	⊕
ONE (1) HOUR SEPARATION	— · — · — ·
TWO (2) HOUR SEPARATION	— · · — · · — · ·

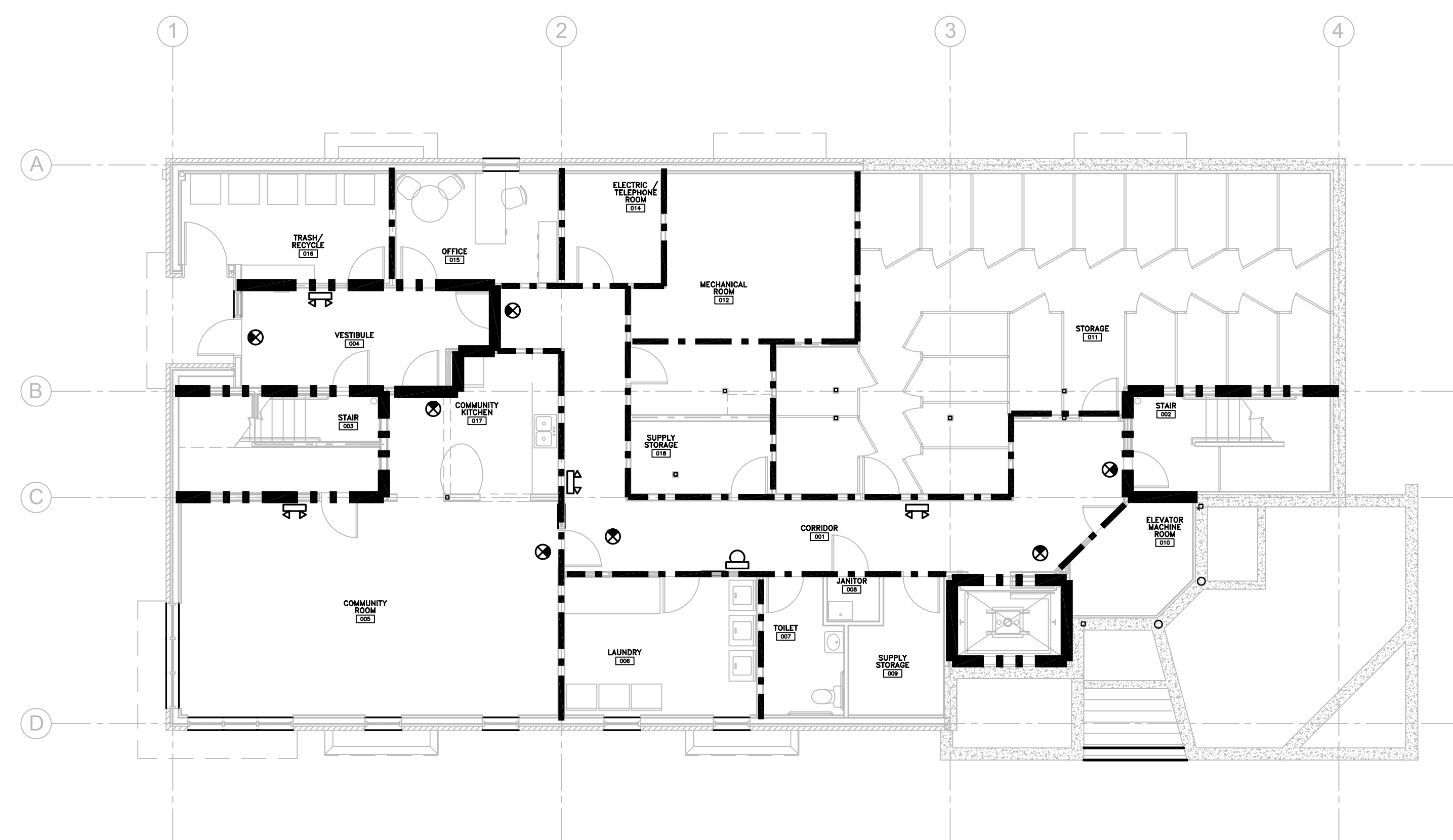
DRAWING SHOWS RATINGS OF FIRE SEPARATIONS WALLS ONLY FOR ALL RATED WALLS SEE WALL TYPES AND PLAN SHEETS



2 FIRST FLOOR LIFE SAFETY PLAN
 G1.2 1/8" = 1'-0"



3 SECOND FLOOR LIFE SAFETY PLAN
 G1.2 1/8" = 1'-0"



1 BASEMENT LIFE SAFETY PLAN
 G1.2 1/8" = 1'-0"

TFH ARCHITECTS
 100 COMMERCIAL STREET
 PORTLAND MAINE 04101
 TELEPHONE 207 775 6141
 ARCHITECTURE PLANNING

CONSULTANTS:
SOIL:
 Prideman and Greer Consulting Engineers
 350 US Route 1
 Falmouth, ME 04105
 207-781-5242
STRUCTURAL:
 Structural Design Consulting
 22 Oakmont Drive
 One Orchard Beach, ME 04094
 207-934-8038
MECHANICAL AND ELECTRICAL:
 Bennett Engineering
 7 Bennett Road
 Friesnop, ME 04032
 207-855-9475

REVISIONS:

DATE: 05/18/07
 PROJECT No. 514
 DRAWN BY: RJS
 CHECKED BY: TST
 SCALE: AS NOTED

SHEET TITLE:
 Basement
 First and Second
 Life Safety Plans