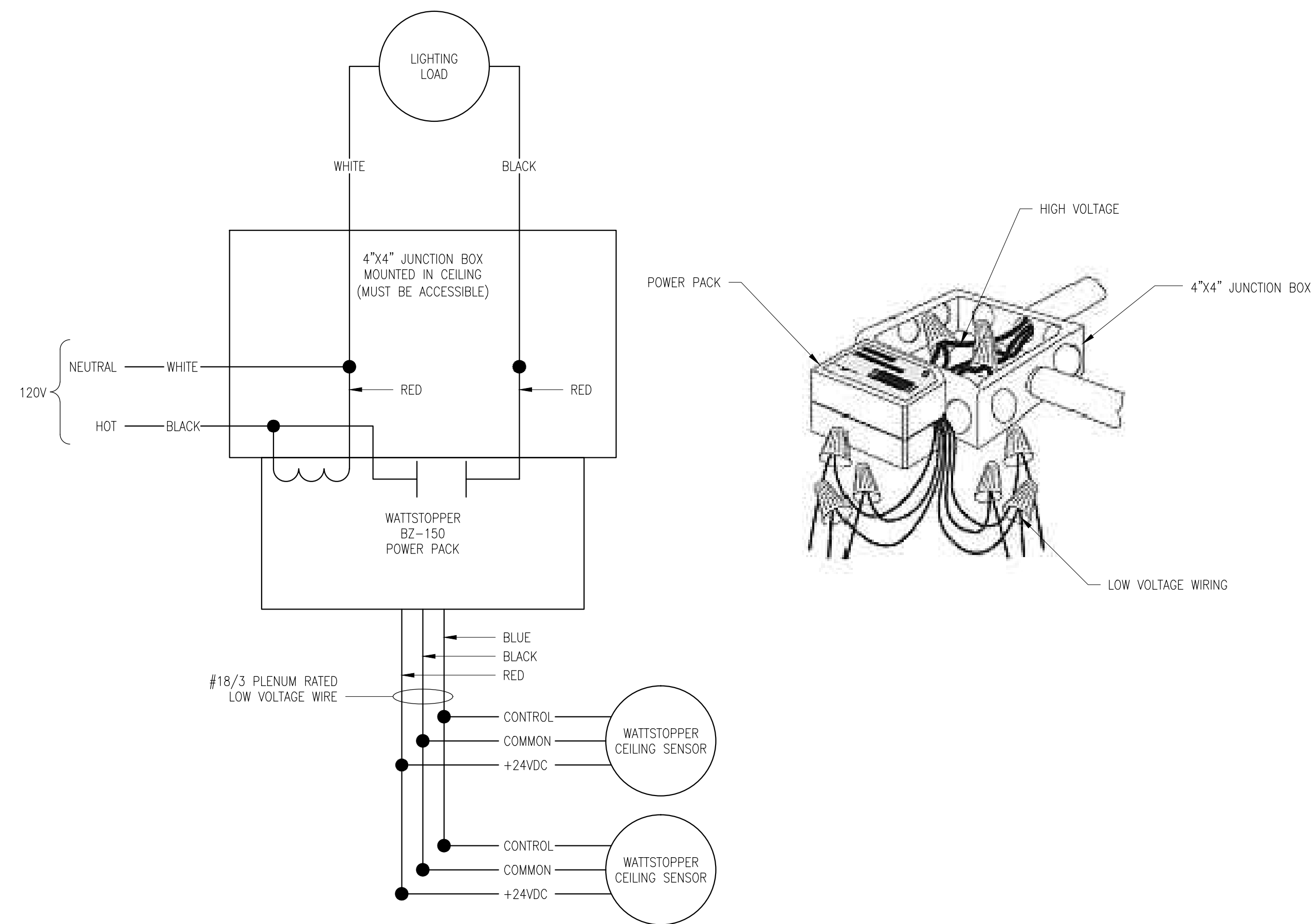
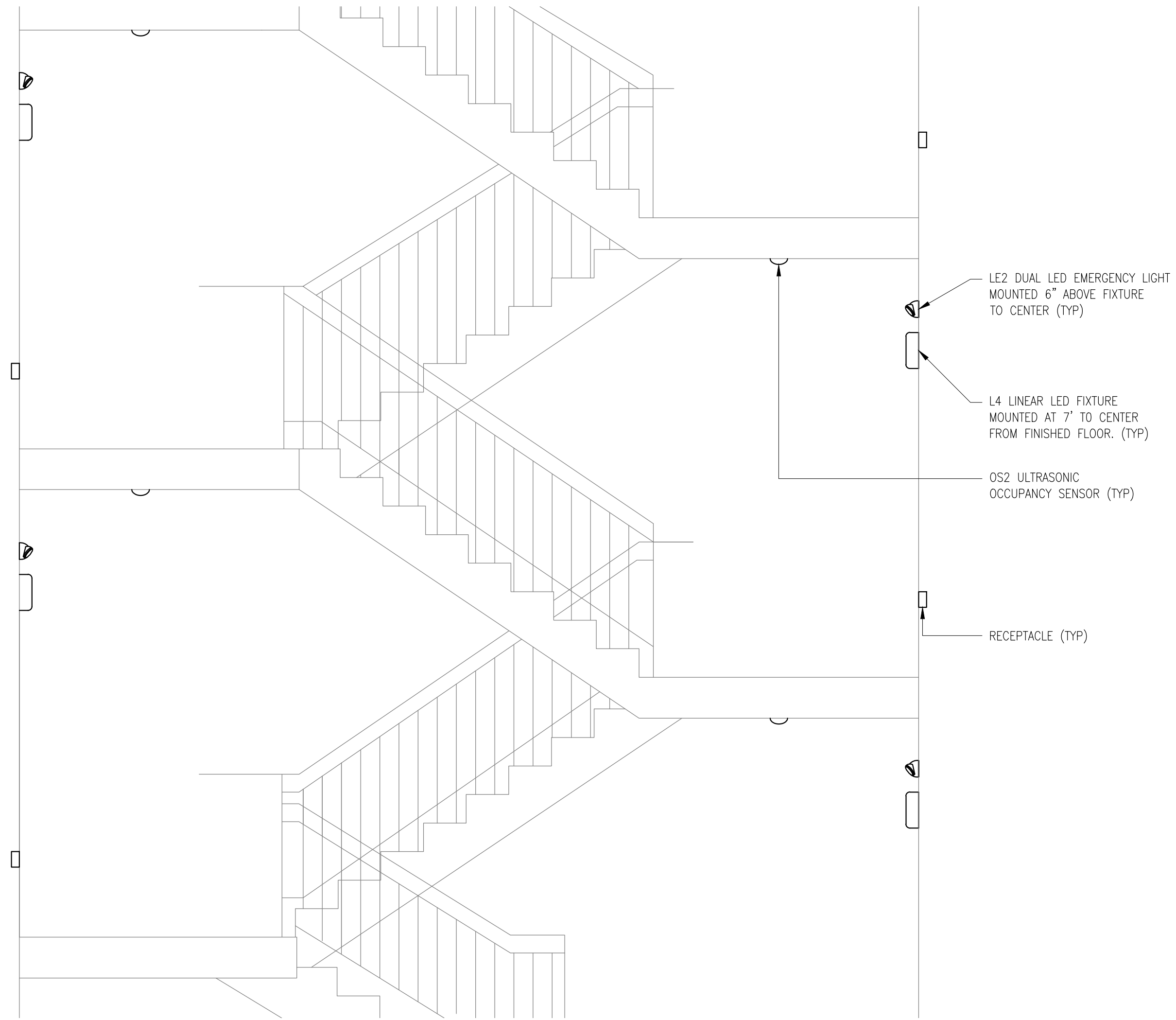


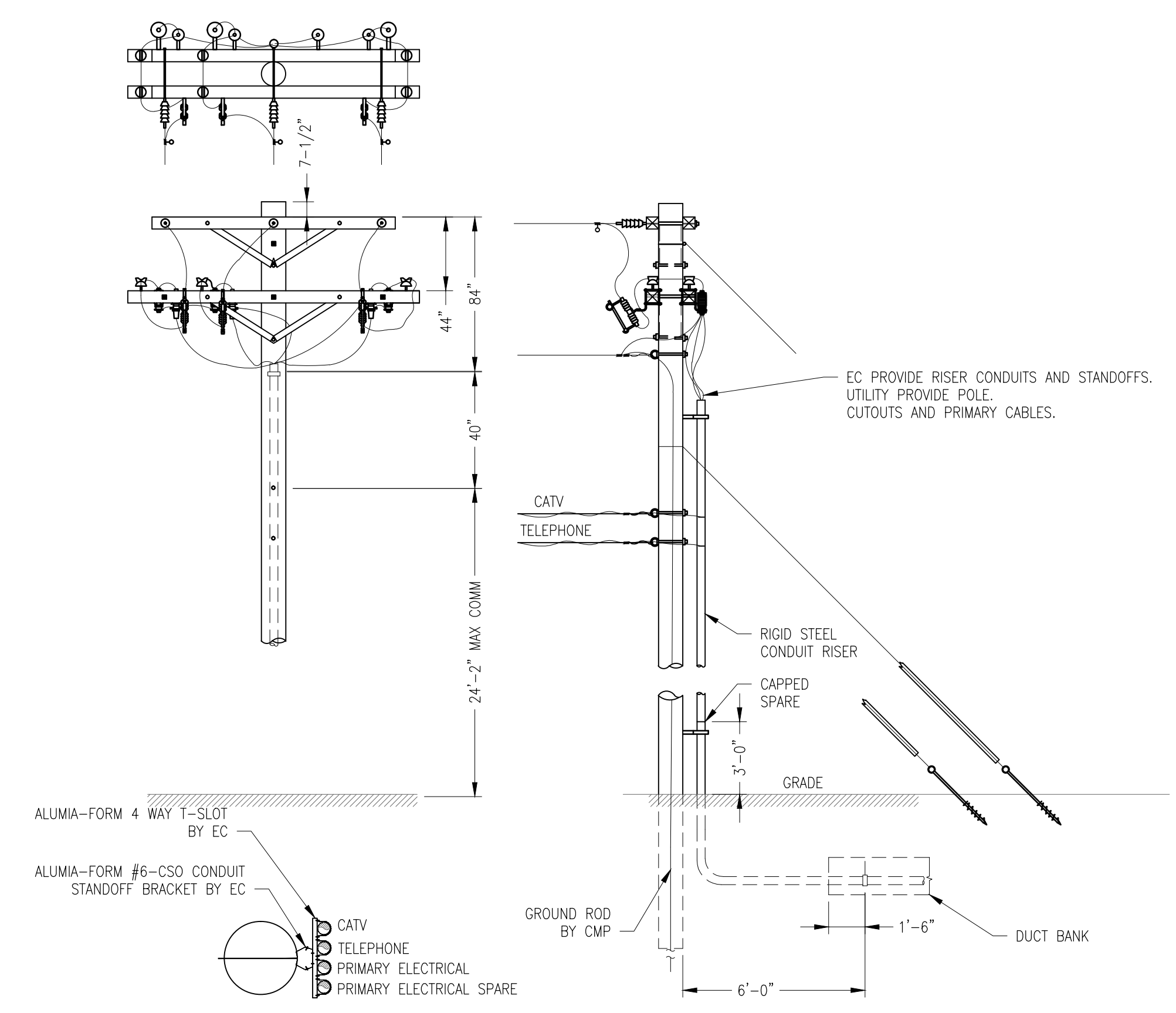
3 METER GROUP DETAIL  
E100 SCALE: NONE



1 OCCUPANCY SENSOR WIRING DETAIL  
E102 SCALE: NONE



4 STAIRWELL PARTIAL DETAIL  
E102 SCALE: NONE



2 RISER POLE DETAIL  
E500 SCALE: NONE

NOTE:  
ALL BENDS TO BE LONG SWEEP RIGID  
STEEL CONDUIT ELBOWS WHERE BEND  
RADIUS IS LESS THAN 15 FEET.

KAPLAN THOMPSON ARCHITECTS  
424 FORE ST.  
PORTLAND, ME 04101  
207-842-2888

PORTLAND HOUSING MAINE  
14 BAXTER BLVD  
PORTLAND, ME 04101  
P: 207.773.4753

AVESTA HOUSING  
307 CUMBERLAND AVE  
PORTLAND, ME 04101  
P: 207.553.7777

CARROLL ASSOCIATES LANDSCAPE ARCHITECTS  
217 COMMERCIAL STREET, STE 200  
PORTLAND, MAINE 04101  
207.772.1552 V. F. 207.772.0712

BECKER  
75 YORK ST.  
PORTLAND, ME 04101  
P: 207.879.1838

RANSOM Consulting Engineers and Scientists  
400 COMMERCIAL ST. SUITE 404  
PORTLAND, ME 04101  
P: 207.772.2891

APEX ENGINEERING  
190 US ROUTE ONE  
PMB 346 FALMOUTH, ME  
04105  
P: 207.847.3445

PRICING DOCUMENTS

Project: BAYSIDE ANCHOR  
PHDC & Avesta  
81 East Oxford Street  
Portland, ME

Drawing: ELECTRICAL DETAILS 1 OF 3  
Scale: AS NOTED  
Date: 9/1/15

Drawn by: ACY  
Revised:

E400

