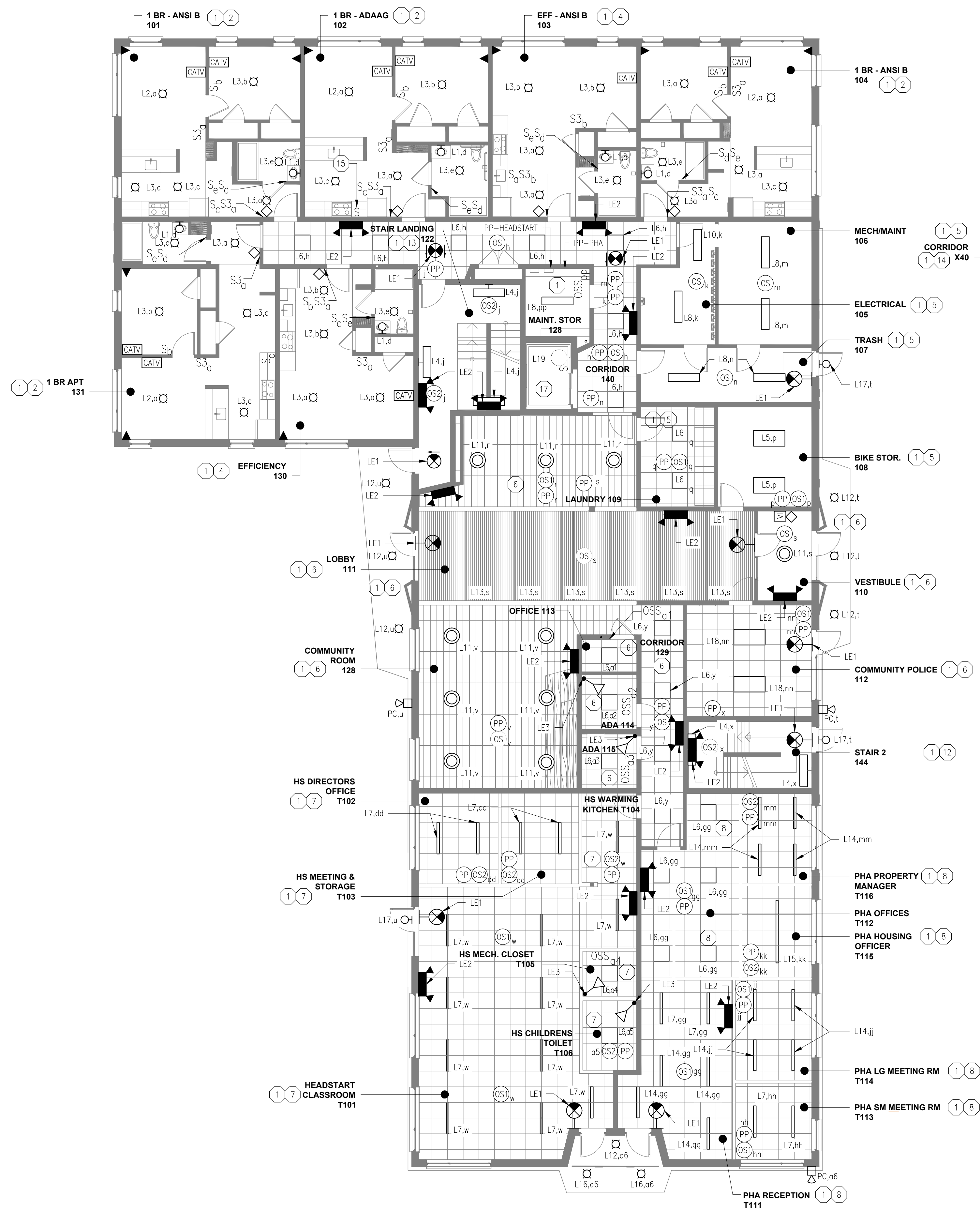


GENERAL NOTES

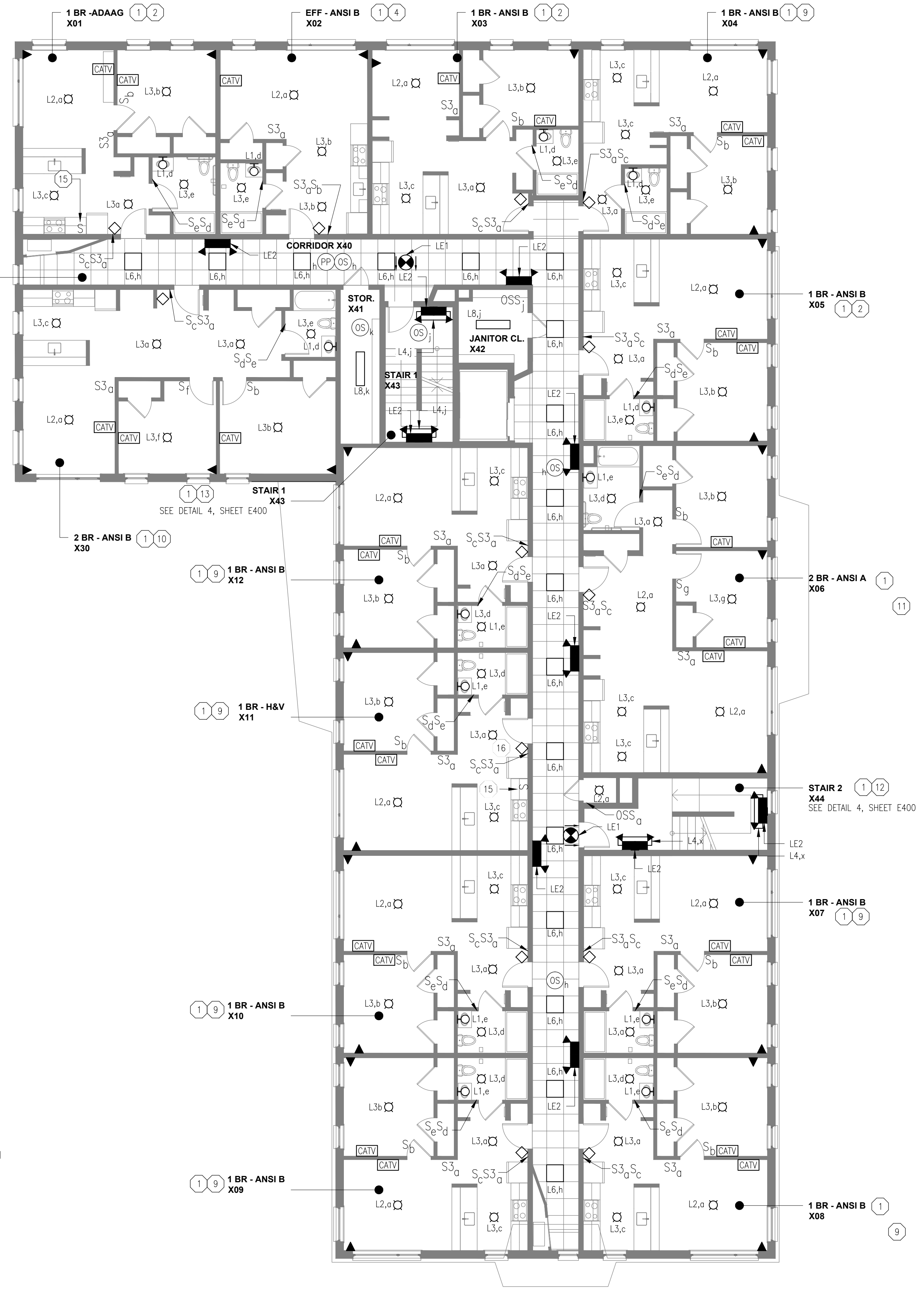
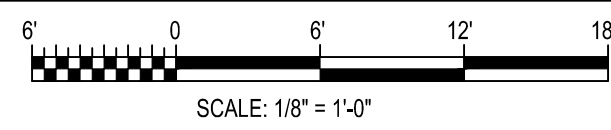
- 1. ALL CIRCUITING SHOWN IN APARTMENTS SHALL BE ROUTED TO THE PANEL LOCATED WITHIN THE APARTMENT.
- 2. ALL LIGHTING CIRCUITS SHALL BE WIRED USING 2#12, W/#12GND
- 3. REFER TO SHEET E603 FOR LIGHTING SCHEDULE.
- 4. ALL EMERGENCY LIGHTING SHALL BE TIED INTO THE LIGHTING CIRCUITS ASSOCIATED WITH THE FIXTURE LOCATIONS.

KEY NOTES

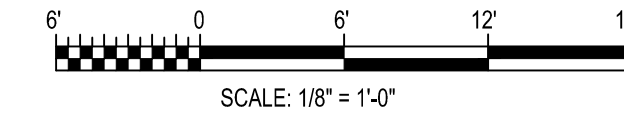
- 1. SEE SHEETS E600 & E601 FOR PANEL SCHEDULES.
- 2. APARTMENTS 101, 102, 104 & 131 LIGHTING SHALL BE CONNECTED TO CIRCUIT 10 OF PP-1BR
- 3. NOT USED.
- 4. APARTMENT LIGHTING SHALL BE CONNECTED TO CIRCUIT 8 OF PP-EFF.
- 5. CORRIDOR 132, BIKE STORE 108, LAUNDRY 109, TRASH 107, ELECTRICAL ROOM 106 & MECH. WORKROOM 105 LIGHTING SHALL BE CONNECTED TO CIRCUIT 2 OF PP-HOUSE.
- 6. COMMUNITY ROOM 126, COMMUNITY POLICE 112, LOBBY 111, VESTIBULE 110, ADA 115, ADA 114, OFFICE 113, STAIR LANDING 116 & EXTERIOR CANOPY LIGHTING SHALL TO BE CONNECTED TO CIRCUIT 4 OF PP-HOUSE.
- 7. DIRECTORS OFFICE 125, MEETING & STORAGE 124, ADA LAV. 123, HEAD START 122 & CHILDRENS TOILET SHALL BE CONNECTED TO CIRCUIT 6 OF PP-HEADSTART.
- 8. MEETING ROOMS 120, 121, PHA NEIGHBORHOOD SERVICE HUB 119, HOUSING OFFICER 118, PROPERTY MANAGER 117 & CORRIDOR LIGHTING SHALL BE CONNECTED TO CIRCUIT 1 OF PP-PHA.
- 9. APARTMENTS X01, X03, X04, X05, X06, X07, X09, X10, X11, X12 LIGHTING SHALL BE CONNECTED TO CIRCUIT 10 OF PP-1BR.
- 10. APARTMENT X30 LIGHTING SHALL BE CONNECTION TO CIRCUIT 8 OF PP-2BR.
- 11. APARTMENT X06 LIGHTING SHALL BE CONNECTED TO CIRCUIT 8 OF PP-A1A2BR.
- 12. STAIRWELL LIGHTING SHALL BE CONNECTED TO CIRCUIT 2 OF PP-HOUSE. SEE DETAIL 4, SHEET E400 FOR STAIRWELL LIGHTING AND CONTROLS DETAIL.
- 13. STAIRWELL LIGHTING SHALL BE CONNECTED TO CIRCUIT 16 OF PP-HVAC. SEE DETAIL 4, SHEET E400 FOR STAIRWELL LIGHTING & CONTROLS DETAIL.
- 14. SECOND FLOOR CORRIDOR 240 LIGHTING SHALL BE CONNECTED TO CIRCUIT 6 OF PP-HOUSE. THIRD FLOOR CORRIDOR 340 LIGHTING SHALL BE CONNECTED TO CIRCUIT 16 OF PP-HVAC. FOURTH FLOOR CORRIDOR 440 LIGHTING SHALL BE CONNECTED TO CIRCUIT 18 OF PP-HVAC.
- 15. FOR OPERATION OF FAN/LIGHT ON RANGE HOOD
- 16. PROVIDE VISUAL INTERCOM MONITOR 6" ABOVE APARTMENT INTERCOM STATION.
- 17. SEE DRAWING E100 KEYNOTE 1 FOR TYPICAL WIRING INFORMATION FOR OCCUPANCY SENSORS.



FIRST FLOOR LIGHTING PLAN



SECOND-FOURTH FLOOR LIGHTING PLAN



KAPLAN THOMPSON ARCHITECTS
424 FORE ST.
PORTLAND, ME 04101
207-842-2888

PORTLAND HOUSING MAINE
14 BAXTER BLVD
PORTLAND, ME 04101
P: 207.773.4753

AVESTA HOUSING
307 CUMBERLAND AVE
PORTLAND, ME 04101
P: 207.553.7777

CARROLL ASSOCIATES LANDSCAPE ARCHITECTS
217 COMMERCIAL STREET, STE 200
PORTLAND, MAINE 04101
207.772.1552 V. F. 207.772.0112

BECKER
75 YORK ST.
PORTLAND, ME 04101
P: 207.879.1838

RANSOM Consulting Engineers and Scientists
400 COMMERCIAL ST.
SUITE 404
PORTLAND, ME 04101
P: 207.772.2891

APEX ENGINEERING
190 US ROUTE ONE
PMB 346 FALMOUTH, ME
04105
P: 207.847.3445

PRICING DOCUMENTS

Project: BAYSIDE ANCHOR
PHDC & Avesta
81 East Oxford Street
Portland, ME

Drawing: ELECTRICAL - LIGHTING & TELECOMMUNICATION PLANS
Scale: 1/8" = 1'-0"
Date: 9/1/15
Drawn by: ACY
Revised:

