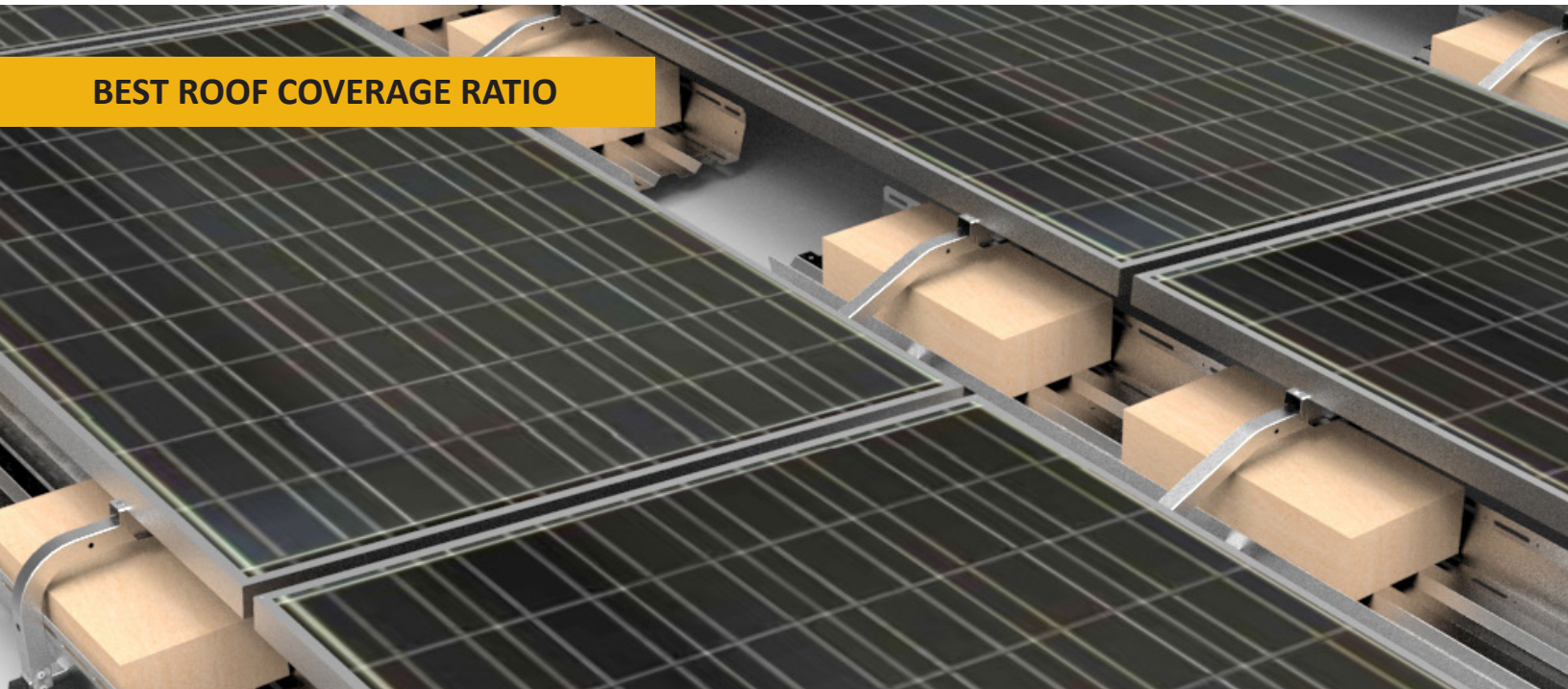


# Polar Bear III HD

## 5 Degree Flat Roof Mounting System

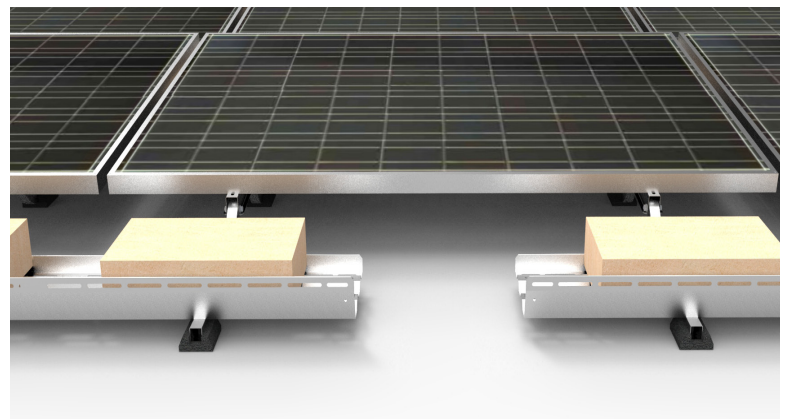
**BEST ROOF COVERAGE RATIO**



### A racking design that helps you maximize power density

Polar Bear® III HD 5D offers two row-spacing options to optimize designs and maximize power density. Polar Bear III HD draws on seven years of industry experience. It provides more design flexibility, improved constructability, universal framed module support, enhanced roof protection, better wire management, and a lower cost than Polar Bear III or any other reliable flat roof mounting solution in the market today. Combined with PanelClaw's support team of flat roof experts, Polar Bear III HD is the obvious choice for your commercial flat roof projects.

With over 6,000 flat roof projects completed around the world including more than 2,000 jurisdictions in 44 states in the US, we are your flat roof partners. Experience the PanelClaw® Advantage on your next flat roof project.

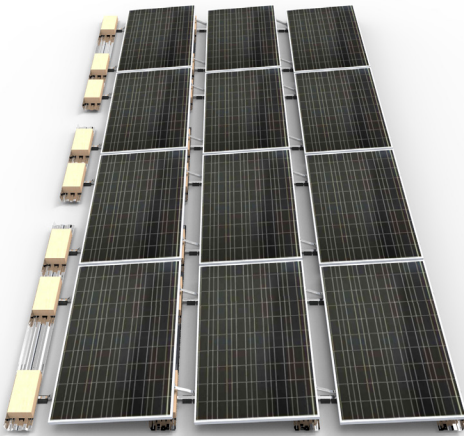


# Polar Bear III HD

## 5 Degree Flat Roof Mounting System

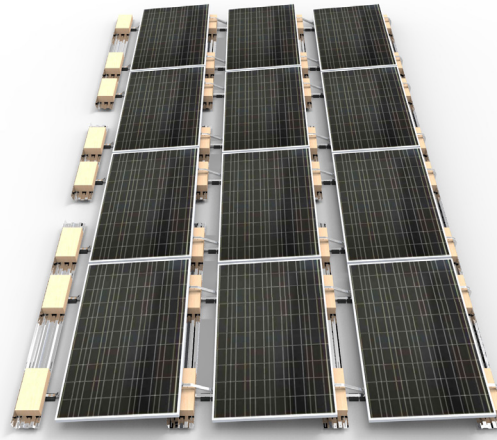


### BEST ROOF COVERAGE RATIO



46"

#### Module to Module Spacing



49"

#### Module to Module Spacing

### Best Power Density

Polar Bear® III 5D offers the best roof coverage ratio on the market. The tight-row spacing option allows for maximum roof capacity while the single module tilt up and walkway path facilitate system maintenance.

### Trusted Roof Integrity

Polar Bear® III HD protects the roof with fully captured ballast, integrated recycled rubber roof protection pads and a system design that allows for free water flow.

### Safety and Reliability

PanelClaw's industry-leading reliability track record in the flat roof space is the result of our investment in an extensive test program that goes beyond existing codes and standards. We maintain long term partnerships with third party test laboratories and codes and standards bodies throughout the industry.

### Three Components

#### Support

- Easy-to-handle components that weigh less than 2.5 pounds
- Integrated recycled rubber roof protection pads
- Pre-drilled holes for wire management cabling options

#### Ballast Tray

- Locking end-tab to fully capture ballast blocks
- Adjustable mounting location to fit all major module brands
- Nested design to provide high packaging density

#### Claw

- Attachment to module using standard module mounting holes
- UL 2703 certified for electrical bonding and grounding
- Two energy density mounting options
- Pre-drilled for E/W module-to-module wire management

#### Applications

Flat roof (max slope 5°)

Fully ballasted or mechanically attached

#### Module Tilt Angle

5° nominal

#### North/South Module to Module Repeat

46" or 49"

#### Platform Load

~2.4 psf to 10.0 psf

#### Module Orientation

Landscape

#### Module Attachment

Standard module mounting holes

#### Basic Wind Speed

Up to 150 mph  
(>150 mph by approval)

#### Wind Exposure Category

B and C (D by approval)

#### Seismic Compatibility

C, D, E and F

#### Material

G90 steel with stainless steel fasteners

#### Warranty

25 year warranty

#### Listings and Certifications

ANSI/UL 2703-2015 listed  
UL 2703 System Fire Rating: Class A with Type 1 and Type 2 modules

(978) 688.4900 | sales@panelclaw.com

© 2016 PanelClaw, Inc.