

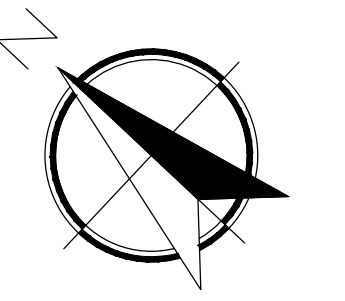
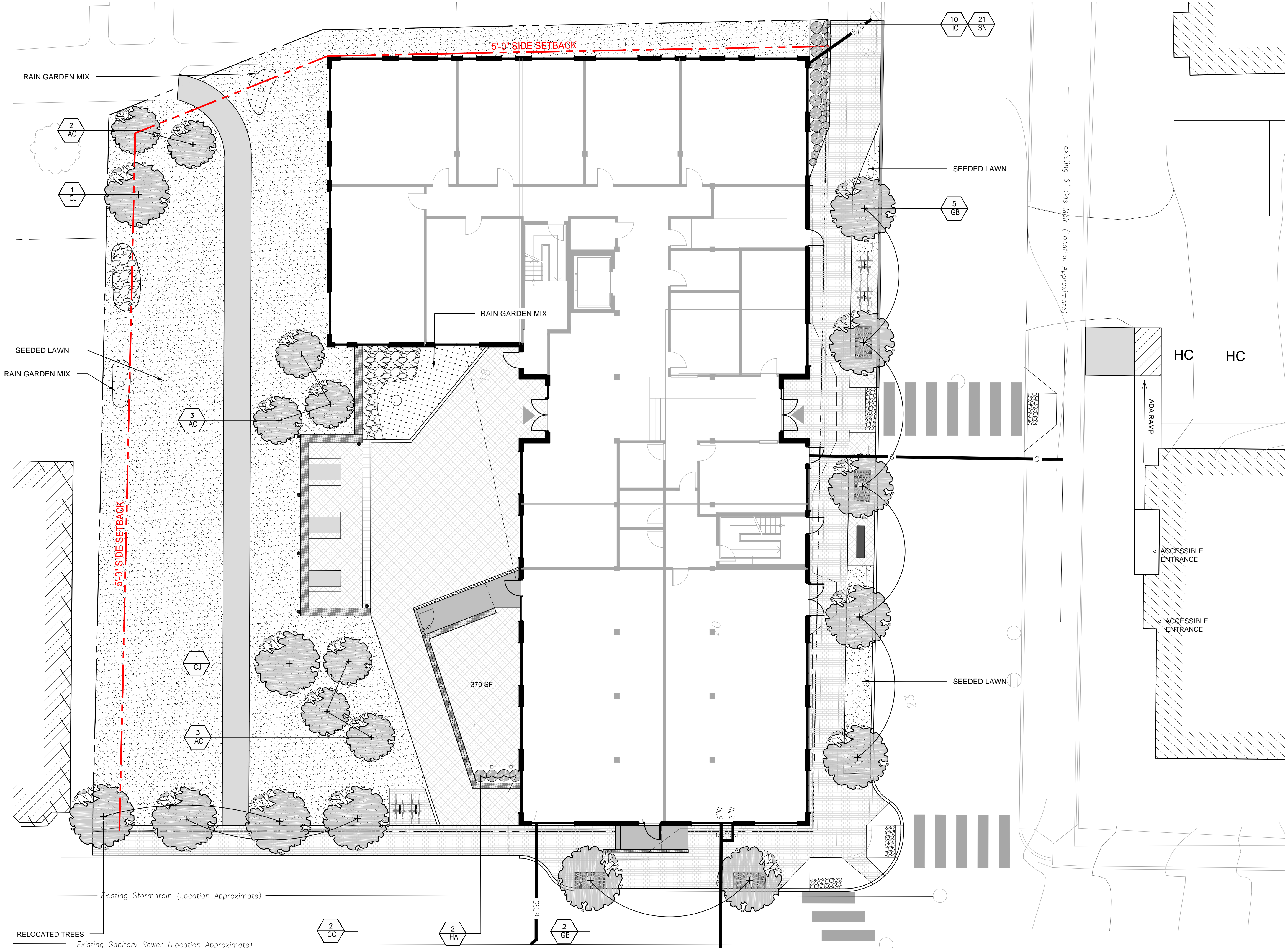
LOCUS N.T.S.

LEGEND

- (EXISTING)
- IRON PIPE OR ROD FOUND
 - MONUMENT FOUND
 - ⊗ WATER VALVE
 - ⊕ HYDRANT
 - UTILITY POLE
 - MANHOLE
 - MANHOLE
 - SIGN
 - DECIDUOUS TREE
 - X — FENCE
 - CURB
 - OHW — OVERHEAD WIRES
 - EXISTING CONTOURS
- (PROPOSED)
- LIMIT OF WORK (XX LXX)
 - 20' PROPOSED CONTOURS (XX LXX)
 - EDGE OF PAVING (XX LXX)
 - 7" VERTICAL GRANITE CURB (XX LXX)
 - 6" VERTICAL GRANITE CURB (XX LXX)
 - FLUSH / TRANSITION GRANITE CURB (XX LXX)
 - ☀ TREE GRATE (XX LXX)
 - TREE (XX LXX)
 - SHRUB (XX LXX)
 - LAWN (XX LXX)
 - RAIN GARDEN (XX LXX)
 - BIT. CONC. PAVING (XX LXX)
 - BRICK PAVING (XX LXX)
 - SPECIAL PAVING (XX LXX)
 - WALL (XX LXX)
 - BENCH (XX LXX)
 - BIKE RACK (XX LXX)
 - CATCH BASIN (XX LXX)

| PLANT LIST - TREES & SHRUBS | | | | | |
|-----------------------------|------|--|--------------------|----------------|---------------------|
| QUANTITY | SYB. | BOTANICAL NAME | COMMON NAME | SIZE | REMARKS |
| 8 | AC | <i>amelanchier x grandiflora</i> 'Autumn Brilliance' | Serviceberry | 6'-7' HT. | MULTI STEMMED CLUMP |
| 2 | CC | <i>cercis canadensis</i> 'Appalachian Red' | Eastern Redbud | 2"-2 1/2" CAL. | B&B |
| 2 | CJ | <i>cercidiphyllum japonicum</i> | Katsuratree | 3"-3 1/2" CAL. | B&B |
| 7 | GB | <i>ginkgo biloba</i> | Ginkgo | 3"-3 1/2" CAL. | B&B |
| 4 | HA | <i>hydrangea anomala</i> subsp. <i>petiolaris</i> | Climbing Hydrangea | #7 | CONT |
| 10 | IC | <i>ilex crenata</i> 'Green Lustre' | Japanese Holly | #5 | CONT |
| 21 | SN | <i>salvia nemorosa</i> 'Sensation Deep Blue' | Ornamental Sage | #1 | CONT |

| PLANT LIST - RAIN GARDEN MIX | | | | | | | | |
|------------------------------|------|--------------------------------|---------------------|-----|-------|-------|-----|------|
| QUANTITY | SYB. | BOTANICAL NAME | COMMON NAME | Wet | Moist | Mesic | Dry | Size |
| | | <i>andropogon scoparius</i> | Little Bluestem | | | X | X | |
| | | <i>deschampsia cespitosa</i> | Tufted Hair Grass | | X | X | | |
| | | <i>cornus sericea</i> 'farrow' | Arctic Fire Dogwood | X | X | X | | |
| | | <i>vaccinium corybosum</i> | Highbush Blueberry | | X | X | | |
| | | <i>iris versicolor</i> | Blue Flag Iris | X | X | | | |
| | | <i>aster novae-angliae</i> | New England Aster | | X | X | X | |
| | | <i>eupatorium fistulosum</i> | Joe Pye Weed | | X | X | | |
| | | <i>rudbeckia fulgida</i> | black-eyed susan | | X | X | | |
| | | <i>echinacea purpurea</i> | Purple Coneflower | | X | X | | |



KAPLAN THOMPSON ARCHITECTS
424 fore st., portland, me 04101
207-842-2888 fax: 842-2828

CARROLL ASSOCIATES LANDSCAPE ARCHITECTS
217 COMMERCIAL STREET, STE 200
PORTLAND, MAINE 04101
207.772.1582 V. F. 207.772.0712

BECKER STRUCTURAL ENGINEERS
75 YORK ST.
PORTLAND, ME 04101
P: 207.879.1838
F: 207.879.1822

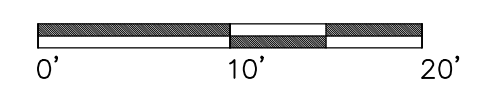
RANSOM Consulting Engineers and Scientists
400 COMMERCIAL ST.
SUITE 404
PORTLAND, ME 04101
P: 207.772.2891
F: 207.772.3248

PORTLAND HOUSING MAINE DEVELOPMENT CORPORATION
14 BAXTER BLVD
PORTLAND, ME 04101
P: 207.773.4753
F: 207.774.6471

SITE PLAN APPLICATION

Project: BAYSIDE ANCHOR
Portland Housing Development Corporation
81 East Oxford Street
Portland, ME

Drawing: **SITE LANDSCAPE PLAN**
Scale: 1/4" = 10'
Date: Monday, May 12, 2014
Drawn by: EPK
Revised:



L3.0