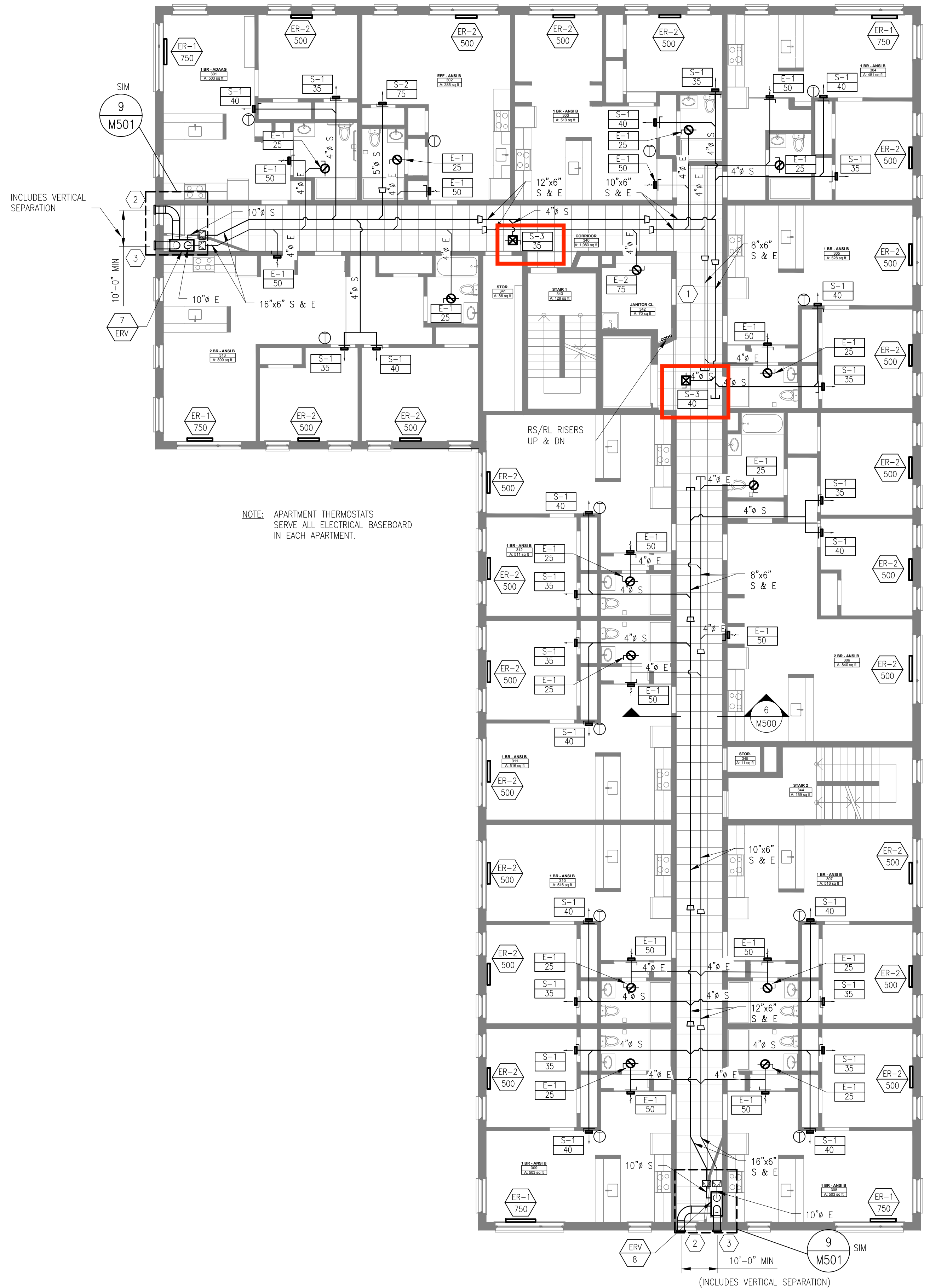
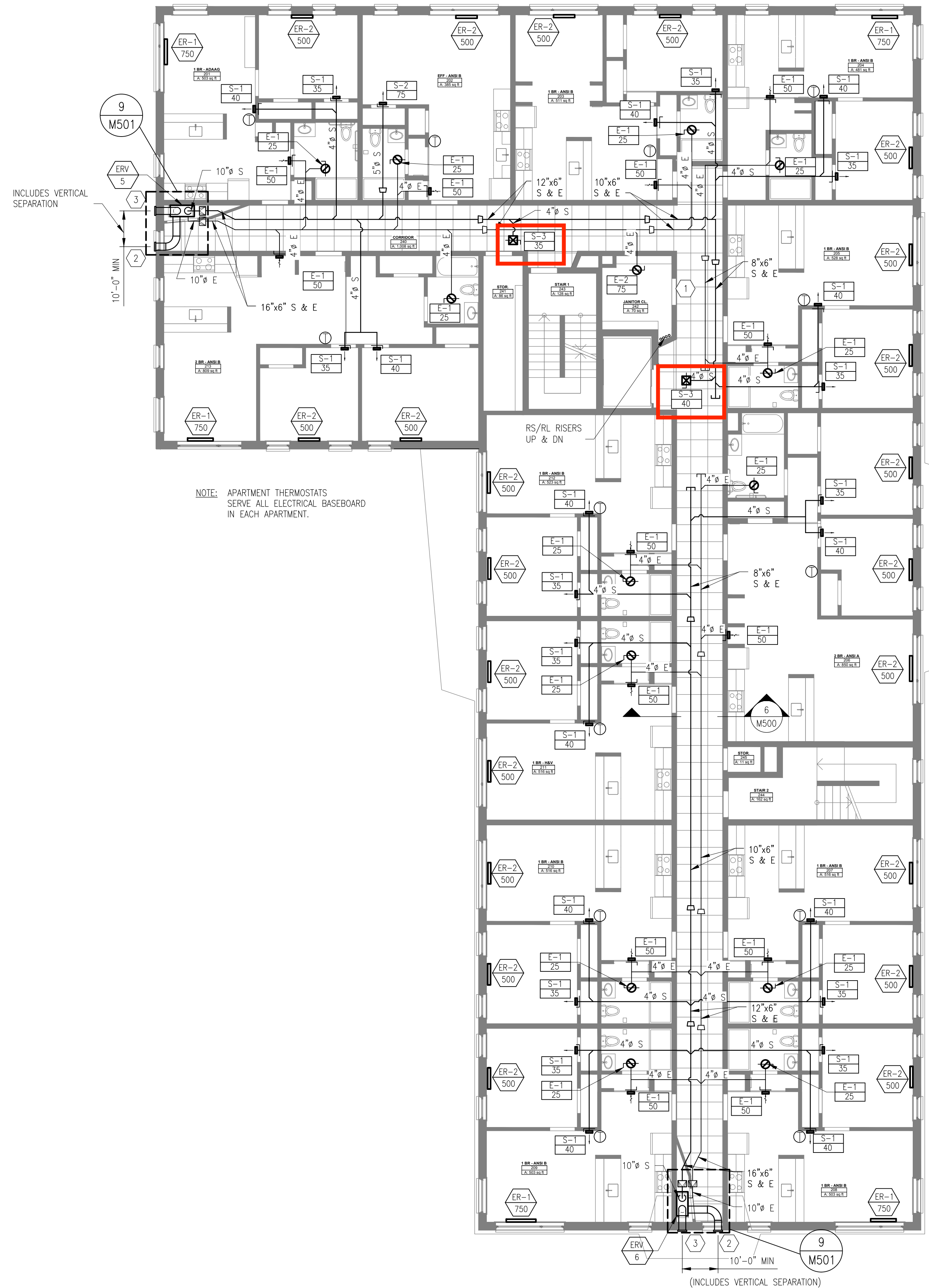


GENERAL NOTES

- SEE M001 FOR MECHANICAL GENERAL NOTES.
- PROVIDE MINIMUM 10'-0" CLEARANCE BETWEEN ERV OUTDOOR AIR INTAKE AND ANY EXHAUST OUTLET PER CODE.
- HEAT WILL BE PROVIDED BY ELECTRIC RESISTANCE BASEBOARD HEATERS ALONG EXTERIOR WALLS IN THE LIVING UNITS.
- VENTILATION AIR WILL BE PROVIDED BY CENTRALIZED ENERGY RECOVERY VENTILATORS (ERV) THAT ARE DUCTED TO MULTIPLE ROOMS PER ERV SYSTEM.
- INSULATE ALL INTAKE AIR AND EXHAUST DUCTWORK.
- SUPPLY AND RETURN MAINS LOCATED IN CORRIDORS TO BE STACKED. MAINS ARE SHOWN PARALLEL IN PLAN FOR CLARITY.

KEY NOTES

- PROVIDE DOOR UNDERCUT.
- ENERGY RECOVERY VENTILATOR INTAKE WEATHER HOOD WITH BIRD SCREEN.
- ENERGY RECOVERY VENTILATOR EXHAUST WEATHER HOOD WITH BIRD SCREEN.



PRICING DOCUMENTS

