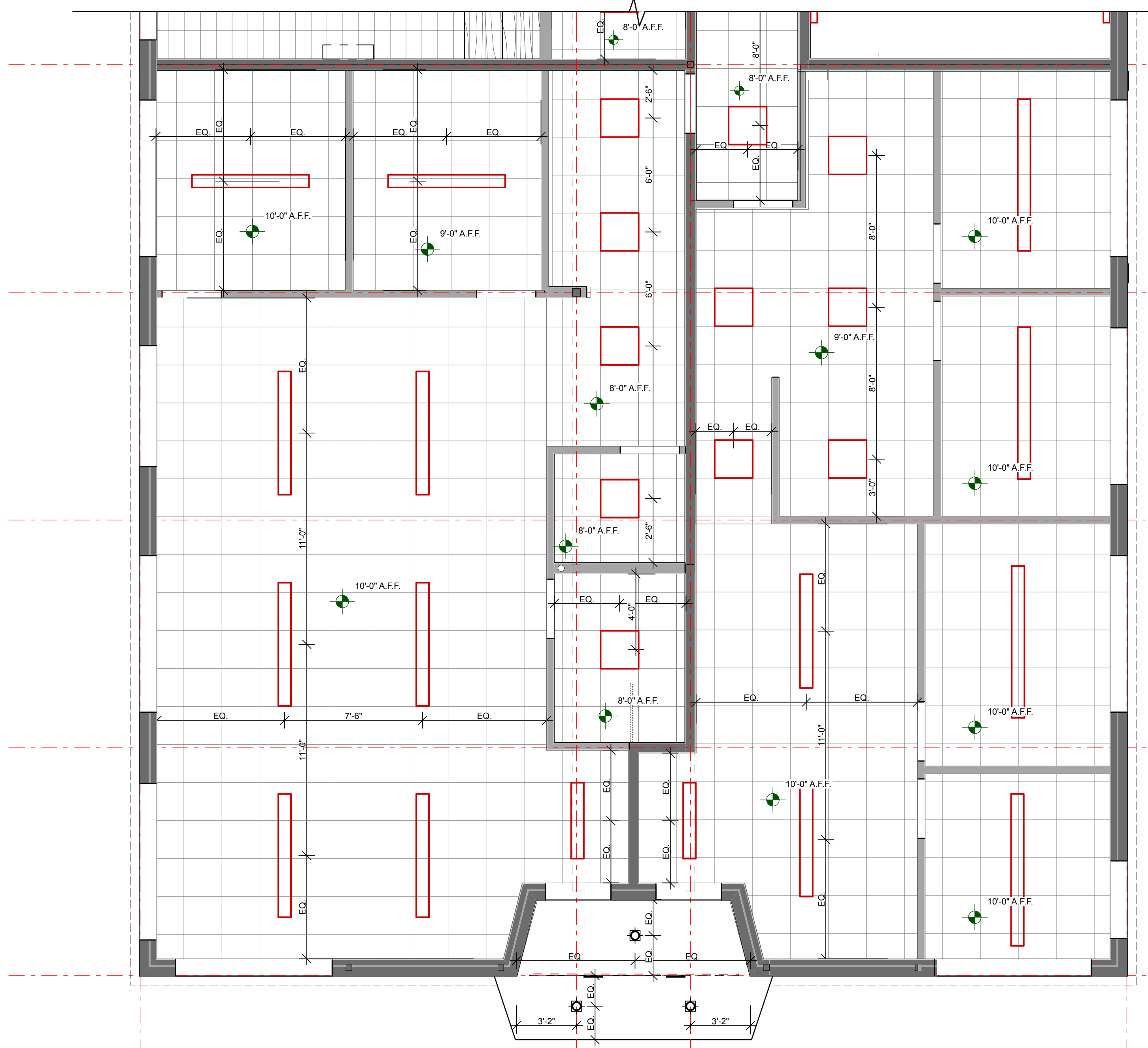


ROOM #	ROOM NAME	HEIGHT	FLOOR FINISH	WALL FINISH	CEILING FINISH	BASE TRIM	NOTES
T101	HEAD START CLASSROOM	10'-0"	POLISHED CONC. STAINED	GWB, PTD.	APC-1	RUBBER BASE COVE MOLDING	
T102	HS DIRECTOR'S OFFICE	10'-0"	POLISHED CONC. STAINED	GWB, PTD.	APC-1	RUBBER BASE COVE MOLDING	
T103	HS MEETING & STORAGE	9'-0"	POLISHED CONC. STAINED	GWB, PTD.	APC-1	RUBBER BASE COVE MOLDING	
T104	HS WARMING KITCHEN	8'-0"	POLISHED CONC. STAINED	GWB, PTD.	APC-1	RUBBER BASE COVE MOLDING	
T105	HS MECH. CLOSET	8'-0"	POLISHED CONC. STAINED	GWB, PTD.	APC-1	RUBBER BASE COVE MOLDING	
T106	HS CHILDREN'S TOILET	8'-0"	POLISHED CONC. STAINED	GWB, PTD. / TILE	APC-1	TILE	
T111	PHA RECEPTION	10'-0"	POLISHED CONC. STAINED	GWB, PTD.	APC-1	RUBBER BASE COVE MOLDING	
T112	PHA OFFICES	9'-0"	POLISHED CONC. STAINED	GWB, PTD.	APC-1	RUBBER BASE COVE MOLDING	
T113	PHA SM MEETING RM	10'-0"	POLISHED CONC. STAINED	GWB, PTD.	APC-1	RUBBER BASE COVE MOLDING	
T114	PHA LG MEETING RM	10'-0"	POLISHED CONC. STAINED	GWB, PTD.	APC-1	RUBBER BASE COVE MOLDING	
T115	PHA HOUSING OFFICER	10'-0"	POLISHED CONC. STAINED	GWB, PTD.	APC-1	RUBBER BASE COVE MOLDING	
T116	PHA PROPERTY MANAGER	10'-0"	POLISHED CONC. STAINED	GWB, PTD.	APC-1	RUBBER BASE COVE MOLDING	

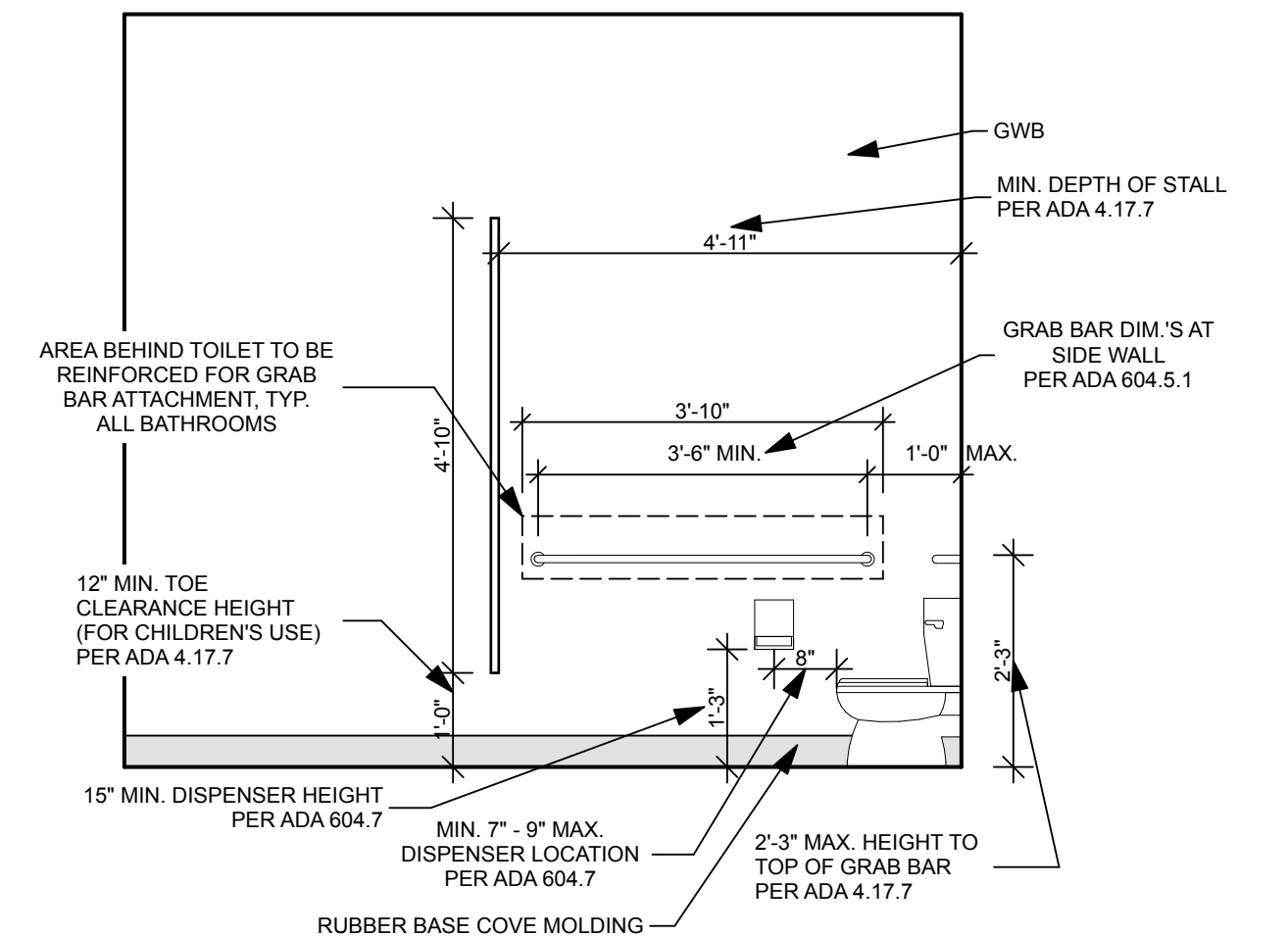
**NOTE: ALL FIXTURES TO BE CENTERED BOTH WAYS IN ROOM, TYP. UNLESS NOTED OTHERWISE**

MARK	SIZE			Quantity	MATL	GLZ	FRAME				FIRE RATING	HARDWARE		NOTES	FOB ACCESS
	W	HT	THK				MATL	EL	DETAIL			SET NO	KEYSIDE RM NO		
									HEAD	JAMB					
T11	3'-0"	6'-8"	0'-1 3/8"	1	MDF	NONE	STEEL	22	TYPE 6	TYPE 6	N/A	HW 21	KEY	UNDERCUT	NO
T12	3'-0"	6'-8"	0'-1 3/8"	1	MDF	NONE	STEEL	22	TYPE 6	TYPE 6	N/A	HW 22	KEY		NO
T13	3'-0"	6'-8"	0'-1 3/8"	1	MDF	TYPE B	STEEL	23	TYPE 6	TYPE 6	N/A	HW 19	KEY		NO
T14	3'-0"	6'-8"	0'-1 3/8"	1	MDF	TYPE B	STEEL	23	TYPE 6	TYPE 6	N/A	HW 19	KEY		NO
T21	3'-0"	6'-8"	0'-1 3/8"	1	MDF	TYPE B	STEEL	23	TYPE 6	TYPE 6	N/A	HW 20			NO
T22	3'-0"	6'-8"	0'-1 3/8"	1	MDF	TYPE B	STEEL	23	TYPE 6	TYPE 6	N/A	HW 20			NO
T23	3'-0"	6'-8"	0'-1 3/8"	1	MDF	TYPE B	STEEL	23	TYPE 6	TYPE 6	N/A	HW 19	KEY		NO
T24	3'-0"	6'-8"	0'-1 3/8"	1	MDF	TYPE B	STEEL	23	TYPE 6	TYPE 6	N/A	HW 19	KEY		NO

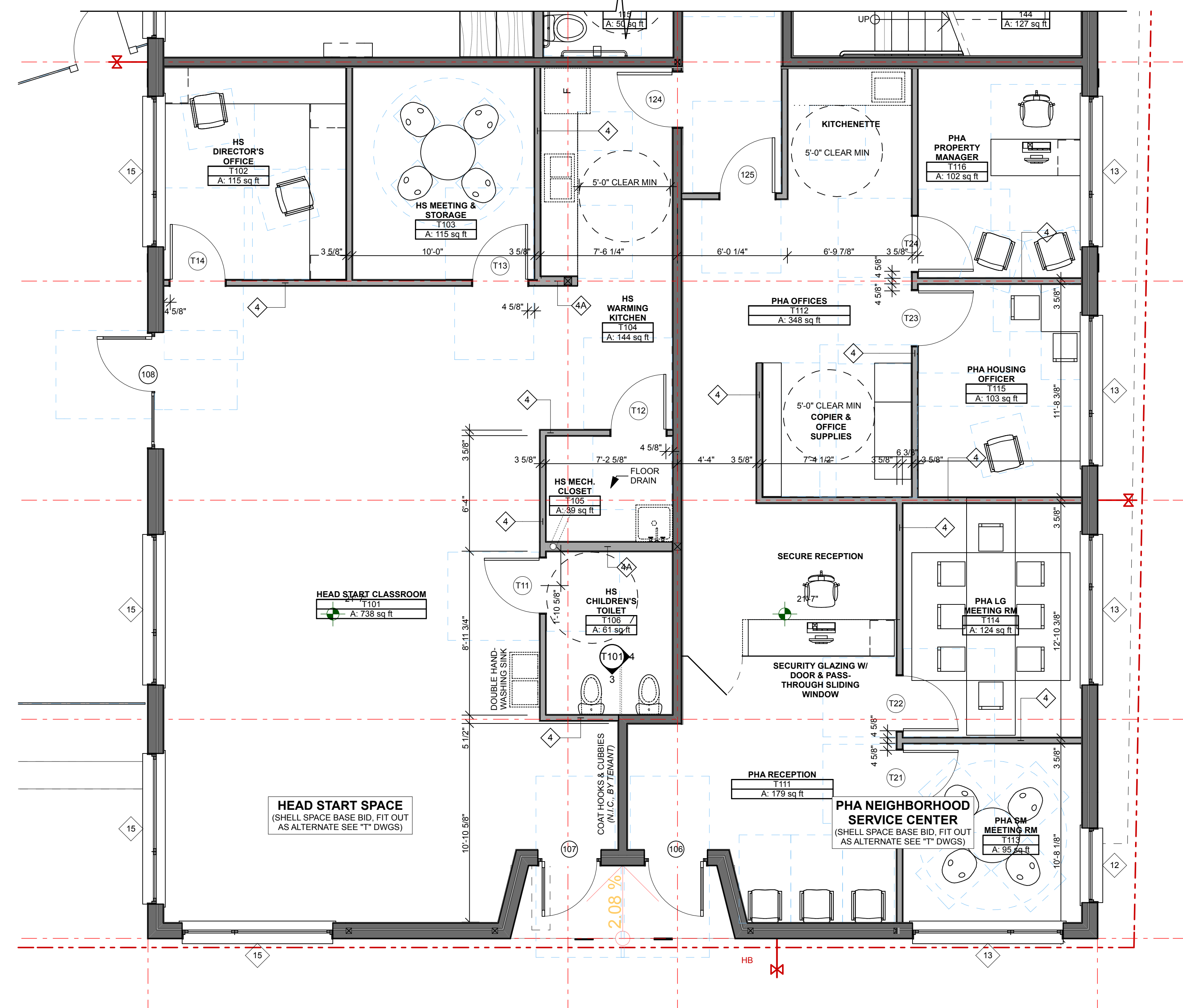
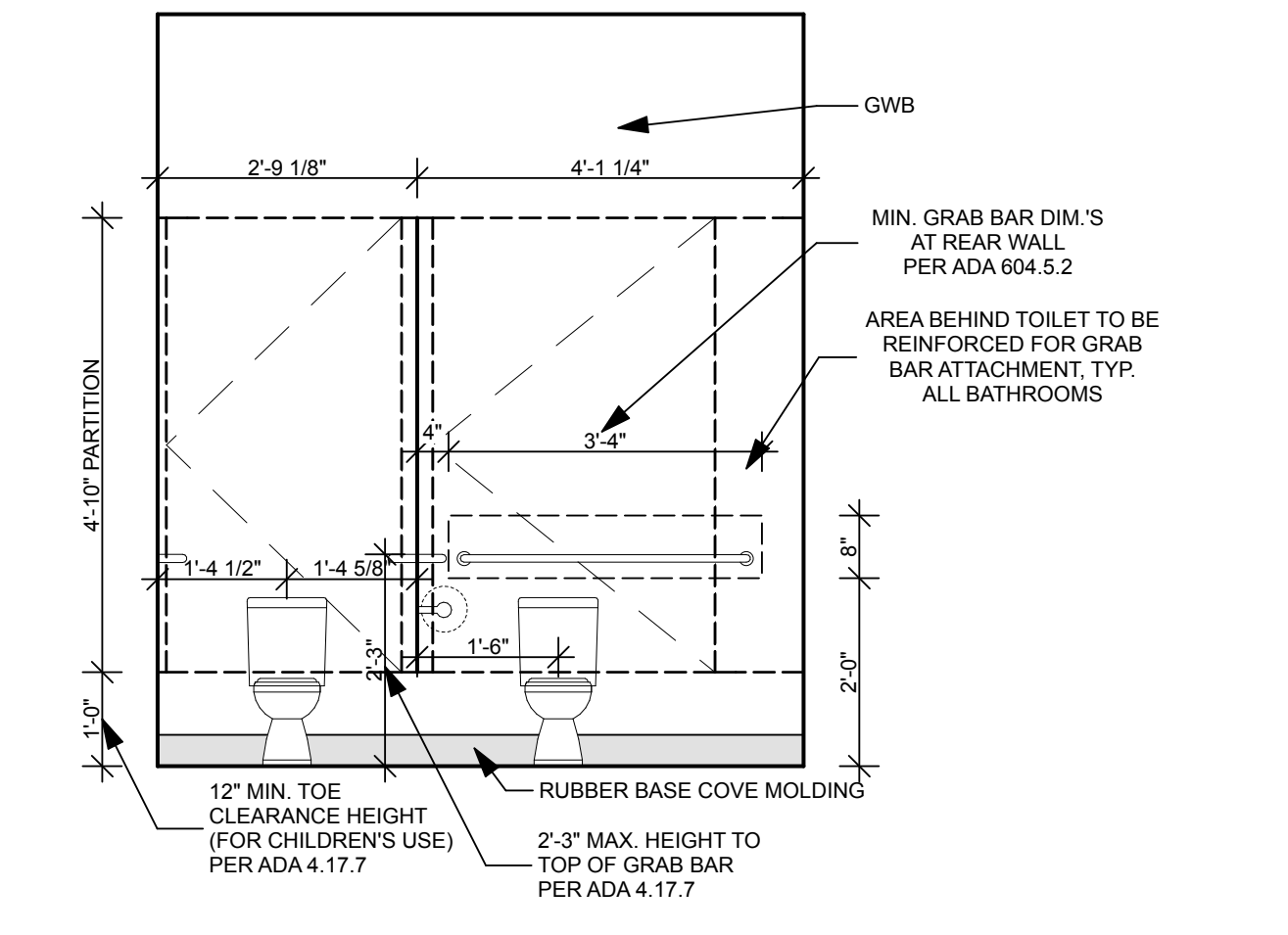


**2 1st FLOOR: TENANT FIT-OUT RCP**  
SCALE: 1/4" = 1'-0"

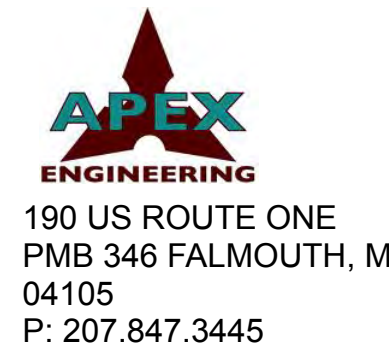
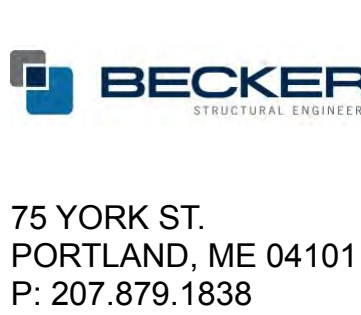
**4 CHILDRENS ADA BATHROOM**  
SCALE: 1/2" = 1'-0"



**3 CHILDRENS ADA BATHROOM**  
SCALE: 1/2" = 1'-0"



**1 1st FLOOR: TENANT FIT-OUT**  
SCALE: 1/4" = 1'-0"



**PRICING DOCUMENTS**

**ALTERNATE: TENANT FIT OUT**

PROJECT:  
BAYSIDE ANCHOR  
PHDC & Avesta Housing  
81 East Oxford Street  
Portland, ME

DRAWING: 1ST FLOOR TENANT FIT OUT  
SCALE: 1/4" = 1'-0"  
DATE: 9/3/15  
DRAWN BY: JJT  
REVISED:

