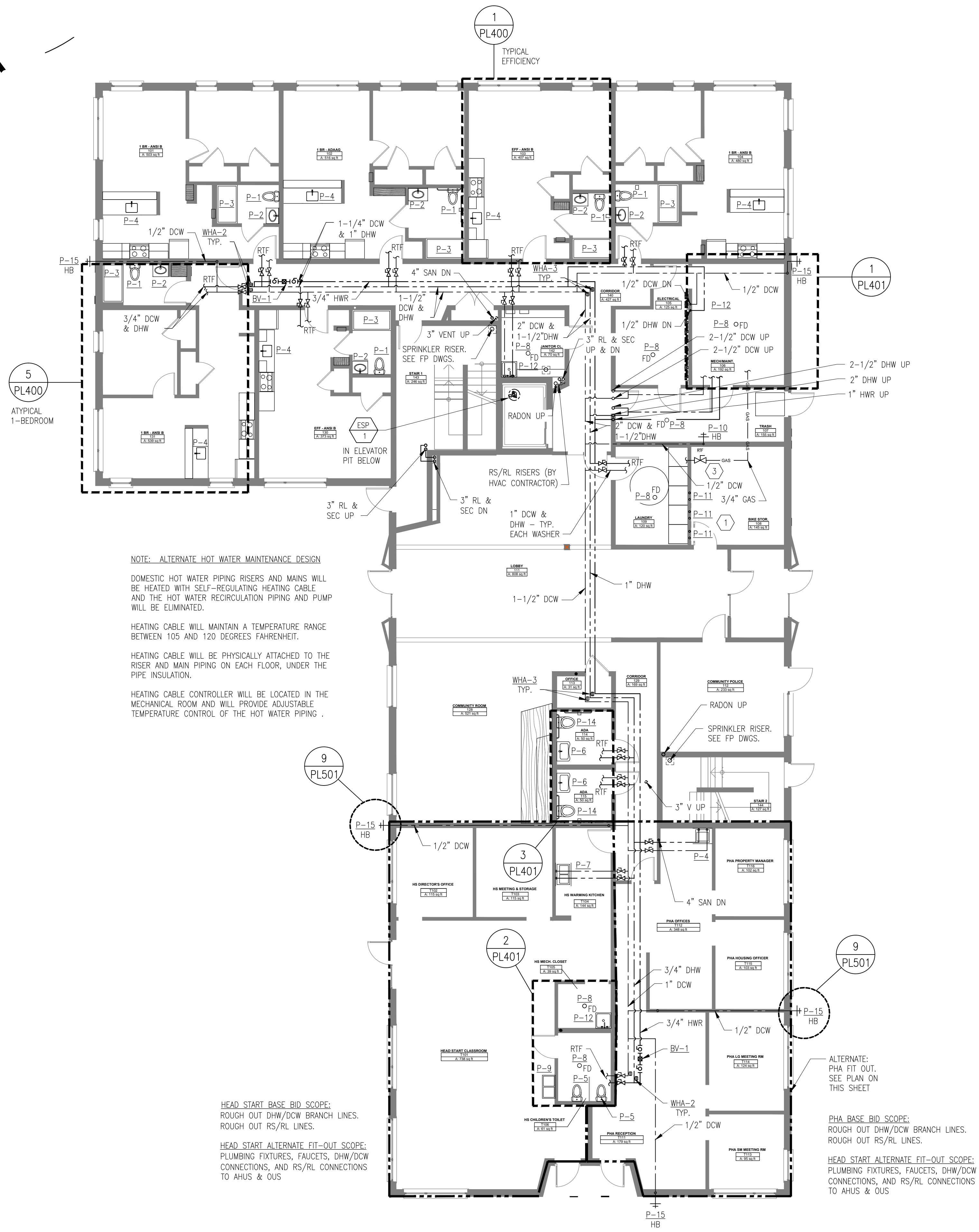


GENERAL NOTES

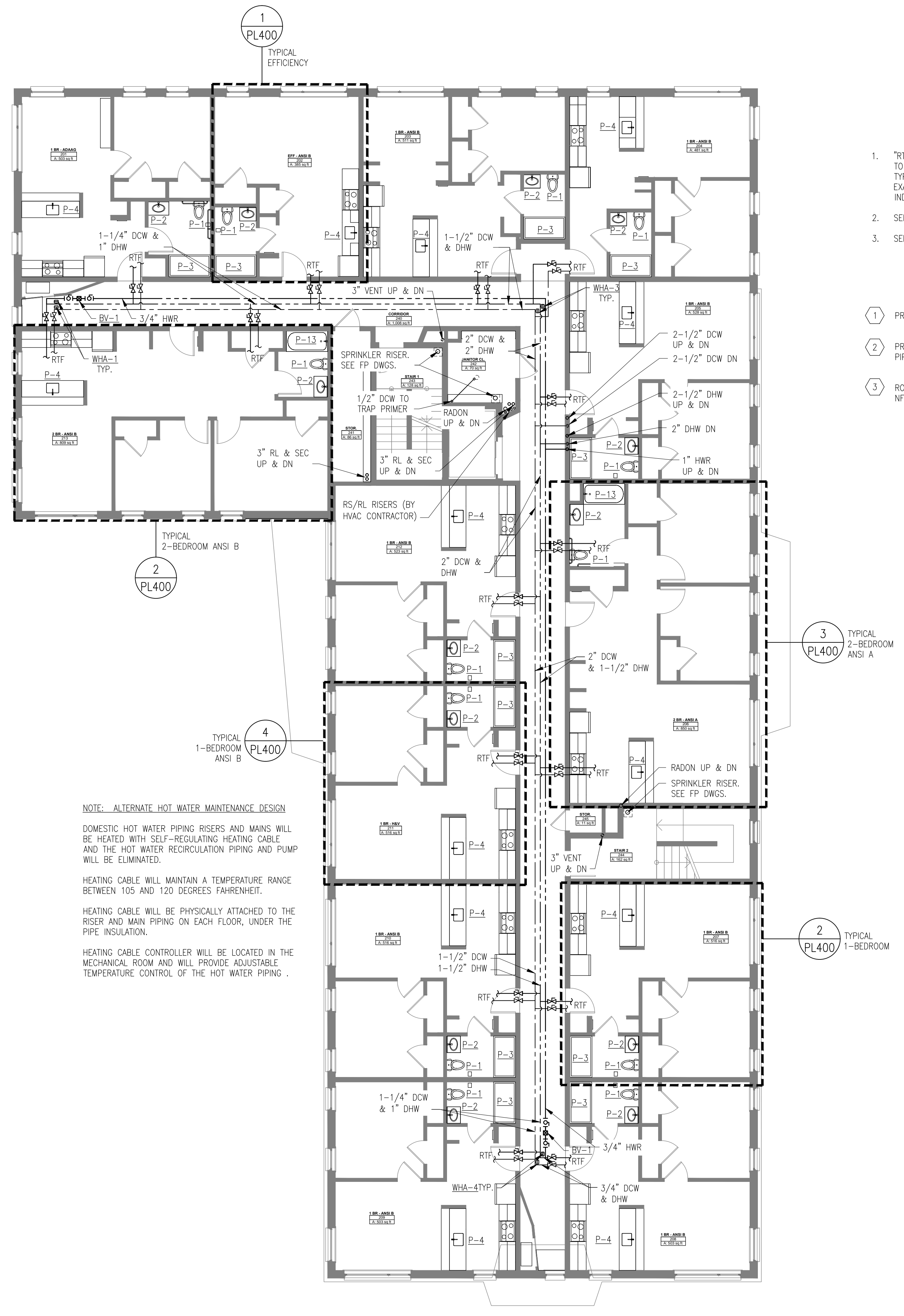
- 1. "RTF" IS THE ABBREVIATION FOR "RUN TO FIXTURES" RUN PIPING TO ALL PLUMBING FIXTURES IN THE RESPECTIVE UNIT. SEE TYPICAL APARTMENT DOMESTIC WATER PIPING CONFIGURATIONS FOR EXAMPLES OF LAYOUT AND SIZES. MODIFY AS REQUIRED FOR INDIVIDUAL FIELD CONDITIONS.
- 2. SEE DRAWING PL100 FOR UNDER SLAB PIPING.
- 3. SEE DRAWING PL001 FOR GENERAL NOTES.

KEY NOTES

- 1 PROVIDE ISOLATION VALVE AT EACH WASHER.
- 2 PROVIDE PROTECTIVE ADA SHIELDING ON EXPOSED LAVATORY PIPING.
- 3 ROUTE TO GAS DRYERS WHEN INSTALLED IN ACCORDANCE WITH NFPA 54.



FIRST FLOOR PIPING PLAN
SCALE: 1/8"=1'-0"



SECOND FLOOR PIPING PLAN
SCALE: 1/8"=1'-0"

NOTE: ALTERNATE HOT WATER MAINTENANCE DESIGN

DOMESTIC HOT WATER PIPING RISERS AND MAINS WILL BE HEATED WITH SELF-REGULATING HEATING CABLE AND THE HOT WATER RECIRCULATION PIPING AND PUMP WILL BE ELIMINATED.

HEATING CABLE WILL MAINTAIN A TEMPERATURE RANGE BETWEEN 105 AND 120 DEGREES FAHRENHEIT.

HEATING CABLE WILL BE PHYSICALLY ATTACHED TO THE RISER AND MAIN PIPING ON EACH FLOOR, UNDER THE PIPE INSULATION.

HEATING CABLE CONTROLLER WILL BE LOCATED IN THE MECHANICAL ROOM AND WILL PROVIDE ADJUSTABLE TEMPERATURE CONTROL OF THE HOT WATER PIPING .

NOTE: ALTERNATE HOT WATER MAINTENANCE DESIGN

DOMESTIC HOT WATER PIPING RISERS AND MAINS WILL BE HEATED WITH SELF-REGULATING HEATING CABLE AND THE HOT WATER RECIRCULATION PIPING AND PUMP WILL BE ELIMINATED.

HEATING CABLE WILL MAINTAIN A TEMPERATURE RANGE BETWEEN 105 AND 120 DEGREES FAHRENHEIT.

HEATING CABLE WILL BE PHYSICALLY ATTACHED TO THE RISER AND MAIN PIPING ON EACH FLOOR, UNDER THE PIPE INSULATION.

HEATING CABLE CONTROLLER WILL BE LOCATED IN THE MECHANICAL ROOM AND WILL PROVIDE ADJUSTABLE TEMPERATURE CONTROL OF THE HOT WATER PIPING .

HEAD START BASE BID SCOPE:
ROUGH OUT DHW/DCW BRANCH LINES.
ROUGH OUT RS/RL LINES.

HEAD START ALTERNATE FIT-OUT SCOPE:
PLUMBING FIXTURES, FAUCETS, DHW/DCW CONNECTIONS, AND RS/RL CONNECTIONS TO AHUS & OUS

ALTERNATE:
PHIA FIT OUT.
SEE PLAN ON THIS SHEET

PHIA BASE BID SCOPE:
ROUGH OUT DHW/DCW BRANCH LINES.
ROUGH OUT RS/RL LINES.

HEAD START ALTERNATE FIT-OUT SCOPE:
PLUMBING FIXTURES, FAUCETS, DHW/DCW CONNECTIONS, AND RS/RL CONNECTIONS TO AHUS & OUS



424 FORE ST.
PORTLAND, ME 04101
207-842-2888



14 BAXTER BLVD
PORTLAND, ME 04101
P: 207.773.4753



307 CUMBERLAND AVE
PORTLAND, ME 04101
P: 207.553.7777



217 COMMERCIAL STREET, STE 200
PORTLAND, MAINE 04101
207.772.1992 V. F. 207.772.0212



75 YORK ST.
PORTLAND, ME 04101
P: 207.879.1838



400 COMMERCIAL ST.
SUITE 404
PORTLAND, ME 04101
P: 207.772.2891



190 US ROUTE ONE
PMB 346 FALMOUTH, ME
04105
P: 207.847.3445

PRICING DOCUMENTS

Project:
BAYSIDE ANCHOR
PHDC & Avesta
81 East Oxford Street
Portland, ME

Drawing: PLUMBING FIRST & SECOND FLOOR PIPING PLANS

Scale: 1/8" = 1'-0"

Date: 9/1/15

Drawn by: AEW

Revised:

