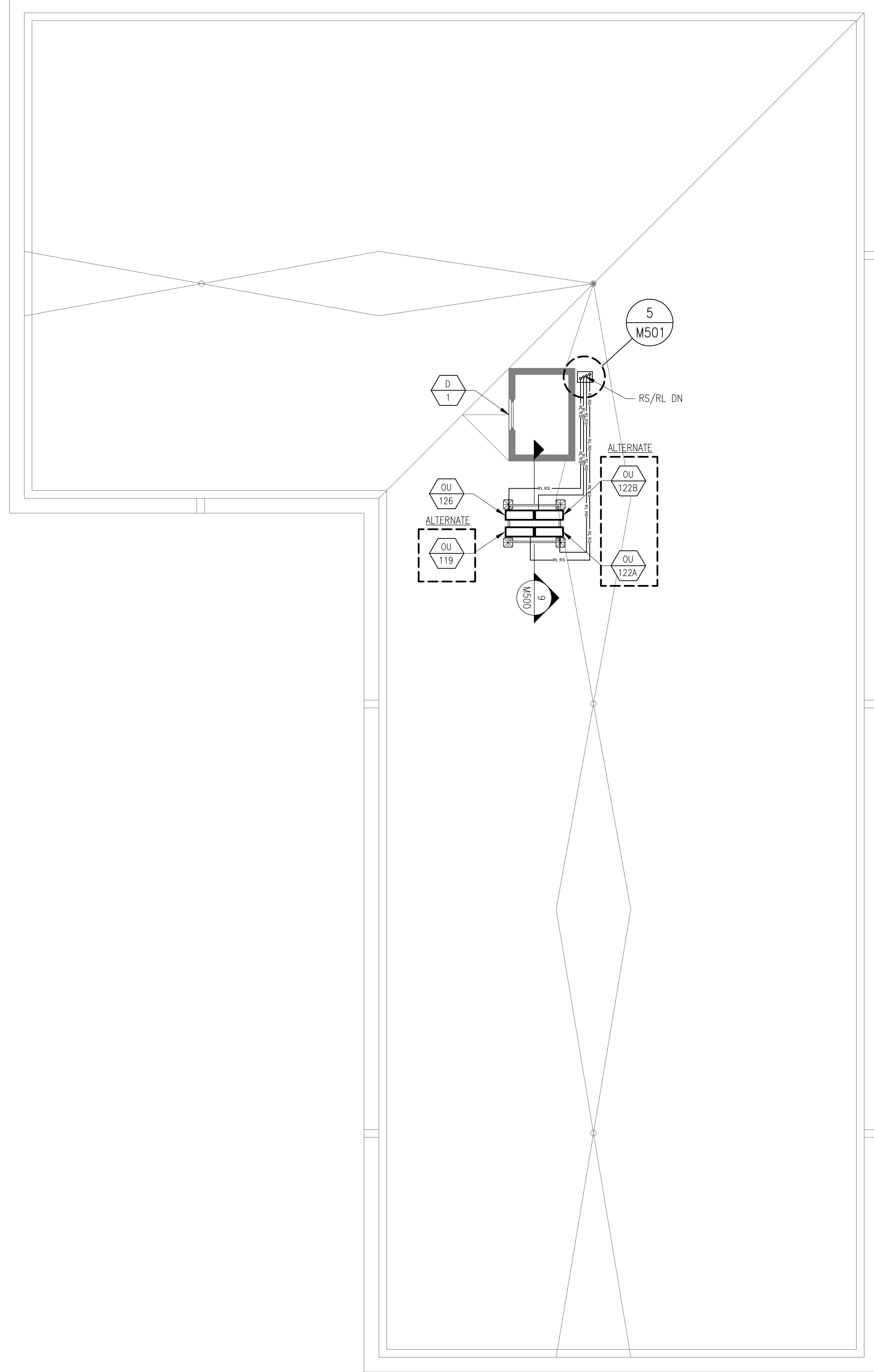
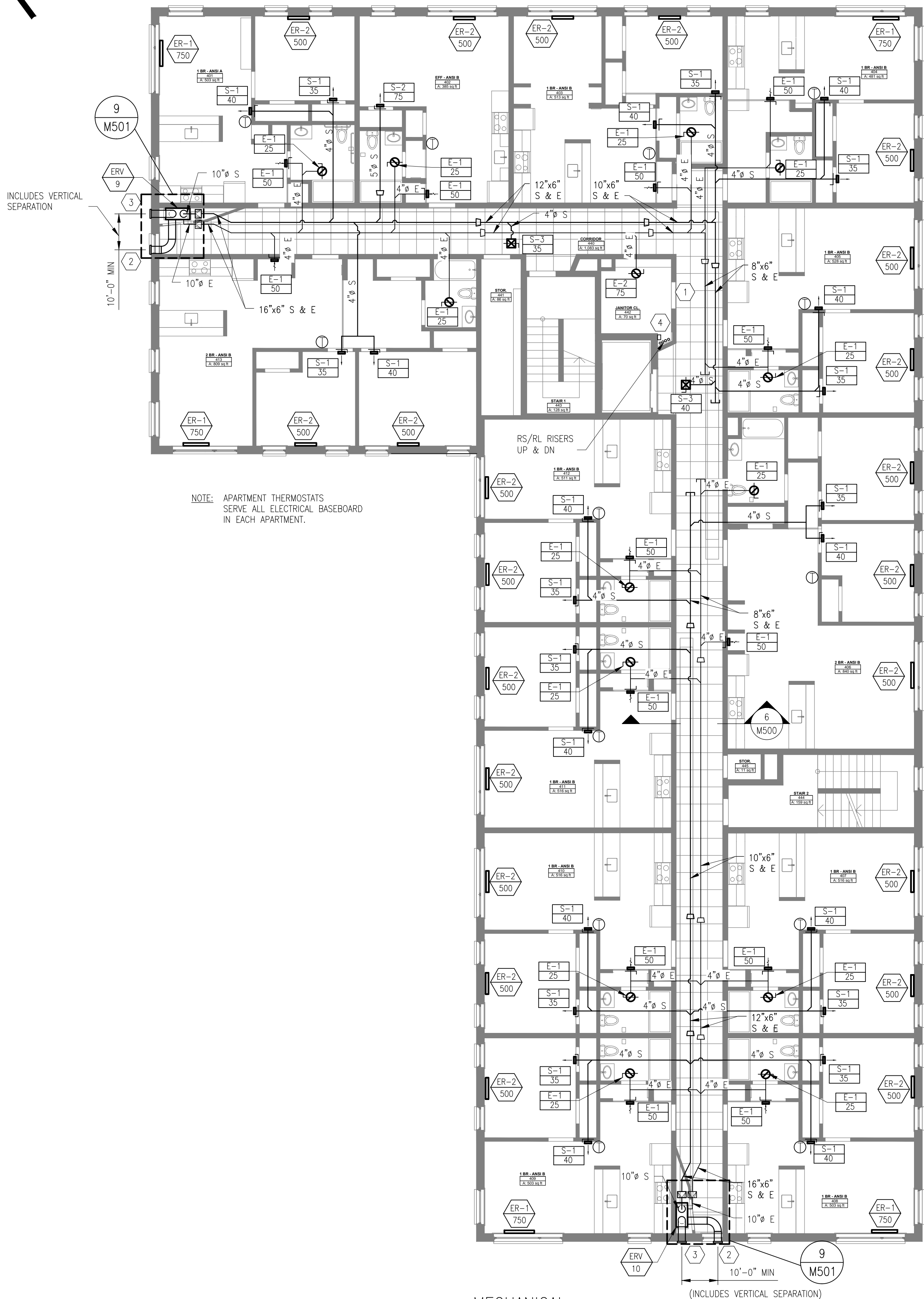


GENERAL NOTES

1. SEE M001 FOR MECHANICAL GENERAL NOTES.
2. PROVIDE MINIMUM 10'-0" CLEARANCE BETWEEN ERY OUTDOOR AIR INTAKE AND ANY EXHAUST OUTLET PER CODE.
3. HEAT WILL BE PROVIDED BY ELECTRIC RESISTANCE BASEBOARD HEATERS ALONG EXTERIOR WALLS IN THE LIVING UNITS.
4. VENTILATION AIR WILL BE PROVIDED BY CENTRALIZED ENERGY RECOVERY VENTILATORS (ERV) THAT ARE DUCTED TO MULTIPLE ROOMS PER ERY SYSTEM.
6. INSULATE ALL INTAKE AIR AND EXHAUST DUCTWORK.
7. SUPPLY AND RETURN MAINS LOCATED IN CORRIDORS TO BE STACKED. MAINS ARE SHOWN PARALLEL IN PLAN FOR CLARITY.

KEY NOTES

- 1 PROVIDE DOOR UNDERCUT.
- 2 ENERGY RECOVERY VENTILATOR INTAKE WEATHER HOOD WITH BIRD SCREEN.
- 3 ENERGY RECOVERY VENTILATOR EXHAUST WEATHER HOOD WITH BIRD SCREEN.
- 4 PROVIDE BRANCH BOX FOR LOBBY & COMMUNITY ROOM AIR HANDLING UNITS.



KAPLAN THOMPSON ARCHITECTS  
424 FORE ST.  
PORTLAND, ME 04101  
207-842-2888

PORTLAND HOUSING MAINE  
14 BAXTER BLVD  
PORTLAND, ME 04101  
P: 207.773.4753

AVESTA HOUSING  
307 CUMBERLAND AVE  
PORTLAND, ME 04101  
P: 207.553.7777

CARROLL ASSOCIATES LANDSCAPE ARCHITECTS  
217 COMMERCIAL STREET, SUITE 200  
PORTLAND, MAINE 04101  
207.772.1992 V. F. 207.772.0712

BECKER  
75 YORK ST.  
PORTLAND, ME 04101  
P: 207.879.1838

RANSOM Consulting Engineers and Scientists  
400 COMMERCIAL ST. SUITE 404  
PORTLAND, ME 04101  
P: 207.772.2891

APEX ENGINEERING  
190 US ROUTE ONE  
PMB 346 FALMOUTH, ME 04105  
P: 207.847.3445

PRICING DOCUMENTS

Project: BAYSIDE ANCHOR  
PHDC & Avesta  
81 East Oxford Street  
Portland, ME

Drawing: MECHANICAL FOURTH FLOOR & ROOF PLAN  
Scale: AS NOTED  
Date: 9/1/15  
Drawn by: AEW  
Revised:

