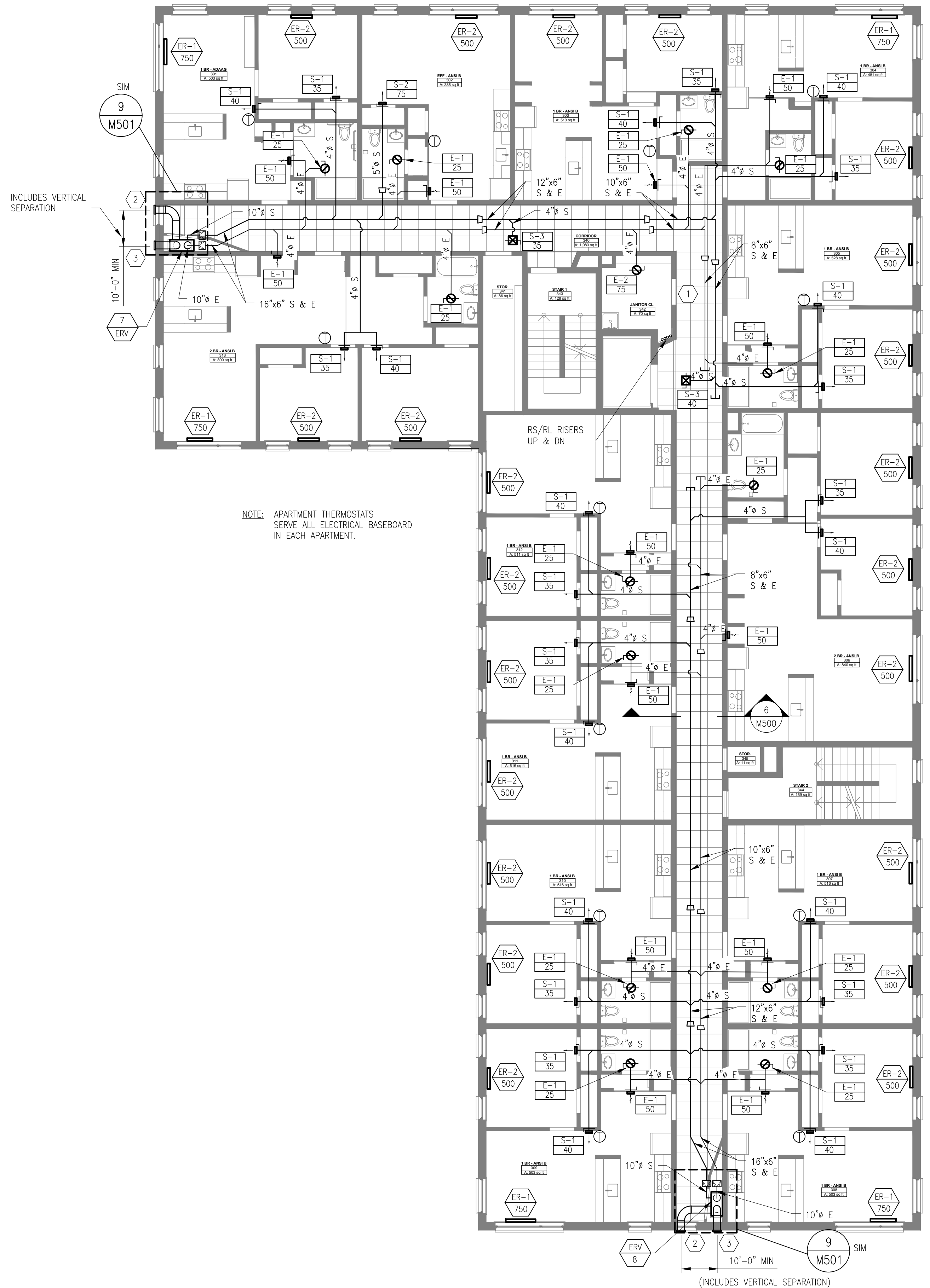
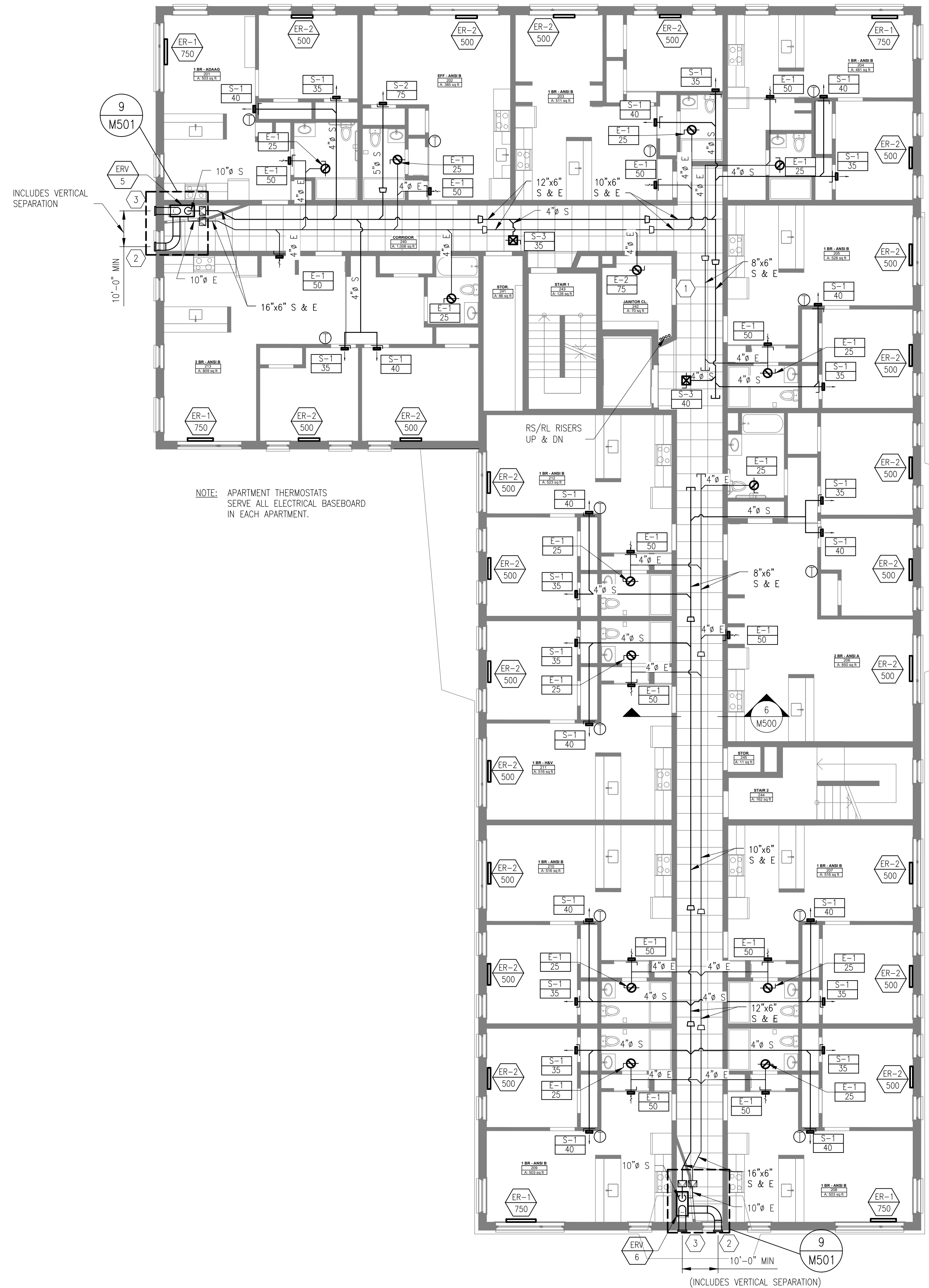


GENERAL NOTES

- SEE M001 FOR MECHANICAL GENERAL NOTES.
- PROVIDE MINIMUM 10'-0" CLEARANCE BETWEEN ERV OUTDOOR AIR INTAKE AND ANY EXHAUST OUTLET PER CODE.
- HEAT WILL BE PROVIDED BY ELECTRIC RESISTANCE BASEBOARD HEATERS ALONG EXTERIOR WALLS IN THE LIVING UNITS.
- VENTILATION AIR WILL BE PROVIDED BY CENTRALIZED ENERGY RECOVERY VENTILATORS (ERV) THAT ARE DUCTED TO MULTIPLE ROOMS PER ERV SYSTEM.
- INSULATE ALL INTAKE AIR AND EXHAUST DUCTWORK.
- SUPPLY AND RETURN MAINS LOCATED IN CORRIDORS TO BE STACKED. MAINS ARE SHOWN PARALLEL IN PLAN FOR CLARITY.

KEY NOTES

- PROVIDE DOOR UNDERCUT.
- ENERGY RECOVERY VENTILATOR INTAKE WEATHER HOOD WITH BIRD SCREEN.
- ENERGY RECOVERY VENTILATOR EXHAUST WEATHER HOOD WITH BIRD SCREEN.



KAPLAN THOMPSON ARCHITECTS  
424 FORE ST.  
PORTLAND, ME 04101  
207-842-2888

PORTLAND HOUSING MAINE  
14 BAXTER BLVD  
PORTLAND, ME 04101  
P: 207.773.4753

AVESTA HOUSING  
307 CUMBERLAND AVE  
PORTLAND, ME 04101  
P: 207.553.7777

CARROLL ASSOCIATES LANDSCAPE ARCHITECTS  
217 COMMERCIAL STREET, STE 300  
PORTLAND, MAINE 04101  
207.772.1582 V. 207.772.0712

BECKER  
75 YORK ST.  
PORTLAND, ME 04101  
P: 207.879.1838

RANSOM Consulting Engineers and Scientists  
400 COMMERCIAL ST. SUITE 404  
PORTLAND, ME 04101  
P: 207.772.2891

APEX ENGINEERING  
190 US ROUTE ONE  
PMB 346 FALMOUTH, ME  
04105  
P: 207.847.3445

PRICING DOCUMENTS

Project: BAYSIDE ANCHOR  
PHDC & Avesta  
81 East Oxford Street  
Portland, ME

Drawing: MECHANICAL SECOND & THIRD FLOOR PLANS  
Scale: AS NOTED  
Date: 9/1/15  
Drawn by: AEW  
Revised:

