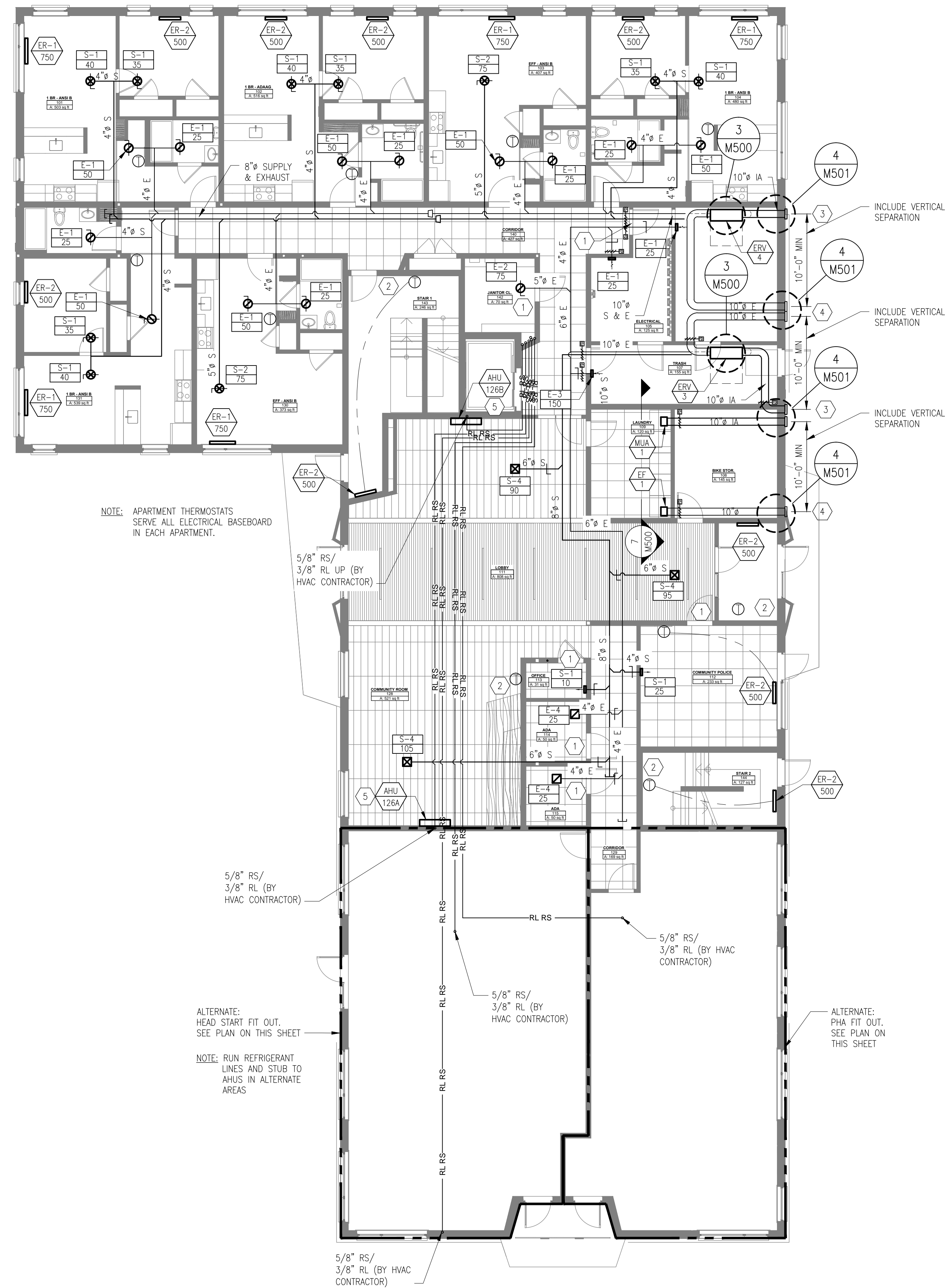


## GENERAL NOTES

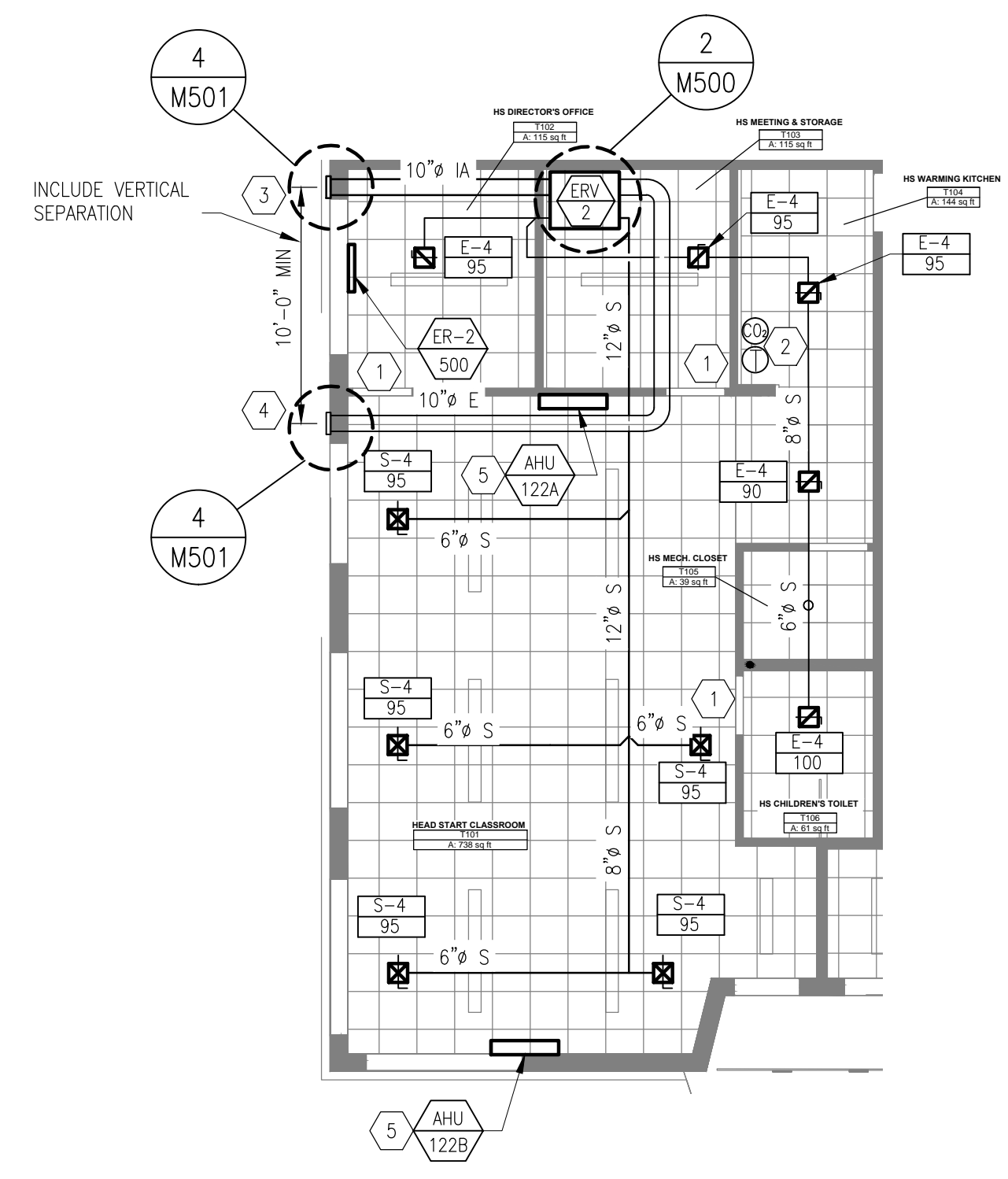
- SEE MD01 FOR MECHANICAL GENERAL NOTES.
- PROVIDE MINIMUM 10'-0" CLEARANCE BETWEEN ERYV OUTDOOR AIR INTAKE AND ANY EXHAUST OUTLET PER CODE.
- HEAT WILL BE PROVIDED BY ELECTRIC RESISTANCE BASEBOARD HEATERS ALONG EXTERIOR WALLS IN THE LIVING UNITS.
- PRIMARY HEATING AND COOLING WILL BE PROVIDED BY SPLIT AIR-CONDITIONING HEAT PUMP SYSTEMS IN THE COMMON AREAS, OFFICE SPACE, AND HEAD START. BACK-UP HEATING WILL BE PROVIDED BY ELECTRIC RESISTANCE BASEBOARD HEATERS.
- VENTILATION AIR WILL BE PROVIDED BY CENTRALIZED ENERGY RECOVERY VENTILATORS (ERV) THAT ARE DUCTED TO MULTIPLE ROOMS PER ERYV SYSTEM.
- INSULATE ALL INTAKE AIR DUCTWORK.
- SUPPLY AND RETURN MAINS LOCATED IN CORRIDORS TO BE STACKED. MAINS ARE SHOWN PARALLEL IN PLAN FOR CLARITY.

## KEY NOTES

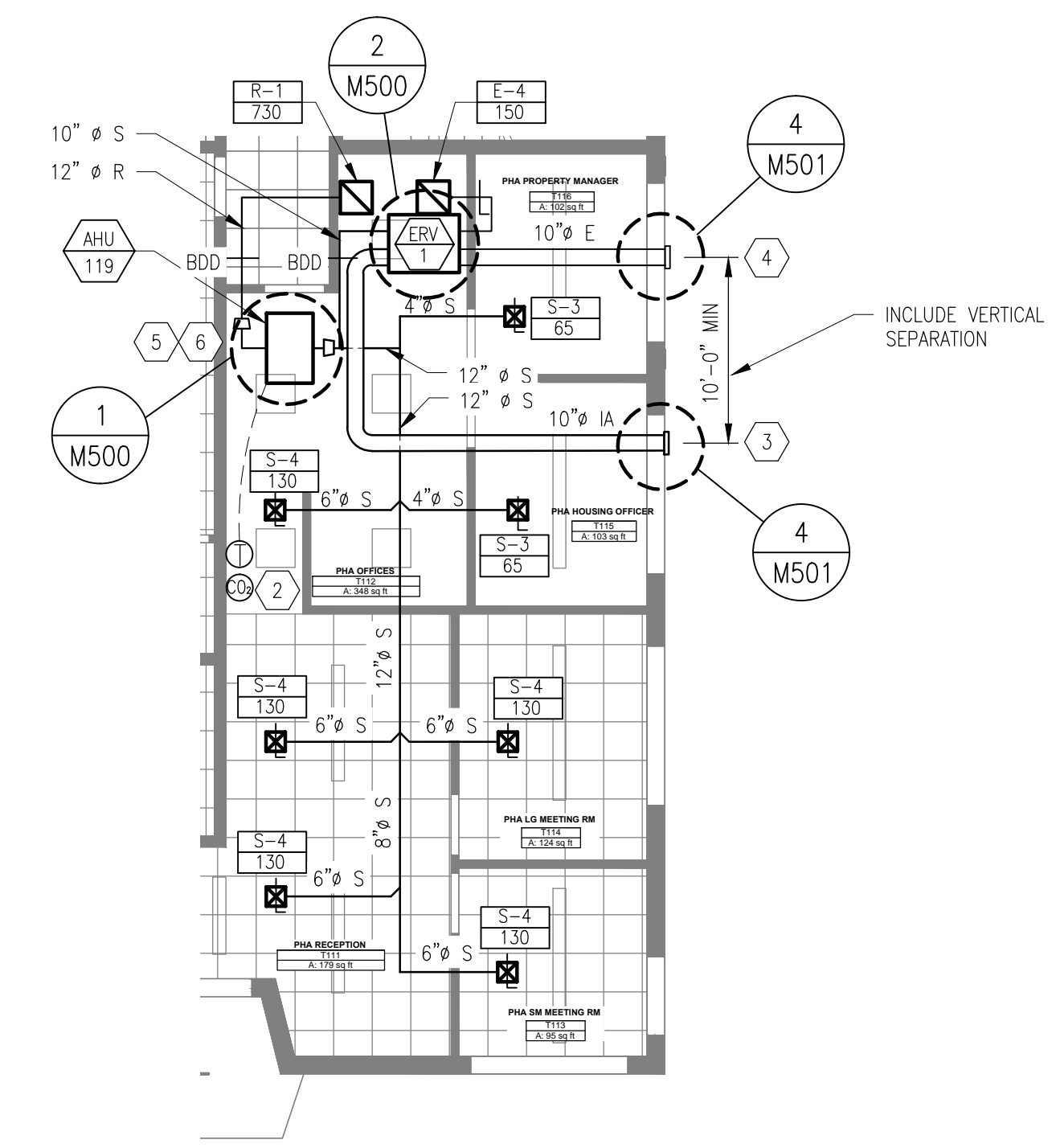
- PROVIDE DOOR UNDERCUT.
- PROVIDE THERMOSTAT LOCK BOX.
- ENERGY RECOVERY VENTILATOR INTAKE WEATHER HOOD WITH BIRD SCREEN.
- ENERGY RECOVERY VENTILATOR EXHAUST WEATHER HOOD WITH BIRD SCREEN.
- ROUTE TRAPPED CONDENSATE DRAIN TO NEAREST WASTE DRAIN. PROVIDE AIR GAP FITTING AT CONDENSATE-WASTE CONNECTION.
- CREATE CUSTOM TRANSITION FOR AIR HANDLING UNIT SUPPLY AND RETURN CONNECTIONS.



MECHANICAL  
FIRST FLOOR PLAN - BASE BID  
SCALE: 1/8"=1'-0"



ALTERNATE:  
HEAD START FIT OUT  
MECHANICAL FIRST FLOOR PLAN  
SCALE: 1/8"=1'-0"



ALTERNATE:  
PHA FIT OUT  
MECHANICAL FIRST FLOOR PLAN  
SCALE: 1/8"=1'-0"