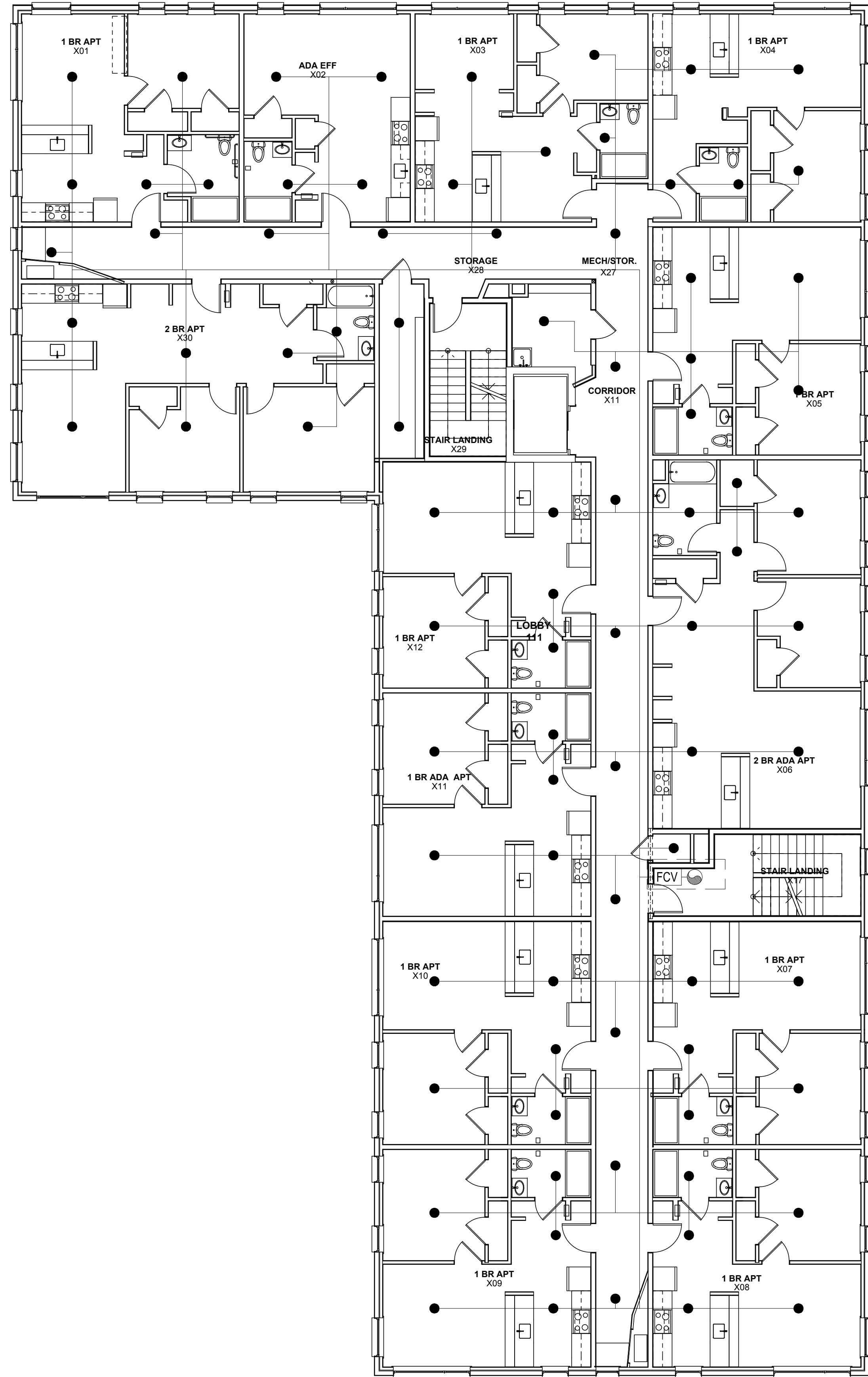
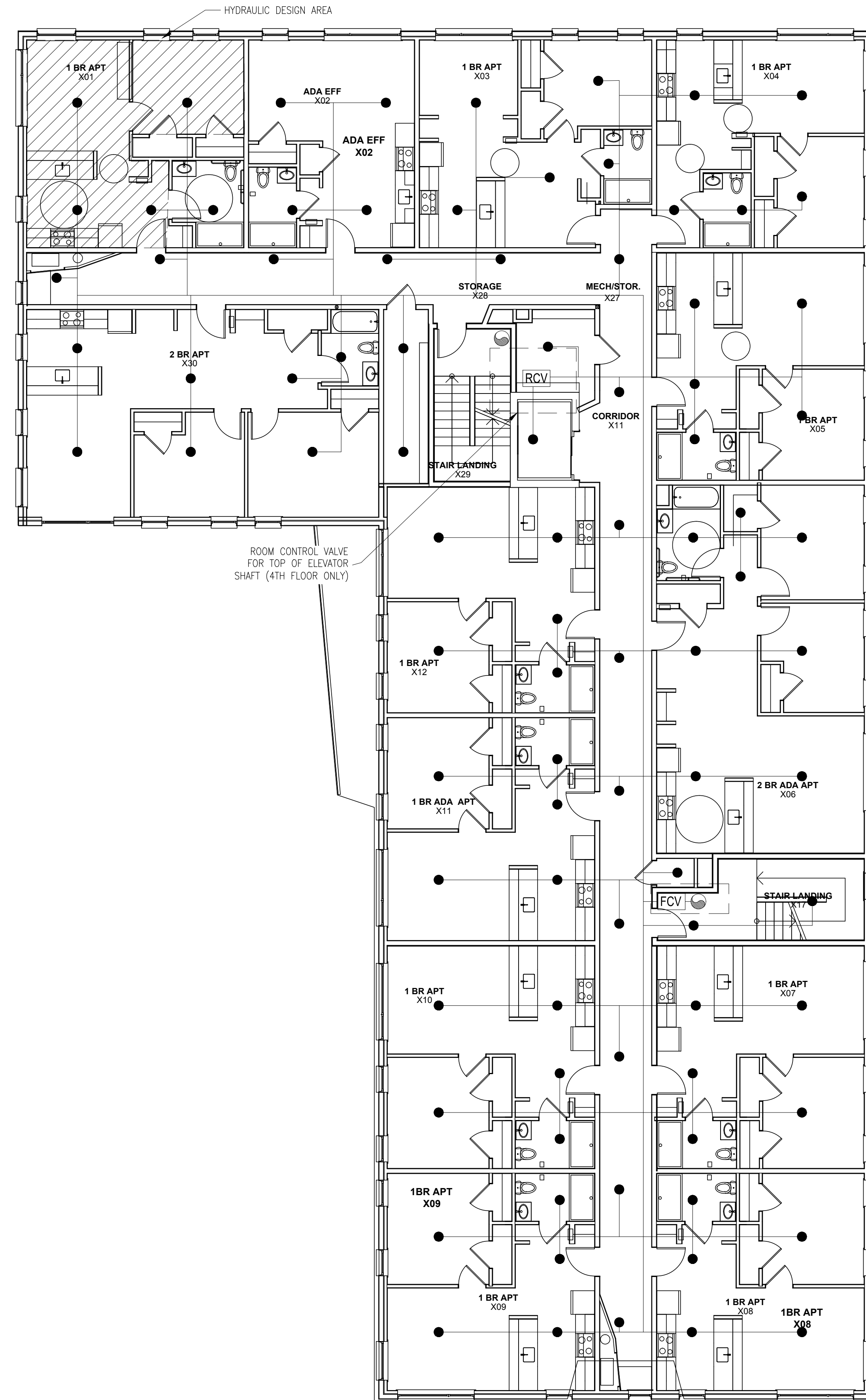
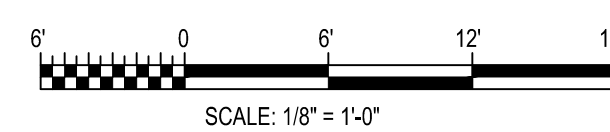


NOTES:

- 1. SPRINKLERS ARE REQUIRED IN CLOSETS GREATER THAN 24 SQUARE FEET AND/OR IN CLOSETS WITH A LEAST DIMENSION EXCEEDING 3 FEET.



FIRE SPRINKLER
THIRD FLOOR PLAN



FIRE SPRINKLER
FOURTH FLOOR PLAN



HYDRAULIC CALCULATIONS	
DESIGN AREA: 1	
NFPA HAZARD	LIGHT - NFPA 13R
System Type	WET
Water Supply	- Static 102 PSI
	- Residual 100 PSI
	- Flowing 1352 GPM
Fire Pump	-
Calculated Density	0.05 (GPM/SF)
Remote Area Size	390 SF
Coverage Per Head	97.5 SF (4 HEADS)
System Demand	62 GPM @ 32 PSI
Hose Demand	-
Total Demand	62 GPM @ 32 PSI
Excess Available PSI	70 PSI



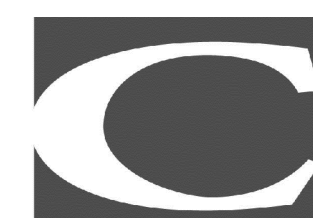
424 FORE ST.
PORTLAND, ME 04101
207-842-2888



14 BAXTER BLVD
PORTLAND, ME 04101
P: 207.773.4753



307 CUMBERLAND AVE
PORTLAND, ME 04101
P: 207.553.7777



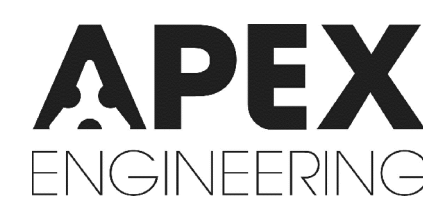
217 COMMERCIAL STREET, STE 200
PORTLAND, MAINE 04101
207.372.1592 V. F. 207.372.0312



75 YORK ST.
PORTLAND, ME 04101
P: 207.879.1838



400 COMMERCIAL ST.
SUITE 404
PORTLAND, ME 04101
P: 207.772.2891



190 US ROUTE ONE
PMB 346 FALMOUTH, ME
04105
P: 207.847.3445

PRICING DOCUMENTS

Project:
BAYSIDE ANCHOR
PHDC & Avesta
81 East Oxford Street
Portland, ME

Drawing: FIRE SPRINKLER - FLOOR PLANS

Scale: 1/8" = 1'-0"

Date: 9/1/15

Drawn by: JM

Revised:

FX102

