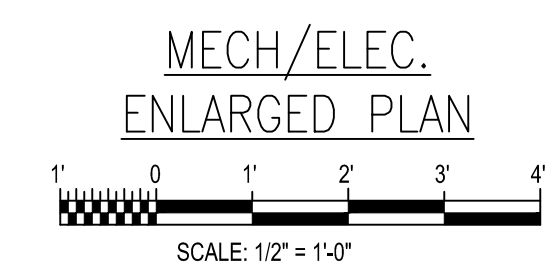
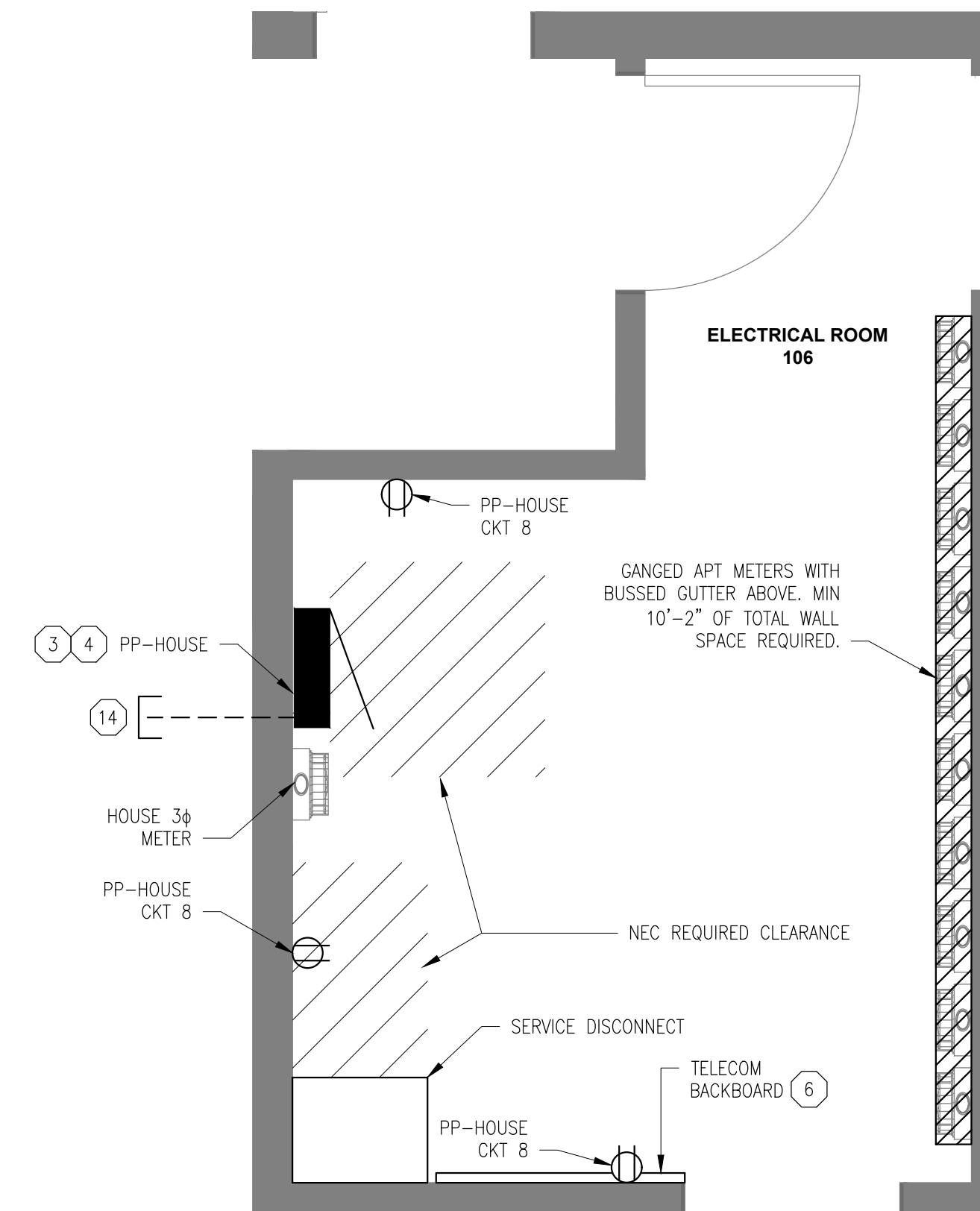
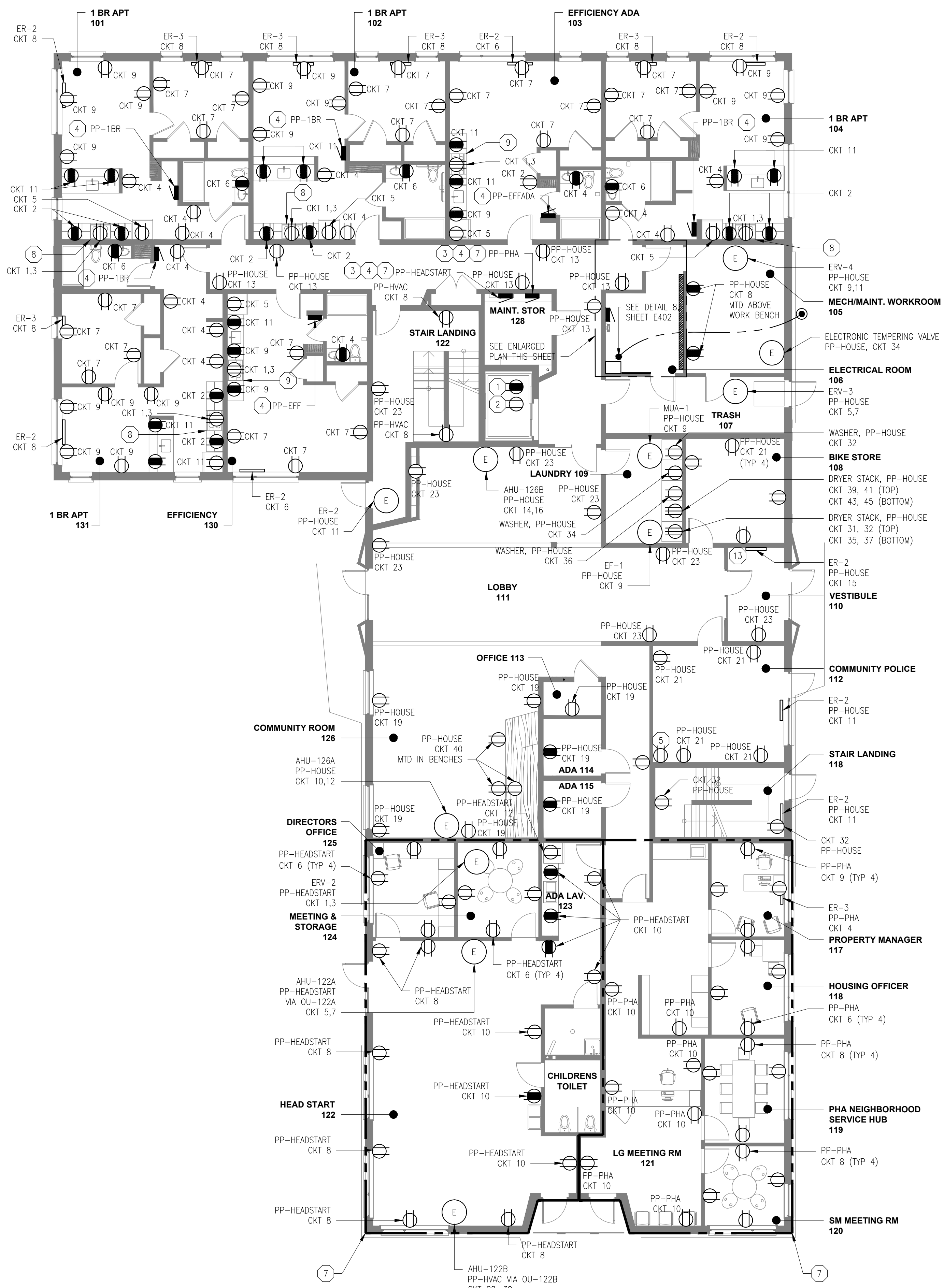


GENERAL NOTES

- 1. ALL CIRCUITING SHOWN IN APARTMENTS SHALL BE ROUTED TO THE PANEL LOCATED WITHIN THE APARTMENT.
- 2. ALL SINGLE PHASE CIRCUITS 20A OR LESS SHALL BE WIRED USING 2#12, W/#12GND.
- 3. ALL RANGE RECEPTACLES SHALL BE WIRED USING 3#8CU, W/#10GND CU

KEY NOTES

- 1. ELEVATOR PIT GFCI RECEPTACLE, CTG. CTG TO BE UPSTREAM OF GFCI RECEPT. PP-HOUSE CKT 15
- 2. SUMP PUMP PIT RECEPT, PP-HOUSE CKT 17
- 3. SEE SHEET E201 FOR FEEDER CONDUCTOR SIZING.
- 4. SEE SHEETS E600 & E601 FOR PANEL SCHEDULES.
- 5. NOT USED.
- 6. PROVIDE 3/4" PLYWOOD BACKERBOARD PAINTED BLACK, MOUNTED ON 2"x4" STUDS FOR TELECOM AND SECURITY EQUIPMENT.
- 7. PROVIDE PANELBOARDS AND BREAKERS FOR HEAD START AND PHA UNDER BASE BID ONLY. ALL OTHER ELECTRICAL EQUIPMENT AND WIRING PROVIDE UNDER ALTERNATE.
- 8. RANGE HOOD SHALL BE WIRED TO PP-1BR CKT 12.
- 9. RANGE HOOD SHALL BE WIRED TO PP-EFF CKT 10.
- 10. RANGE HOOD SHALL BE WIRED TO PP-EFFADA CKT 10.
- 11. RANGE HOOD SHALL BE WIRED TO PP-2BR CKT 10.
- 12. RANGE HOOD SHALL BE WIRED TO PP-ADA2BR CKT 10.
- 13. SEE FIRE ALARM DRAWINGS FOR FACP LOCATION. PROVIDE POWER FROM PP-HOUSE CKT 18.
- 14. 1" CONDUIT FOR BOLLARD LIGHTING/RECEPTACLES. LIGHTING SHALL BE TIED INTO COURTYARD CANOPY PHOTOCELL AND FED FROM PP-HOUSE CKT 2. RECEPTACLES SHALL BE FED FROM PP-HOUSE CKT 38.



POWER PLAN FIRST FLOOR
SCALE: 1/8" = 1'-0"

KAPLAN THOMPSON ARCHITECTS
424 FORE ST.
PORTLAND, ME 04101
207-842-2888

PORTLAND HOUSING
14 BAXTER BLVD
PORTLAND, ME 04101
P: 207.773.4753

AVESTA HOUSING
307 CUMBERLAND AVE
PORTLAND, ME 04101
P: 207.553.7777

CARROLL ASSOCIATES LANDSCAPE ARCHITECTS
217 COMMERCIAL STREET, STE 200
PORTLAND, MAINE 04101
207.772.1522 V. F. 207.772.0712

BECKER
75 YORK ST.
PORTLAND, ME 04101
P: 207.879.1838

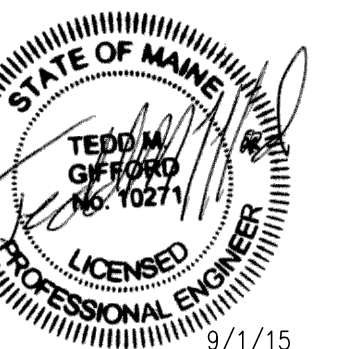
RANSOM Consulting Engineers and Scientists
400 COMMERCIAL ST. SUITE 404
PORTLAND, ME 04101
P: 207.772.2891

APEX ENGINEERING
190 US ROUTE ONE
PMB 346 FALMOUTH, ME
04105
P: 207.847.3445

100% ISSUE FOR CONSTRUCTION

Project: BAYSIDE ANCHOR
PHDC & Avesta
81 East Oxford Street
Portland, ME

Drawing: ELECTRICAL POWER PLAN FIRST FLOOR
Scale: AS SHOWN
Date: 9/1/15
Drawn by: ACY
Revised:



E100