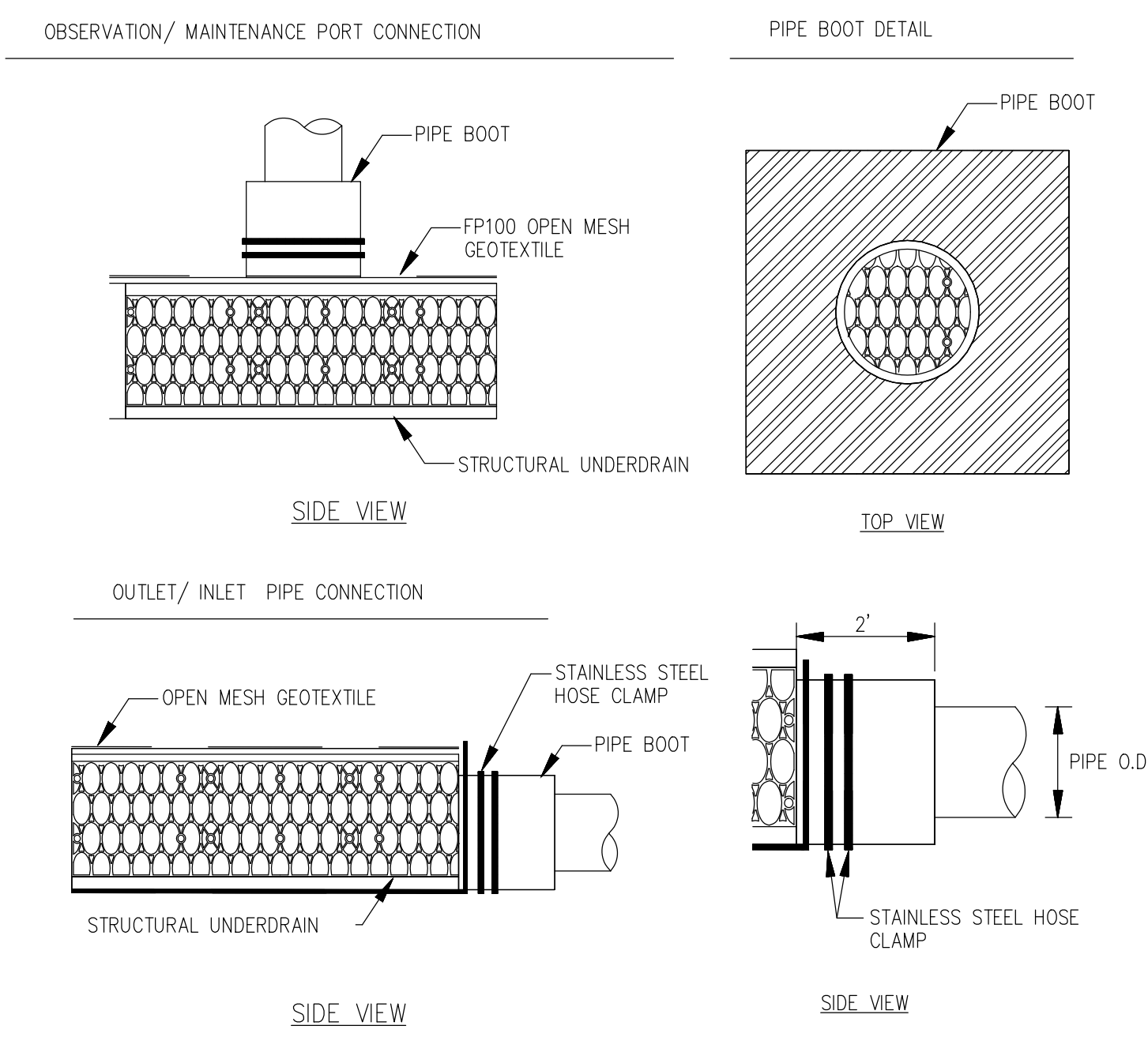


18" FABCO BEEHIVE OVERFLOW FILTER HARCO RISER
NOT TO SCALE



R-TANK PIPE AND OBSERVATION PORT CONNECTIONS
NOT TO SCALE

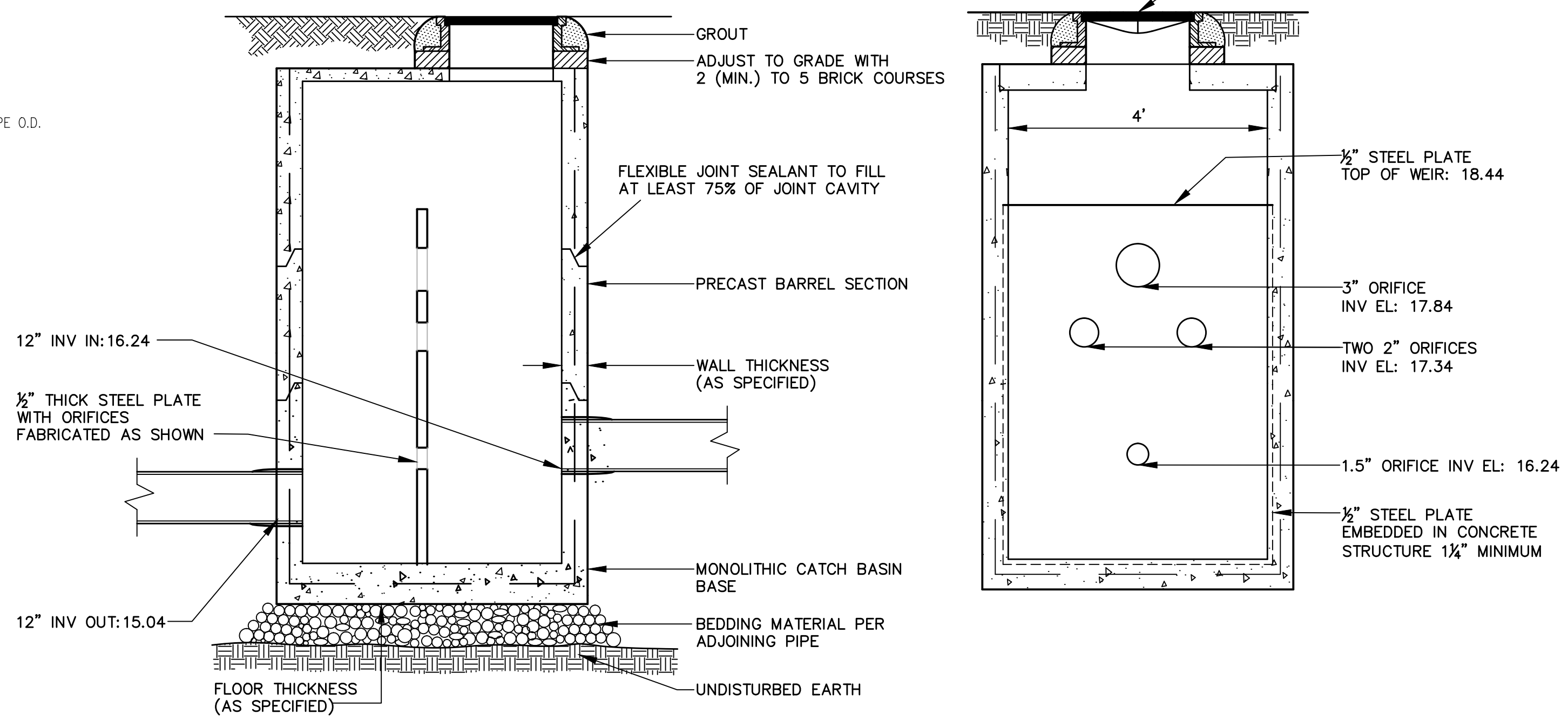
- NOTES FOR 9780-1-000 18" CATCH-IT:
- PERFORMANCE CHARACTERISTICS (TYP):
 - DEBRIS CAPACITY: 1.65 CU-FT
 - FILTERED FLOW RATE: 1440 GPM (2.5 CFS)
 - BYPASS FLOW RATE: 445 GPM (1.0 CFS)
 - USE ONLY WITH FABCO REPLACEABLE STORMSACK, P/N: 9780-1-200

INFILTRATION AREA. DO NOT OVER-COMPACT SUBGRADE. KEEP EXCAVATED MARINE CLAY OUT OF THIS AREA. IF CONTAMINATED WITH CLAY, EXCAVATE AND REPLACE WITH GRANULAR BORROW MDOT 703.19 (PRE LOAD MATERIAL).

FOCAL POINT & R-TANK STORMWATER MANAGEMENT SYSTEM DETAIL
NOT TO SCALE

FOCALPOINT R-TANK AND HARCO DRAIN ARE PROVIDED BY ACF ENVIRONMENTAL FOR AVAILABILITY CONTACT:

Robert, J Woodman P.E., CPESC
Senior Stormwater Engineer
ACF Environmental
93 Falmouth Rd, Falmouth ME 04105
Mobile Office Phone (207) 272-4431
rwoodman@acfenv.com
www.acfenvironmental.com



I.D.	WALL WIDTH	FLOOR THICKNESS
4'-0"	5"	6"

FLOW CONTROL STRUCTURE
NOT TO SCALE

Project:
Bayside Anchor
81 East Oxford Street
Portland, Maine

Prepared for:
Portland Housing
Development Corporation
14 Baxter Boulevard
Portland, Maine

KAPLAN THOMPSON
ARCHITECTS
424 fore st., portland, me 04101
207-842-2888 fax: 842-2828
jesse@kaplonthompson.com

CARROLL ASSOCIATES
LANDSCAPE ARCHITECTS
217 COMMERCIAL STREET, STE 200
PORTLAND, MAINE 04101
207.772.1552 V. F. 207.772.0712

BECKER
STRUCTURAL ENGINEERS
75 YORK ST.
PORTLAND, ME 04101
P: 207.879.1838
F: 207.879.1822

RANSOM
Consulting, Inc.
400 Commercial Street, Suite 404,
Portland, Maine 04101
Tel (207) 772-2891
Fax (207) 772-3248
www.ransomenv.com

PORTLAND HOUSING
MAINE DEVELOPMENT CORPORATION
14 BAXTER BLVD
PORTLAND, ME 04101
P: 207.773.4753
F: 207.774.6471

STATE OF MAINE
John Mahoney #12340
LICENSED PROFESSIONAL ENGINEER

Drainage Details

No.	Revision/Issue	Date
C	Pricing Documents	8-31-15
B	90% Design Review	6-22-15
A	City Permitting	7-1-14

Design by: JIM
Checked by: SUB
Drawn by: JIM
Approved by: SUB

Project:
131.06132

Sheet No:
C103