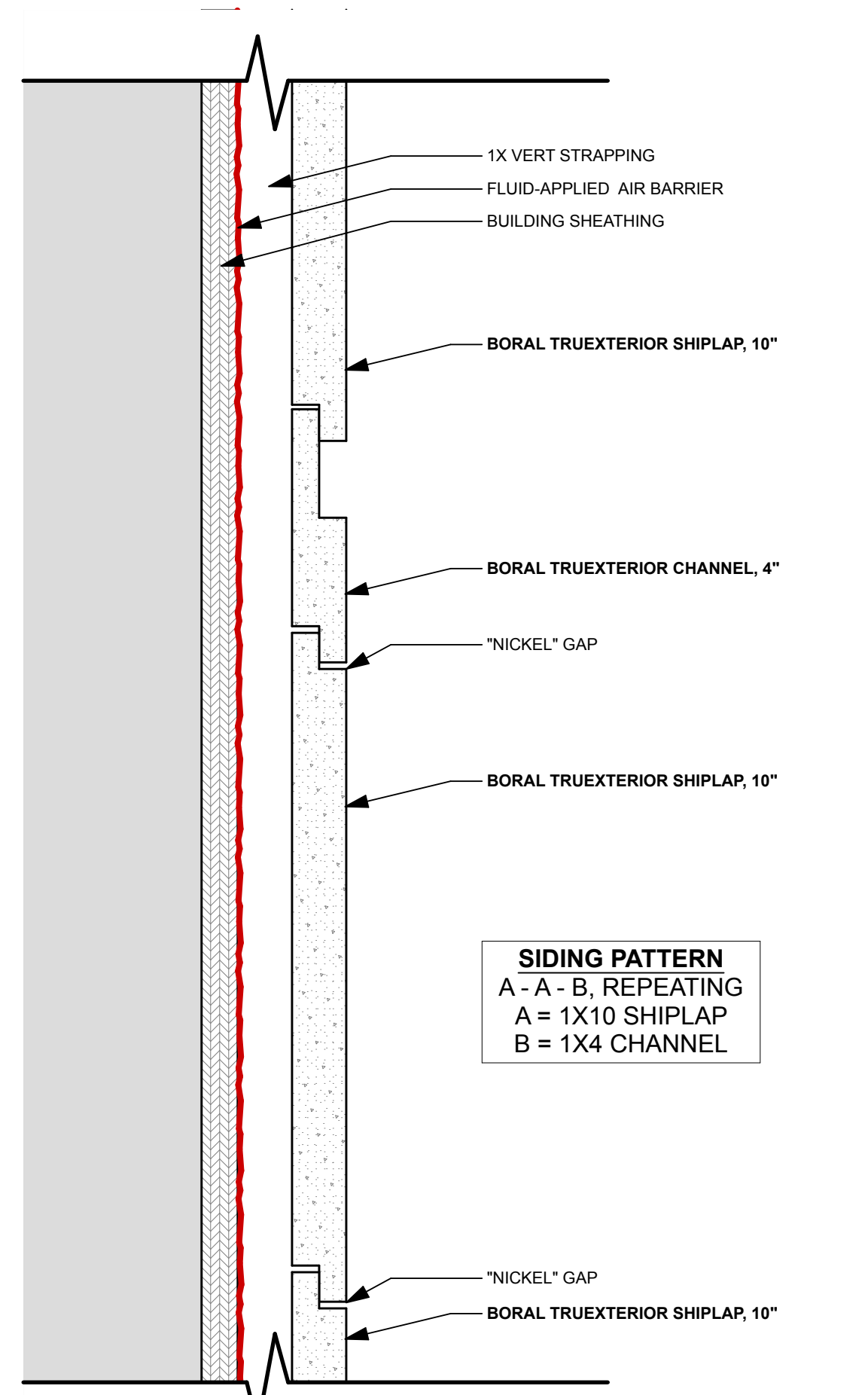
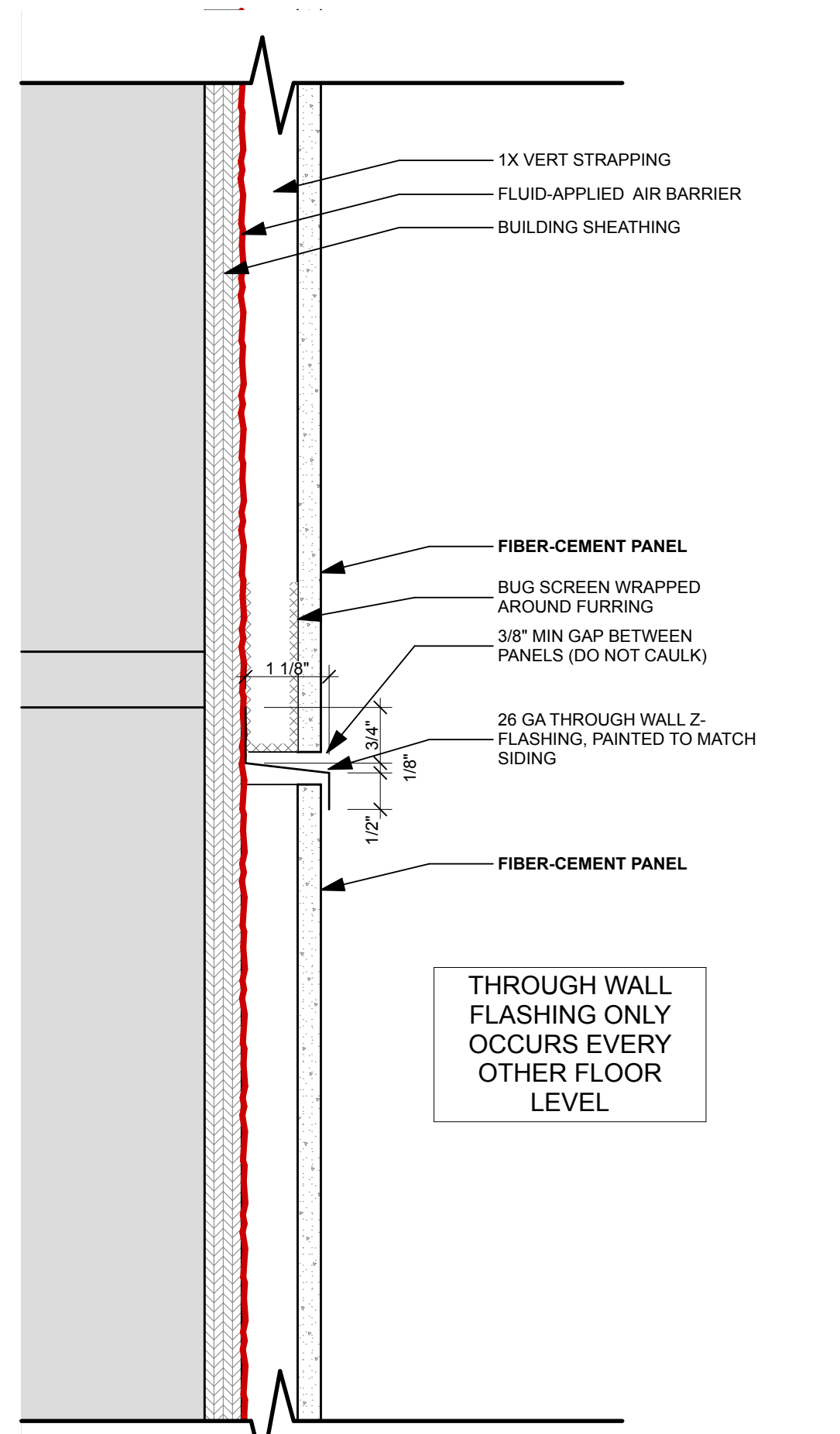


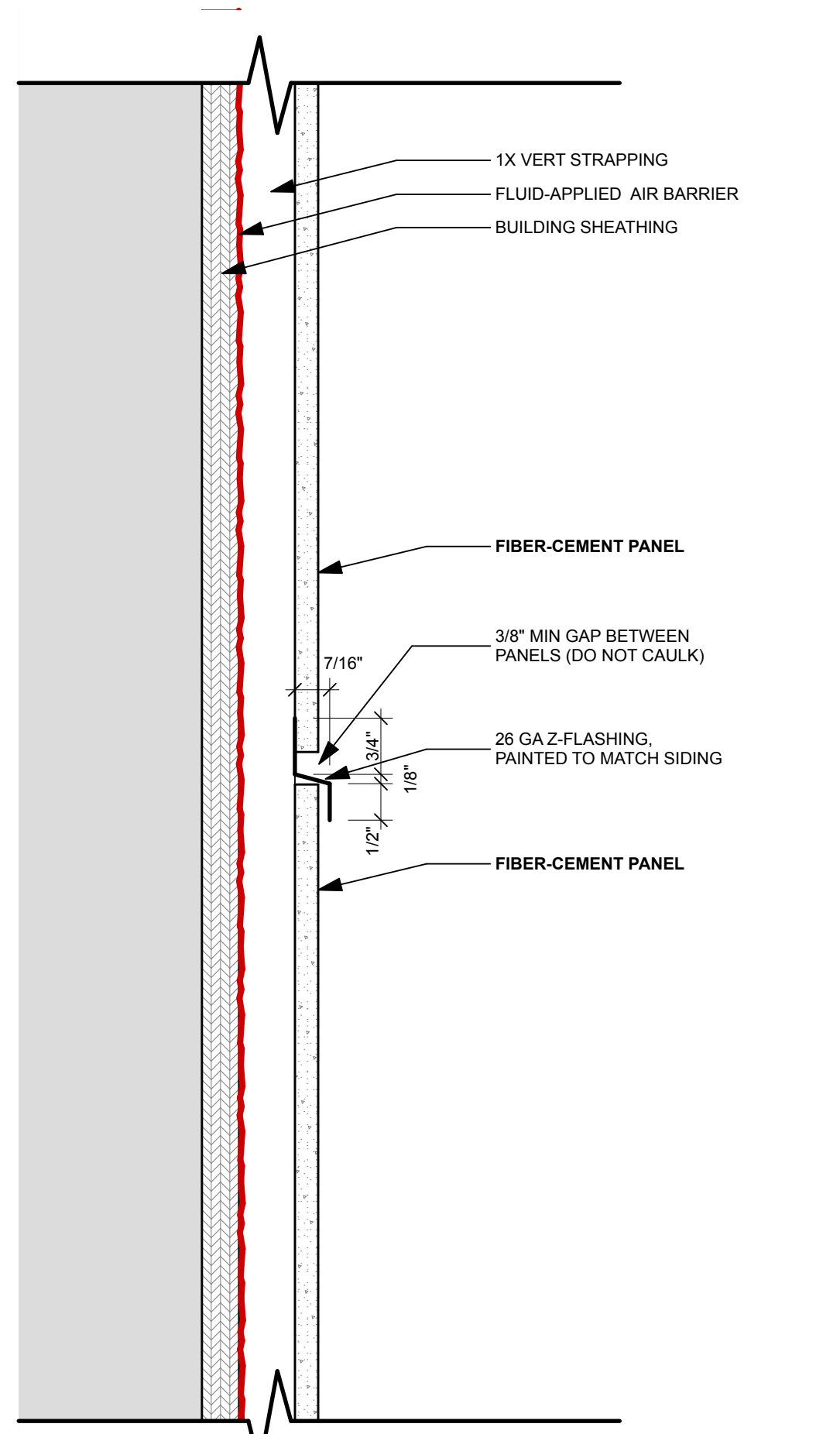
11 CLAPBOARD CORNER ELEVATION
SCALE: 3" = 1'-0"



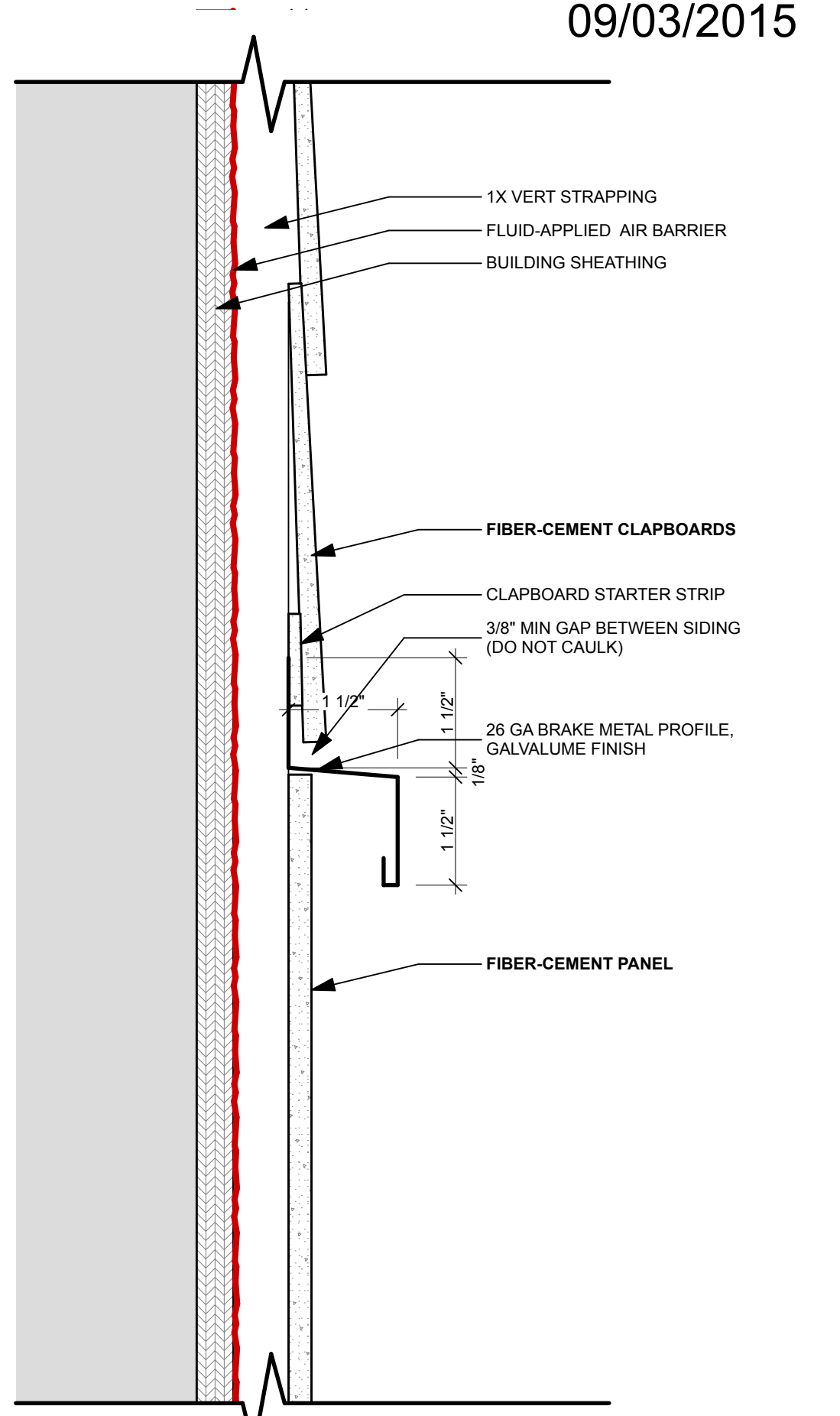
4 SHIPLAP & CHANNEL HORZ, TYP
SCALE: 6" = 1'-0"



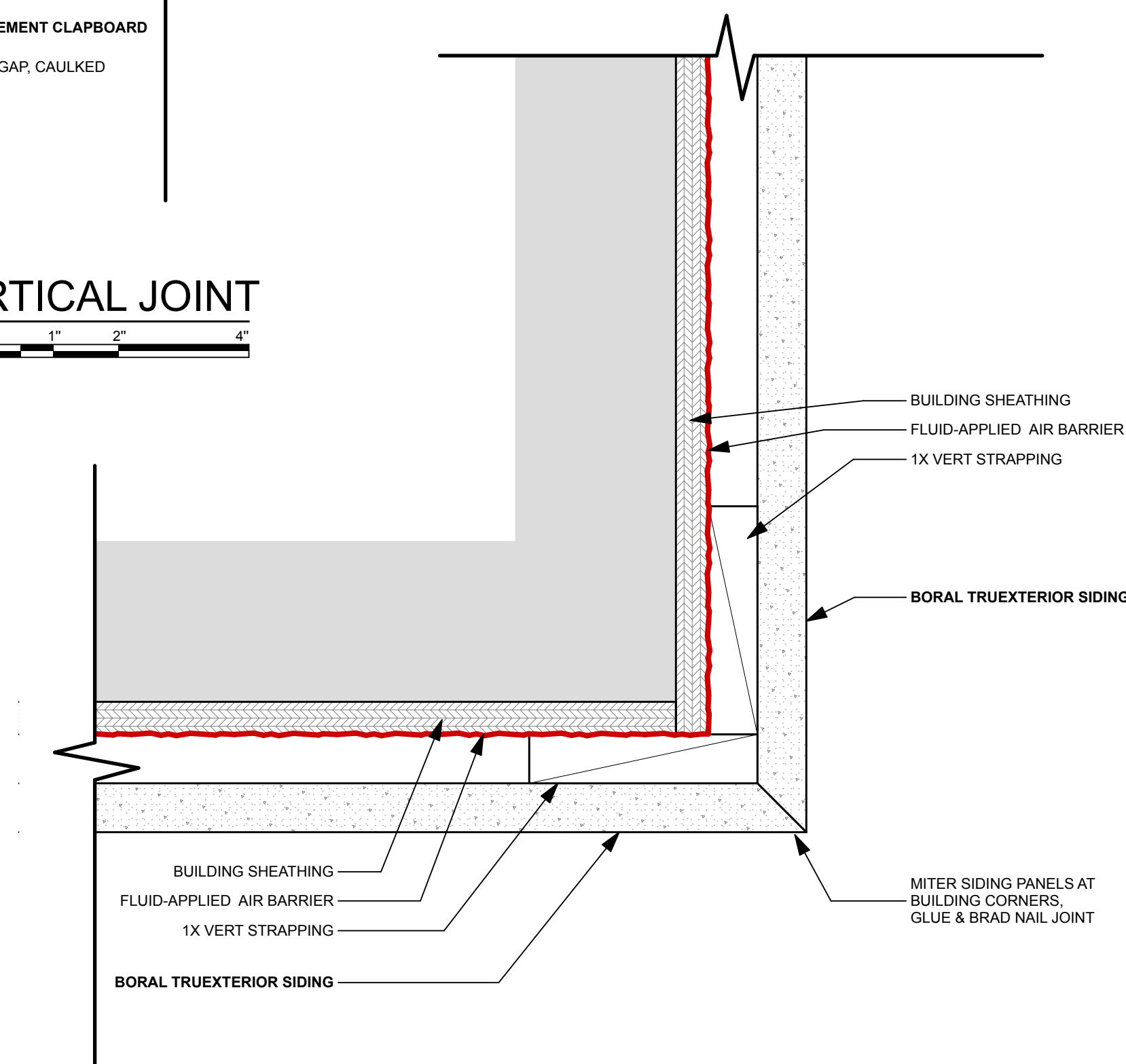
3 PANEL HORZ JOINT: THRU-WALL
SCALE: 6" = 1'-0"



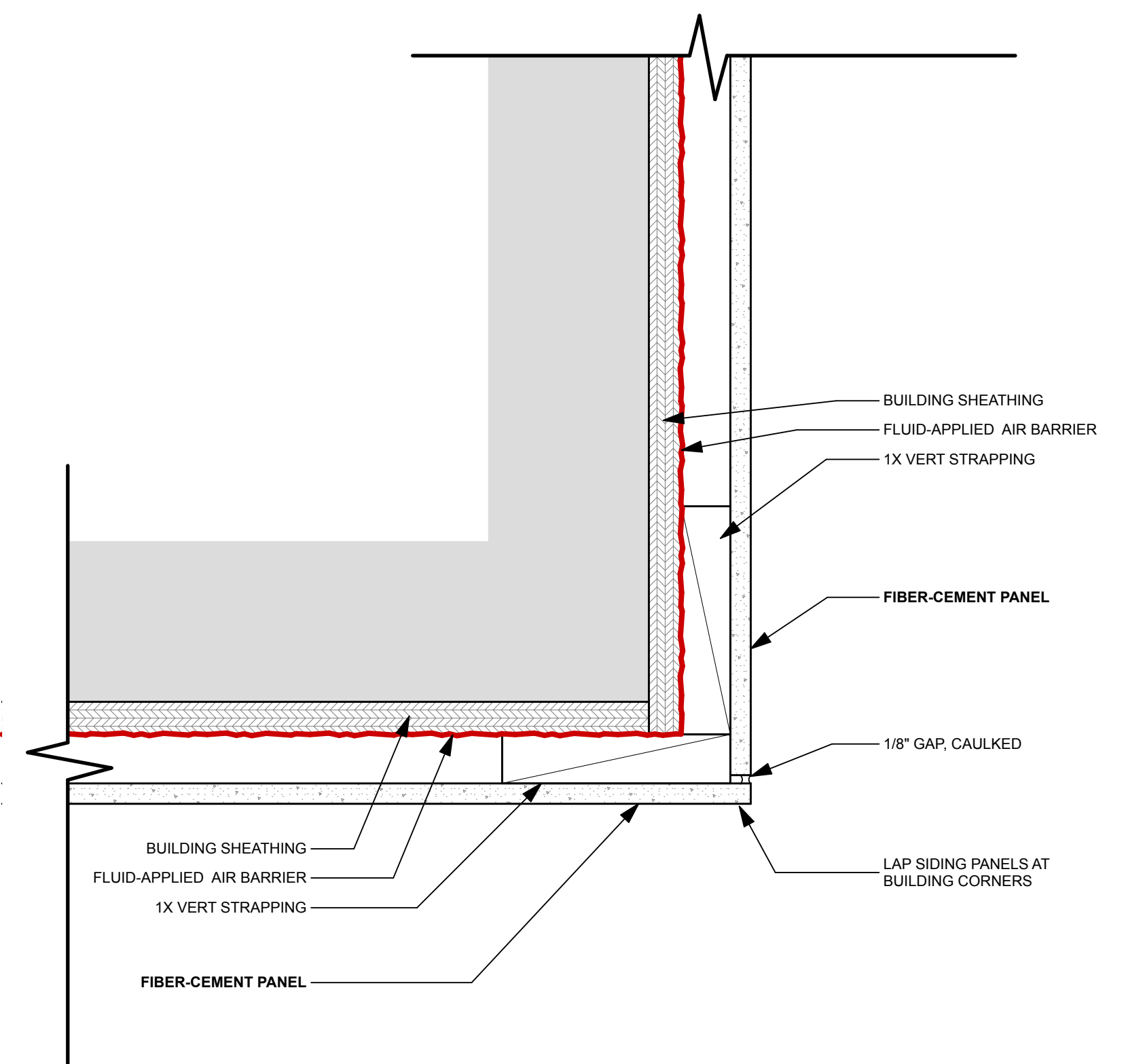
2 PANEL HORZ JOINT, TYP
SCALE: 6" = 1'-0"



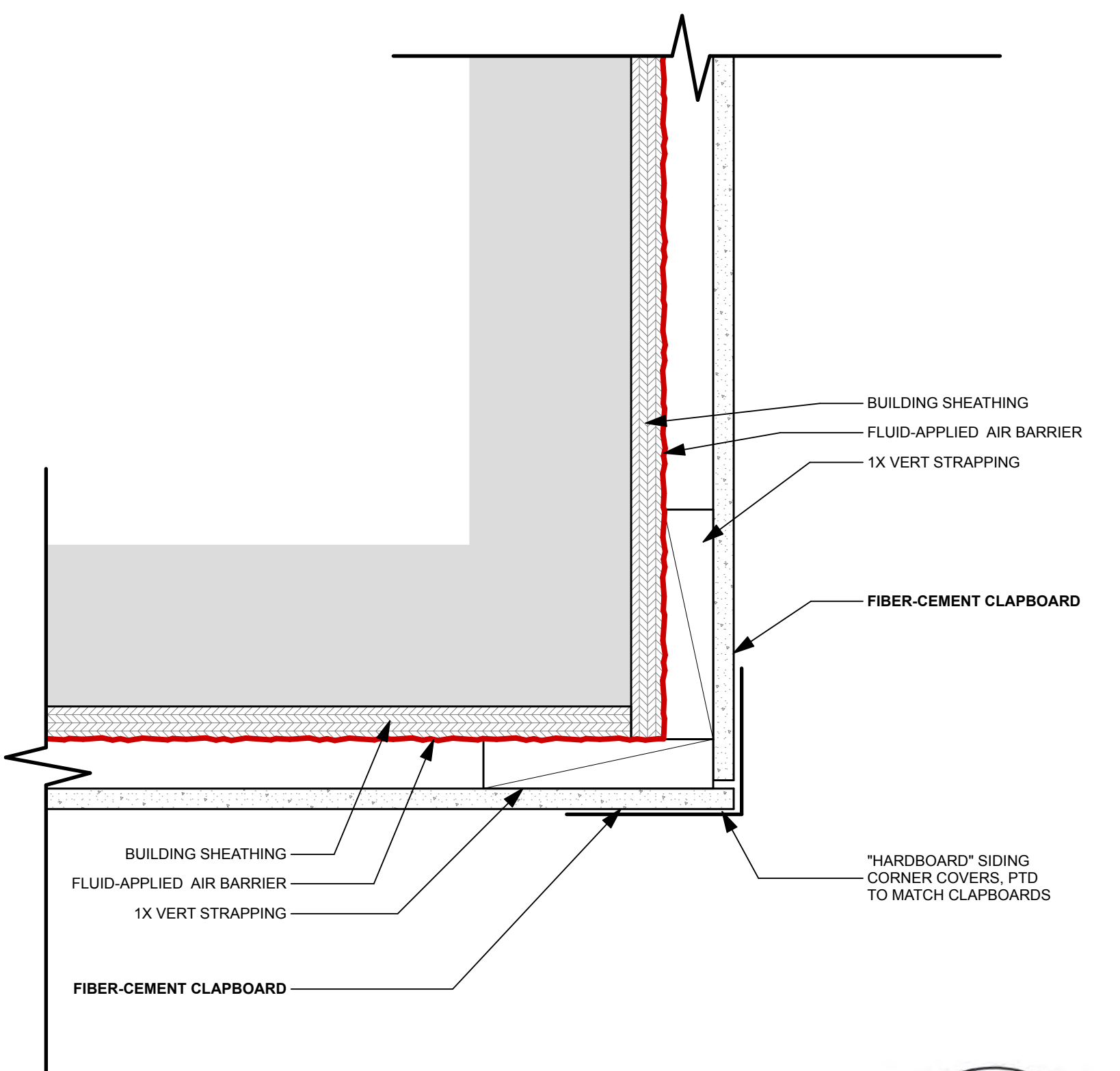
1 PANEL TO CLAP HORZ JOINT, TYP
SCALE: 6" = 1'-0"



10 SHIPLAP & CHANNEL VERT JOINT, TYP
SCALE: 6" = 1'-0"



9 PANEL CORNER VERT JOINT, TYP
SCALE: 6" = 1'-0"



8 CLAPBOARD CORNER VERT JOINT, TYP
SCALE: 6" = 1'-0"