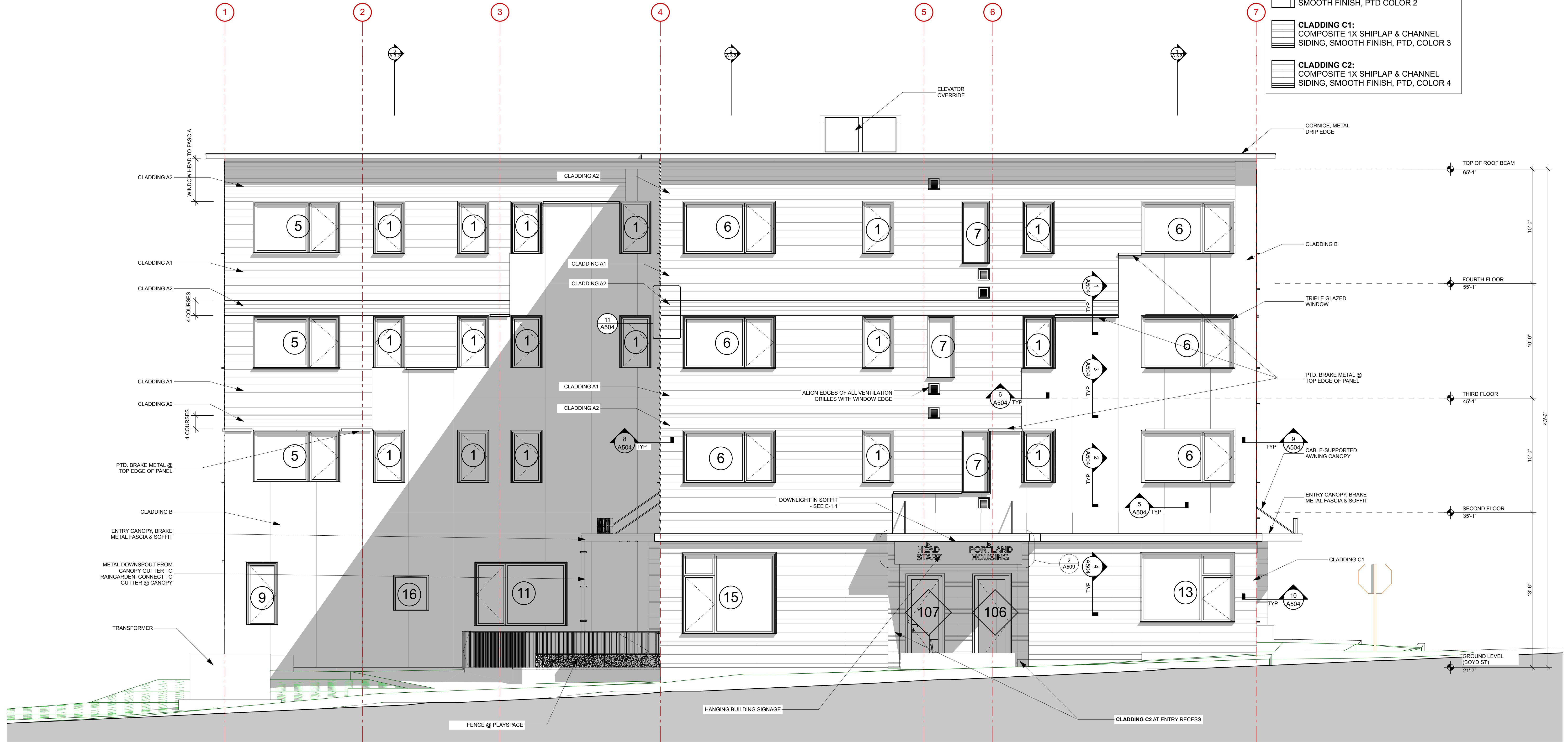
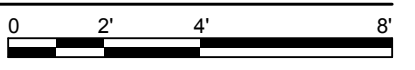


CLADDING KEYNOTE	
	<b>CLADDING A1:</b> FIBER CEMENT CLAPBOARDS, SMOOTH FINISH, 8" REVEAL, PTD COLOR 1
	<b>CLADDING A2:</b> FIBER CEMENT CLAPBOARDS, SMOOTH FINISH, 4" REVEAL, PTD COLOR 1
	<b>CLADDING B:</b> FIBER CEMENT PANEL, SMOOTH FINISH, PTD COLOR 2
	<b>CLADDING C1:</b> COMPOSITE 1X SHIPLAP & CHANNEL SIDING, SMOOTH FINISH, PTD, COLOR 3
	<b>CLADDING C2:</b> COMPOSITE 1X SHIPLAP & CHANNEL SIDING, SMOOTH FINISH, PTD, COLOR 4



2 **SOUTHWEST ELEVATION**  
SCALE: 1/4" = 1'-0"



**KAPLAN THOMPSON ARCHITECTS**  
424 FORE ST., PORTLAND, ME 04101  
207-842-2888

**PORTLAND HOUSING**  
14 BAXTER BLVD  
PORTLAND, ME 04101  
P: 207.773.4753

**AVESTA HOUSING**  
307 CUMBERLAND AVE  
PORTLAND, ME 04101  
P: 207.553.7777

**CARROLL ASSOCIATES LANDSCAPE ARCHITECTS**  
217 COMMERCIAL STREET, STE 200  
PORTLAND, MAINE 04101  
207.772.1552 V. F. 207.772.0712

**BECKER STRUCTURAL ENGINEERS**  
75 YORK ST.  
PORTLAND, ME 04101  
P: 207.879.1838

**RANSOM Consulting Engineers and Scientists**  
400 COMMERCIAL ST. SUITE 404  
PORTLAND, ME 04101  
P: 207.772.2891

**APEX ENGINEERING**  
190 US ROUTE ONE  
PMB 346 FALMOUTH, ME  
04105  
P: 207.847.3445

# PRICING DOCUMENTS

PROJECT:  
**BAYSIDE ANCHOR PHDC & AVESTA HOUSING**  
81 EAST OXFORD STREET  
PORTLAND, ME

DRAWING: 1/4" SW ELEVATION  
SCALE: 1/8" = 1'-0"  
DATE: 9/3/15

DRAWN BY: JJT  
REVISED:



# A203