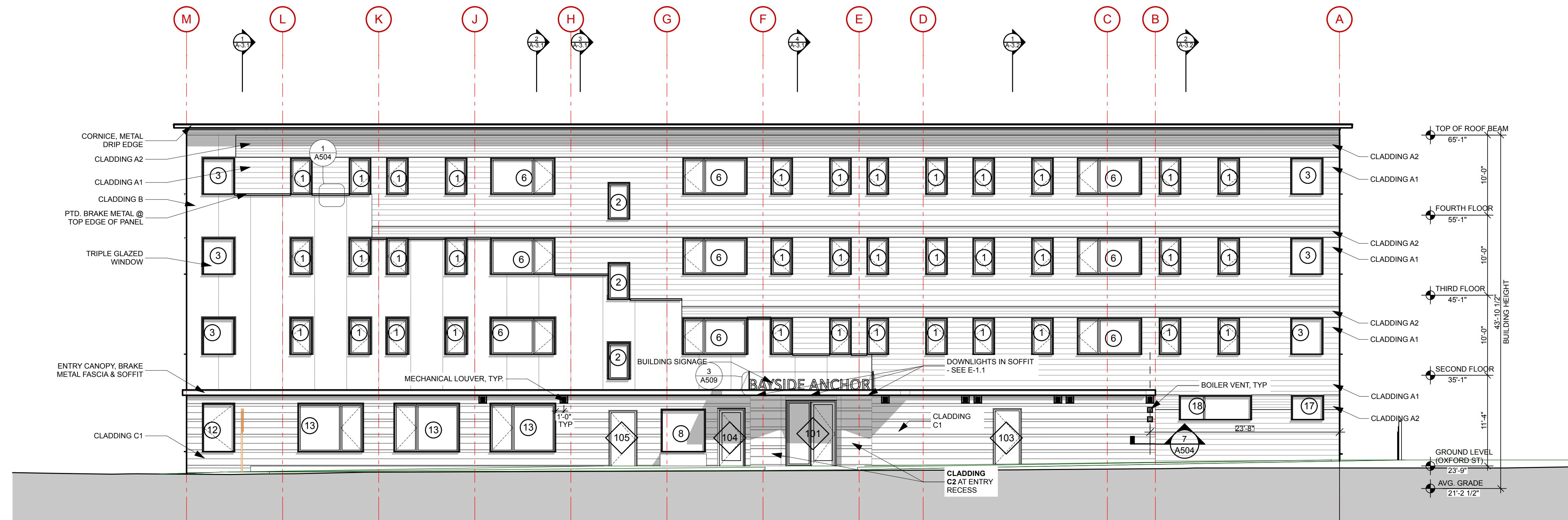


1 NORTHWEST ELEVATION
SCALE: 1/8" = 1'-0"



2 SOUTHEAST ELEVATION
SCALE: 1/8" = 1'-0"

CLADDING KEYNOTE

	CLADDING A1: FIBER CEMENT CLAPBOARDS, SMOOTH FINISH, 8" REVEAL, PTD COLOR 1
	CLADDING A2: FIBER CEMENT CLAPBOARDS, SMOOTH FINISH, 4" REVEAL, PTD COLOR 1
	CLADDING B: FIBER CEMENT PANEL, SMOOTH FINISH, PTD COLOR 2
	CLADDING C1: COMPOSITE 1X SHIPLAP & CHANNEL SIDING, SMOOTH FINISH, PTD, COLOR 3
	CLADDING C2: COMPOSITE 1X SHIPLAP & CHANNEL SIDING, SMOOTH FINISH, PTD, COLOR 4