

DESIGNER

CVS ARCHITECTS  
ARCHITECTURE | INTERIOR DESIGN  
264 US ROUTE ONE, SUITE 100-A  
SCARBOROUGH, MAINE 04074  
207.774.4441  
WWW.CWSARCH.COM

OWNER

58 BOYD STREET, LP  
14 BAKER BLVD  
PORTLAND, MAINE 04101

PROJECT

58 BOYD STREET APARTMENTS

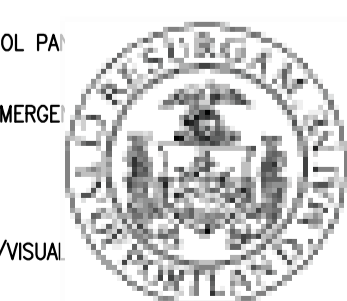
DRAWING

SIXTH FLOOR LIFE SAFETY PLAN  
CVS PROJECT NUMBER: 15.021

REVISIONS

NO.	DESCRIPTION

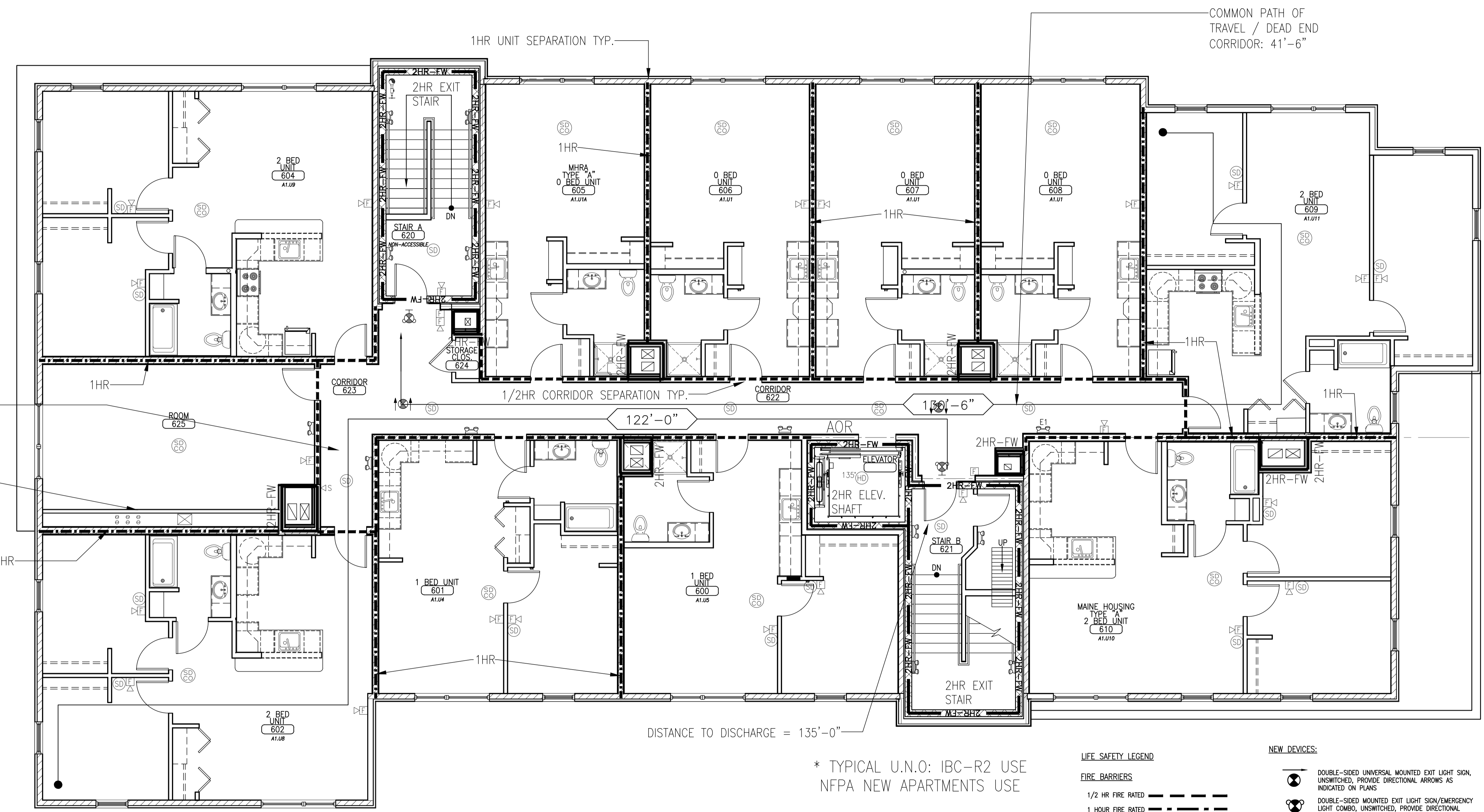
**CITY OF PORTLAND APPROVED SITE PLAN**  
Subject to Conditions of Approval and Standard Conditions



DATE of APPROVAL November 28, 2017

PLANNER Matthew Grooms

PROJECT NO. 2017-217



COMMON PATH OF TRAVEL / DEAD END CORRIDOR: 17'-0"

NON-RATED CHASE: DUCTS ARE FIRE DAMPER EQUIPPED

1HR UNIT SEPARATION TYP.

1/2HR CORRIDOR SEPARATION TYP.

COMMON PATH OF TRAVEL / DEAD END CORRIDOR: 41'-6"

122'-0"

130'-6"

DISTANCE TO DISCHARGE = 135'-0"

\* TYPICAL U.N.O: IBC-R2 USE NFPA NEW APARTMENTS USE

- LIFE SAFETY LEGEND**
- FIRE BARRIERS**
    - 1/2 HR FIRE RATED
    - 1 HOUR FIRE RATED
    - 2 HOUR FIRE RATED
  - FIRE WALLS**
    - 2 HOUR FIRE RATED
  - FIRE PARTITIONS**
    - 1 HOUR FIRE RATED
  - EXIT ACCESS TRAVEL DISTANCE

- NEW DEVICES:**
- DOUBLE-SIDED UNIVERSAL MOUNTED EXIT LIGHT SIGN, UNSWITCHED, PROVIDE DIRECTIONAL ARROWS AS INDICATED ON PLANS
  - DOUBLE-SIDED MOUNTED EXIT LIGHT SIGN/EMERGENCY LIGHT COMBO, UNSWITCHED, PROVIDE DIRECTIONAL ARROWS AS INDICATED ON PLANS
  - RECESSED FIRE EXTINGUISHER CABINET
  - WALL MOUNTED FIRE EXTINGUISHER
  - KNOX BOX
  - FIRE ALARM CONTROL PA
  - SELF CONTAINED EMERGE
  - SMOKE DETECTOR
  - FIRE ALARM AUDIO/VISUAL
  - FIRE ALARM VISUAL STROBE ONLY
  - SYSTEM CONNECTED SMOKE/CARBON MONOXIDE DETECTOR, PHOTOELECTRIC