

CWS ARCHITECTS
ARCHITECTURE | INTERIOR DESIGN
264 US ROUTE ONE, SUITE 100-A
SCARBOROUGH, MAINE 04074
207.774.4441
WWW.CWSARCH.COM

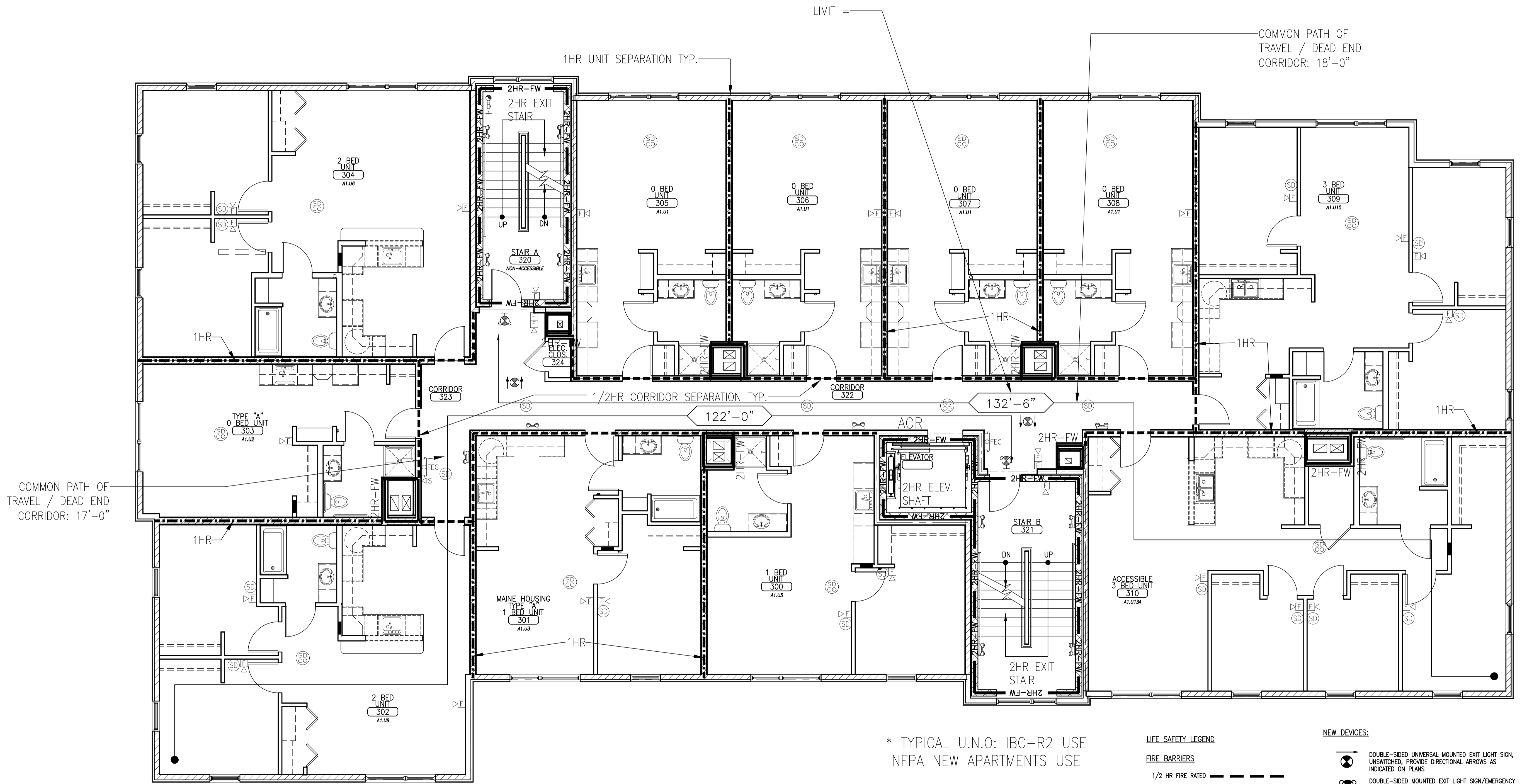
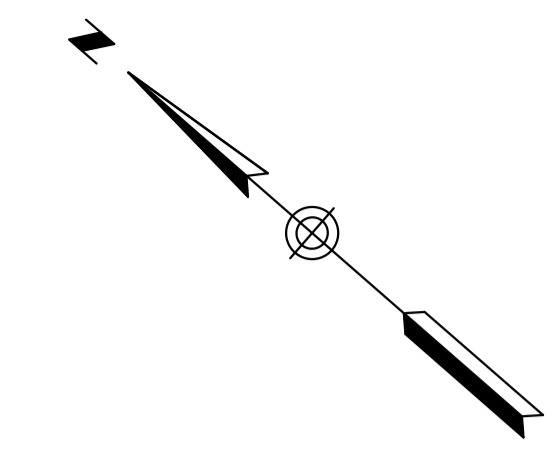
OWNER
58 BOYD STREET, LP
14 BAKER BLVD
PORTLAND, MAINE 04101

PROJECT
58 BOYD STREET APARTMENTS
58 BOYD STREET
PORTLAND, MAINE 04101

DRAWING
THIRD FLOOR LIFE SAFETY PLAN
CWS PROJECT NUMBER: 15.021

REVISIONS

NO.	DESCRIPTION



COMMON PATH OF TRAVEL / DEAD END CORRIDOR: 17'-0"

COMMON PATH OF TRAVEL / DEAD END CORRIDOR: 18'-0"

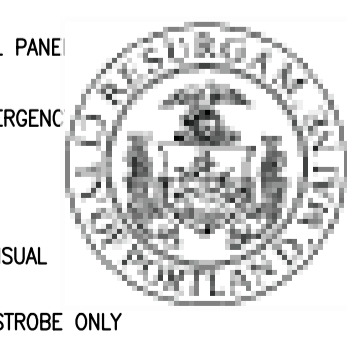
1HR UNIT SEPARATION TYP.

1/2HR CORRIDOR SEPARATION TYP.

* TYPICAL U.N.O: IBC-R2 USE
NFPA NEW APARTMENTS USE

- LIFE SAFETY LEGEND**
- FIRE BARRIERS**
- 1/2 HR FIRE RATED
 - 1 HOUR FIRE RATED
 - 2 HOUR FIRE RATED
- FIRE WALLS**
- 2 HOUR FIRE RATED 2HR-FW
- FIRE PARTITIONS**
- 1 HOUR FIRE RATED 1HR-FP
- EXIT ACCESS TRAVEL DISTANCE

- NEW DEVICES:**
- DOUBLE-SIDED UNIVERSAL MOUNTED EXIT LIGHT SIGN, UNSWITCHED, PROVIDE DIRECTIONAL ARROWS AS INDICATED ON PLANS
 - DOUBLE-SIDED MOUNTED EXIT LIGHT SIGN/EMERGENCY LIGHT COMB, UNSWITCHED, PROVIDE DIRECTIONAL ARROWS AS INDICATED ON PLANS
 - RECESSED FIRE EXTINGUISHER CABINET
 - WALL MOUNTED FIRE EXTINGUISHER
 - KNOX BOX
 - FIRE ALARM CONTROL PANE
 - SELF CONTAINED EMERGENCY LIGHT
 - SMOKE DETECTOR
 - FIRE ALARM AUDIO/VISUAL
 - FIRE ALARM VISUAL STROBE ONLY
 - SYSTEM CONNECTED SMOKE/CARBON MONOXIDE DETECTOR, PHOTOELECTRIC



CITY OF PORTLAND
APPROVED SITE PLAN
Subject to Conditions of Approval
and Standard Conditions

DATE of APPROVAL November 28, 2017

PLANNER Matthew Grooms

PROJECT NO. 2017-217