

C VS ARCHITECTS
ARCHITECTURE | INTERIOR DESIGN
264 US ROUTE ONE, SUITE 100-A
SCARBOROUGH, MAINE 04074
207.774.4441
WWW.CVSARCH.COM

DESIGNER
OWNER
58 BOYD STREET, LP
14 BAKER BLVD
PORTLAND, MAINE 04101

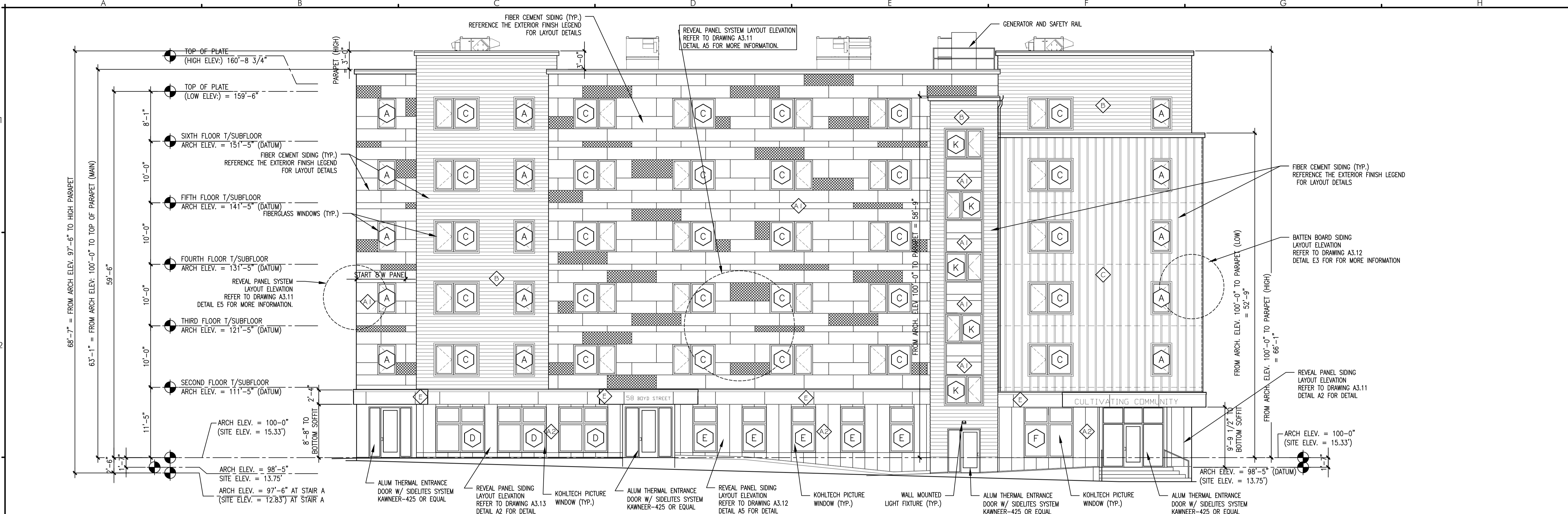
PROJECT
58 BOYD STREET APARTMENTS
58 BOYD STREET
PORTLAND, MAINE 04101

DRAWING
BUILDING ELEVATIONS
CWS PROJECT NUMBER: 15.021

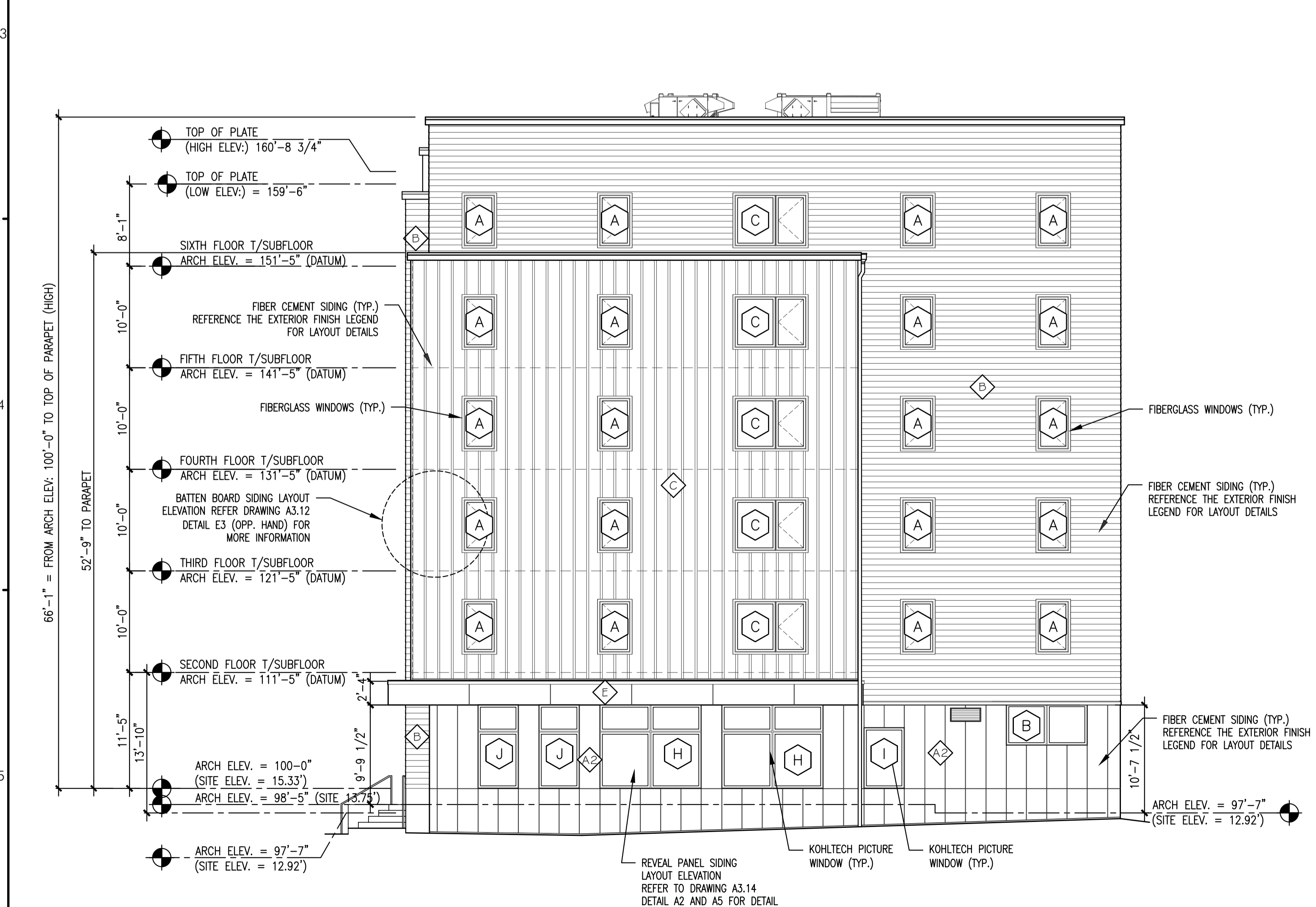
REVISIONS

CITY OF PORTLAND
APPROVED SITE PLAN
Subject to Conditions of Approval
and Standard Conditions

DATE of APPROVAL November 28, 2017
PLANNER Matthew Grooms
PROJECT NO. 2017-217
SCALE: 1/8" = 1'-0"
DATE: 11/01/2018



A3 NORTHEAST ELEVATION



A5 NORTHWEST ELEVATION

EXTERIOR FINISH MATERIAL LEGEND

Wind Load Siding Fastening Schedule		65 FT Building Height Façade Pressures	
Components % of Cladding per ASCE 7-05		7' from Corners	Building Centers
L	Pressure (ULT)	38 PSF	38 PSF
O	Suction (ASD)	-42 PSF	-23 PSF
A	Suction (ULT)	-69 PSF	-38 PSF
A	Design Wind Speed	118 mph	
D	Wind Load Importance Factor (Iw)		1
	Wind Exposure		C
	Internal Pressure Coefficient		0.18

SYSTEM	SIDING SYSTEM COMPONENTS & FASTENING SCHEDULE (Review and confirm all fastening systems with siding manufacturer)	Pattern
FLOORS 2 through 6 (panel system where indicated)		
A1	SIDING SYSTEM A1 Hardie Reveal Panel System - 5/16" Smooth Face w/ Surround Trim Factory Primed and Field Painted: A1a - SW7642 Pavestone, Satin A1b - SW7643 Pussyswillow, Satin	SW7642 PAVESTONE SW7643 PUSSYSWILLOW
A2	SIDING SYSTEM A2 Hardie Reveal Panel System - 5/16" Smooth Face w/ Surround Trim Factory Primed and Field Painted: A2 - SW7068 Grizzle Grey, Semi-Gloss	SW7068 GRIZZLE GREY
FLOORS 2 through 6 (horizontal siding where indicated)		
B	SIDING SYSTEM B Hardie Horizontal Lap Siding - 5/16", 8.25" Smooth Face 7" Exposure Factory Primed and Field Painted: B - SW6250 Granite Peak, Satin	SW6250 GRANITE PEAK
FLOORS 2 through 6 (vertical siding where indicated)		
C	SIDING SYSTEM C Hardie Vertical Siding - 5/16" Smooth Face Panel with 3/4"x2 1/2" Batten Factory Primed and Field Painted: C - SW7577 Blackberry, Satin	SW7577 BLACKBERRY
FLOOR 1 (ALTERNATE 01 panel system to SYSTEM A)		
D	SIDING SYSTEM D Hardie Reveal Panel System - 7/16" with Recess Trim Factory Primed and Field Painted: D - SW7068 Grizzle Grey, Semi-Gloss	SW7068 GRIZZLE GREY
FLOORS 1 (canopy overhangs where indicated)		
E	SIDING SYSTEM E (horizontal band where indicated) Hardie Reveal Panel System - 5/16" with Surround Trim Factory Primed and Field Painted: SW7643 Pussyswillow, Satin	SW7643 PUSSYSWILLOW

Notes: 1. Provide Tamper Resistant Screw Heads at all panels below the second finish floor.
2. Provide corrosion resistant fasteners treated for priming/painting as scheduled.
3. Pre-drill fastener holes through fibercement panels where pan head screws are specified.

E5 EXTERIOR FINISH MATERIAL LEGEND