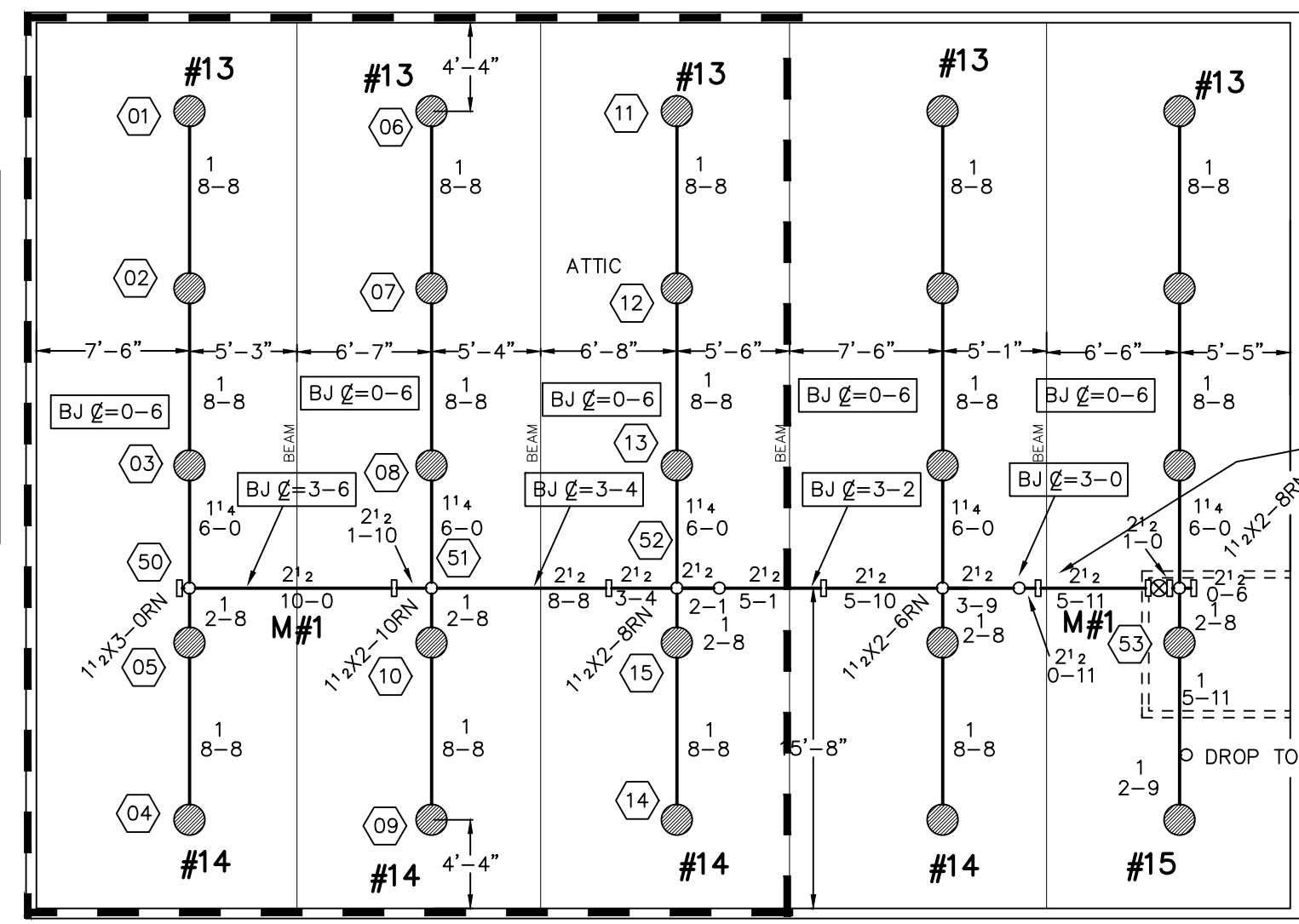
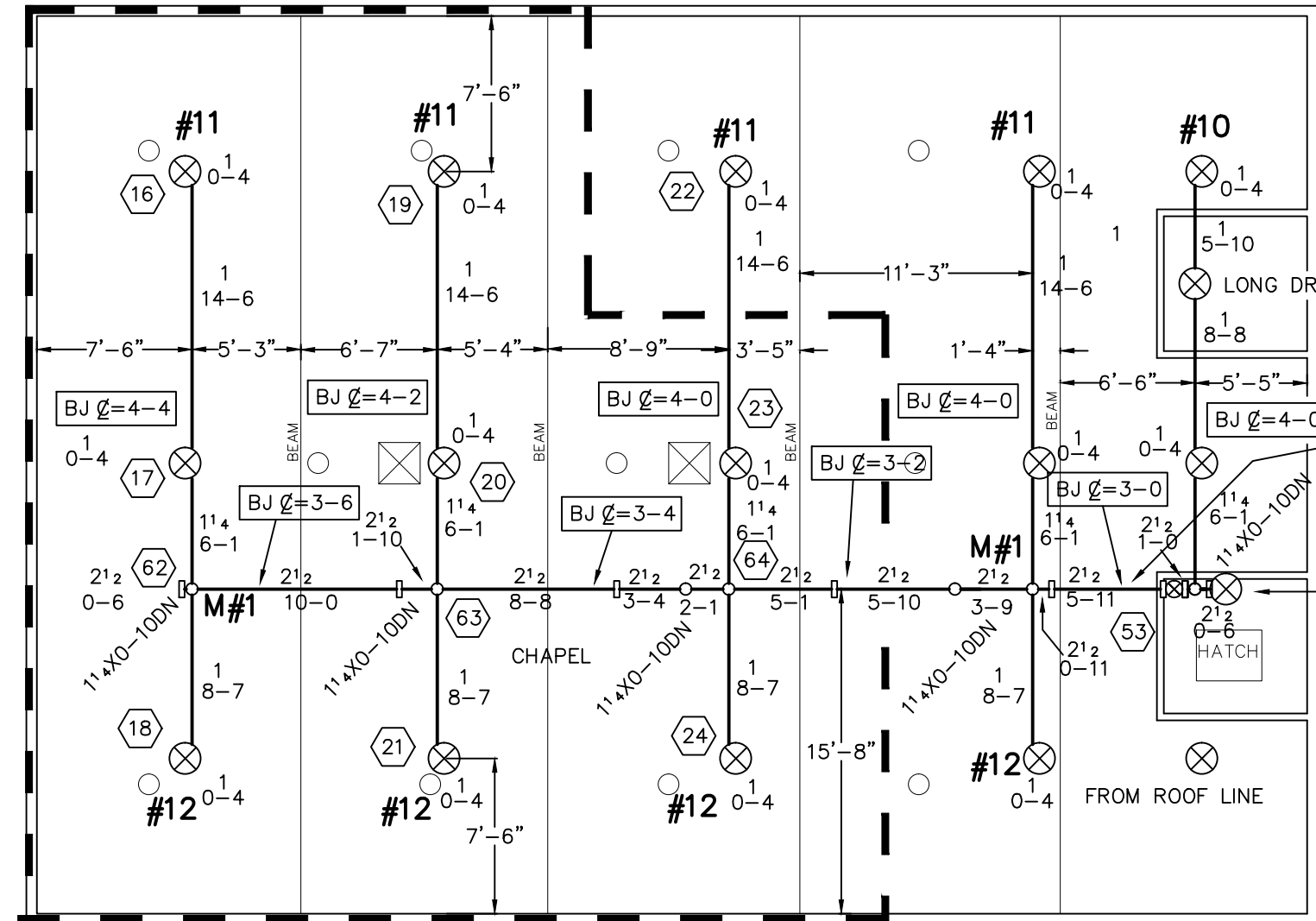


CALC: JEWISHMUSEUMATTIC.WXF
HYDRAULIC DATA:
BASIS OF DESIGN: LIGHT HAZARD
DENSITY 0.10 AREA OF COVERAGE 1500 SQ FT
TOTAL ORIFICE TEMP 200°
SPRINKLERS 15 1/2"
SYSTEM DEMAND AT CITY: PRESSURE 72.7 FLOW 249.9 HOSE 100
SAFETY MARGIN 8.8 PSI
OCCUPANCY: ATTIC

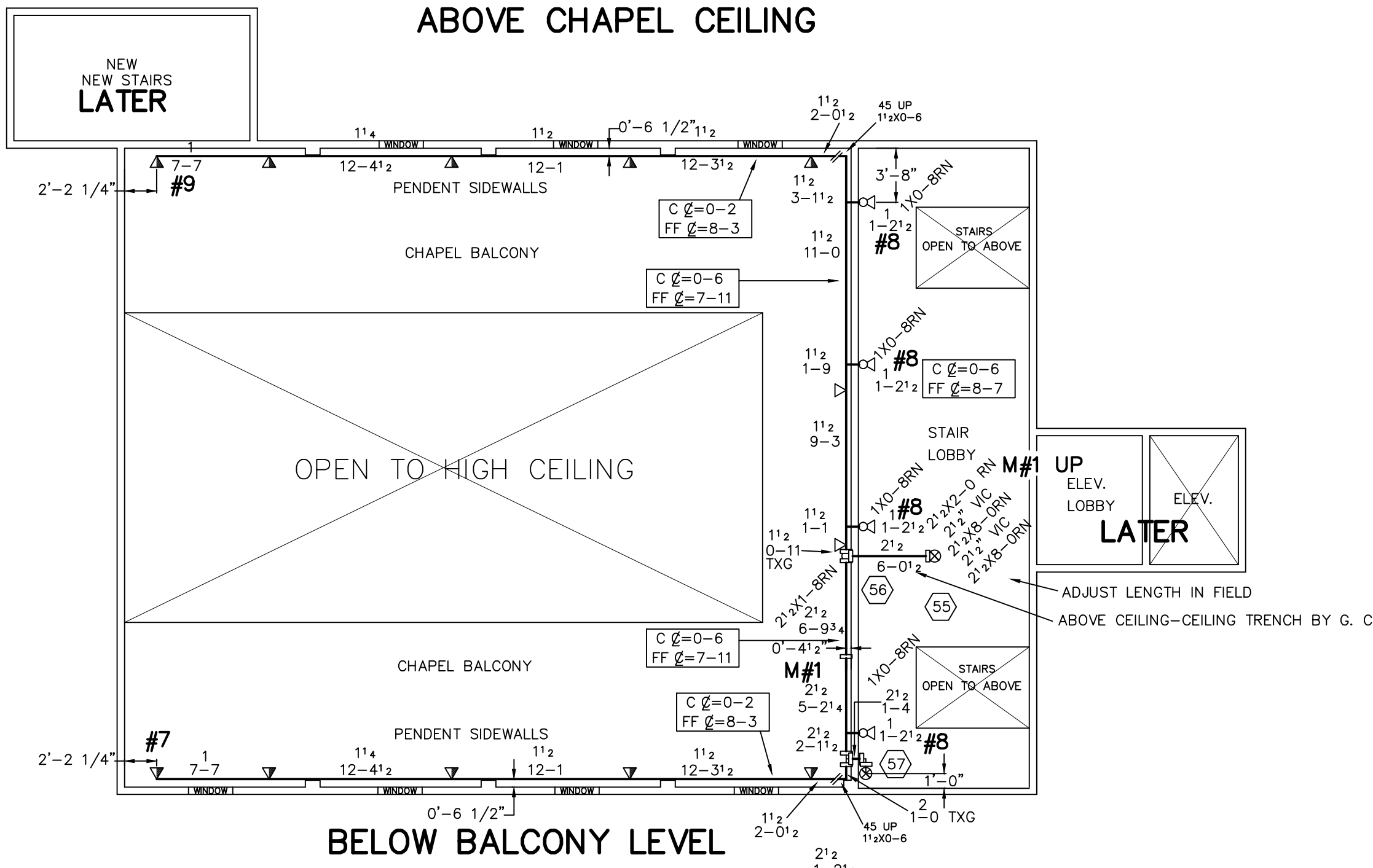


ATTIC

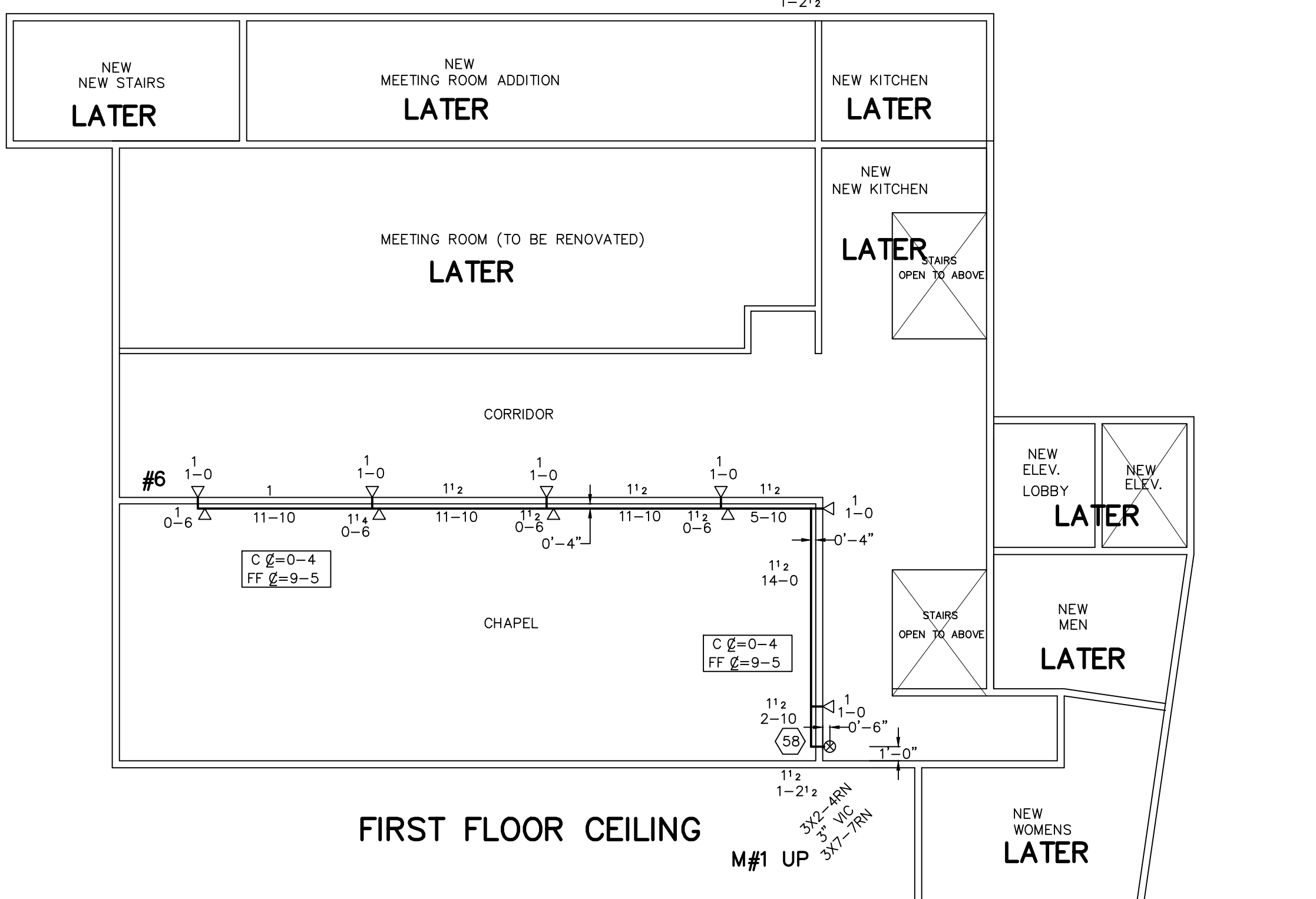
CALC: JEWISHMUSEUMCHAPEL.WXF
HYDRAULIC DATA:
BASIS OF DESIGN: LIGHT HAZARD
DENSITY 0.10 AREA OF COVERAGE 1500 SQ FT
TOTAL ORIFICE TEMP 155°
SPRINKLERS 8 1/2"
SYSTEM DEMAND AT CITY: PRESSURE 69.0 FLOW 191.4 HOSE 100
SAFETY MARGIN 10.6 PSI
OCCUPANCY: CHAPEL



ABOVE CHAPEL CEILING

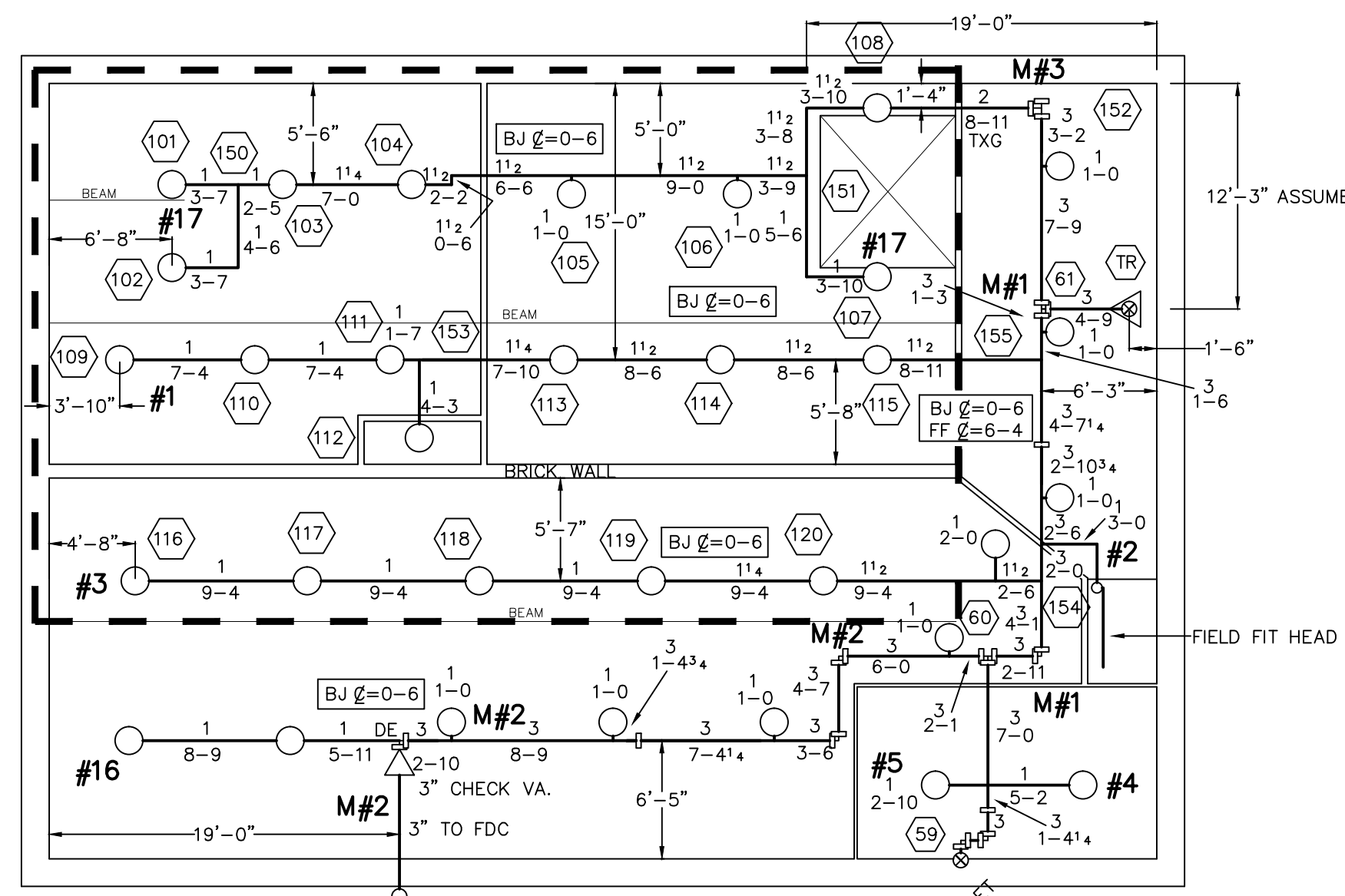


BELOW BALCONY LEVEL

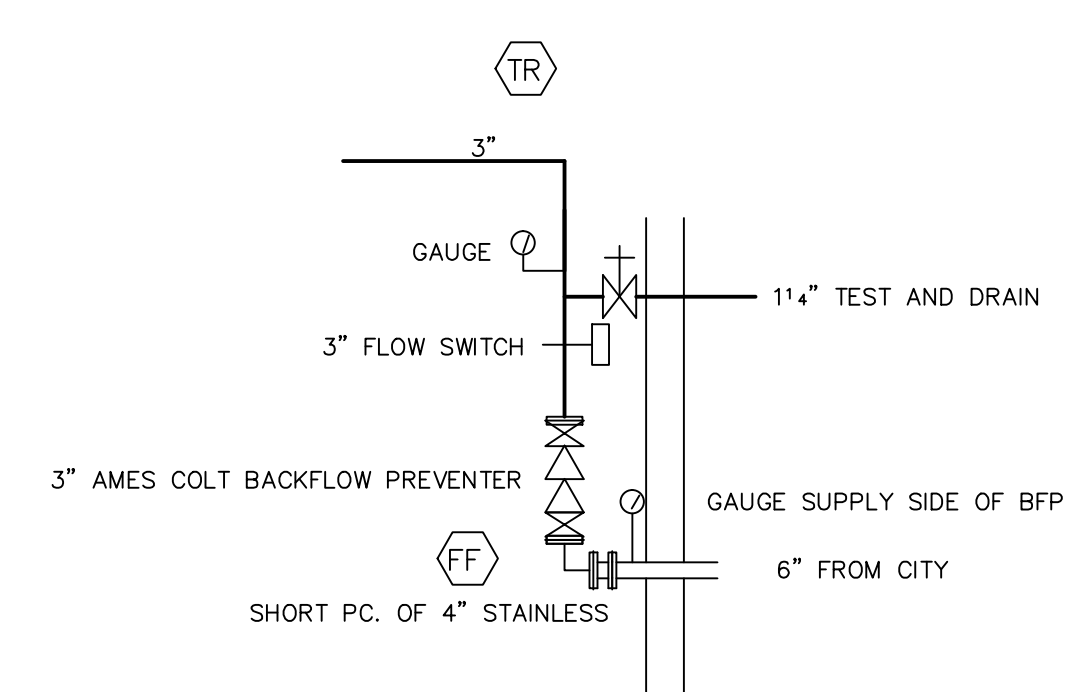


FIRST FLOOR CEILING

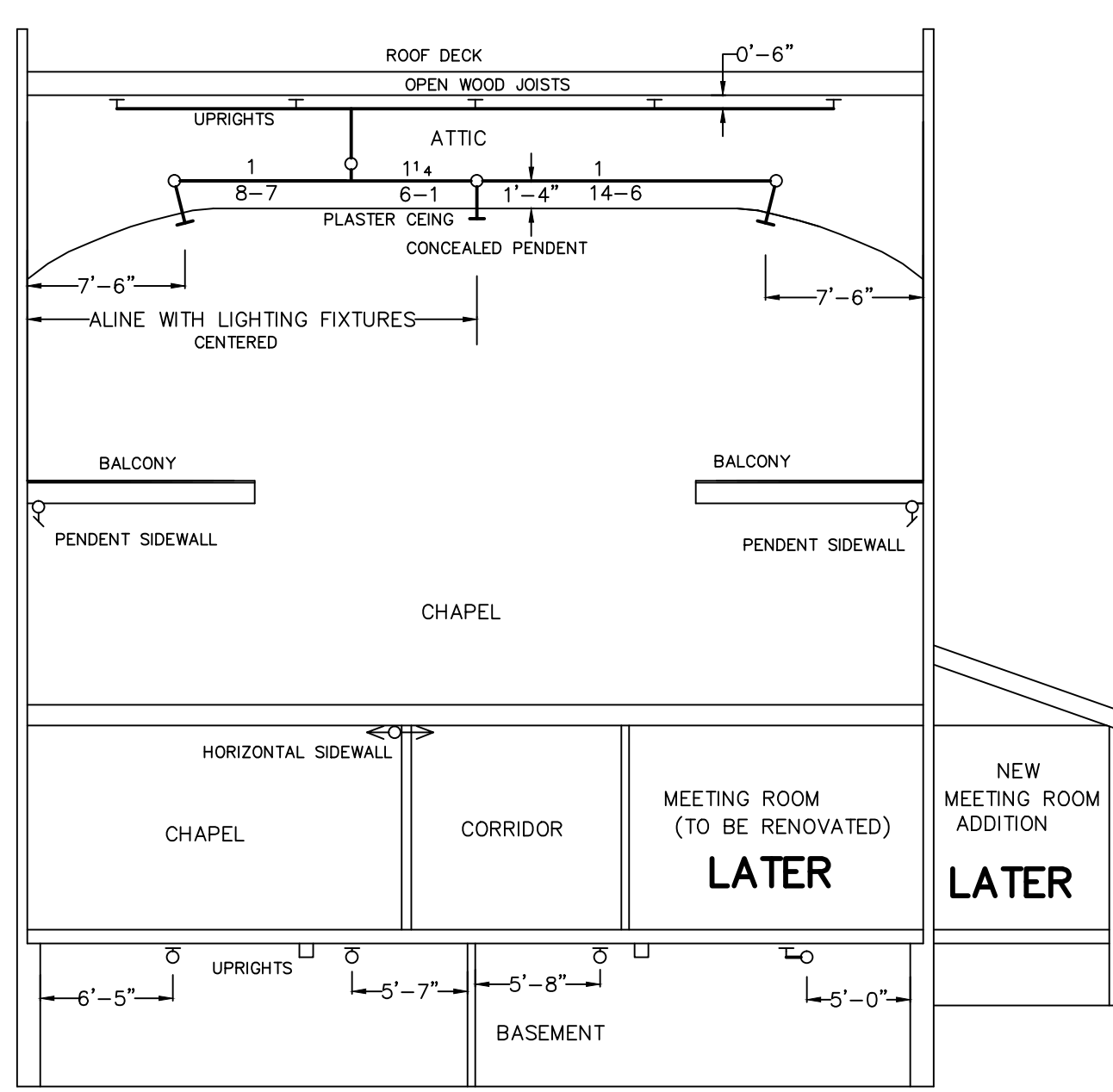
CALC: JEWISHMUSEUMBASMENT.WXF
HYDRAULIC DATA:
BASIS OF DESIGN: ORDINARY HAZARD
DENSITY 0.15 AREA OF COVERAGE 1500 SQ FT
TOTAL ORIFICE TEMP 155°
SPRINKLERS 20 1/2"
SYSTEM DEMAND AT CITY: PRESSURE 65.3 FLOW 495.5 HOSE 250
SAFETY MARGIN 12.6 PSI
OCCUPANCY: BASEMENT



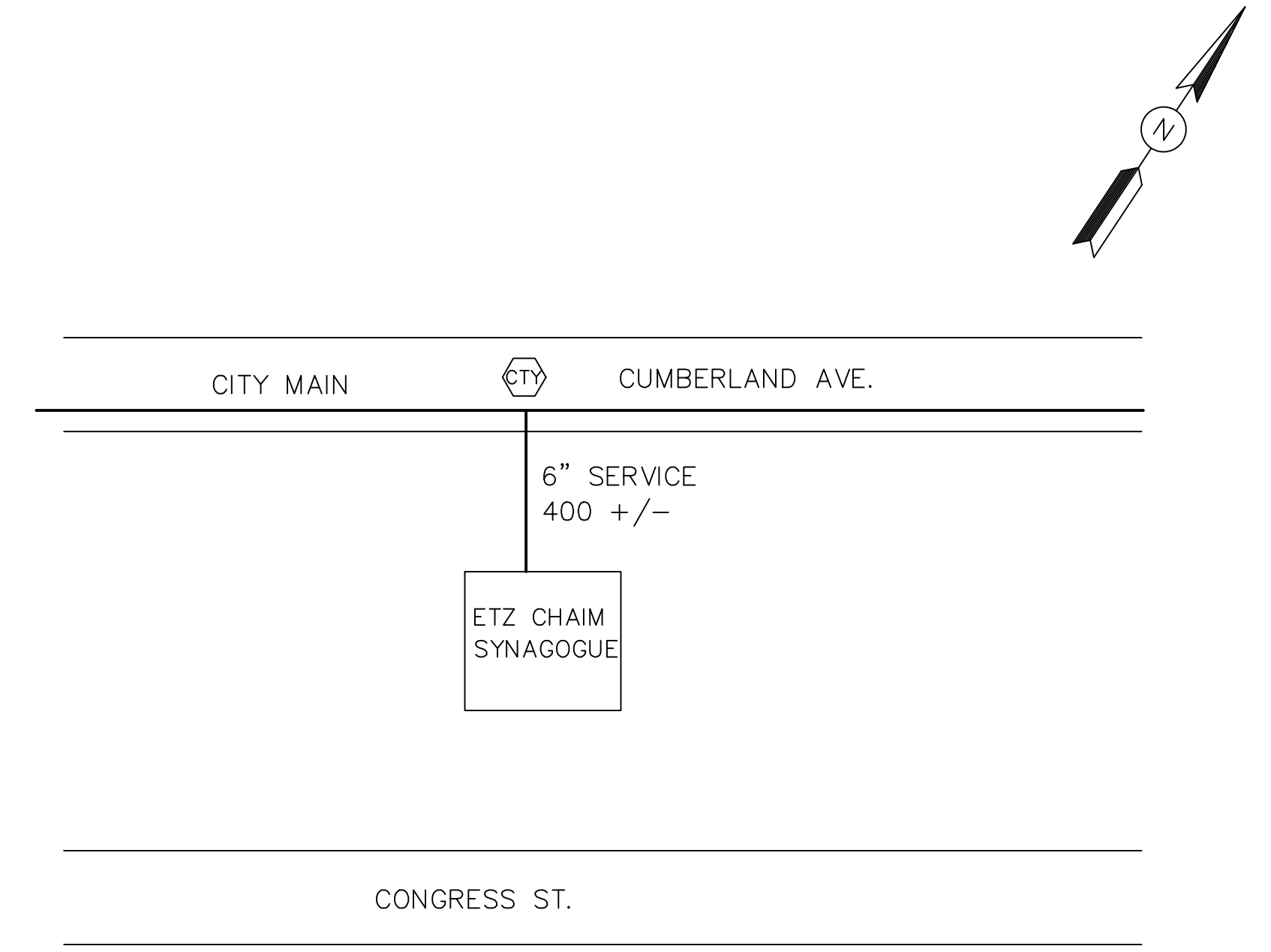
BASEMENT



RISER SECTION
NO SCALE



BUILDING SECTION



LOCATION PLAN
NO SCALE

- LEGEND**
- 200" RELIABLE F1FR56 Q R BRASS UPRIGHTS K=5.6
 - 155" RELIABLE F1FR56 Q R BRASS UPRIGHTS K=5.6
 - ◁ 155" RELIABLE F1FR56 Q R PENDENT WHITE SIDEWALL K=5.6
 - ◁ 155" RELIABLE F1FR56 Q R HORIZONTAL WHITE SIDEWALL K=5.6
 - ⊗ 155" RELIABLE G4A Q R WHITE CONCEALED PENDENT SPRINKLER K=5.6
 - C℄=XX CEILING TO CENTERLINE OF PIPE
 - FF℄=XX FIN FLR TO CENTERLINE OF PIPE
 - BJ℄=XX BOTTOM OF JOISTS TO CENTERLINE OF PIPE
 - RISE OR DROP NIPPLE
 - ◆ RISER BETWEEN FLOORS

SYSTEM CLASSIFICATION
INSTALL A NEW WET PIPE NFPA #13 HYDRAULICALLY CALCULATED SPRINKLER SYSTEM IN ALL AREAS OF THE BUILDING TO MEET THE STANDARDS OF NFPA FOR LIGHT HAZARD, THE STATE OF MAINE, AND THE CITY OF PORTLAND.

- GENERAL NOTES**
- 31 RELIABLE F1FR BRASS UPRIGHTS 1/2"x1/2" K=5.6
 - 25 RELIABLE F1FR BRASS UPRIGHTS 1/2"x1/2" K=5.6
 - 16 RELIABLE F1FR HORIZONTAL WHITE SIDEWALL 1/2"x1/2" K=5.6
 - 10 RELIABLE F1FR PENDENT WHITE SIDEWALL 1/2"x1/2" K=5.6
 - 17 RELIABLE G4A PENDENT WHITE CONCEALED 1/2"x1/2" K=5.6

DEAN & ALLYN, INC.
FIRE PROTECTION • SPECIAL HAZARD
PO BOX 709, GRAY, MAINE 04039
(207)657-5646 FAX: (207)657-5647

REVISIONS	DATE	APPROVED BY	DATE	SURVEYED BY	HAK	2-6-14	TITLE

**MAINE JEWISH MUSEUM
ETZ CHAIM SYNAGOGUE
267 CONGRESS STREET
PORTLAND MAINE**

NO OF SPRINKLERS SHOWN ON THIS SHEET 99
NO OF SPRINKLERS ON JOB 99
CONTRACT NO. C141184