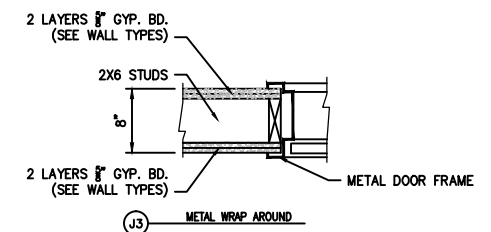
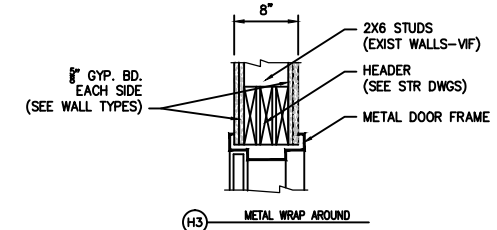
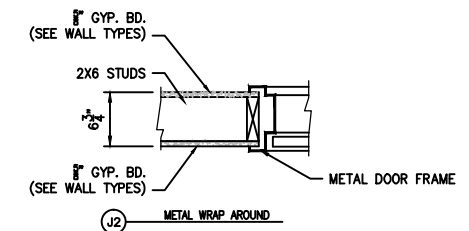
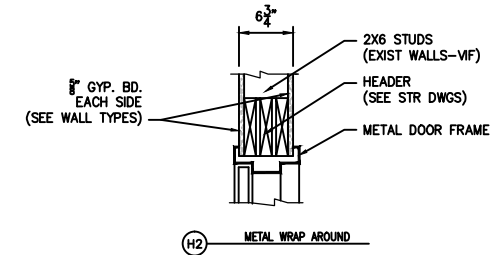
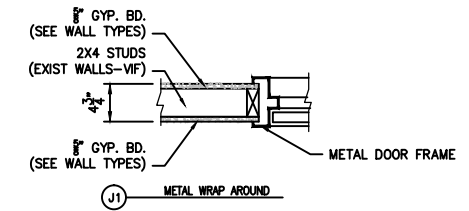
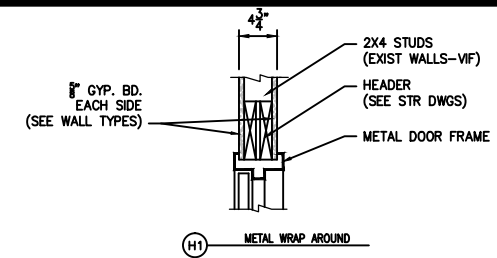


# DOOR SCHEDULE

## DOOR SCHEDULE ABBREVIATIONS

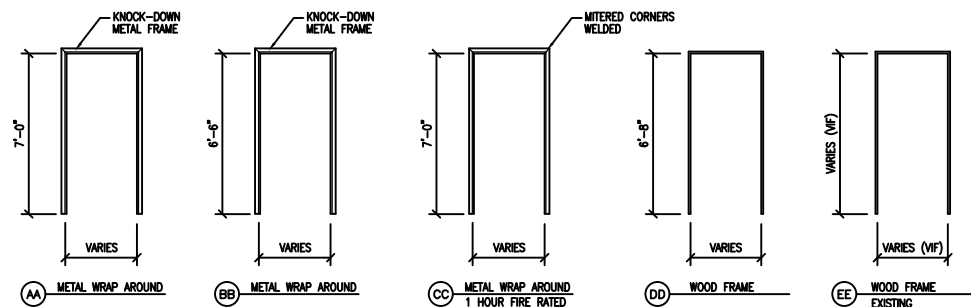
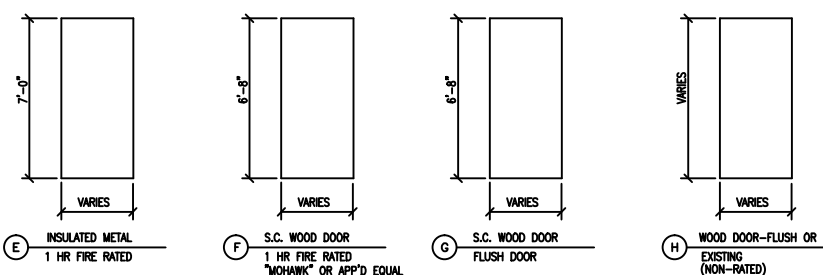
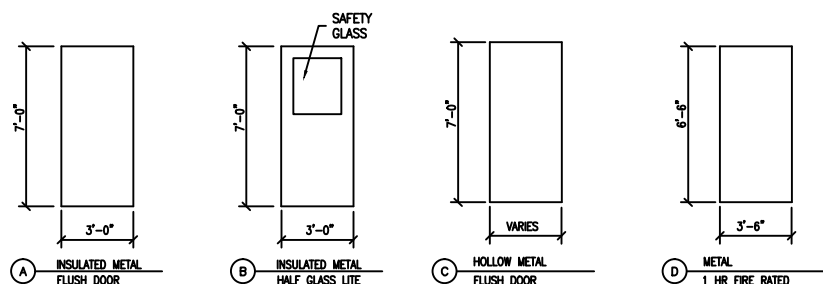
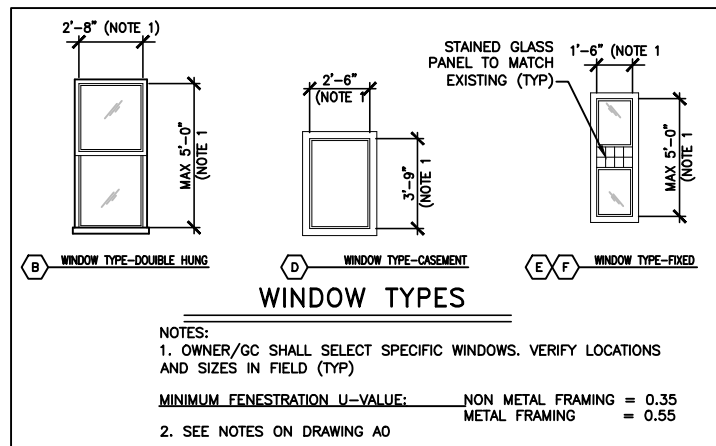
CLO. CLOSER	HM HOLLOW METAL	S.C. SOLID CORE HARDBOARD
DSI DOOR SILENCERS	INS INSULATED	S.H. SPRING HINGE
D.S. DOOR SWEEP (SOUNDPROOFING)	K KICKPLATE (PUSH SIDE)	S.J. SPLIT JAMB (WOOD)
DST DOOR STOP	KL KEY LOCK	TEMP TEMPERED
EHO ELECTRO. HOLD OPENER	MTL METAL	TL THUMB LATCH
ES ELECTRIC STRIKE	NO NUMBER	THK THICKNESS
F.J.P. FINGER JOINTED PRIMED	PS PASSAGE SET	UC UNDERCUT
FR FIRE RATED	P.H. FIRE EXIT PANIC HARDWARE (NOTE 4)	WD WOOD (SOLID)
HA HANDICAP ACCESSIBLE	P.P. PUSH PADDLE	WG WIRE GLASS
HC HOLLOW CORE HARDBOARD	PVS PRIVACY SET	V VIEWER
HDWE HARDWARE	S. STEEL	VIF VERIFY IN FIELD



MARK	TYPE	SIZE	THK.	F.R.	HDWE SET	MAT.	GLASS		REMARKS	FRAME TYPES		THRESHOLD			REMARKS			
							SIZE	TYPE		TYPE	MAT.	F.R.	DETAILS	MAT.		DETAIL		
												HEAD	JAMB	SILL	HT.			
01	NOT USED																	
02	D	3'-0" x 6'-6"	1 3/4"	1 HOUR	LEVER	METAL	-	-	FR, CLO, PS, KL (NOTE 1), DST (LOW HEADROOM-VERIFY IN FIELD) NO KEY REQ'D ON MACHINE ROOM SIDE	CC	METAL	1 HOUR	H2	J2	-	-	-	-
101	H	PR 3'-0" x 7'-0"	1 3/4"	-	PANIC BAR/PUSH PAD	WOOD	-	-	HA, KL, (EXISTING WOOD PANEL DOORS - FIT W/PANIC HDWE, NO CENTER MULLION) (VF)	EE	WOOD		EXISTING	EXISTING	ALUMINUM	EXISTING	-	EXISTING (VIF)
102	F	3'-0" x 7'-0"	1 3/4"	1 HOUR	FIRE EXIT PANIC HDWE	WOOD	-	-	FR, HA, PH, CLO, DS (NOTE 1)	CC	METAL	1 HOUR	H1	J1	-	-	-	NOTE 4 EXISTING WALL (VIF)
103	F	3'-0" x 7'-0"	1 3/4"	1 HOUR	FIRE EXIT PANIC HDWE	WOOD	-	-	FR, HA, PH, CLO, DS (NOTE 1)	CC	METAL	1 HOUR	H1	J1	-	-	-	NOTE 4
104	F	PR 3'-0" x 7'-0"	1 3/4"	1 HOUR	FIRE EXIT PANIC HDWE	WOOD	-	-	FR, HA, PH, CLO, DS (NOTE 1)	CC	METAL	1 HOUR	H1	J1	-	-	-	NOTE 4 EXISTING WALL (VIF)
105	NOT USED																	
106	E	3'-0" x 7'-0"	1 3/4"	1 HOUR	LEVER	METAL	-	-	FR, INS, HA, CLO, KL	CC	METAL	1 HOUR	H1	J1	-	-	-	-
107	G	3'-0" x 7'-0"	1 3/4"	-	LEVER	WOOD	-	-	HA, PS, CLO, DSI, DS, DST	BB	METAL		H1	J1	-	-	-	-
108	G	3'-0" x 7'-0"	1 3/4"	-	LEVER	WOOD	-	-	HA, PS, CLO, DSI, DS, DST	BB	METAL				-	-	-	-
109	H	3'-0" x 7'-0"	1 3/4"	-	FIRE EXIT PANIC HDWE	METAL	-	-	INS, HA, PH, CLO, KL (EXISTING DOOR - FIT W/PANIC HDWE & OUTWARD SWING) (VF)	AA	METAL	-			ALUMINUM	EXISTING	-	NOTE 4, EXISTING (VIF)
110	B	3'-0" x 7'-0"	1 3/4"	-	FIRE EXIT PANIC HDWE	METAL	HALF	SAFETY GLASS	INS, HA, PH, CLO, KL	AA	METAL	-	H1	J1	ALUMINUM	-	1/2" MAX	ADA COMPLIANT, NOTE 4
111	F	3'-6" x 7'-0"	1 3/4"	1 HOUR	FIRE EXIT PANIC HDWE	METAL	-	-	FR, HA, PH, EHO, CLO, DS, DST (NOTE 1)	CC	METAL	1 HOUR	H1	J1	-	-	-	NOTE 4
112	F	3'-0" x 7'-0"	1 3/4"	1 HOUR	FIRE EXIT PANIC HDWE	WOOD	-	-	FR, HA, PH, CLO, DS	CC	METAL	1 HOUR	H1	J1	-	-	-	NOTE 4
113	F	3'-0" x 7'-0"	1 3/4"	1 HOUR	PANIC BAR/PUSH PAD	WOOD	-	-	FR, HA, CLO, DS, DST (NOTE 1) (KEYED LOCK FROM OUT SIDE ONLY) VERIFY EXISTING R.O. PRIOR TO ORDERING	CC	METAL	1 HOUR	H1	J1	-	-	-	EXISTING WALL (VIF)
										CC	METAL	1 HOUR						EXISTING WALL (VIF)
200	F	3'-0" x 7'-0"	1 3/4"	1 HOUR	FIRE EXIT PANIC HDWE	WOOD	-	-	FR, PH, HA, CLO, DST, DS, DSI	CC	METAL	1 HOUR						NOTE 4 EXISTING WALL (VIF)
201	F	PR 3'-0" x 7'-0"	1 3/4"	1 HOUR	FIRE EXIT PANIC HDWE	WOOD	-	-	FR, PH, HA, CLO, DST, DS, DSI (VERIFY EXISTING R.O. IN FIELD PRIOR TO ORDERING)			1 HOUR						NOTE 4 EXISTING WALL (VIF)
202	F	PR 3'-0" x 7'-0"	1 3/4"	1 HOUR	FIRE EXIT PANIC HDWE	WOOD	-	-	FR, PH, HA, CLO, DST, DS, DSI (VERIFY EXISTING R.O. IN FIELD PRIOR TO ORDERING)	CC	METAL							NOTE 4 EXISTING WALL (VIF)
203	NOT USED																	
										CC	METAL	1 HOUR	H1	J1	-	-	-	
300	F	3'-0" x 7'-0"	1 3/4"	1 HOUR	FIRE EXIT PANIC HDWE	WOOD	-	-	FR, HA, PH, CLO, DST, DS, DSI	CC	METAL	1 HOUR	H1	J1	-	-	-	NOTE 4 EXISTING WALL (VIF)
301	F	3'-0" x 7'-0"	1 3/4"	1 HOUR	FIRE EXIT PANIC HDWE	WOOD	-	-	FR, HA, PH, CLO, DST, DS, DSI			1 HOUR						NOTE 4 EXISTING WALL (VIF)
302	F	3'-0" x 7'-0"	1 3/4"	1 HOUR	FIRE EXIT PANIC HDWE	WOOD	-	-	FR, HA, PH, CLO, DST, DS, DSI									NOTE 4
303	NOT USED																	

### NOTES

- SPECIFIC SELECTION OF DOOR TYPES, THICKNESS, VENEER, HINGES, LEVER HANDLES, PANIC BARS OR PADS, WOOD TRIM AND OTHER RELATED DOOR HARDWARE BY OWNER/G.C. (MAINTAIN FIRE RATINGS REQUIRED FOR DOORS AND FRAMES INDICATED IN THIS SCHEDULE, TYP)
- ALL DOORS SHALL BE EQUIPPED WITH LEVER TYPE HANDLES (UON) AND SHALL BE ADA COMPLIANT. OPERABLE PARTS SHALL BE 34" MIN. TO 48" MAX. ABOVE FINISHED FLOOR AND OPERATE WITH ONE HAND AND SHALL NOT REQUIRE TIGHT GRASPING, PINCHING, OR TWISTING OF THE WRIST. THE FORCE REQUIRED TO ACTIVATE OPERABLE PARTS SHALL BE 5 POUNDS (22.2N) MAXIMUM.
  - a) DOOR CLOSERS SHALL BE ADJUSTED SO THAT FROM AN OPEN POSITION OF 90 DEGREES, THE TIME REQUIRED TO MOVE THE DOOR TO A POSITION OF 12 DEGREES FROM THE LATCH IS 5 SECONDS, MINIMUM
- MAGNETIC DOOR HOLDBACKS SHALL RELEASE UPON INITIATION OF THE FIRE ALARM SYSTEM.
- FIRE EXIT PANIC HARDWARE SHALL CONSIST OF LISTED FIRE LABEL WITH LATCHING MECHANISM ON LABELED FIRE RATED DOORS. REQUIRED FIRE EXIT HARDWARE SHALL NOT BE EQUIPPED WITH ANY LOCKING DEVICE, SET SCREW, OR OTHER ARRANGEMENT THAT PREVENTS THE RELEASE OF THE LATCH WHEN PRESSURE IS APPLIED TO THE RELEASING DEVICE.



### FRAME TYPES

### DOOR TYPES

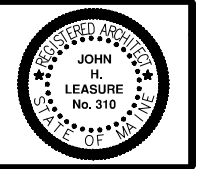
### HEAD & JAMB TYPES

#### NOTES

- DESIGN OF HEADS, JAMBS ETC. - SEE STRUCTURAL DRAWINGS
- G.C. VERIFY ACTUAL THICKNESS OF EXISTING WALLS IN FIELD PRIOR TO ORDERING OR FABRICATION.
- WALL TYPES-SHEET A12

**ETZ CHAIM SYNAGOGUE**  
267 CONGRESS STREET  
PORTLAND, MAINE

DOOR SCHEDULE



REV.	DATE	STATUS
0	4-8-13	STATE FIRE MARSHAL SUBMISSION
1	4-25-13	ISSUED FOR PERMIT
2	7-02-13	REVISED
3	7-10-13	REVISED

JOHN H. LEASURE ARCHITECT, INC.  
6 Q STREET  
SOUTH PORTLAND, MAINE 04106

**A13**