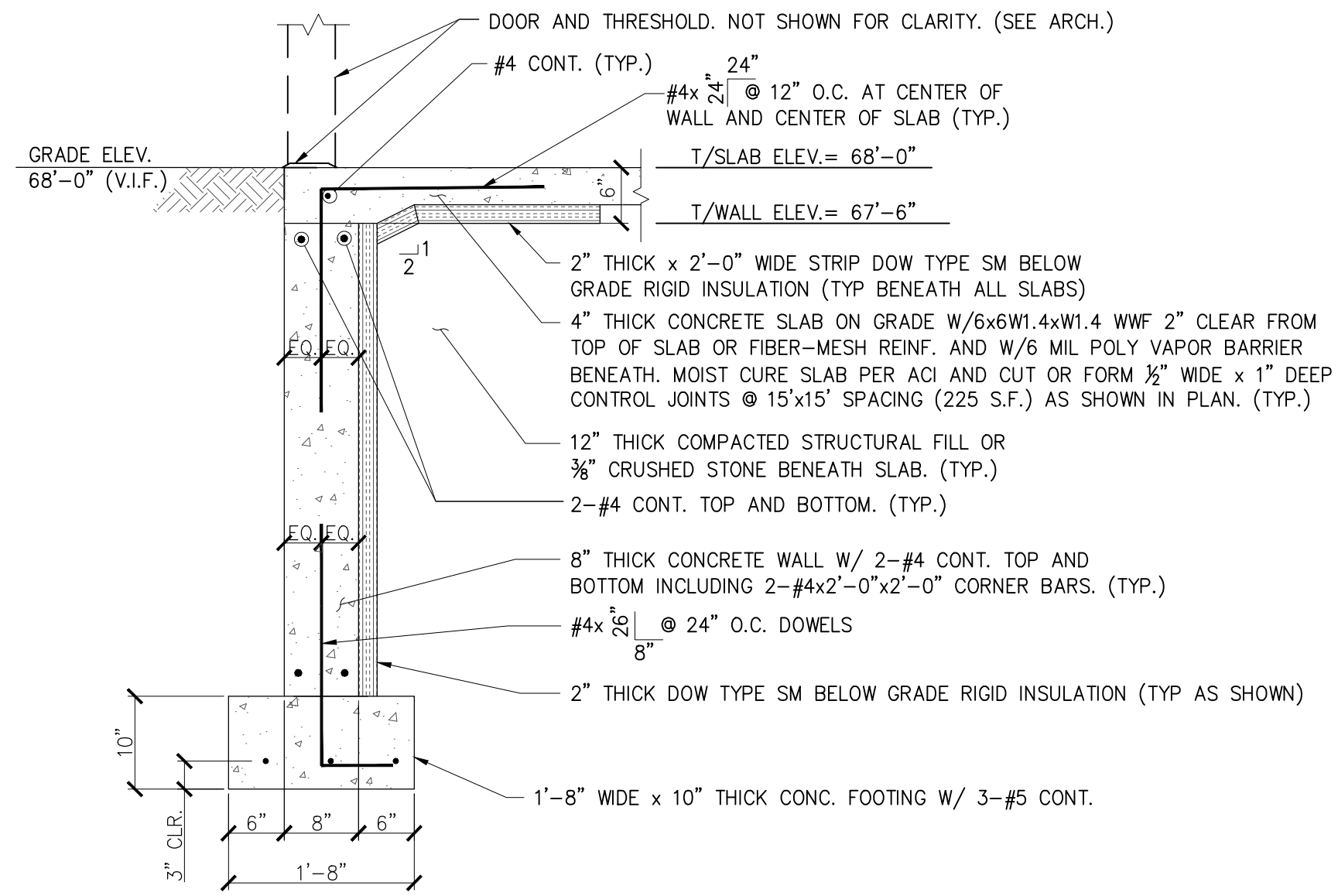
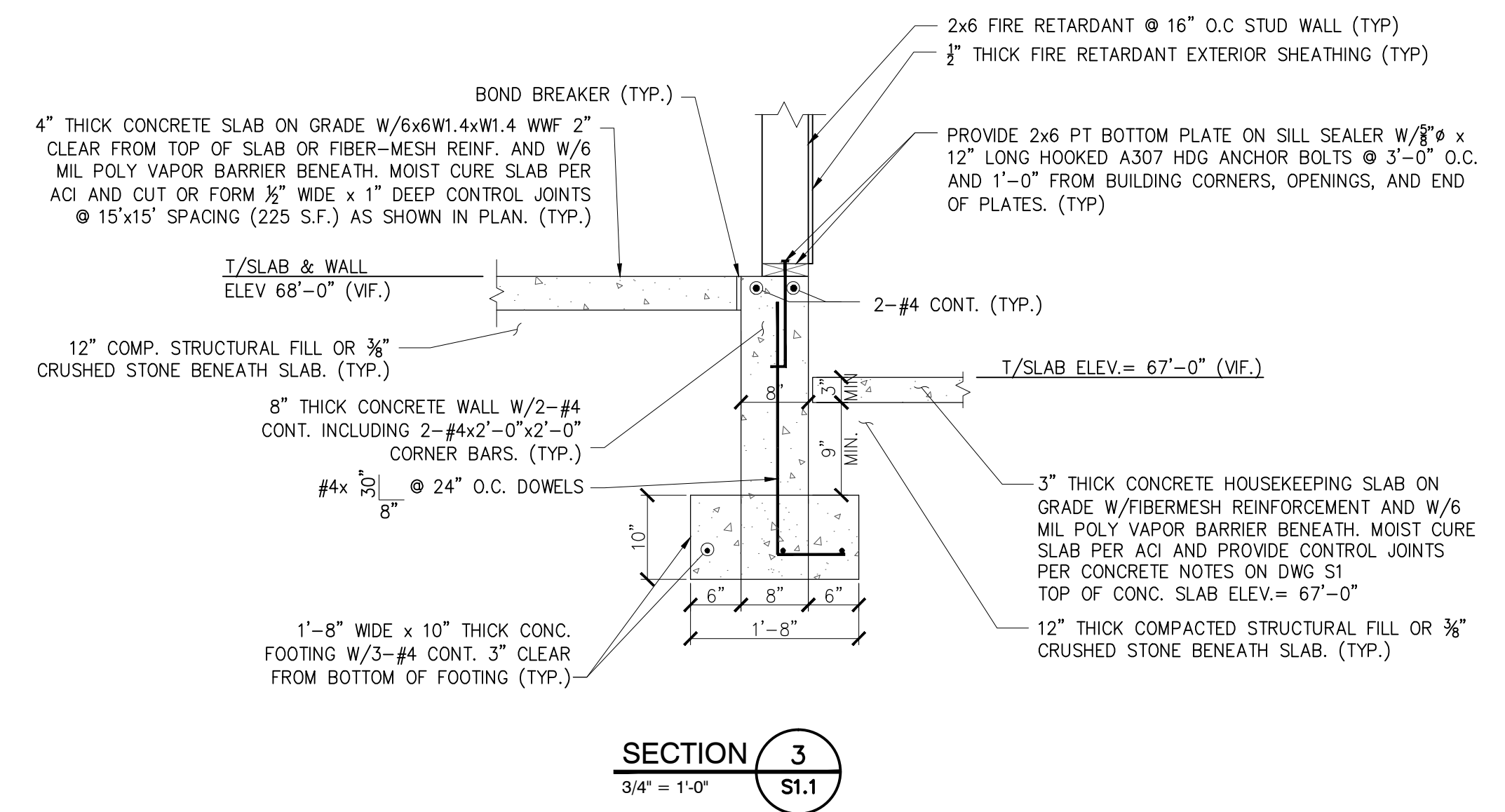


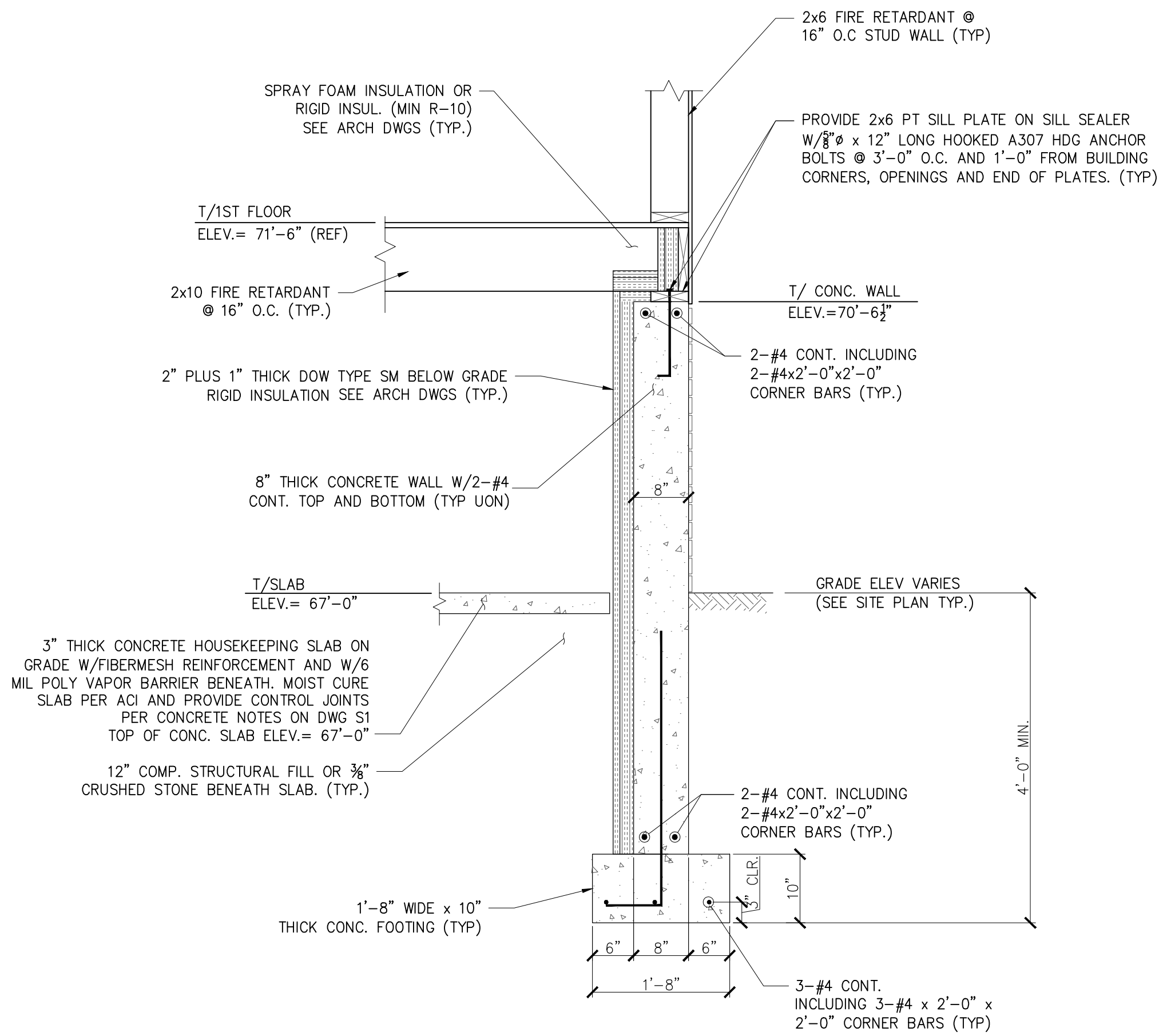
SECTION 1
3/4" = 1'-0" S1.1



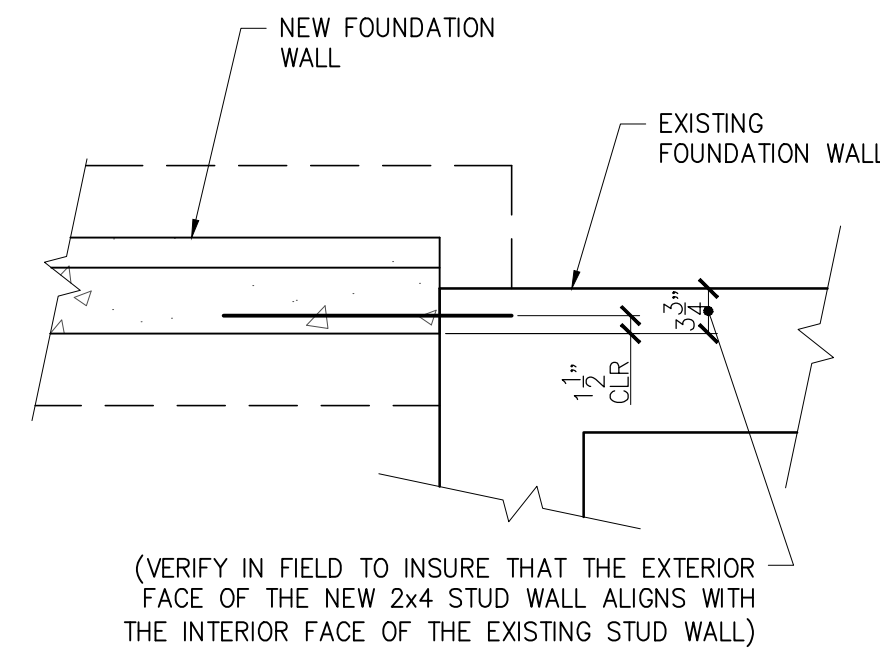
SECTION 2
3/4" = 1'-0" S1.1



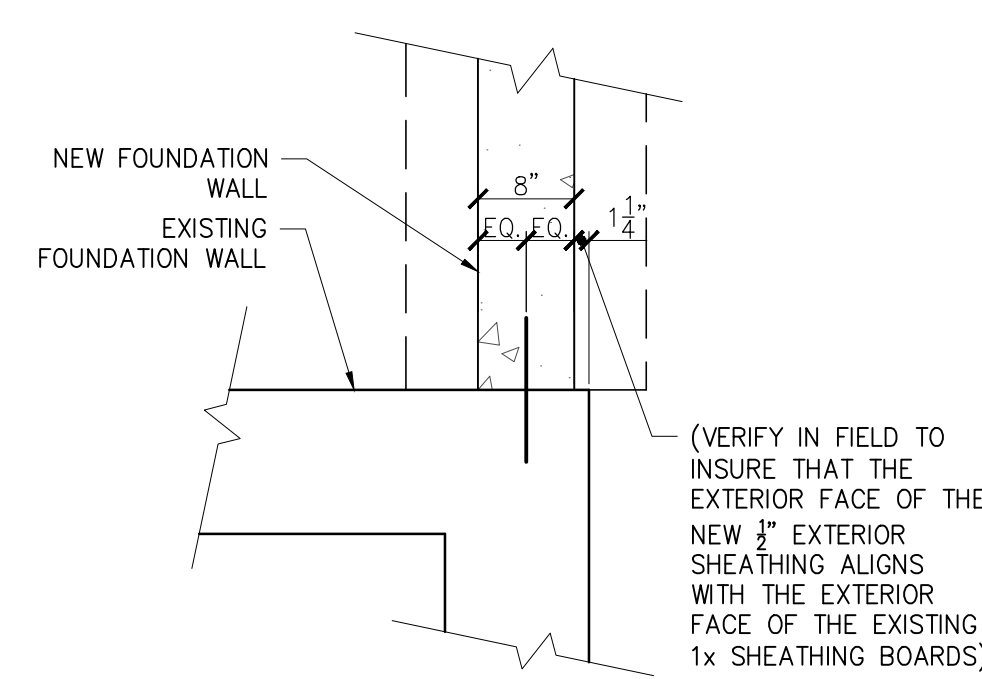
SECTION 3
3/4" = 1'-0" S1.1



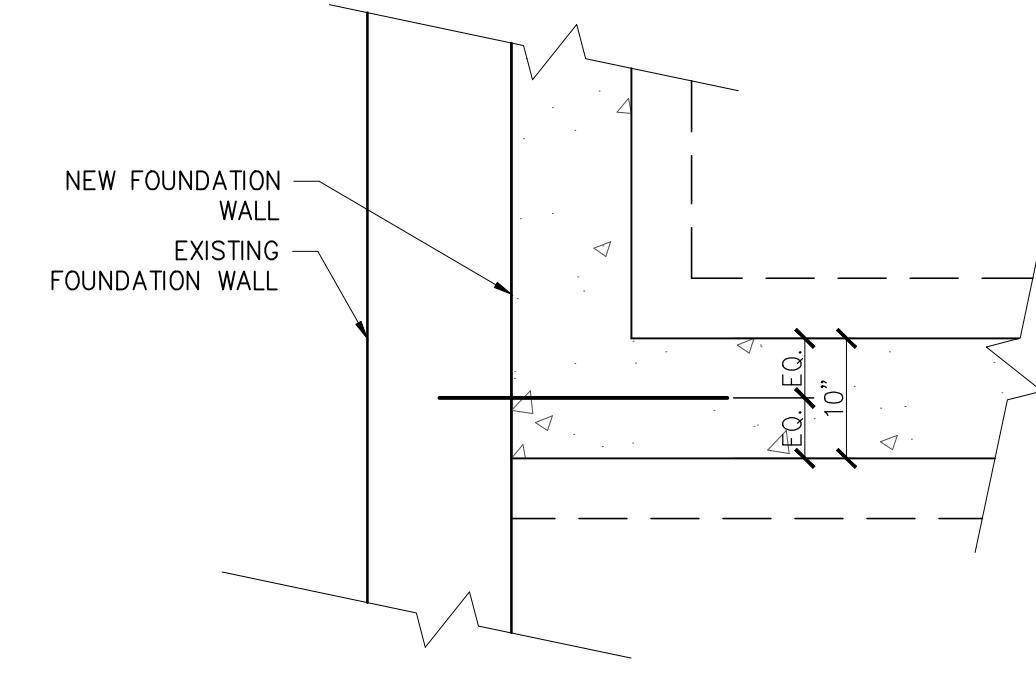
SECTION 4
3/4" = 1'-0" S1.1



DETAIL A
3/4" = 1'-0" S1.1



DETAIL B
3/4" = 1'-0" S1.1



DETAIL C
3/4" = 1'-0" S1.1

rev.	date	description	approved
A	4-26-13	FOR PERMIT ONLY	JHL

ETZ CHAIM SYNAGOGUE-ADDITIONS & RENOVATIONS
267 CONGRESS STREET
PORTLAND, MAINE
FOUNDATION SECTIONS AND DETAILS

L & L STRUCTURAL
ENGINEERING SERVICES, INC.
SIX O. STREET
SOUTH PORTLAND, MAINE 04106
PHONE: (207) 767-4830
FAX: (207) 799-5432

S2.1

THESE DRAWINGS HAVE BEEN DEVELOPED BY L&L STRUCTURAL ENGINEERING SERVICES, INC. FOR THE TITLED SET ONLY. THE DRAWINGS ARE THE SOLE PROPERTY OF L&L ENGINEERING SERVICES, INC. AND THEY SHALL NOT BE USED, LENT, COPIED OR ALTERED WITHOUT THE WRITTEN CONSENT OF L&L STRUCTURAL ENGINEERING SERVICES, INC.