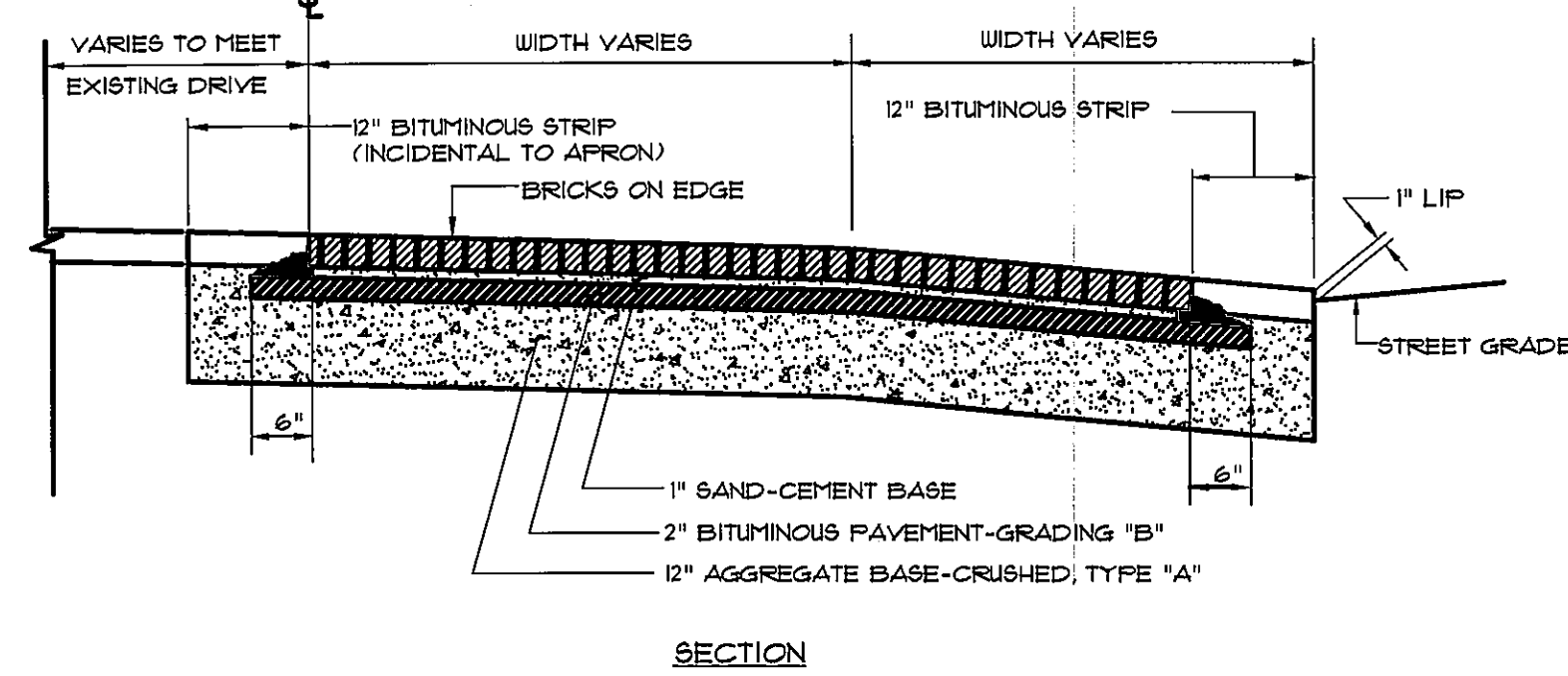
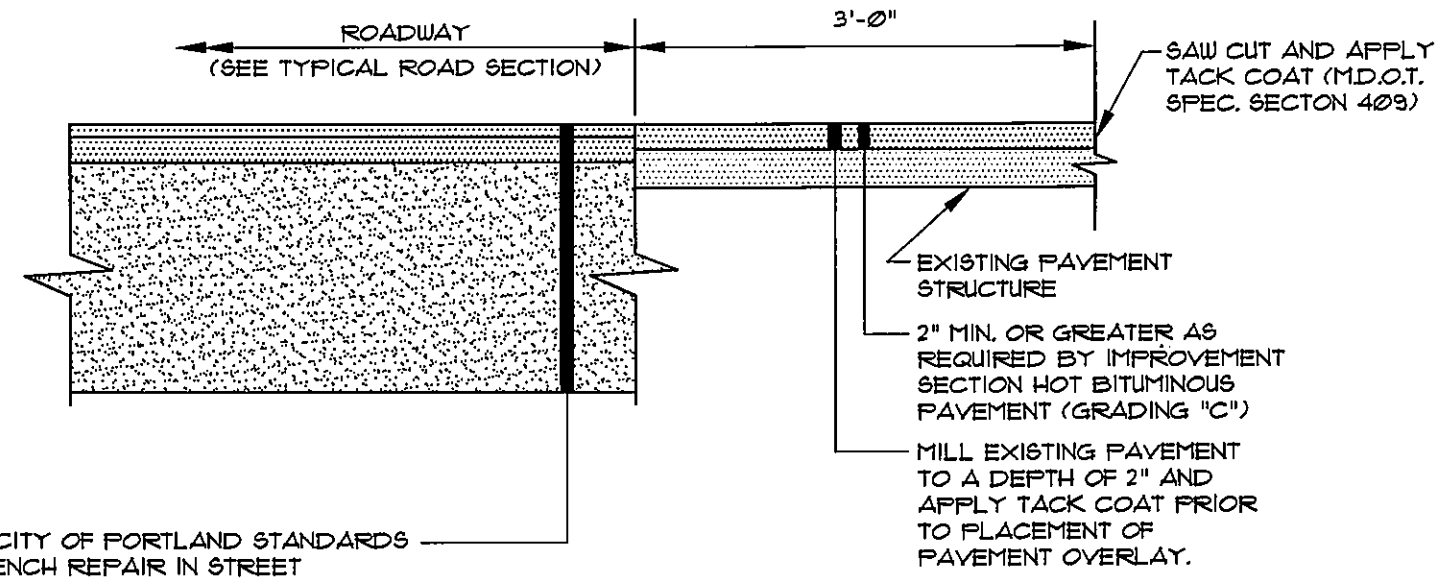


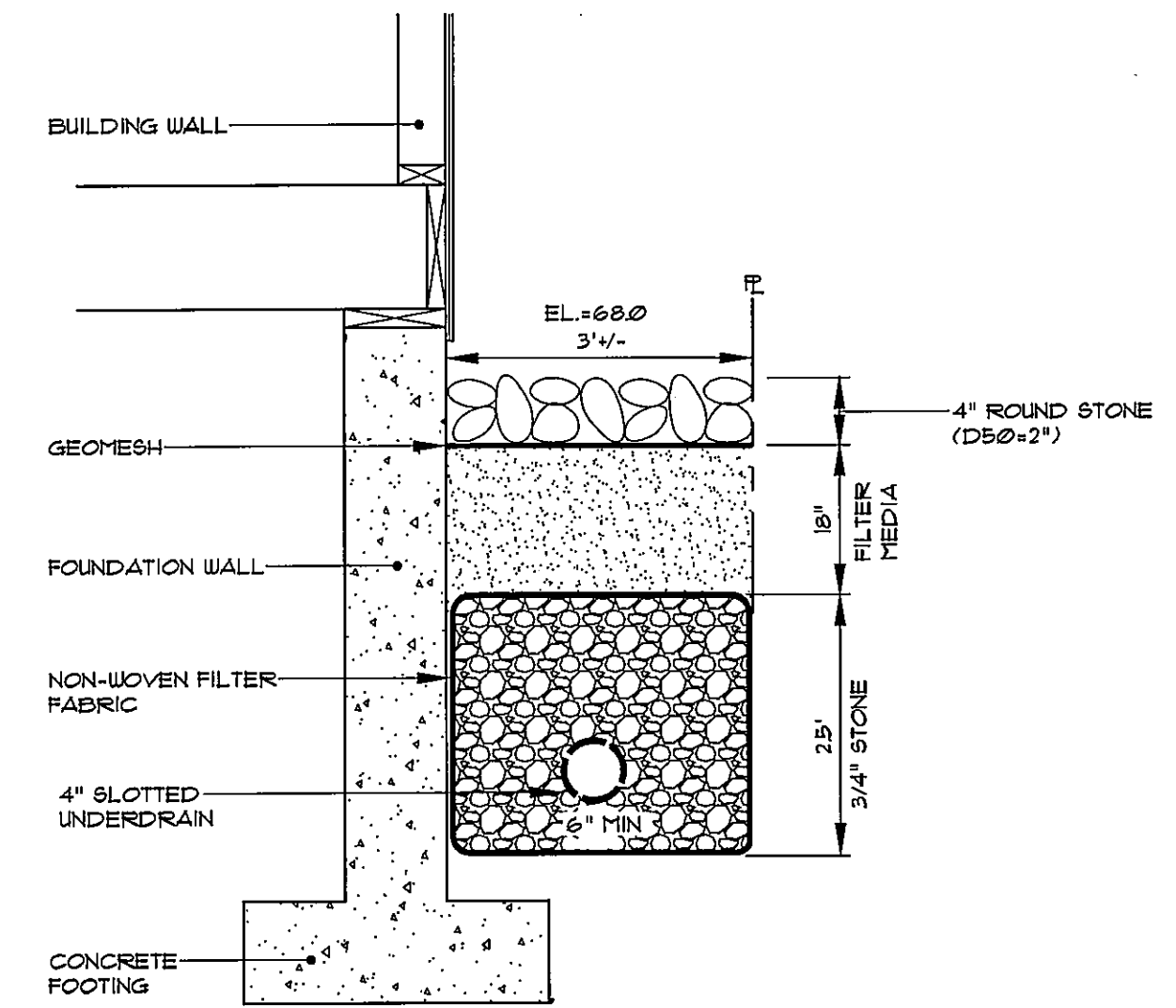
NOTE:
BORDER COURSE OF BRICK
SHALL BE MORTARED
TO PAVEMENT BASE.



BRICK DRIVEWAY APRON REPAIR DETAIL
NOT TO SCALE

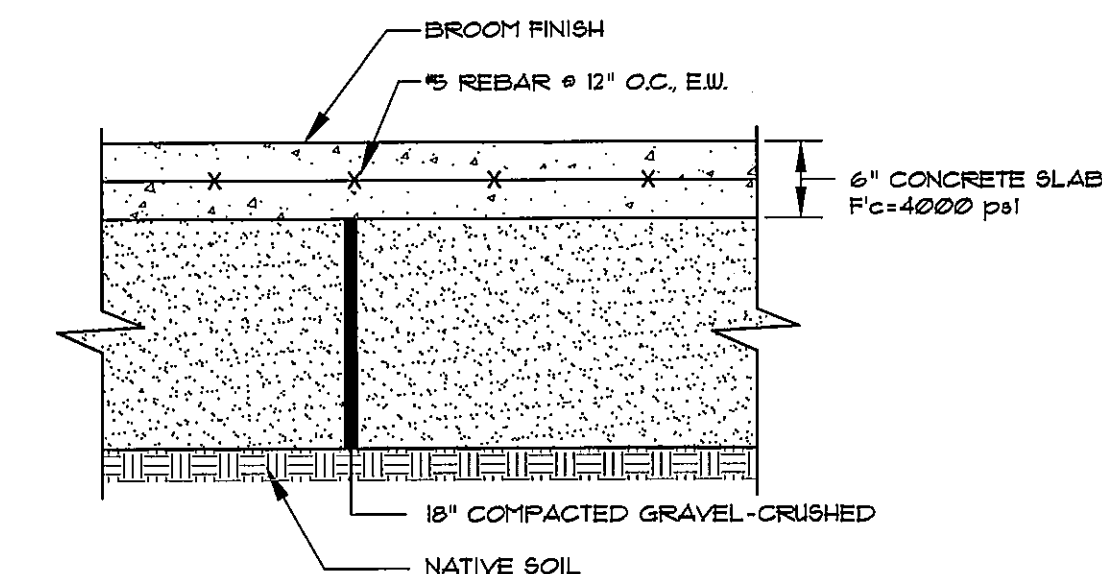


TYPICAL PAVEMENT JOINT
NOT TO SCALE



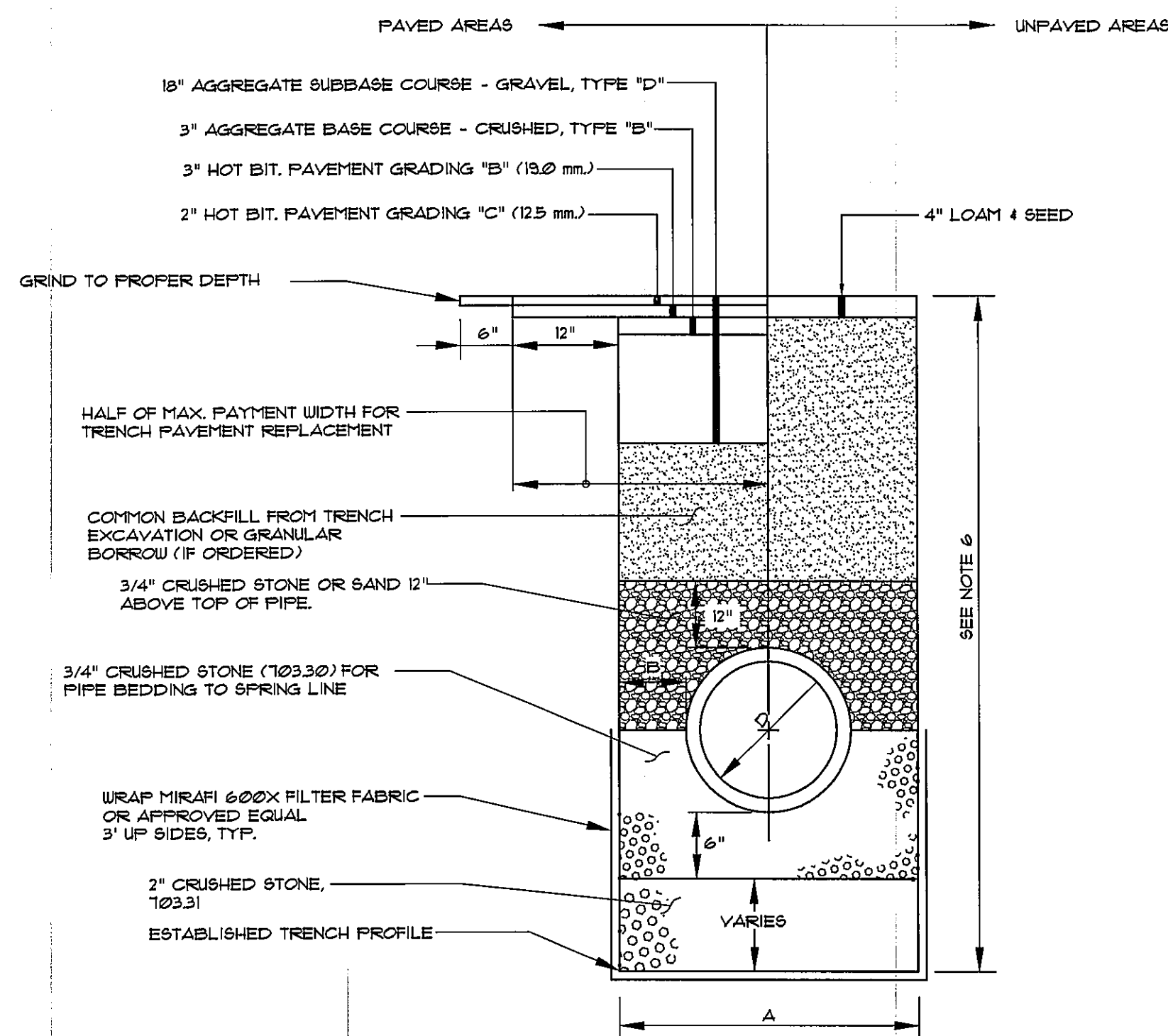
DRIP EDGE DETAIL
NOT TO SCALE

NOTE:
1. THE BACKFILL FOR THE FOUNDATION MAY BE USED AS THE FILTER MEDIA AS LONG AS THE MATERIAL IS A MINERAL SOIL WITH BETWEEN 4 AND 1% FINES (PASSING #200 SIEVE) AND IS 4 INCHES THICK AT A MINIMUM.



NOTE:
1. PROVIDE CONTRACTION CONTROL JOINTS EVERY 6' IN EACH DIRECTION

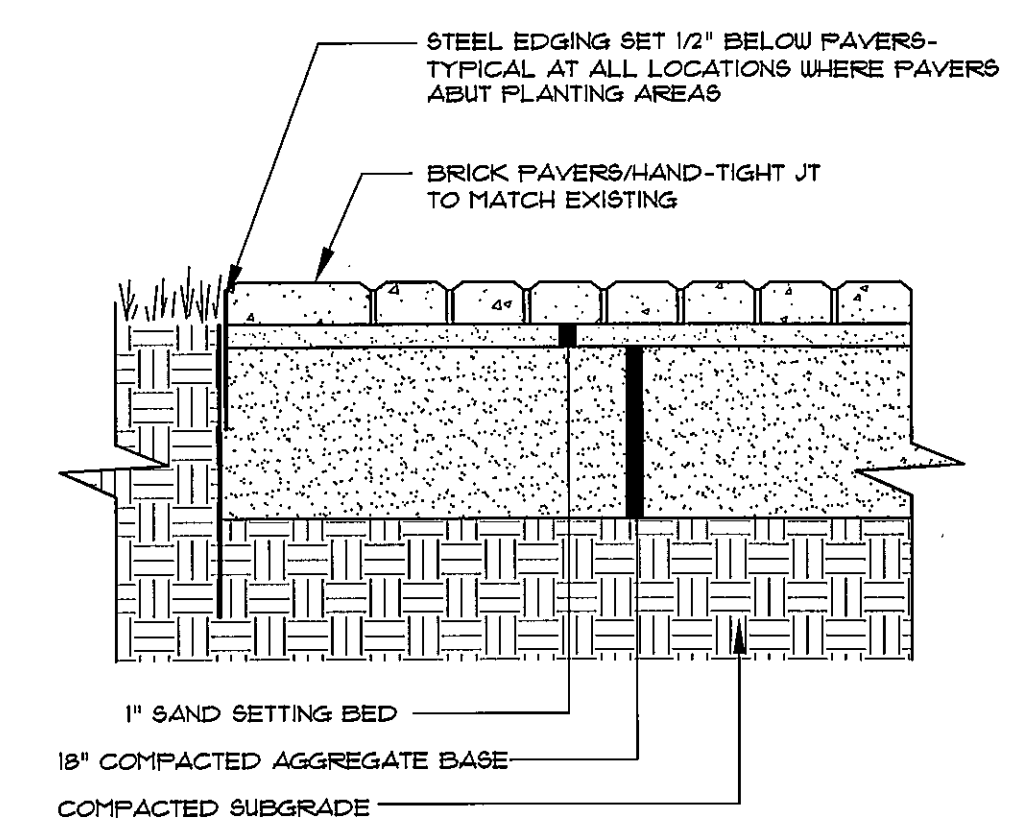
TYPICAL CONCRETE PAD @ EXIT DOORS
NOT TO SCALE



TYPICAL PIPE INSTALLATION / PAVEMENT REPAIR DETAIL
NOT TO SCALE

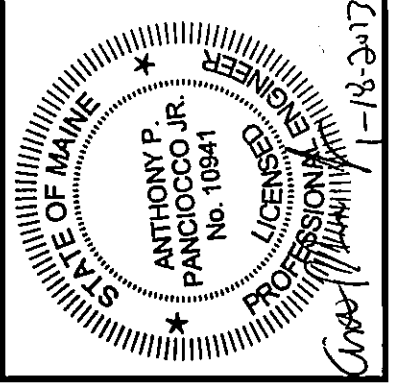
- NOTES:
1. ALTERNATIVE CONSTRUCTION METHODS OR PAYMENT METHODS SHALL BE APPROVED IN ADVANCE BY THE CITY OF PORTLAND, DEPARTMENT OF PUBLIC WORKS.
 2. IN PAVED AREAS REFER TO BITUMINOUS PAVEMENT SECTION FOR DEPTHS OF GRAVEL AND HOT MIX ASPHALT PAVEMENT BASED ON THE CORRESPONDING STREET CLASSIFICATION.
 3. DIMENSION "B" SHALL BE SUFFICIENT TO ALLOW CRUSHED STONE BEDDING TO BE PLACED AND COMPACTED UNDER THE HAUNCHES OF THE PIPE; BUT IN ALL CASES "B" SHALL BE AT LEAST 3".
 4. DIMENSION "A" IS THE MAXIMUM WIDTH ALLOWED FOR CALCULATING PAY QUANTITIES UNDER GRANULAR BORROW, CRUSHED STONE, STRUCTURAL EARTH EXCAVATION, AND STRUCTURAL ROCK EXCAVATION. DIMENSION "A" SHALL BE BASED ON PIPE DIAMETER "D", AS SET FORTH IN THE TABLE BELOW.
 5. DEPTH OF BITUMINOUS PAVEMENT AND AGGREGATE COURSES SHALL BE DETERMINED BY STREET CLASSIFICATION.
 6. ANY ALTERNATE TRENCHING OR PAYMENT METHODS SHALL BE APPROVED IN ADVANCE BY THE CITY OF PORTLAND, DEPARTMENT OF PUBLIC SERVICES.

PIPE DIAMETER, "D" (INCHES)	MAX. TRENCH WIDTH, "A" (FEET)
4	4.0
6	4.0
8	4.0
10	4.0
12	5.0
15	5.0
18	5.0
21	5.0
24	6.0
27	6.0
30	6.0
36	6.0
42	7.0
48	7.0



NOTE: SEE PLANS & SPECS. FOR PAVEMENT TYPE, COLOR, INSTALLATION PATTERN AND LOCATION

SPECIALTY PAVEMENT
NOT TO SCALE



PROGRESS PRINT

REV.	DATE	BY	STATUS
D	01-22-2013	JRS	REV 1 - SITE PLAN RESUBMISSION
C	10-23-2012	JRS	REVISED PER CITY REVIEW COMMENTS DATED 10-11-2012
B	8-3-2012	JRS	SUBMITTED FOR SITE PLAN REVIEW
A	6-29-2012	JRS	SUBMITTED FOR SKETCH PLAN REVIEW

THIS PLAN SHALL NOT BE MODIFIED WITHOUT WRITTEN PERMISSION FROM SEBAGO TECHNICS, INC. ANY ALTERATIONS, AUTHORIZED OR OTHERWISE, SHALL BE AT THE USER'S SOLE RISK AND WITHOUT LIABILITY TO SEBAGO TECHNICS, INC.

SEBAGO TECHNICS
76 John Rodgers Rd., Suite 1A
South Portland, ME 04106
Tel: 207-298-2100
Fax: 207-785-9559

PROJECT NO. 113250
FIELD BOOK N/A
DESIGN JRS
CHECK JRS
DRAWN JRS
APP JRS

DETAILS OF:
ETZ CHIAM SYNAGOGUE
26 CONGRESS STREET
PORTLAND, MAINE
FOR:
JOHN H. LEASURE ARCHITECT, INC.
SIX Q STREET
SOUTH PORTLAND, ME 04106

DATE	SCALE
6-27-2012	AS NOTED