

DOOR SCHEDULE

DOOR SCHEDULE ABBREVIATIONS

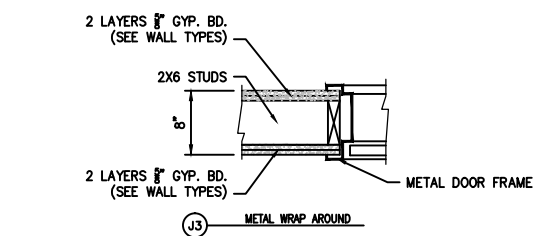
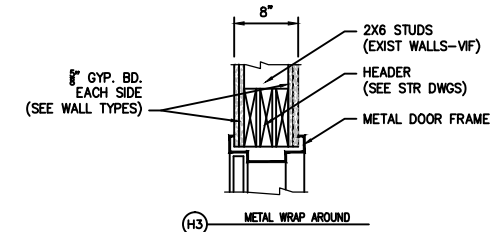
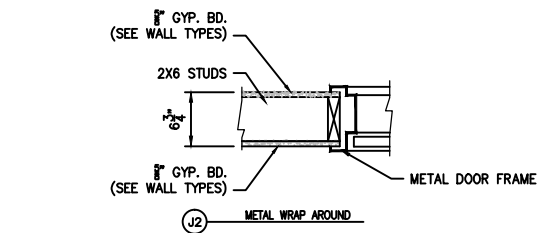
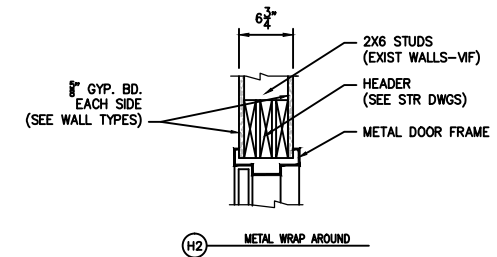
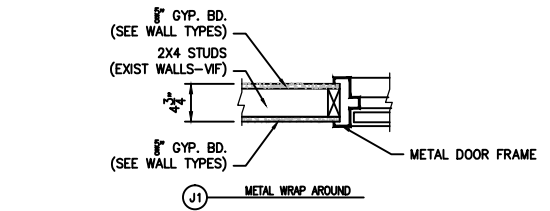
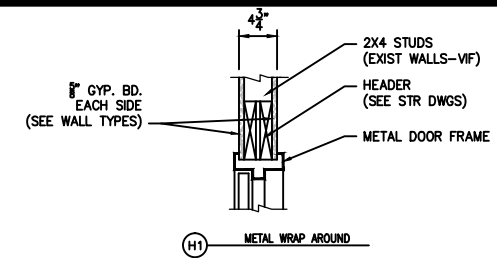
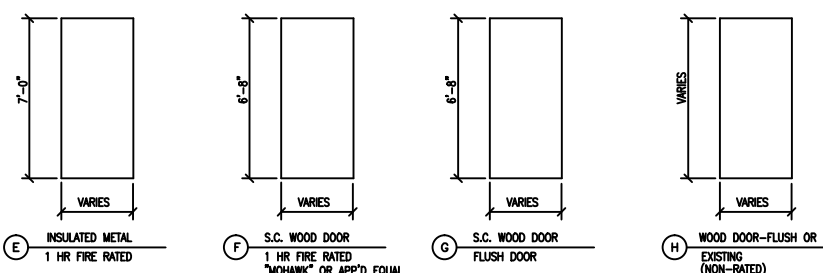
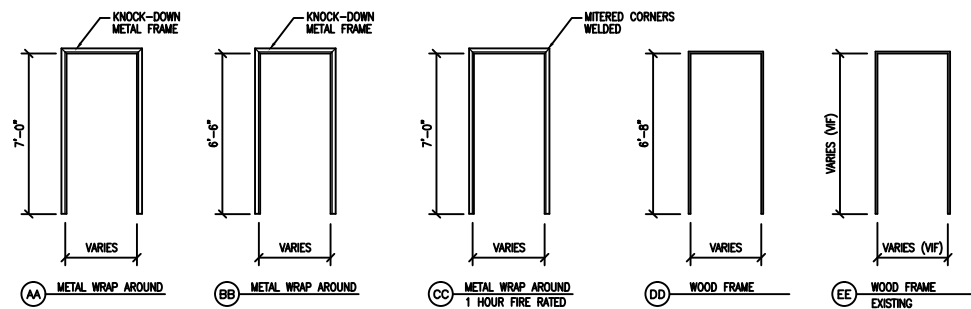
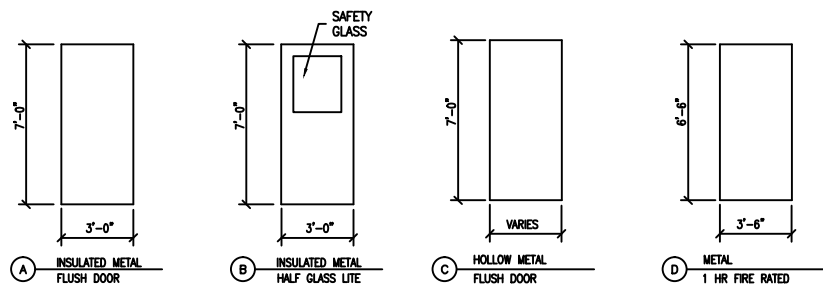
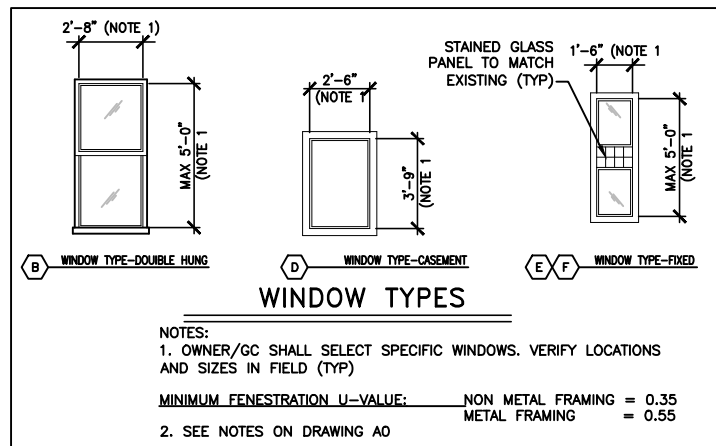
CLO. CLOSER	HM HOLLOW METAL	S.C. SOLID CORE HARDBOARD
DSI DOOR SILENCERS	INS INSULATED	S.H. SPRING HINGE
D.S. DOOR SWEEP (SOUNDPROOFING)	K KICKPLATE (PUSH SIDE)	S.J. SPLIT JAMB (WOOD)
DST DOOR STOP	KL KEY LOCK	TEMP TEMPERED
EHO ELECTRO. HOLD OPENER	MTL. METAL	TL THUMB LATCH
ES ELECTRIC STRIKE	NO NUMBER	THK THICKNESS
F.J.P. FINGER JOINTED PRIMED	PS PASSAGE SET	UC UNDERCUT
FR FIRE RATED	P.H. PANIC HARDWARE	WD WOOD (SOLID)
HA HANDICAP ACCESSIBLE	P.P. PUSH PADDLE	WG WIRE GLASS
HC HOLLOW CORE HARDBOARD	PVS PRIVACY SET	V VIEWER
HDWE HARDWARE	S. STEEL	VIF VERIFY IN FIELD

DOORS

MARK	TYPE	SIZE	THK.	F.R.	HDWE SET	MAT.	GLASS		REMARKS	FRAME TYPES			THRESHOLD			REMARKS		
							SIZE	TYPE		TYPE	MAT.	F.R.	DETAILS		MAT.		DETAIL	
													HEAD	JAMB			SILL	HT.
01	F	3'-6" x 6'-6"	1 3/4"	1 HOUR	LEVER	METAL	-	-	FR, EHO, HA, CLO, PS, DST (LOW HEADROOM-VERIFY IN FIELD)	CC	METAL	1 HOUR	H2	J2	-	-	-	
02	D	3'-0" x 6'-6"	1 3/4"	1 HOUR	LEVER	METAL	-	-	FR, CLO, PS, KL (NOTE 1), DST (LOW HEADROOM-VERIFY IN FIELD) NO KEY REQ'D ON MACHINE ROOM SIDE	CC	METAL	1 HOUR	H2	J2	-	-	-	
101	H	PR 3'-0" x 7'-0"	1 3/4"	-	PANIC BAR/PAD	WOOD	-	-	HA, PH, KL, (EXISTING WOOD PANEL DOORS - FIT W/PANIC HDWE, NO CENTER MULLION) (VIF)	EE	WOOD	-	EXISTING	EXISTING	ALUMINUM	EXISTING	-	EXISTING (VIF)
102	F	3'-0" x 7'-0"	1 3/4"	1 HOUR	LEVER	WOOD	-	-	FR, HA, PS, CLO, DS (NOTE 1)	CC	METAL	1 HOUR	H1	J1	-	-	-	EXISTING WALL (VIF)
103	F	3'-0" x 7'-0"	1 3/4"	1 HOUR	LEVER	WOOD	-	-	FR, HA, PS, CLO, DS (NOTE 1)	CC	METAL	1 HOUR	H1	J1	-	-	-	
104	F	PR 3'-0" x 7'-0"	1 3/4"	1 HOUR	LEVER	WOOD	-	-	FR, HA, PS, CLO, DS (NOTE 1)	CC	METAL	1 HOUR	H1	J1	-	-	-	EXISTING WALL (VIF)
105	F	3'-6" x 7'-0"	1 3/4"	1 HOUR	LEVER	WOOD	-	-	FR, EHO, HA, CLO, PS, DST (NOTE 1)	CC	METAL	1 HOUR	-	-	-	-	-	EXISTING WALL (VIF)
106	E	3'-0" x 7'-0"	1 3/4"	1 HOUR	LEVER	METAL	-	-	FR, INS, HA, CLO, KL	CC	METAL	1 HOUR	H1	J1	-	-	-	
107	G	3'-0" x 7'-0"	1 3/4"	-	LEVER	WOOD	-	-	HA, PS, CLO, DSI, DS, DST	BB	METAL	-	H1	J1	-	-	-	
108	G	3'-0" x 7'-0"	1 3/4"	-	LEVER	WOOD	-	-	HA, PS, CLO, DSI, DS, DST	BB	METAL	-	-	-	-	-	-	
109	H	3'-0" x 7'-0"	1 3/4"	-	PANIC BAR/PAD	METAL	-	-	INS, HA, PH, CLO, KL (EXISTING DOOR - FIT W/PANIC HDWE & OUTWARD SWING) (VIF)	AA	METAL	-	-	-	ALUMINUM	EXISTING	-	EXISTING (VIF)
110	B	3'-0" x 7'-0"	1 3/4"	-	PANIC BAR/PAD	METAL	HALF	SAFETY GLASS	INS, HA, PH, CLO, KL	AA	METAL	-	H1	J1	ALUMINUM	-	1/2" MAX	ADA COMPLIANT
111	F	3'-0" x 7'-0"	1 3/4"	1 HOUR	LEVER	METAL	-	-	FR, HA, CLO, KL DS (KEYED LOCK FROM OUT SIDE ONLY) VERIFY EXISTING R.O. PRIOR TO ORDERING	AA	METAL	1 HOUR	-	-	-	-	-	EXISTING WALL (VIF)
200	F	3'-0" x 7'-0"	1 3/4"	1 HOUR	PANIC BAR/PAD	WOOD	-	-	FR, PH, HA, CLO, DST, DS, DSI	CC	METAL	1 HOUR	-	-	-	-	-	
201	F	PR 3'-0" x 7'-0"	1 3/4"	1 HOUR	PANIC BAR/PAD	WOOD	-	-	FR, PH, HA, CLO, DST, DS, DSI (VERIFY EXISTING R.O. IN FIELD PRIOR TO ORDERING)	CC	METAL	1 HOUR	-	-	-	-	-	EXISTING WALL (VIF)
202	F	PR 3'-0" x 7'-0"	1 3/4"	1 HOUR	PANIC BAR/PAD	WOOD	-	-	FR, PH, HA, CLO, DST, DS, DSI (VERIFY EXISTING R.O. IN FIELD PRIOR TO ORDERING)	CC	METAL	1 HOUR	-	-	-	-	-	EXISTING WALL (VIF)
203	D	3'-6" x 7'-0"	1 3/4"	1 HOUR	LEVER	WOOD	-	-	FR, EHO, HA, CLO, PS, DST (NOTE 1)	CC	METAL	1 HOUR	-	-	-	-	-	EXISTING WALL (VIF)
300	F	3'-0" x 7'-0"	1 3/4"	1 HOUR	LEVER	WOOD	-	-	FR, HA, CLO, DST, DS, DSI	CC	METAL	1 HOUR	-	-	-	-	-	
301	F	3'-0" x 7'-0"	1 3/4"	1 HOUR	LEVER	WOOD	-	-	FR, HA, CLO, DST, DS, DSI	CC	METAL	1 HOUR	H1	J1	-	-	-	
302	F	3'-0" x 7'-0"	1 3/4"	1 HOUR	LEVER	WOOD	-	-	FR, HA, CLO, DST, DS, DSI	CC	METAL	1 HOUR	H1	J1	-	-	-	
303	D	3'-6" x 7'-0"	1 3/4"	1 HOUR	LEVER	WOOD	-	-	FR, EHO, HA, CLO, PS, DST (NOTE 1)	CC	METAL	1 HOUR	-	-	-	-	-	EXISTING WALL (VIF)

NOTES

- SPECIFIC SELECTION OF DOOR TYPES, THICKNESS, VENEER, HINGES, LEVER HANDLES, PANIC BARS OR PADS, WOOD TRIM AND OTHER RELATED DOOR HARDWARE BY OWNER/G.C. (MAINTAIN FIRE RATINGS REQUIRED FOR DOORS AND FRAMES INDICATED IN THIS SCHEDULE, TYP)
- ALL DOORS SHALL BE EQUIPPED WITH LEVER TYPE HANDLES (UON) AND SHALL BE ADA COMPLIANT. OPERABLE PARTS SHALL BE 34" MIN. TO 48" MAX. ABOVE FINISHED FLOOR AND OPERATE WITH ONE HAND AND SHALL NOT REQUIRE TIGHT GRASPING, PINCHING, OR TWISTING OF THE WRIST. THE FORCE REQUIRED TO ACTIVATE OPERABLE PARTS SHALL BE 5 POUNDS (22.2N) MAXIMUM.
 - o) DOOR CLOSERS SHALL BE ADJUSTED SO THAT FROM AN OPEN POSITION OF 90 DEGREES, THE TIME REQUIRED TO MOVE THE DOOR TO A POSITION OF 12 DEGREES FROM THE LATCH IS 5 SECONDS, MINIMUM
- MAGNETIC DOOR HOLDBACKS SHALL RELEASE UPON INITIATION OF THE FIRE ALARM SYSTEM.



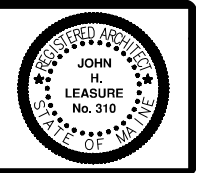
HEAD & JAMB TYPES

NOTES

- DESIGN OF HEADS, JAMBS ETC. - SEE STRUCTURAL DRAWINGS
- G.C. VERIFY ACTUAL THICKNESS OF EXISTING WALLS IN FIELD PRIOR TO ORDERING OR FABRICATION.
- WALL TYPES-SHEET A12

ETZ CHAIM SYNAGOGUE
 267 CONGRESS STREET
 PORTLAND, MAINE

DOOR SCHEDULE



REV.	DATE	STATUS
0	4-8-13	STATE FIRE MARSHAL SUBMISSION
1	4-25-13	ISSUED FOR PERMIT

JOHN H. LEASURE ARCHITECT, INC.
 6 Q STREET
 SOUTH PORTLAND, MAINE 04106

A13