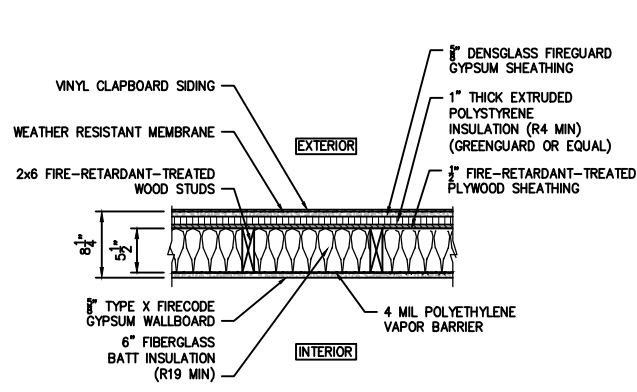


REV.	DATE	STATUS
1	1-18-13	CHANGE SIDE ADDITION FOOTPRINT & RELOCATE STAIR
2	4-8-13	STATE FIRE MARSHAL SUBMISSION
3	4-25-13	ISSUED FOR PERMIT

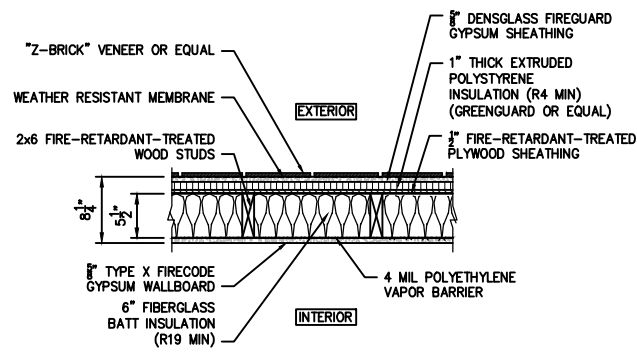
JOHN H. LEASURE ARCHITECT, INC.
6 Q STREET
SOUTH PORTLAND, MAINE 04106



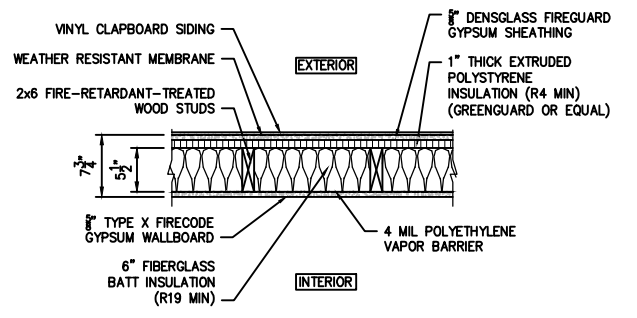
A12



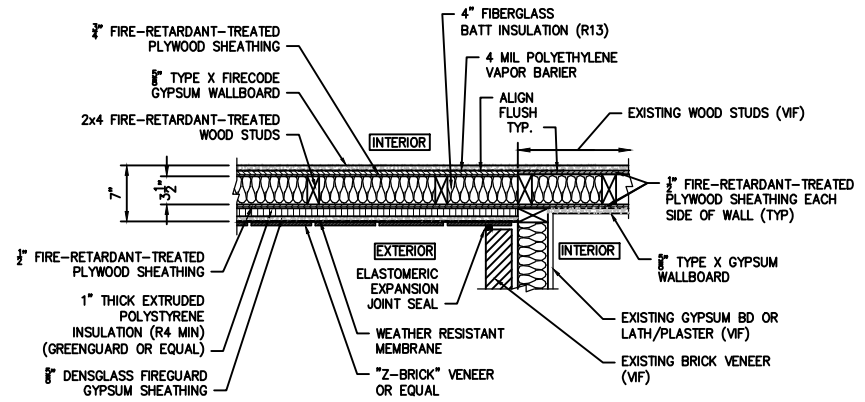
WALL TYPE 1
U.L. DESIGN U305 - MODIFIED COMPONENT ADDED METHOD
1 HOUR RATED
ALL WOOD SHALL BE FIRE-RETARDANT TREATED



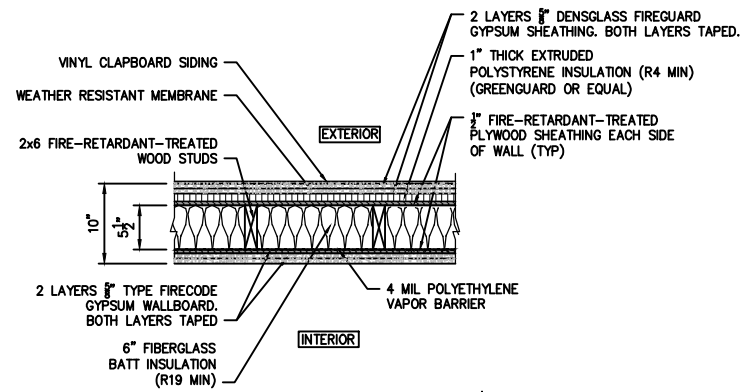
WALL TYPE 1A
U.L. DESIGN U305 - MODIFIED COMPONENT ADDED METHOD
1 HOUR RATED
ALL WOOD SHALL BE FIRE-RETARDANT TREATED



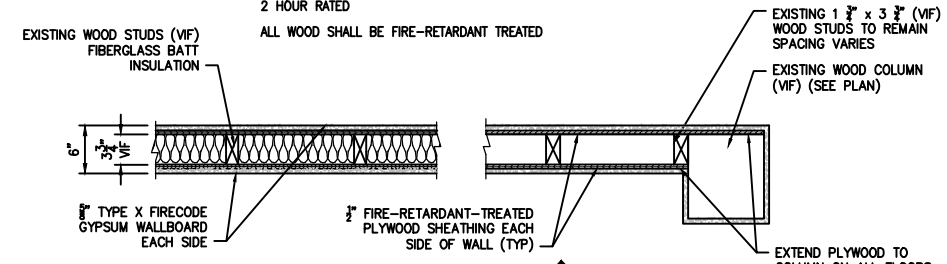
WALL TYPE 2
U.L. DESIGN U305 - MODIFIED COMPONENT ADDED METHOD
1 HOUR RATED
ALL WOOD SHALL BE FIRE-RETARDANT TREATED



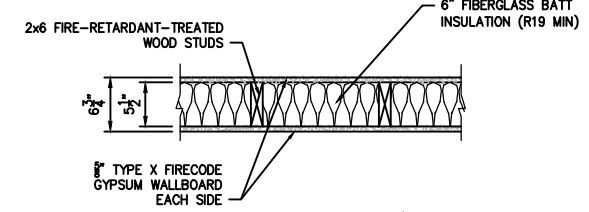
WALL TYPE 3
U.L. DESIGN U305 - MODIFIED COMPONENT ADDED METHOD
1 HOUR RATED
ALL WOOD IN NEW CONSTRUCTION SHALL BE FIRE-RETARDANT-TREATED



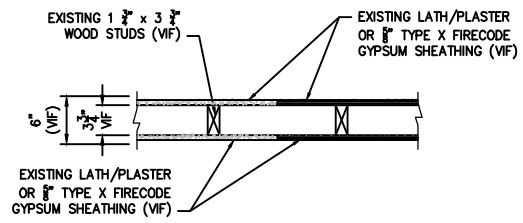
WALL TYPE 4
U.L. DESIGN U301 - MODIFIED COMPONENT ADDED METHOD
2 HOUR RATED
ALL WOOD SHALL BE FIRE-RETARDANT TREATED



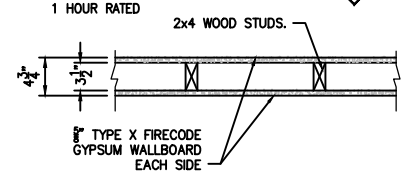
WALL TYPE - INTERIOR 5
U.L. DESIGN U305 - MODIFIED
1 HOUR RATED
ALL WOOD SHALL BE FIRE-RETARDANT TREATED



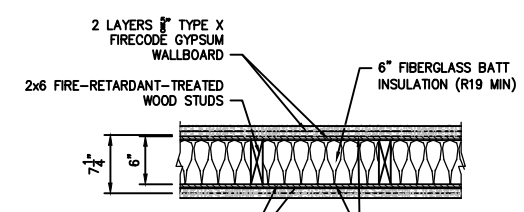
WALL TYPE - INTERIOR 6
U.L. DESIGN U305 - MODIFIED COMPONENT ADDED METHOD
1 HOUR RATED
ALL WOOD SHALL BE FIRE-RETARDANT TREATED



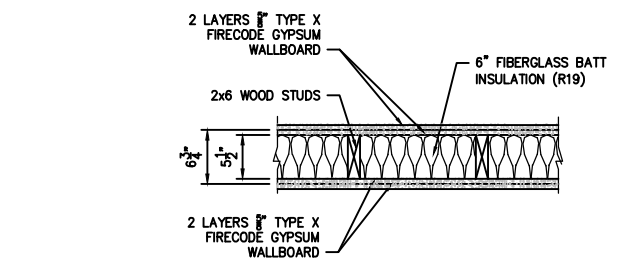
WALL TYPE - INTERIOR 7
U.L. DESIGN U305 - MODIFIED EXISTING
1 HOUR RATED



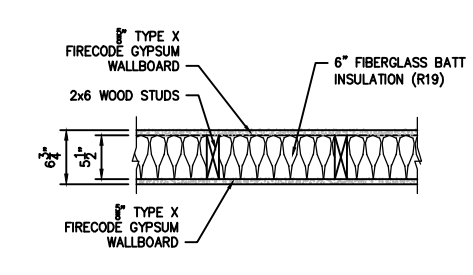
WALL TYPE - INTERIOR 8
U.L. DESIGN U305
1 HOUR RATED



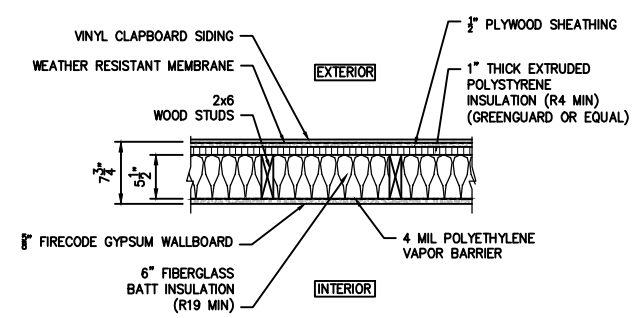
WALL TYPE - INTERIOR 9
U.L. DESIGN U301
2 HOUR RATED



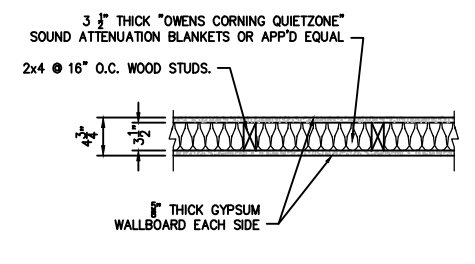
WALL TYPE - INTERIOR 10
U.L. DESIGN U301
2 HOUR RATED



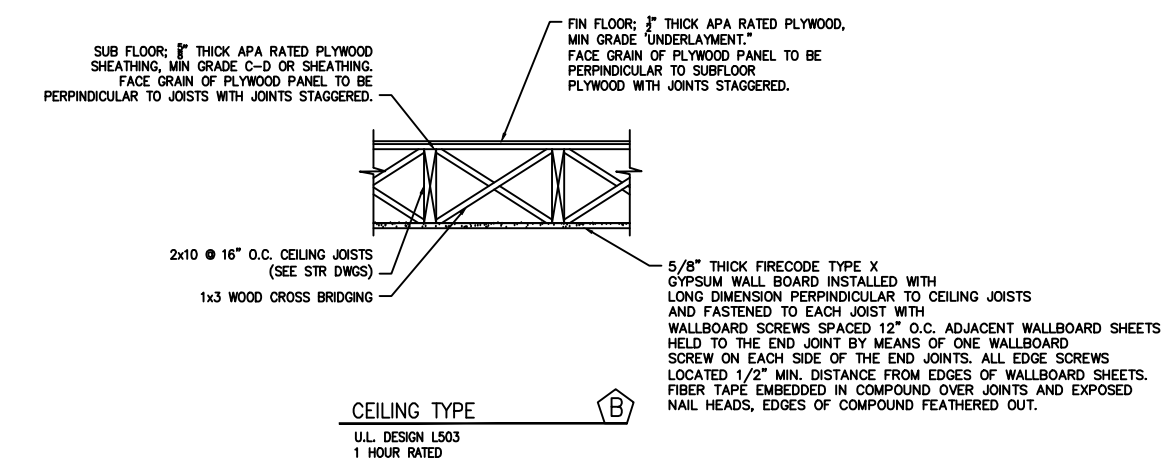
WALL TYPE - INTERIOR 11
U.L. DESIGN U305
1 HOUR RATED



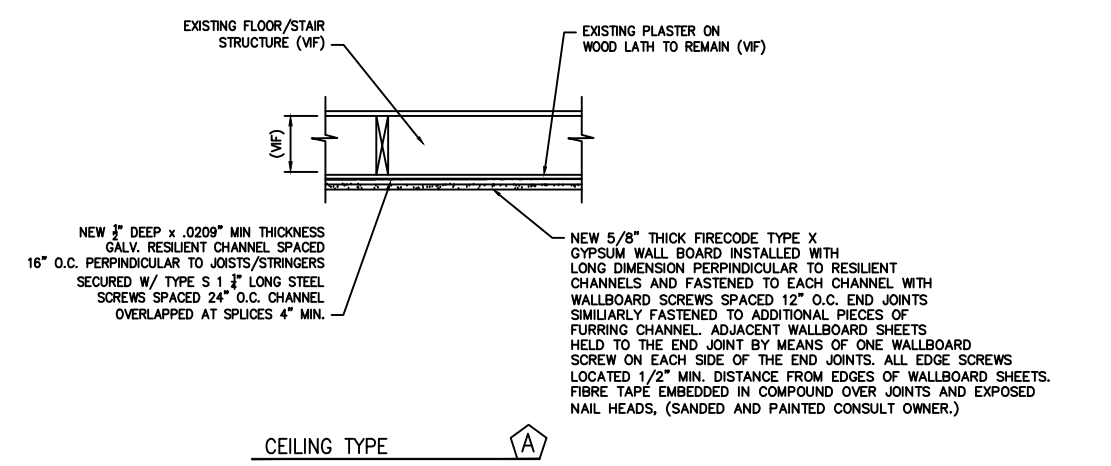
WALL TYPE 12



WALL TYPE - INTERIOR 13



CEILING TYPE B
U.L. DESIGN L503
1 HOUR RATED



CEILING TYPE A

WALL TYPES

CEILING TYPES

BTZ CHAIM SYNAGOGUE
267 CONGRESS STREET
PORTLAND, MAINE
WALL TYPES