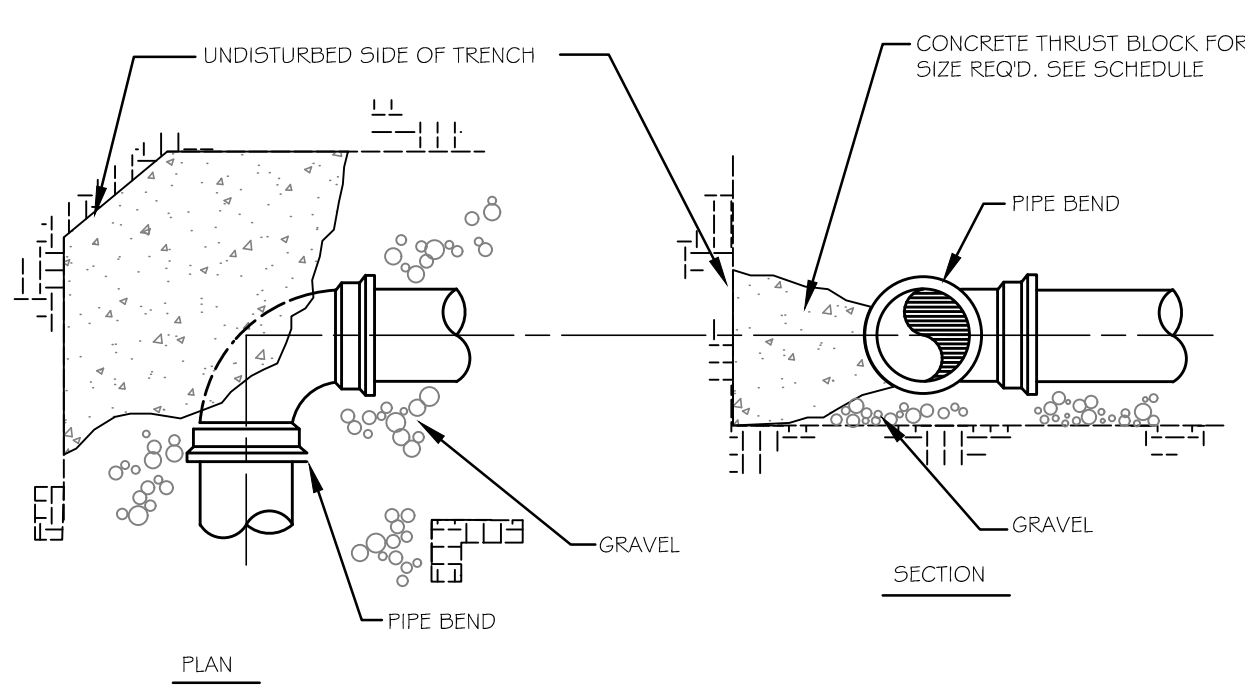


THRUST BLOCK PLACEMENT AT TEE(S)

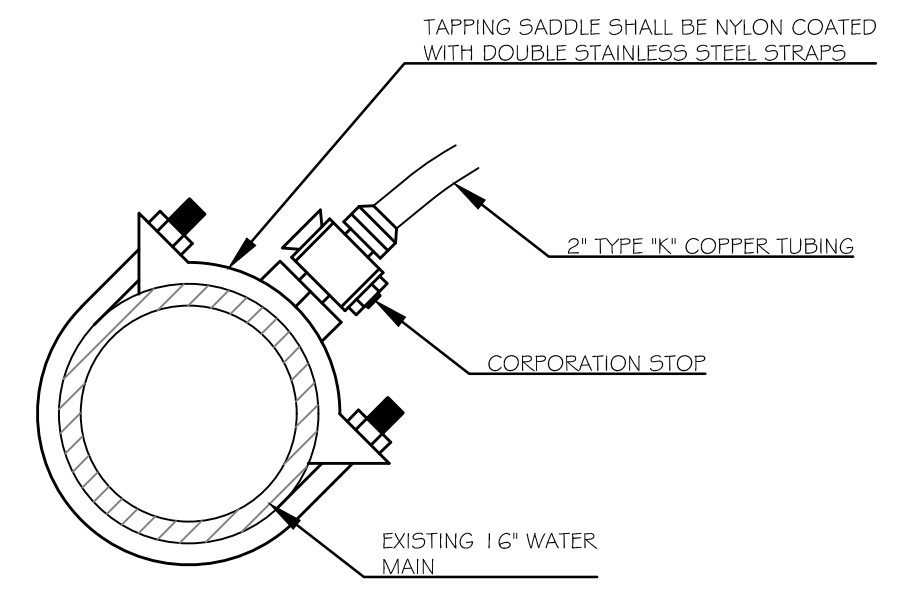


THRUST BLOCK PLACEMENT AT BEND(S)

SIZE REQUIREMENTS FOR CONCRETE THRUST BLOCKS

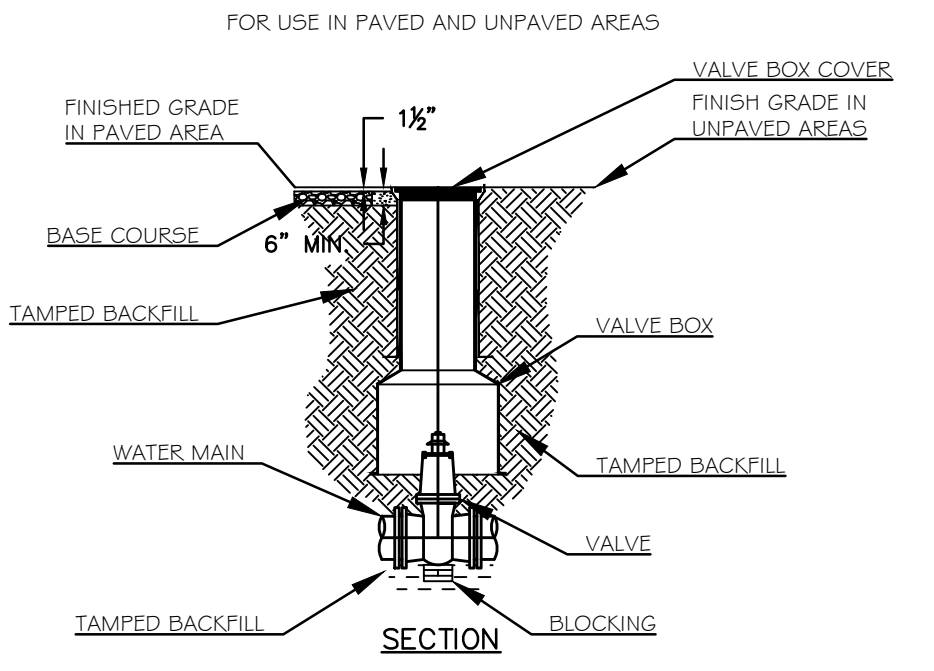
		BEARING ON UNDISTURBED SOIL (SQUARE FT.)			
FITTINGS		90° BENDS	45° BENDS	TEES & PLUGS	HYDRANTS
PIPE SIZE	4"	2.0	1.0	1.0	N/A
	6"	3.0	2.0	2.0	6.0
	8"	5.0	3.0	4.0	N/A

THRUST BLOCK SCHEDULE



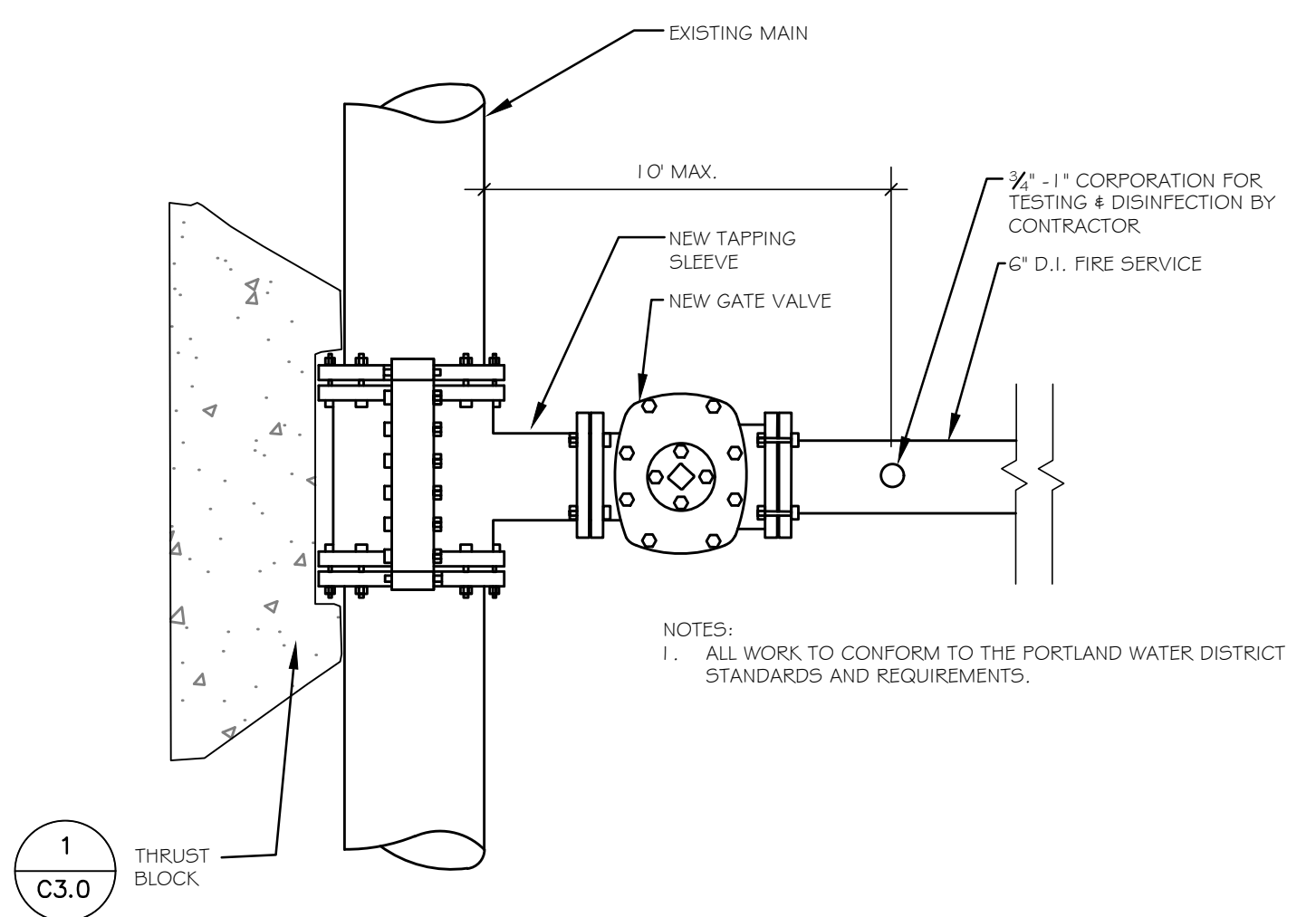
2 STANDARD CORPORATION STOP DETAIL
C3.0 NOT TO SCALE

1 THRUST BLOCK DETAILS
C3.0 NOT TO SCALE



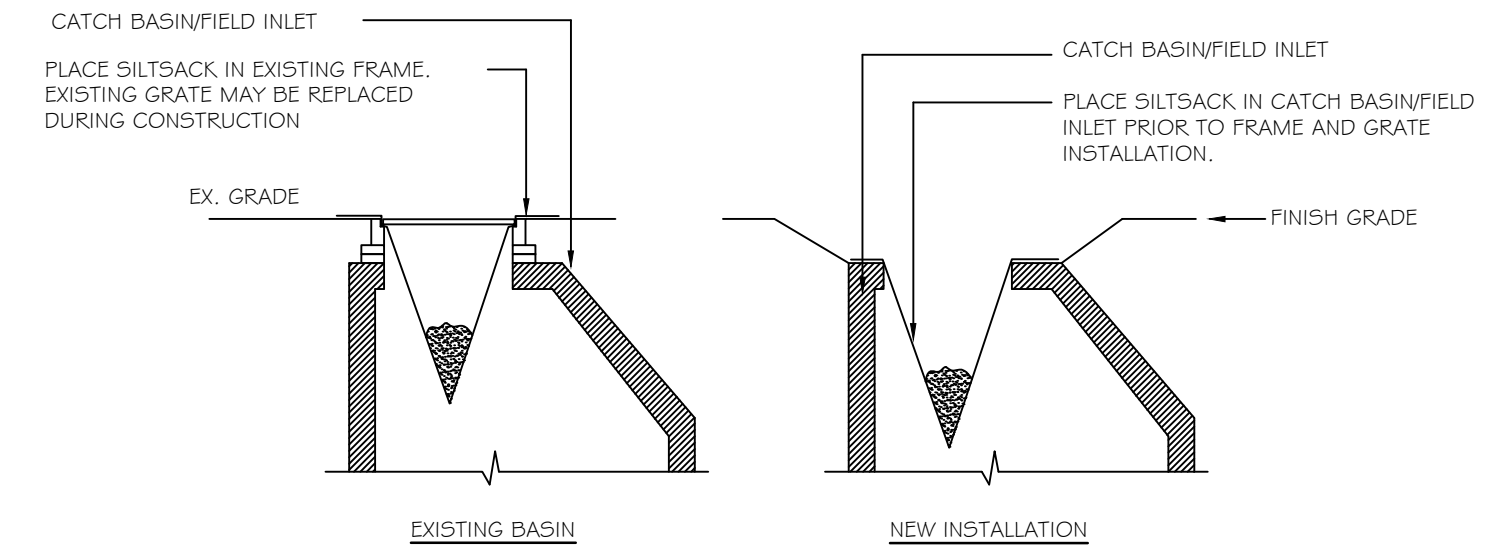
- NOTES:
1. ALL WORK TO CONFORM TO THE PORTLAND WATER DISTRICT STANDARDS AND REQUIREMENTS.
 2. D.I.P. MAY BE USED FOR VALVE BOX EXTENSIONS.
 3. VALVE BOX SHOULD NOT CONTACT WATER MAIN OR VALVE.
 4. CONCRETE PROTECTOR RING SHALL BE USED IN ALL UNPAVED AREAS.

3 VALVE AND VALVE BOX INSTALLATION DETAIL
C3.0 NOT TO SCALE



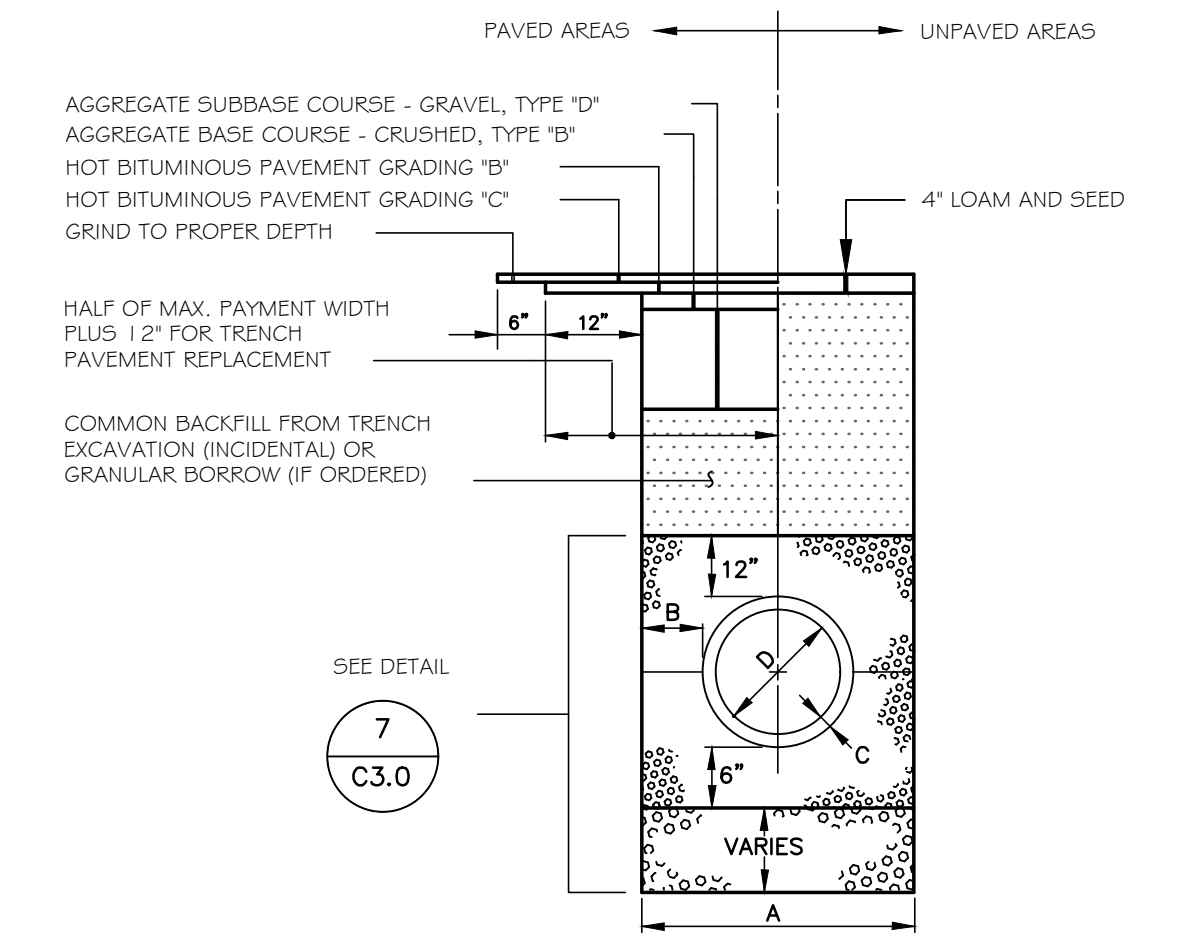
- NOTES:
1. ALL WORK TO CONFORM TO THE PORTLAND WATER DISTRICT STANDARDS AND REQUIREMENTS.

4 STANDARD TAPPING SLEEVE DETAIL
C3.0 NOT TO SCALE

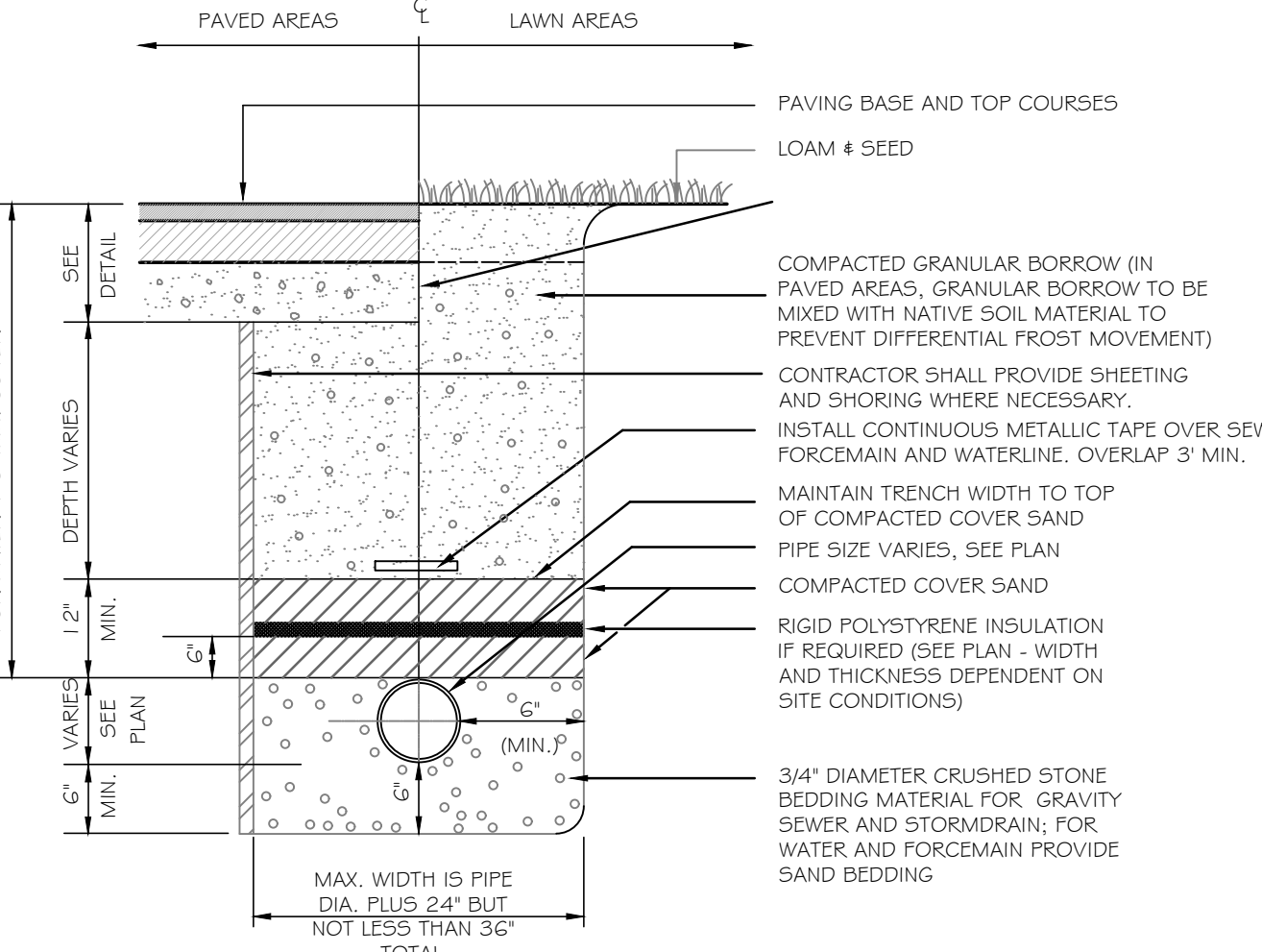


- NOTE:
1. INSTALLATION PER MANUFACTURER'S INSTRUCTIONS AND RECOMMENDATIONS.
 2. EMPTY AND REMOVE SEDIMENT FROM SILTSACK WHEN RESTRAINT CORD IS NO LONGER VISIBLE. CLEAN, RINSE AND REPLACE AS NEEDED.
 3. CONTRACTOR SHALL INSPECT CATCH BASIN PROTECTION AFTER EACH MAJOR STORM EVENT AND CLEAN SILT AS NEEDED.
 4. ROUND SILT-SACKS SHALL BE USED FOR ROUND CATCH BASIN GRATES.

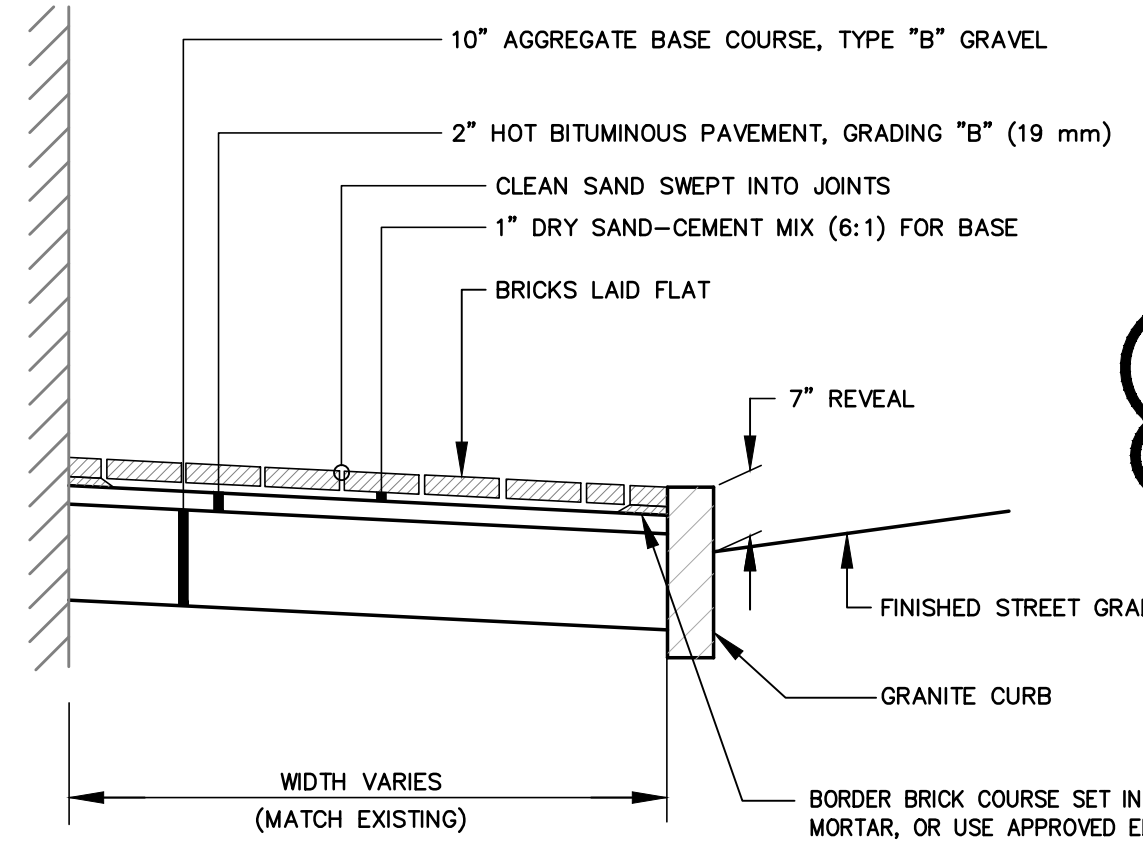
5 CATCH BASIN PROTECTION DETAIL
C4.0 NOT TO SCALE



7 TYPICAL ROAD REPAIR DETAIL
C3.0 NOT TO SCALE



7 TYPICAL PIPE TRENCHING DETAIL
C3.0 NOT TO SCALE

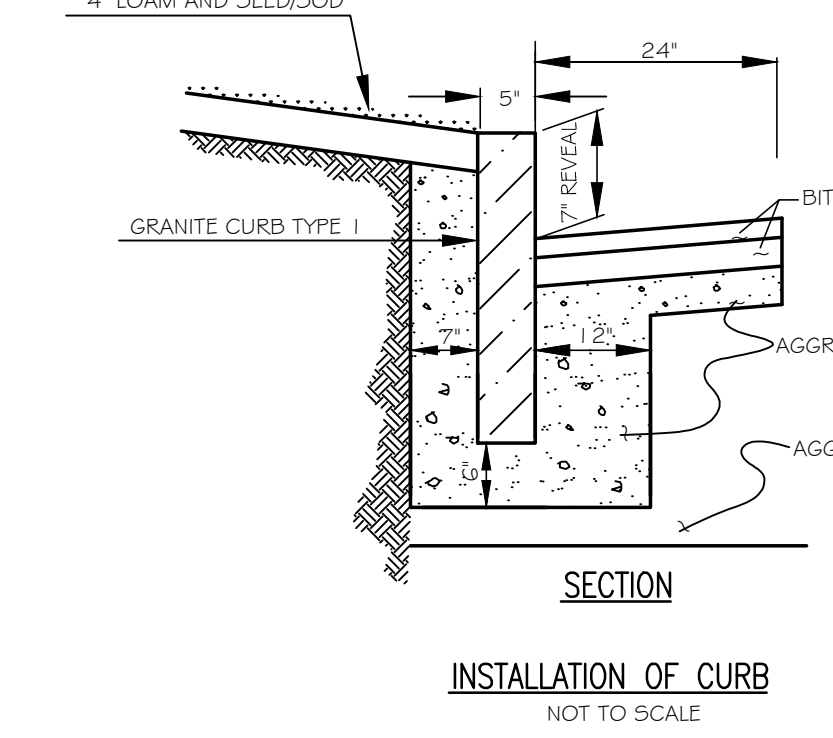
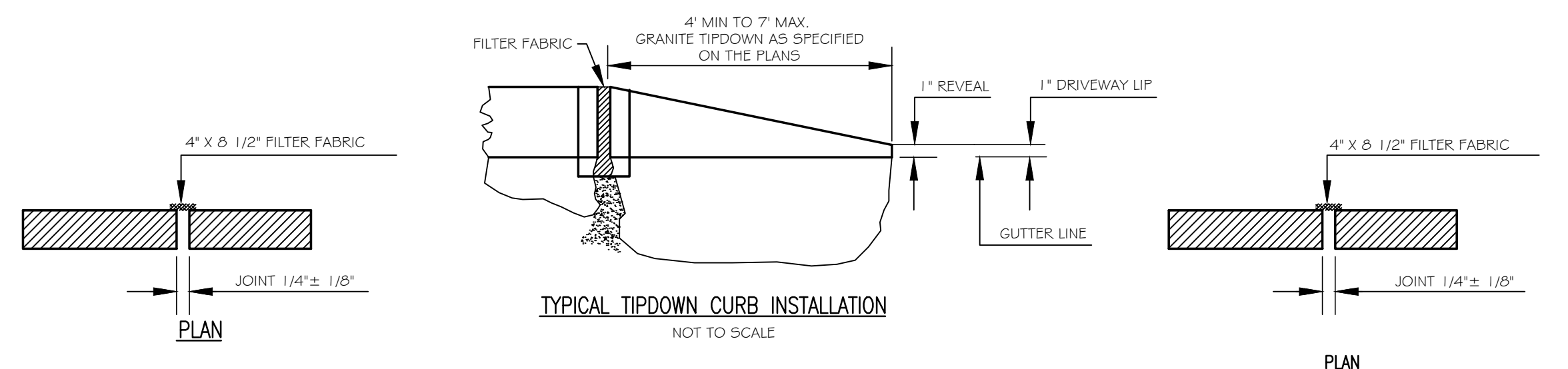


8 BRICK SIDEWALK WITH BITUMINOUS BASE
C3.0 NOT TO SCALE

BRICKS TO BE USED:

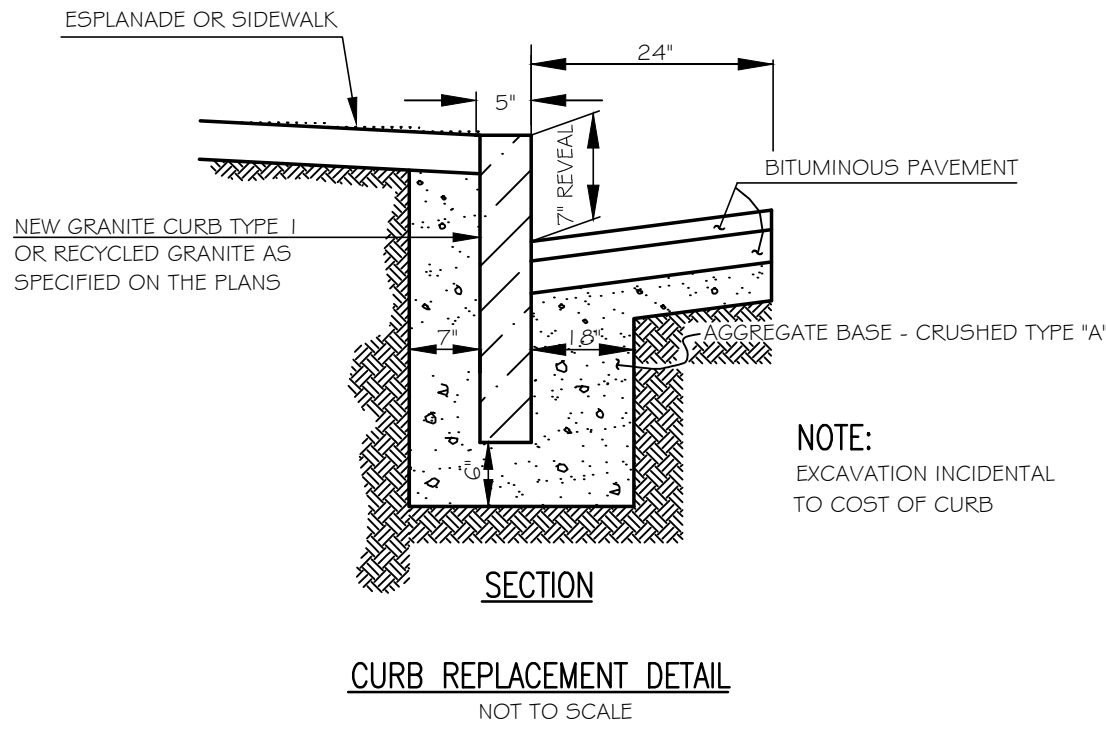
NEW CONSTRUCTION:
4"x8" PINE HALL PATHWAY PAVER BRICK; MFG. BY PINE HALL BRICK CO., MADISON, NORTH CAROLINA. LACHANCE ITEM # 193623, PINE HALL PATHWAY PAVER BRICK.

REPAIR / MAINTENANCE TO EXISTING BRICK SIDEWALKS: VERMONT PAVER; SUPPLIED BY GAGNE AND SONS. SPECIFICATION NUMBER: 'VERMONT BACKER BRICK'; ITEM NUMBER # VB88



9 GRANITE CURB INSTALLATION DETAIL
C3.0 NOT TO SCALE

6 TYPICAL ROAD REPAIR DETAIL
C3.0 NOT TO SCALE



7 TYPICAL ROAD REPAIR DETAIL
C3.0 NOT TO SCALE

East End Lofts
279 Congress Street
Portland, Maine
Clean and Simple Living, Inc.
315 16th Street
Boulder, CO 80302

Rev.	Date	Description	Drawn	Check
1	11/3/15	Issued for Level III Site Plan Review	SWC	NGC
2	1/5/16	Revised Per City Comments	SWC	NGC

Sheet Title:
Details
(Sheet 1 of 2)

Job No.:	310	Sheet No.:	
Date:	Nov. 3, 2015		
Scale:	N.T.S.		
Drawn:	SWC		
Checked:	NGC		

C3.0