

Building Area Summary	Proposed	Existing
Footprint:	6,078sf	6,078sf
Second Floor Gross:	5,630sf	5,630sf
Third Floor Gross:	919sf	919sf
Gross Building Area:	12,627sf	12,627f

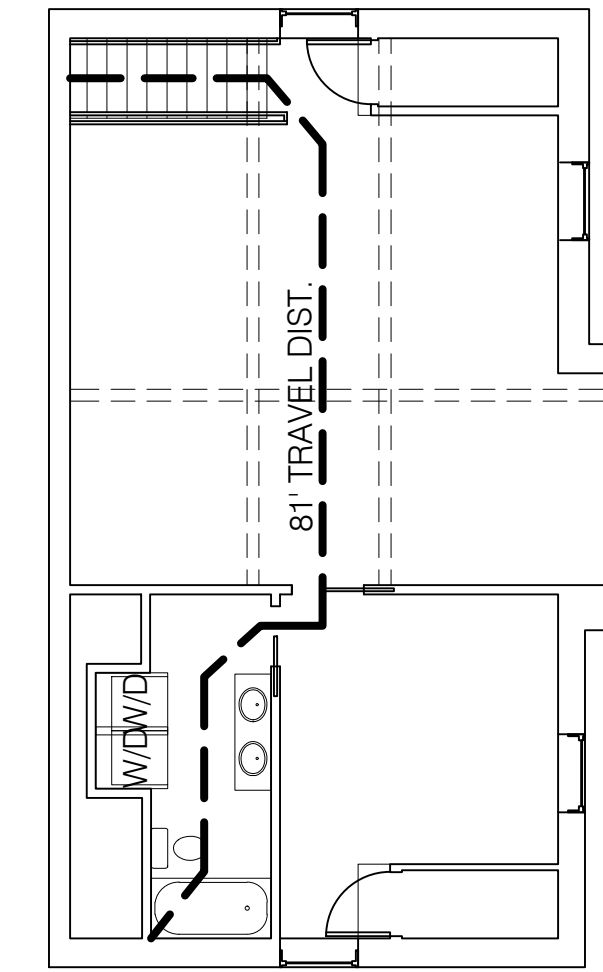
Retail net:	2,290sf	2,551sf
Residential gross:	7,384sf	705sf
Storage: (bike area)	248sf	0sf
Parking: (back area)	836sf	0sf
Light industrial (wood shop)	0sf	2,376sf
Office	0sf	4,66sf
Mechanical Room	317sf	317sf

General Code Summary
 Level 3 Building Alteration
 Change of Occupancy
 Sprinkler system does not exist but will be installed, including attic

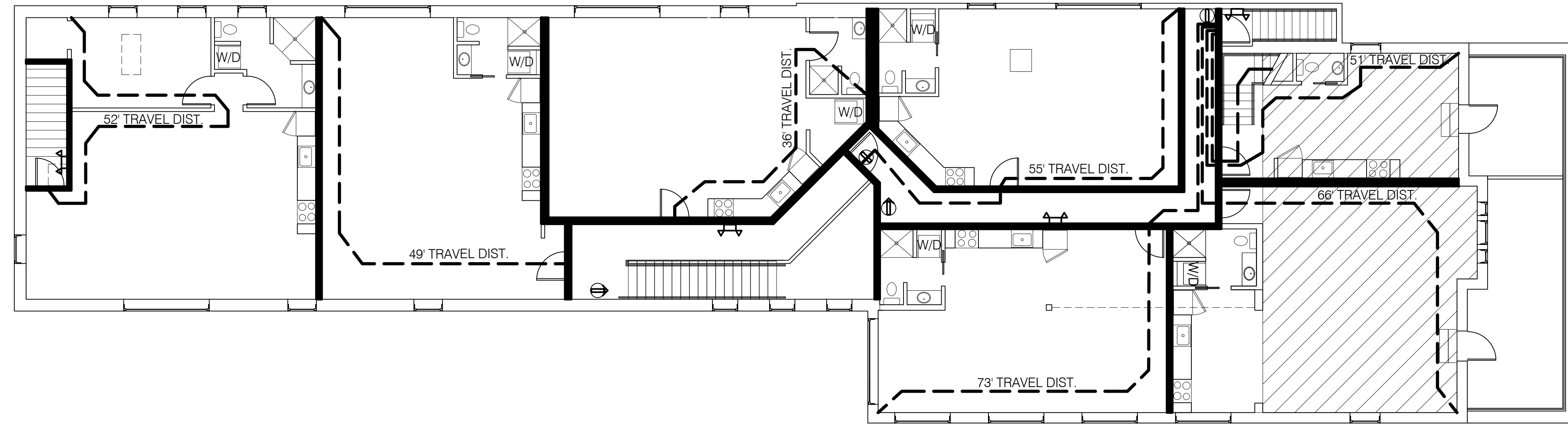
Code Summary Table:	IBC	NFPA
Existing Uses	R-3, B, I, M	Residence, Mercantile, business
Proposed Uses	R-2, U, M	Residence, Mercantile, Storage
Construction Type	VB	VB
Occupancy Load	129 occupants	124 occupants

KEY

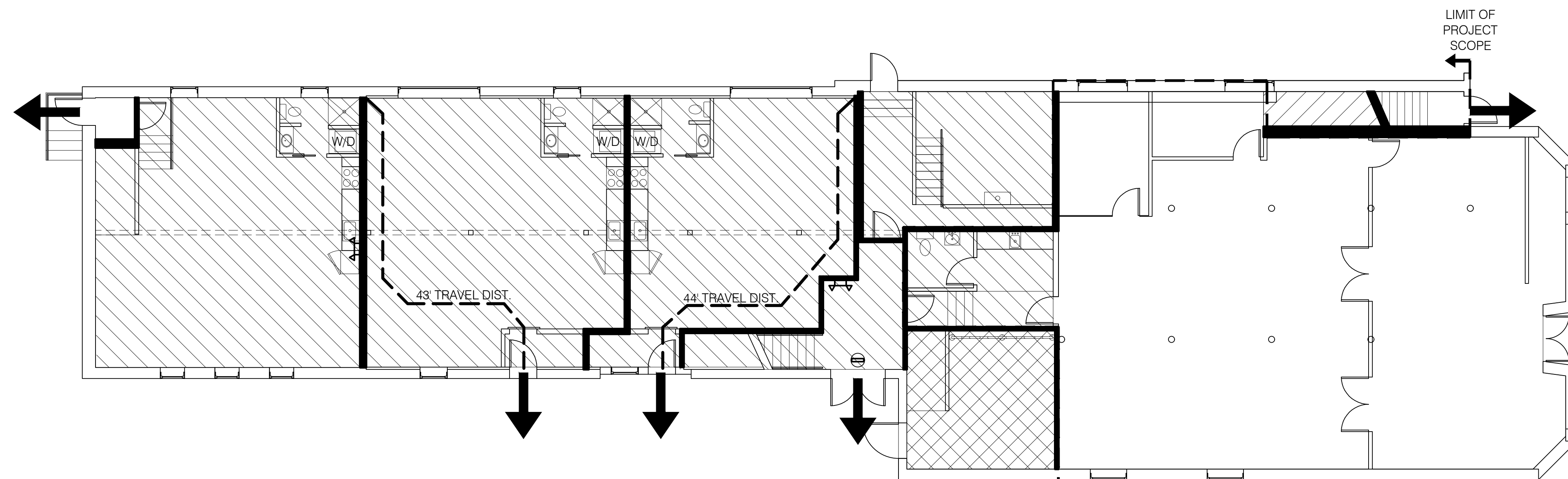
- EMERGENCY LIGHTING
- EXIT SIGN
- EXIT DISCHARGE
- EXISTING 1 HR CEILING TO REMAIN AND BE REPAIRED IF REQUIRED
- PROPOSED 1 HR RATED CEILING ASSEMBLY
- EXISTING AND PROPOSED 1 HR WALLS (SEE WALL TYPES)



20
 G1.01.1 0 8'-0" SCALE: 1/8" = 1'-0"
THIRD FLOOR LIFE SAFETY PLAN



20
 G1.01.1 0 8'-0" SCALE: 1/8" = 1'-0"
SECOND FLOOR LIFE SAFETY PLAN



10
 G1.01.1 0 8'-0" SCALE: 1/8" = 1'-0"
FIRST FLOOR LIFE SAFETY PLAN