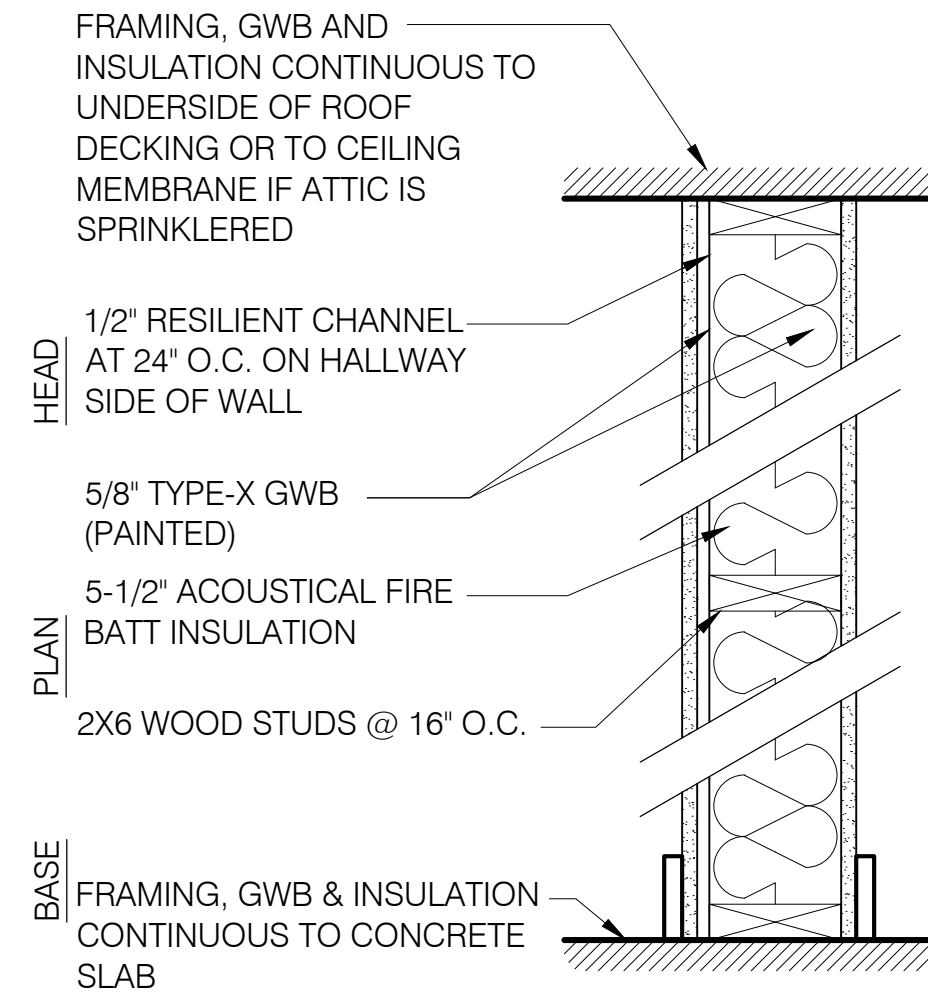


A2 2X2 WOOD FRAMING ACOUSTICAL WALL
(2X4 ON SIDE MAY ALSO BE USED)
2 3/4" ACTUAL WALL THICKNESS

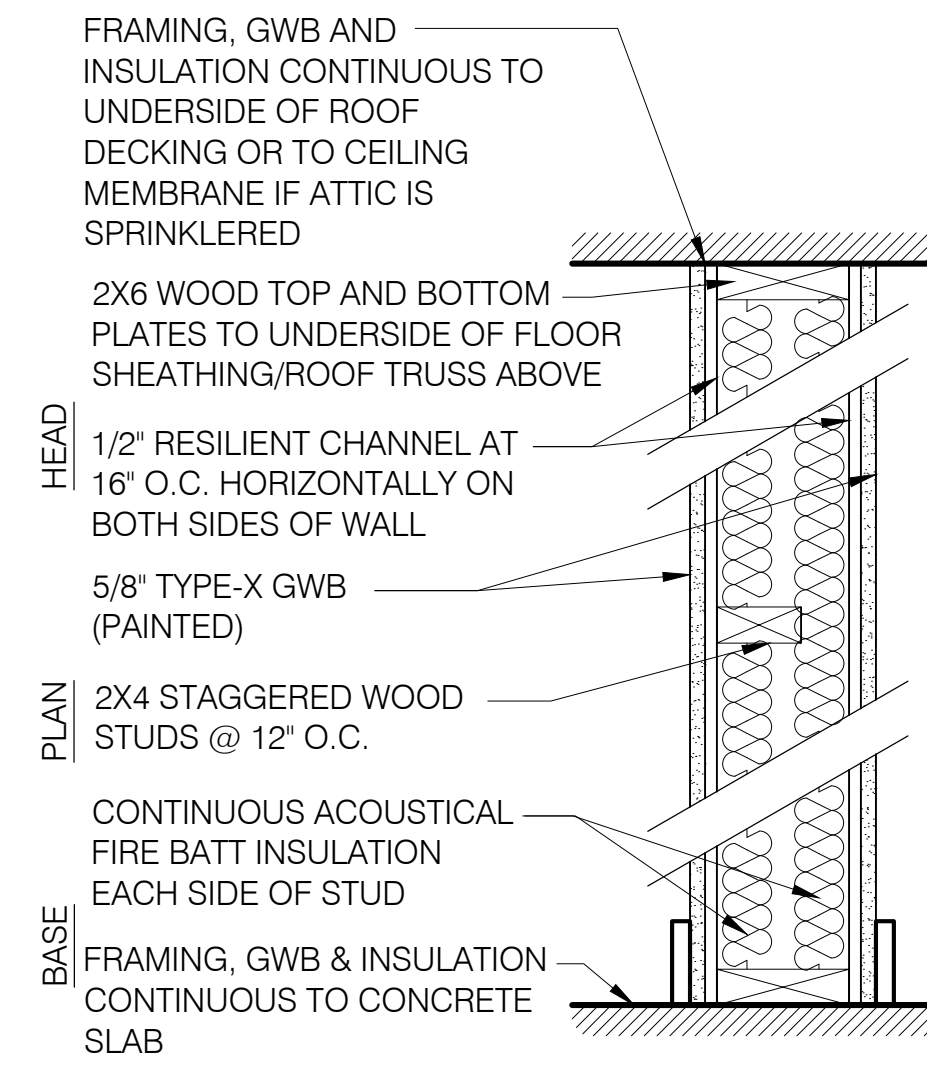
A4 2X4 WOOD FRAMING ACOUSTICAL WALL
4 3/4" ACTUAL WALL THICKNESS

AX SEE PLAN FOR TOTAL WALL THICKNESS
X ACTUAL WALL THICKNESS



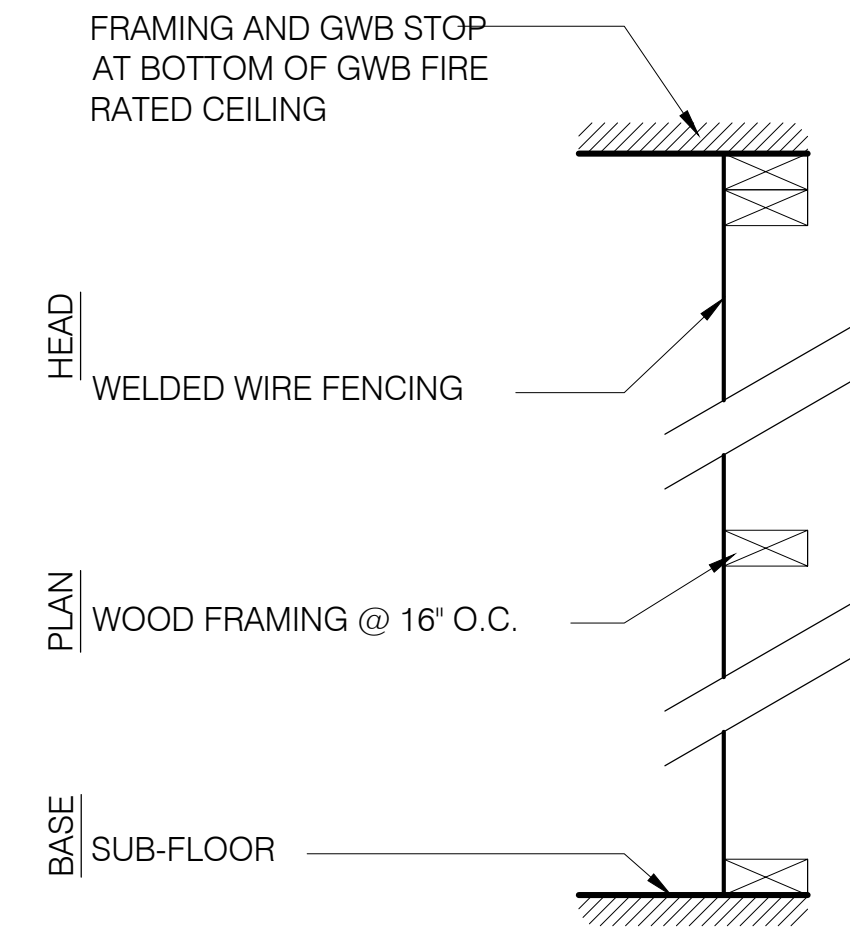
1A 2X6 WOOD FRAMING FIRE WALL
1 HOUR RATED UL-U311 ASSEMBLY
STC RATING: 50-54
7-1/4" ACTUAL WALL THICKNESS

NOTE:
PENETRATIONS, JOINTS, OPENINGS, AND DUCTS INTERRUPTING ANY FIRE RATED ASSEMBLY SHALL CONFORM WITH IBC CHAPTER 7.

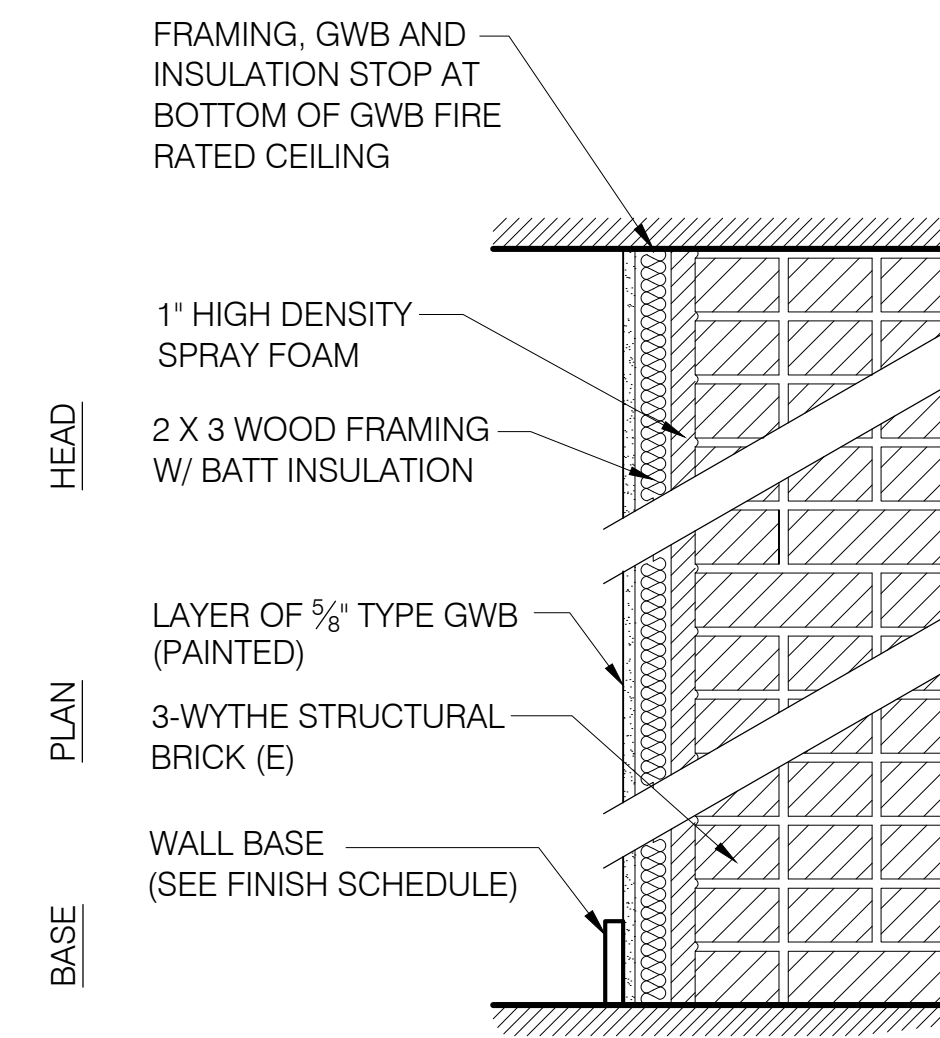


1B 2X4 WOOD FRAMING FIRE WALL
1 HOUR RATED UL-340 ASSEMBLY
STC RATING: 54
7-3/4" ACTUAL WALL THICKNESS

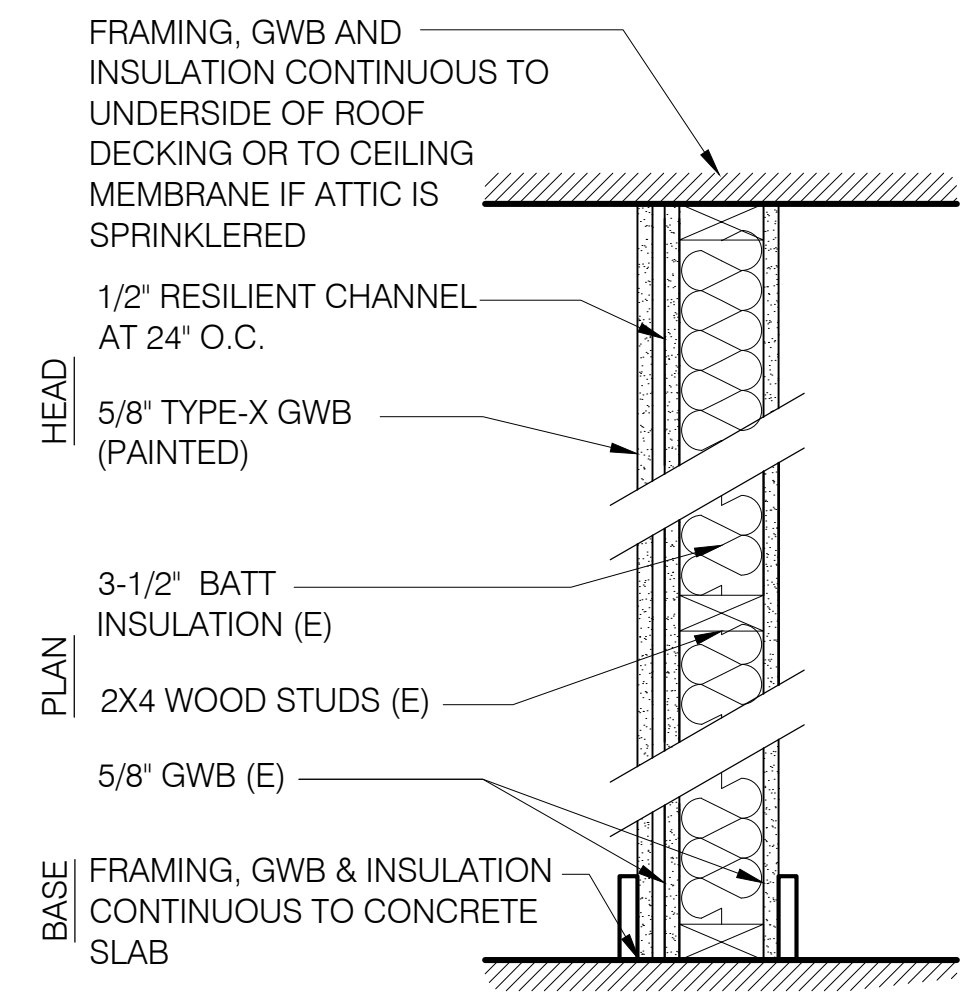
NOTE:
PENETRATIONS, JOINTS, OPENINGS, AND DUCTS INTERRUPTING ANY FIRE RATED ASSEMBLY SHALL CONFORM WITH IBC CHAPTER 7.



B4 2X4 STORAGE PARTITION WALL
3 1/2" ACTUAL WALL THICKNESS

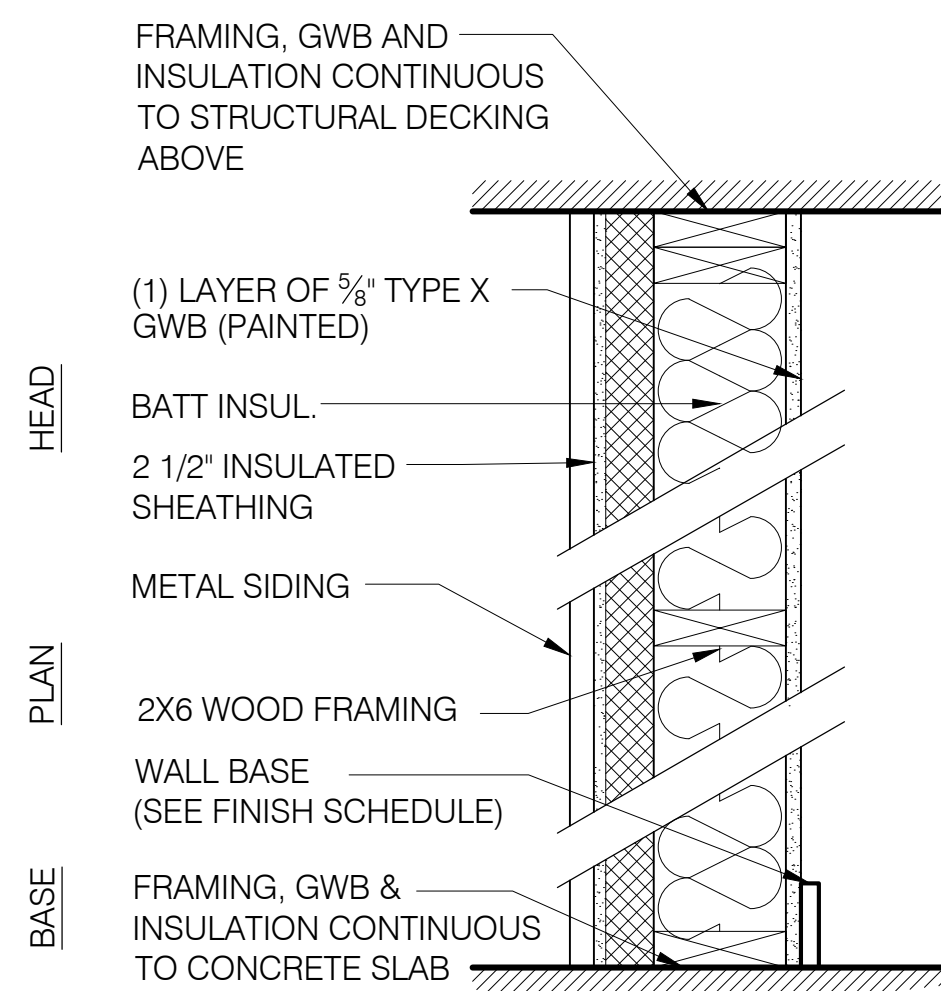


F1 FURRED EXTERIOR BRICK WALL
1'-2"+/- ACTUAL WALL THICKNESS



F2 FURRED FIRE WALL
6" ACTUAL WALL THICKNESS

NOTE:
PENETRATIONS, JOINTS, OPENINGS, AND DUCTS INTERRUPTING ANY FIRE RATED ASSEMBLY SHALL CONFORM WITH IBC CHAPTER 7.



W1 2X6 EXTERIOR WALL
9 5/8" ACTUAL WALL THICKNESS



REVISIONS
1
2
3
4
5