

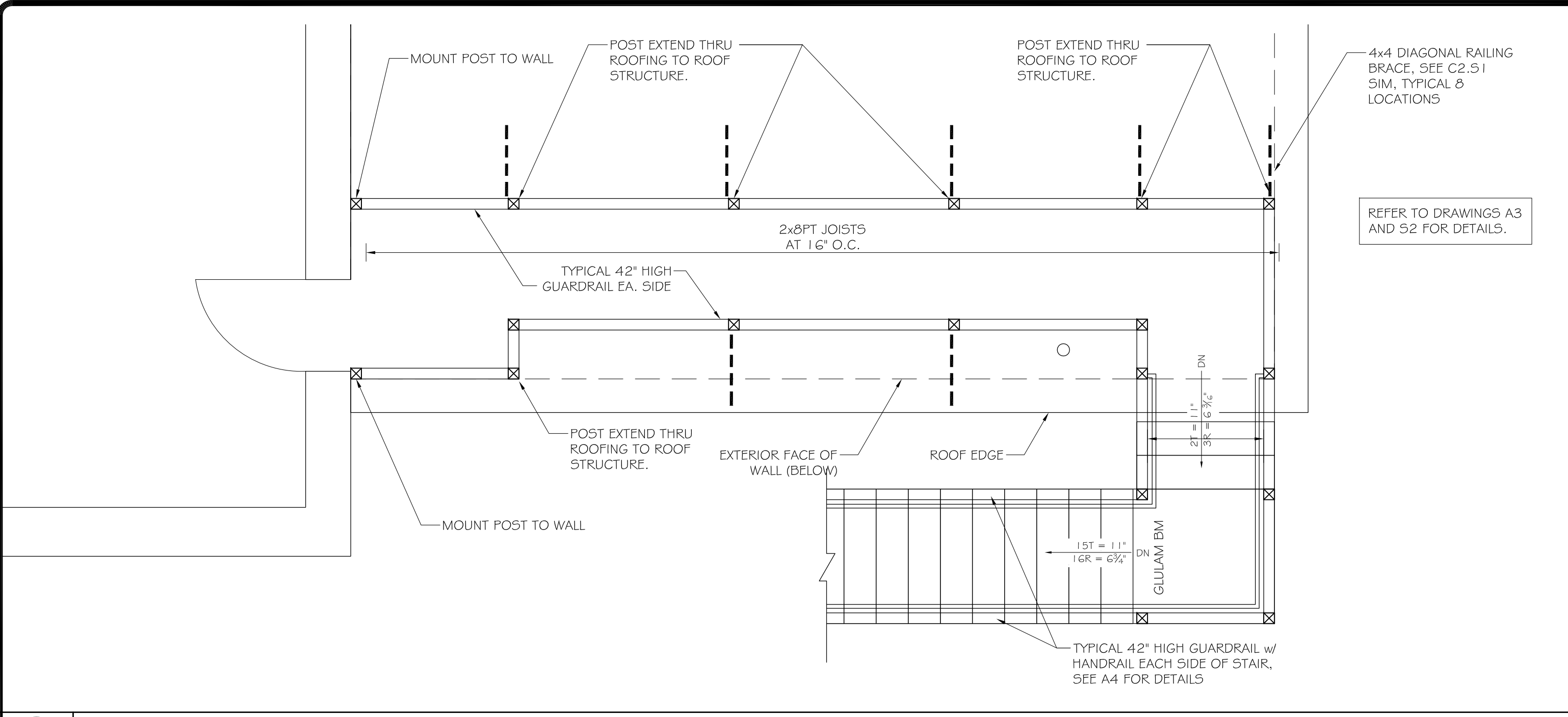
**ASSOCIATED DESIGN PARTNERS INC.**  
 Office: (207) 878-1751  
 80 Leighton Road, Falmouth, Maine 04105  
 Fax: (207) 878-1788  
 E-Mail: [adp@adpengineering.com](mailto:adp@adpengineering.com)

THIS DRAWING, DESIGN AND ELECTRONIC FILE ARE THE PROPERTY OF ASSOCIATED DESIGN PARTNERS, INC. THE REPRODUCTION, COPYING OR ANY OTHER USE OF THIS DOCUMENT WITHOUT WRITTEN CONSENT IS PROHIBITED.

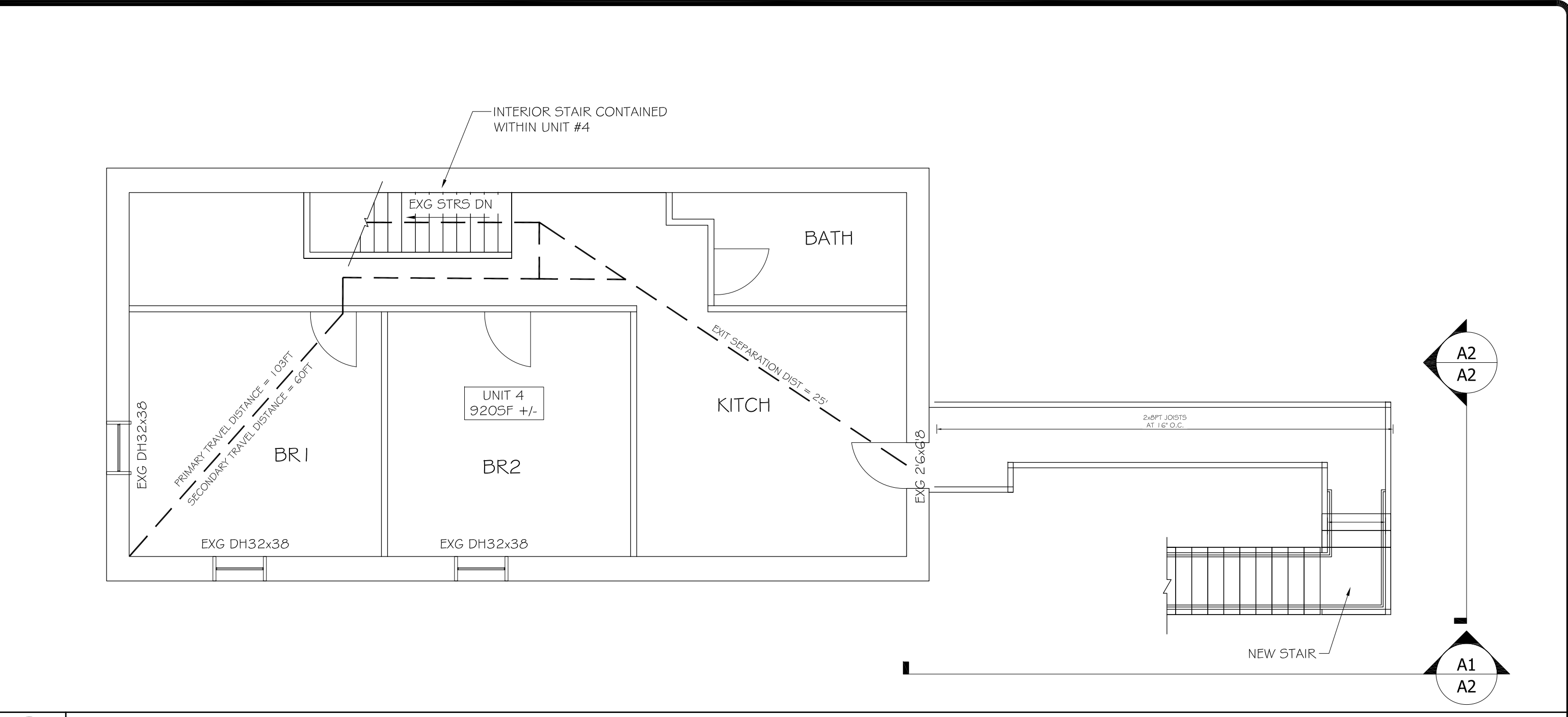
PROJECT: **158 CUMBERLAND AVE PORTLAND, MAINE**  
 SHEET TITLE: **EGRESS AND STAIR FLOOR PLANS ISSUED FOR PERMITTING**

NO.	BY	DATE	DESCRIPTION
1	ASW		
2			
3			
4			
5			

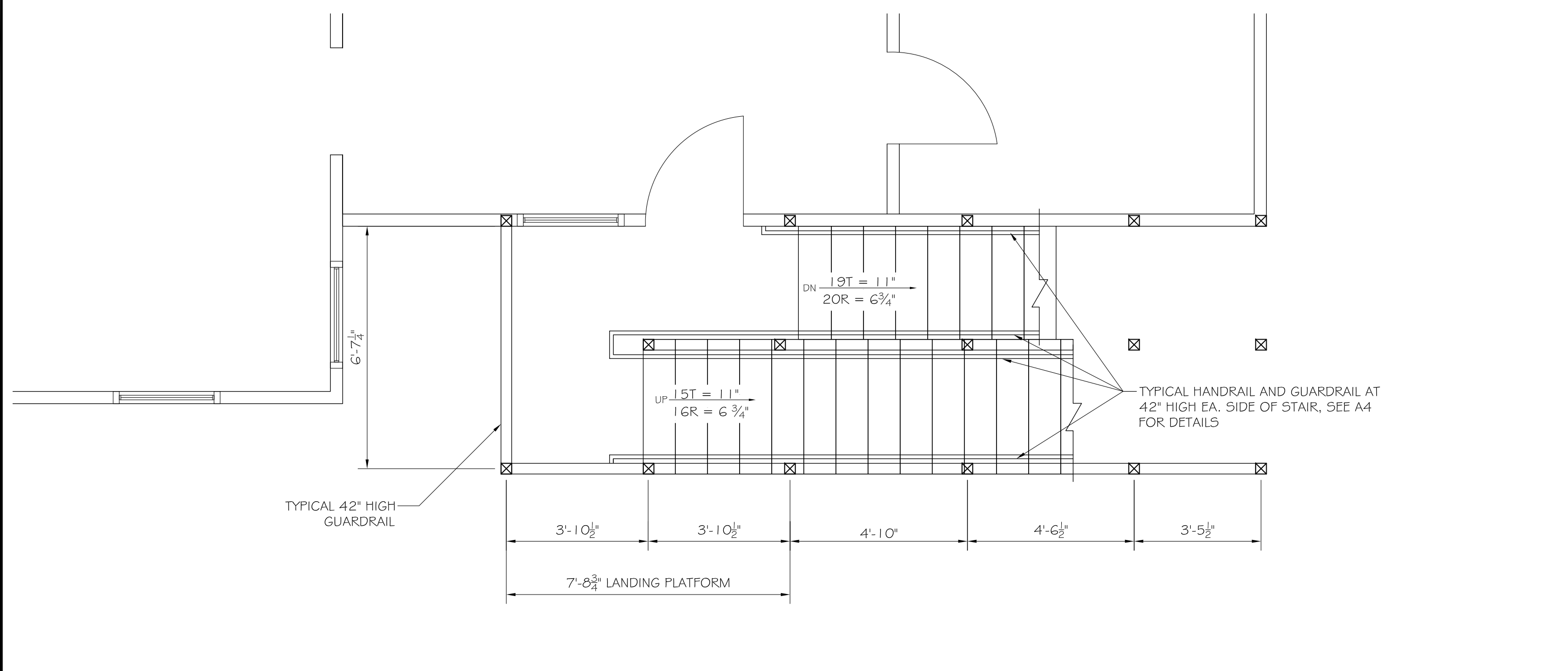
DATE: 11-18-16  
 SCALE: AS NOTED  
 DESIGN BY: ASW  
 DRAWN BY: RSC  
 PROJECT NUMBER: **16241**  
 SHEET NO: **A1**



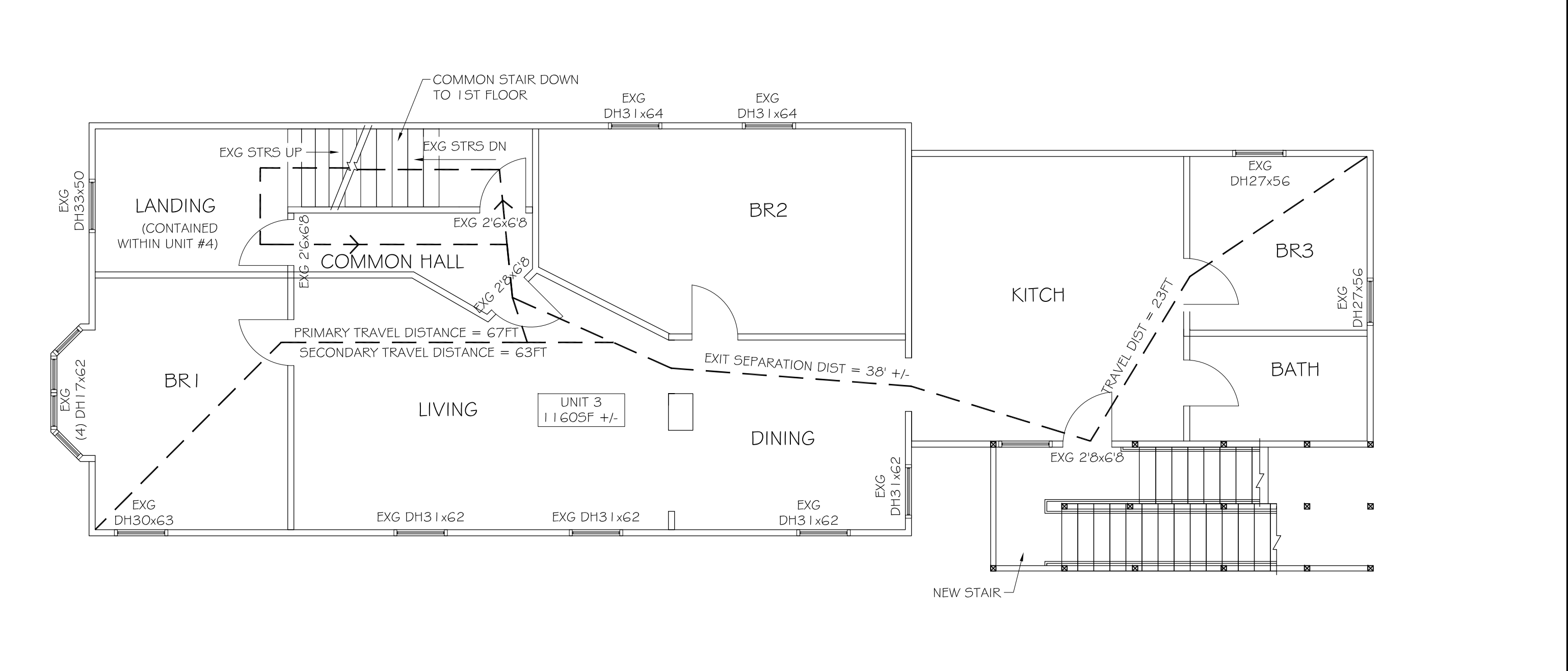
**C2 3RD FLOOR EGRESS STAIR PLAN**  
 SCALE: 3/8" = 1'-0"



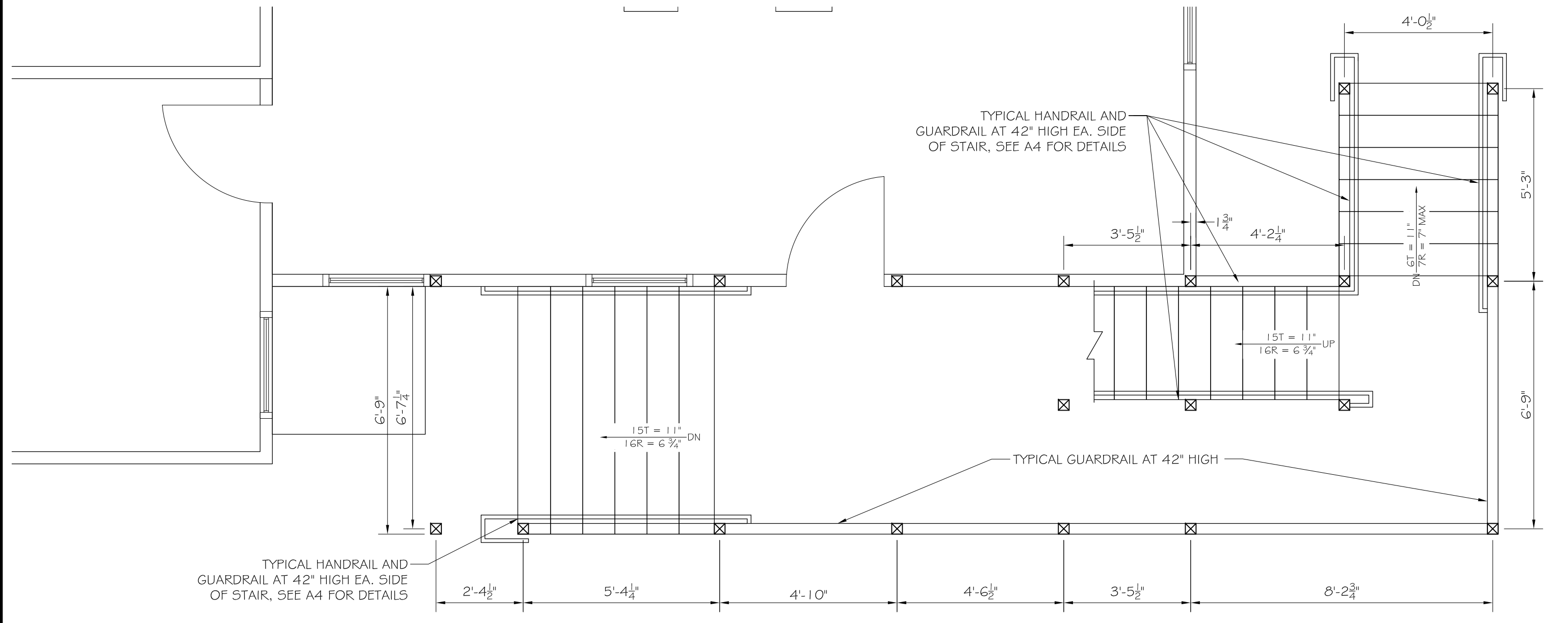
**C1 3RD FLOOR EGRESS PLAN**  
 SCALE: 3/8" = 1'-0"



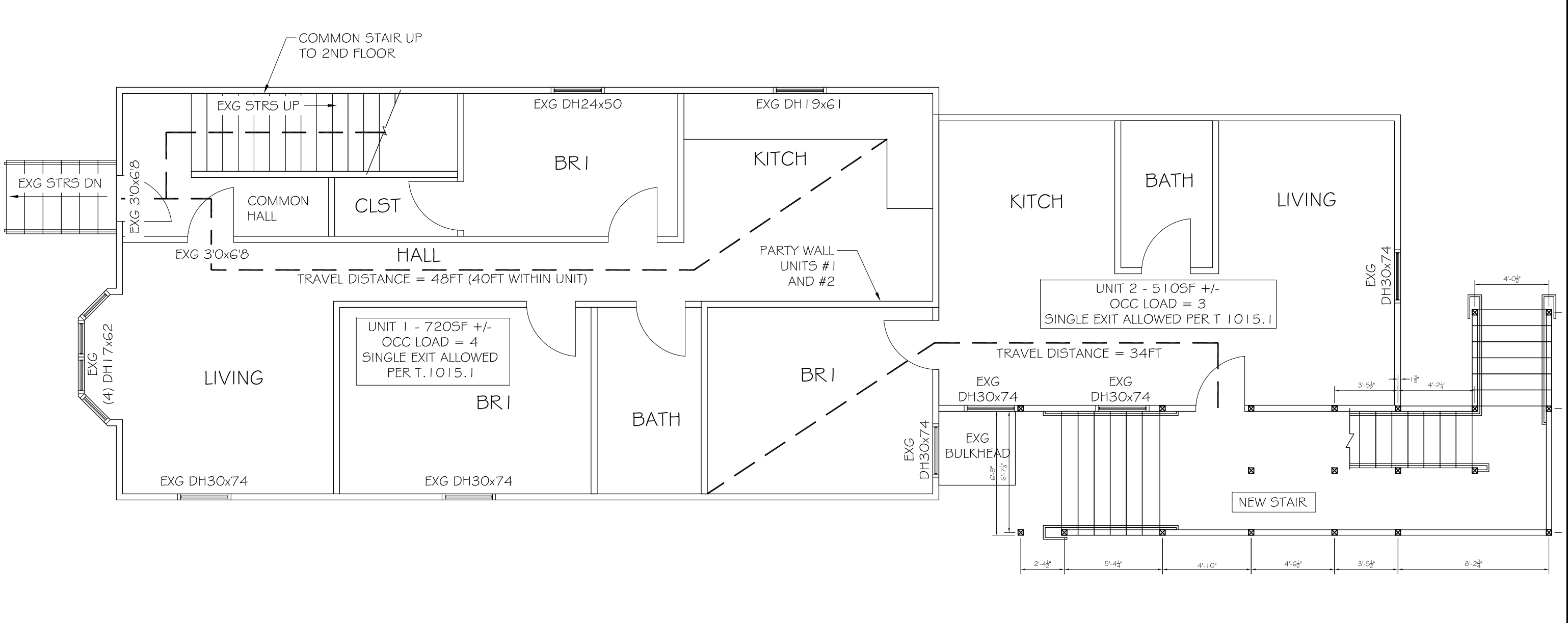
**B2 2ND FLOOR EGRESS STAIR PLAN**  
 SCALE: 3/8" = 1'-0"



**B1 2ND FLOOR EGRESS PLAN**  
 SCALE: 3/8" = 1'-0"



**A2 1ST FLOOR NEW EGRESS STAIR PLAN**  
 SCALE: 3/8" = 1'-0"



**A1 1ST FLOOR EGRESS PLAN**  
 SCALE: 3/8" = 1'-0"