

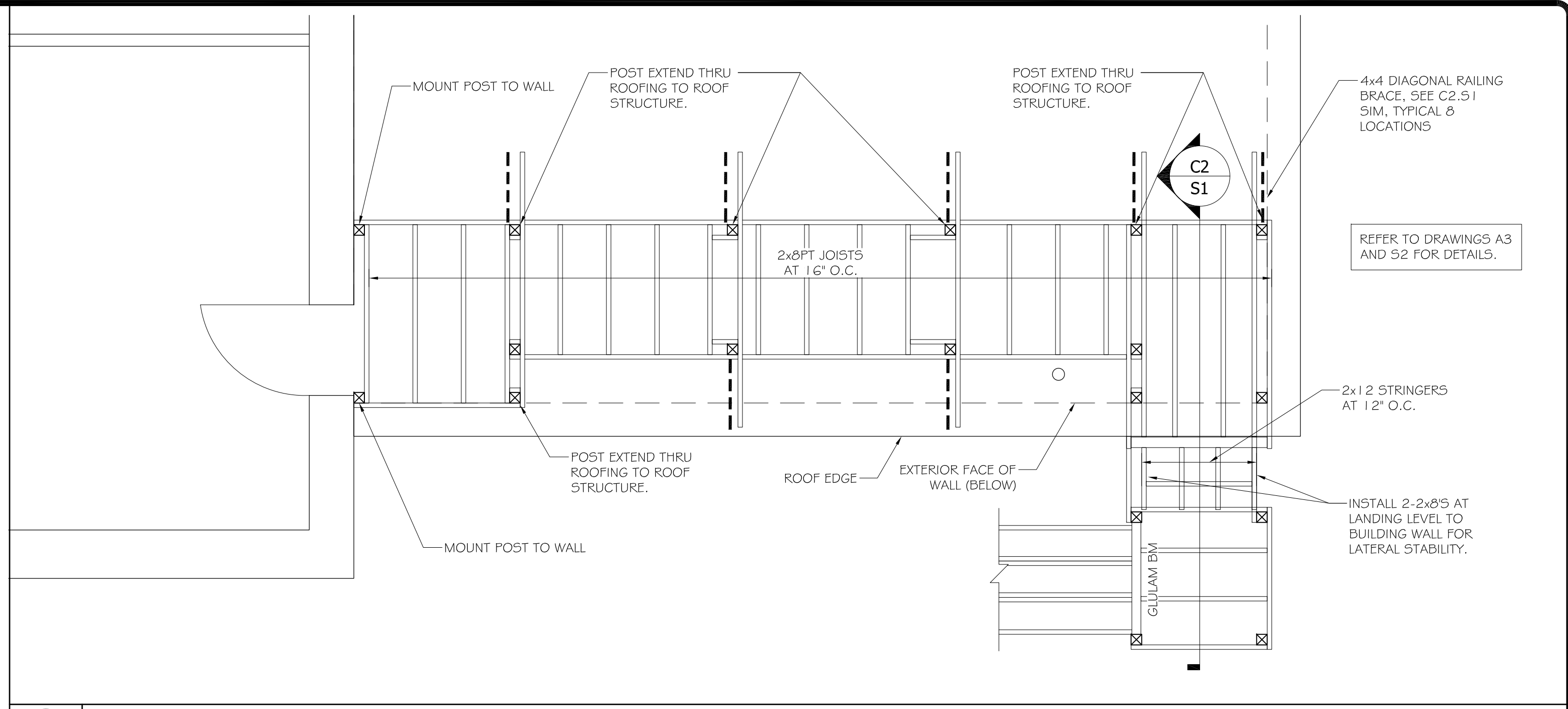
**ASSOCIATED DESIGN PARTNERS INC.**  
 80 Leighton Road  
 Falmouth, Maine 04105  
 Office: (207) 878-1751  
 Fax: (207) 878-1788  
 E-Mail: [adp@adpengineering.com](mailto:adp@adpengineering.com)

THIS DRAWING, DESIGN AND ELECTRONIC FILE ARE THE PROPERTY OF ASSOCIATED DESIGN PARTNERS, INC. THE REPRODUCTION, COPYING OR ANY OTHER USE OF THIS DOCUMENT WITHOUT WRITTEN CONSENT IS PROHIBITED.

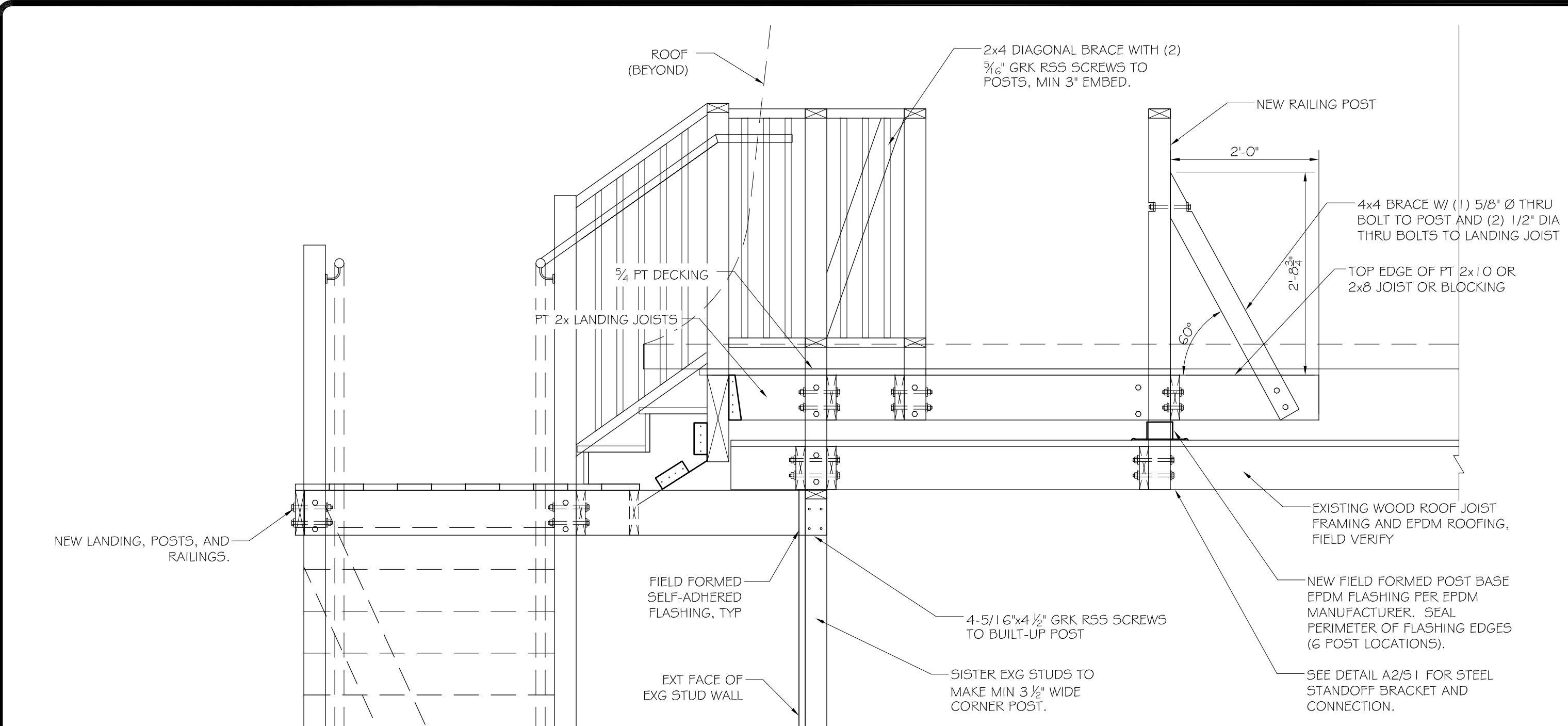
PROJECT: **158 CUMBERLAND AVE**  
**PORTLAND, MAINE**  
 FOR: \_\_\_\_\_  
 SHEET TITLE: **STAIR FRAMING PLANS**  
**ISSUED FOR PERMITTING**

NO.	BY	DATE	DESCRIPTION

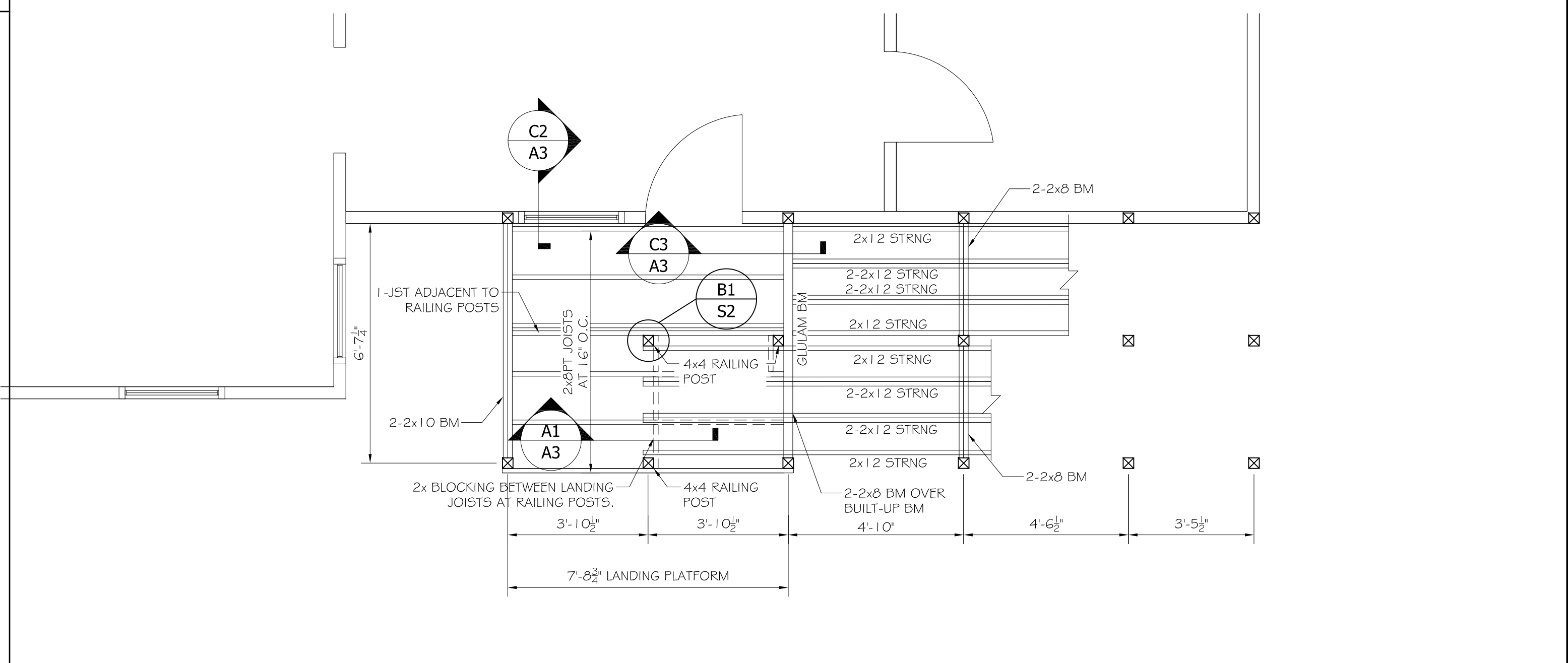
DATE : 11-18-16  
 SCALE : AS NOTED  
 DESIGN BY: ASW  
 DRAWN BY: RSC  
 FILE #:  
 PROJECT NUMBER:  
**16241**  
 SHEET NO:  
**S1**



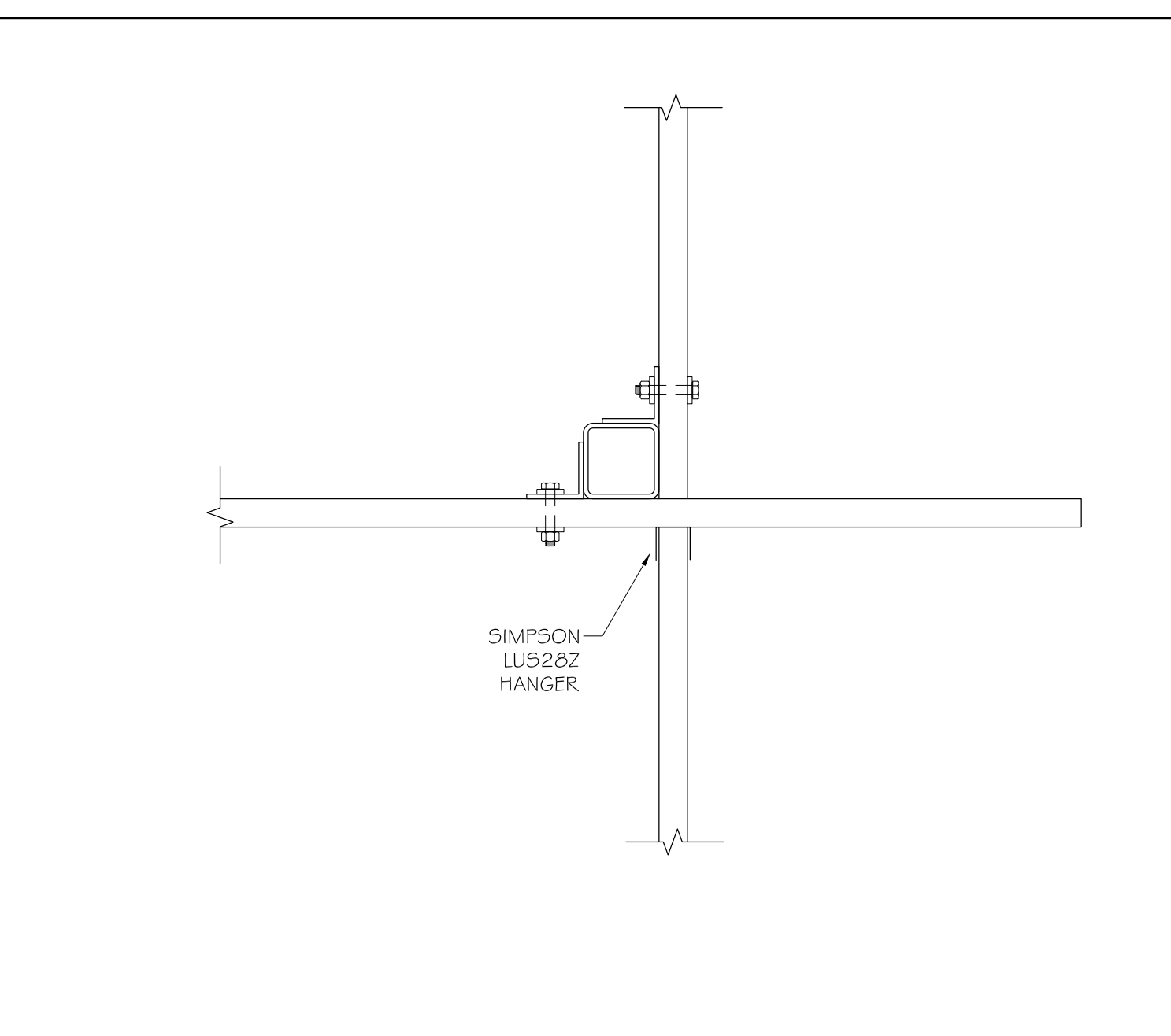
**C1** 3RD FLOOR STAIR FRAMING PLAN  
 SCALE: 3/8" = 1'-0"



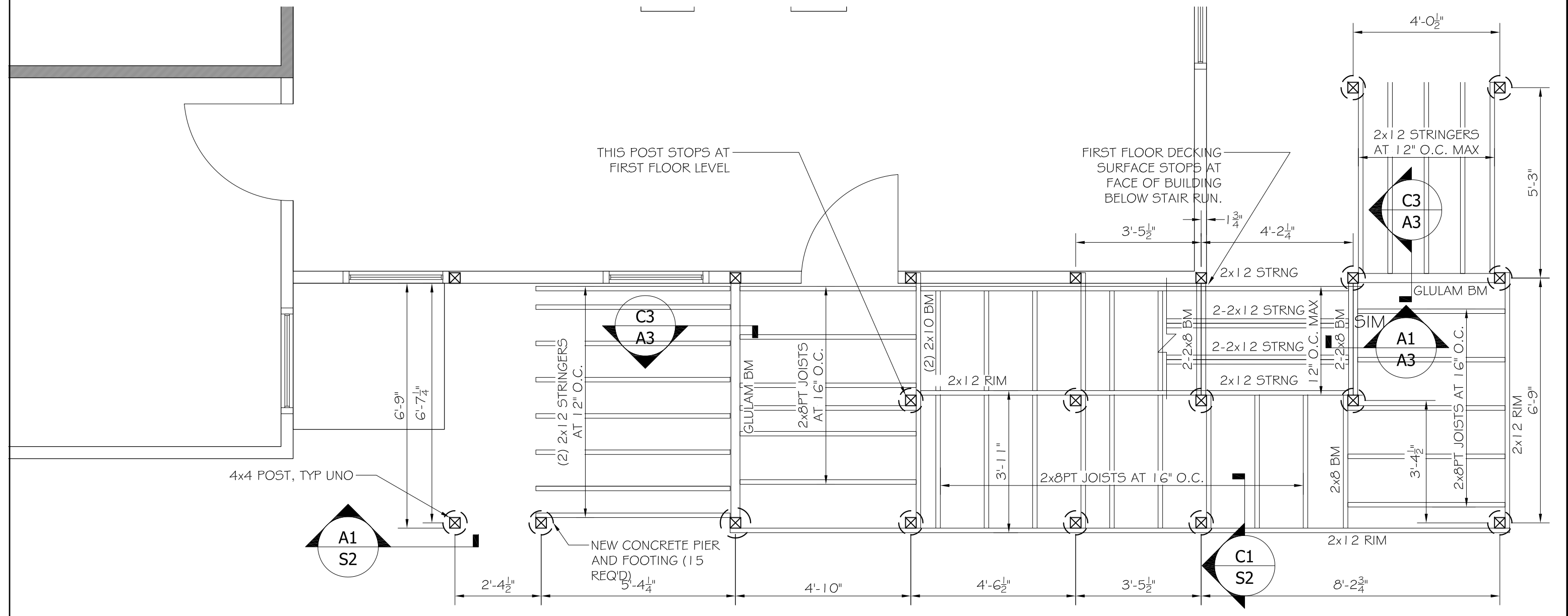
**C2** SECTION AT ROOF LEVEL  
 SCALE: 1" = 1'-0"



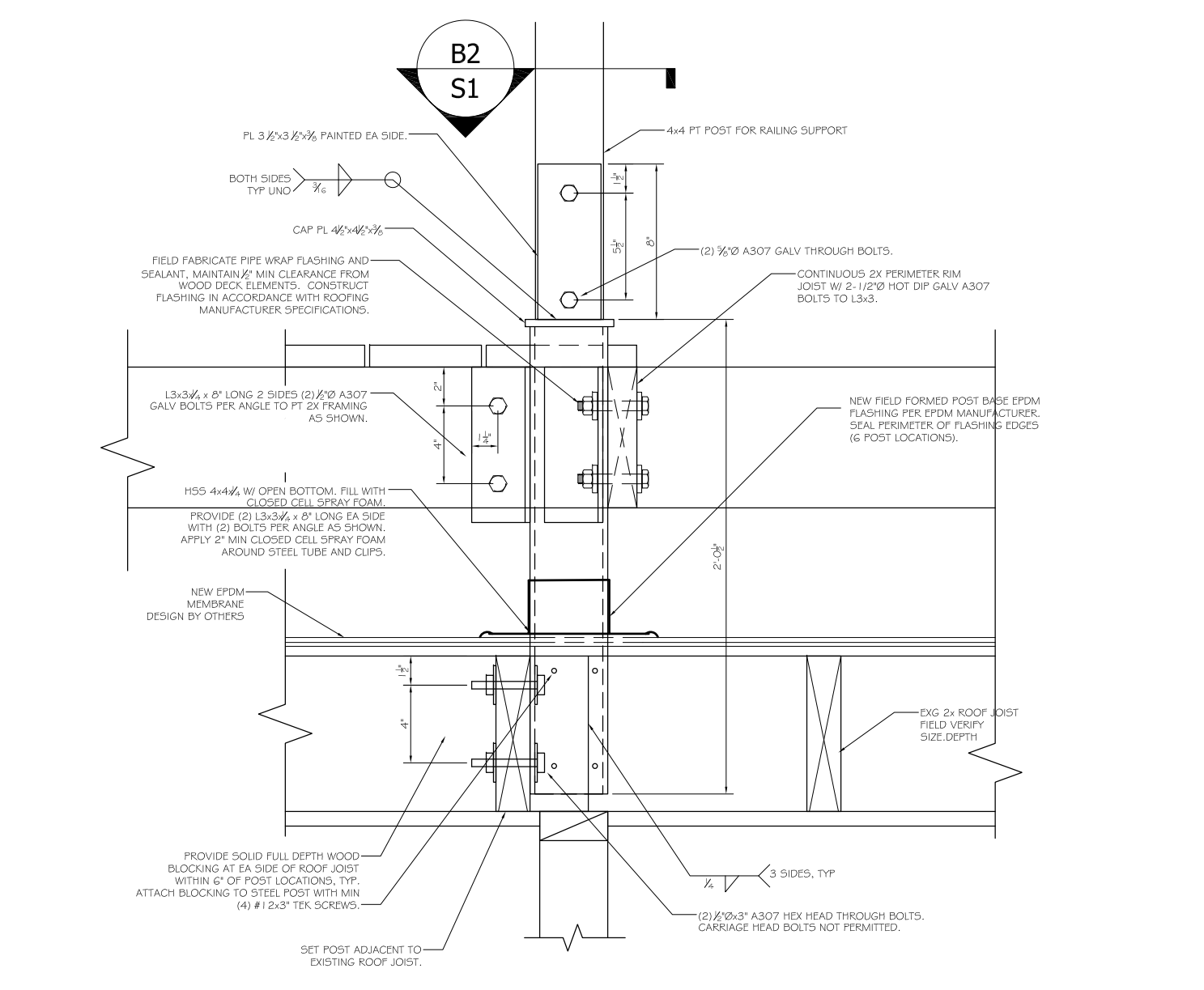
**B1** 2ND FLOOR STAIR FRAMING PLAN  
 SCALE: 3/8" = 1'-0"



**B2** POST DETAIL  
 SCALE: 1 1/2" = 1'-0"



**A1** 1ST FLOOR STAIR FRAMING PLAN  
 SCALE: 3/8" = 1'-0"



**A2** POST DETAIL  
 SCALE: 1 1/2" = 1'-0"



**A3**