

**ASSOCIATED DESIGN PARTNERS INC.**

Office: (207) 878-1751  
 Fax: (207) 878-1788  
 E-Mail: [atp@adpengineering.com](mailto:atp@adpengineering.com)

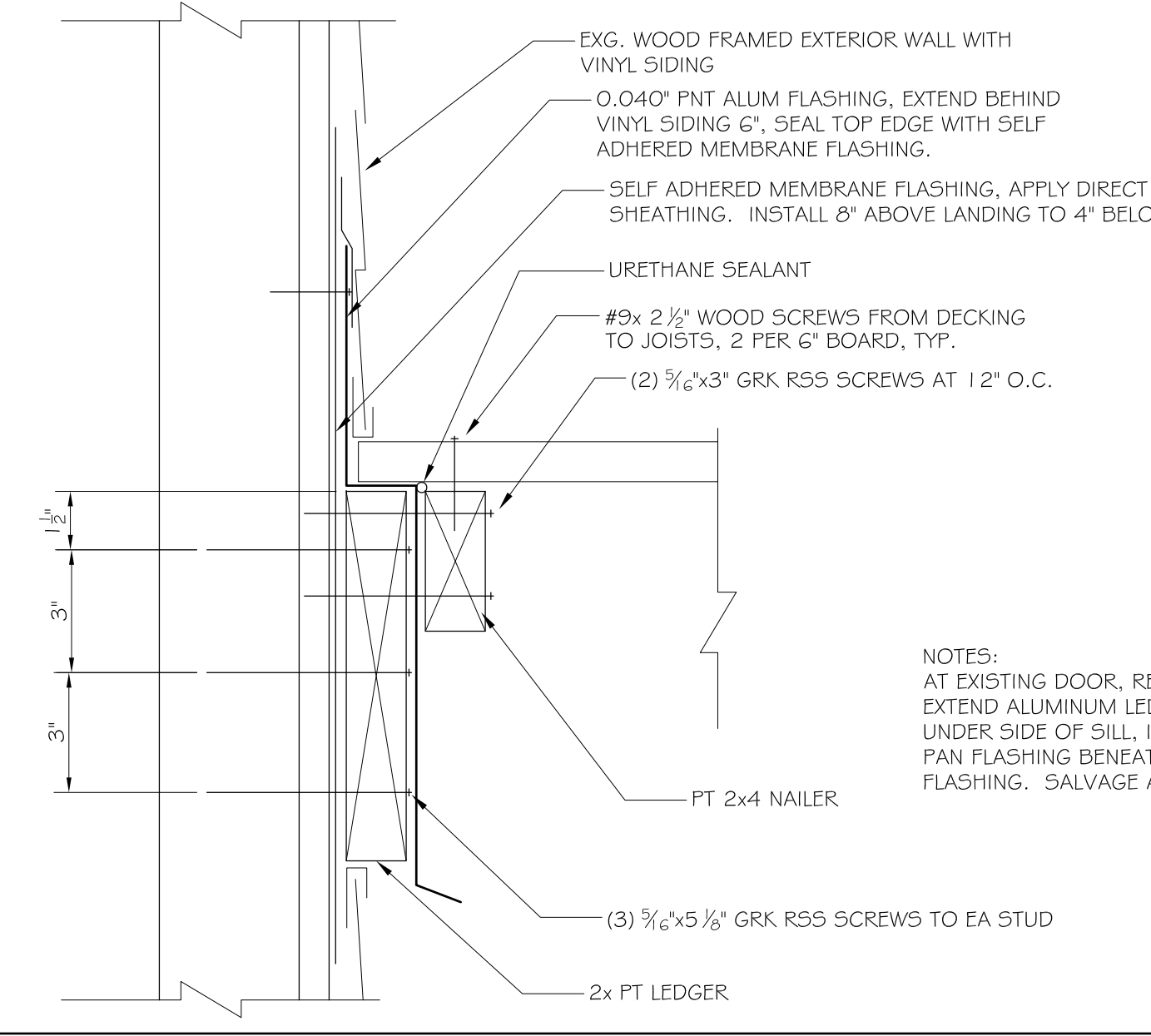
THIS DRAWING, DESIGN AND ELECTRONIC FILE ARE THE PROPERTY OF ASSOCIATED DESIGN PARTNERS, INC. THE REPRODUCTION, COPYING OR ANY OTHER USE OF THIS DOCUMENT WITHOUT WRITTEN CONSENT IS PROHIBITED.

PROJECT: **158 CUMBERLAND AVE**  
**PORTLAND, MAINE**

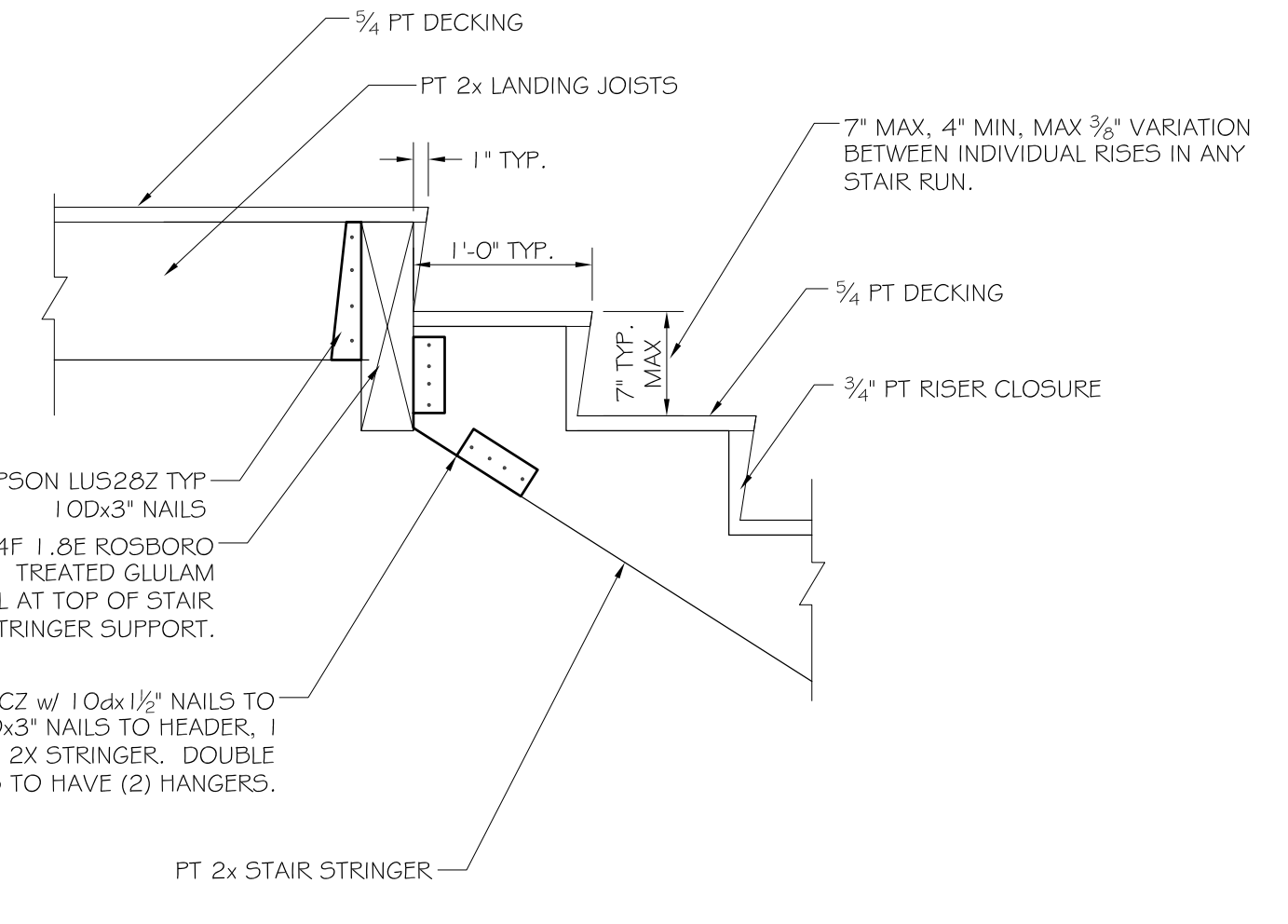
SHEET TITLE: **STAIR DETAILS**  
**ISSUED FOR PERMITTING**

NO.	BY	DATE	DESCRIPTION

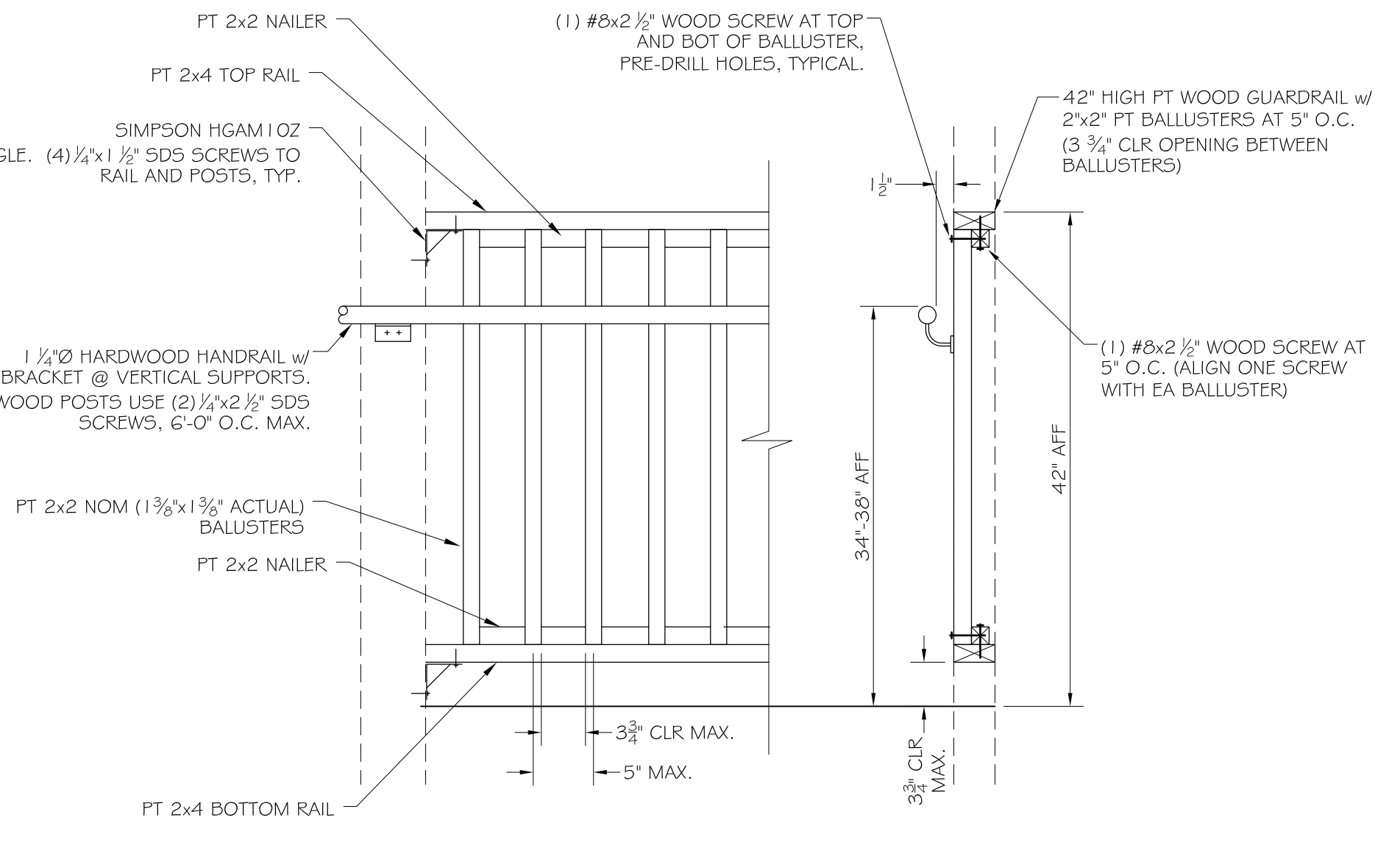
DATE : 11-18-16  
 SCALE : AS NOTED  
 DESIGN BY: ASW  
 DRAWN BY: RSC  
 FILE #:  
 PROJECT NUMBER:  
**16241**  
 SHEET NO:  
**A3**



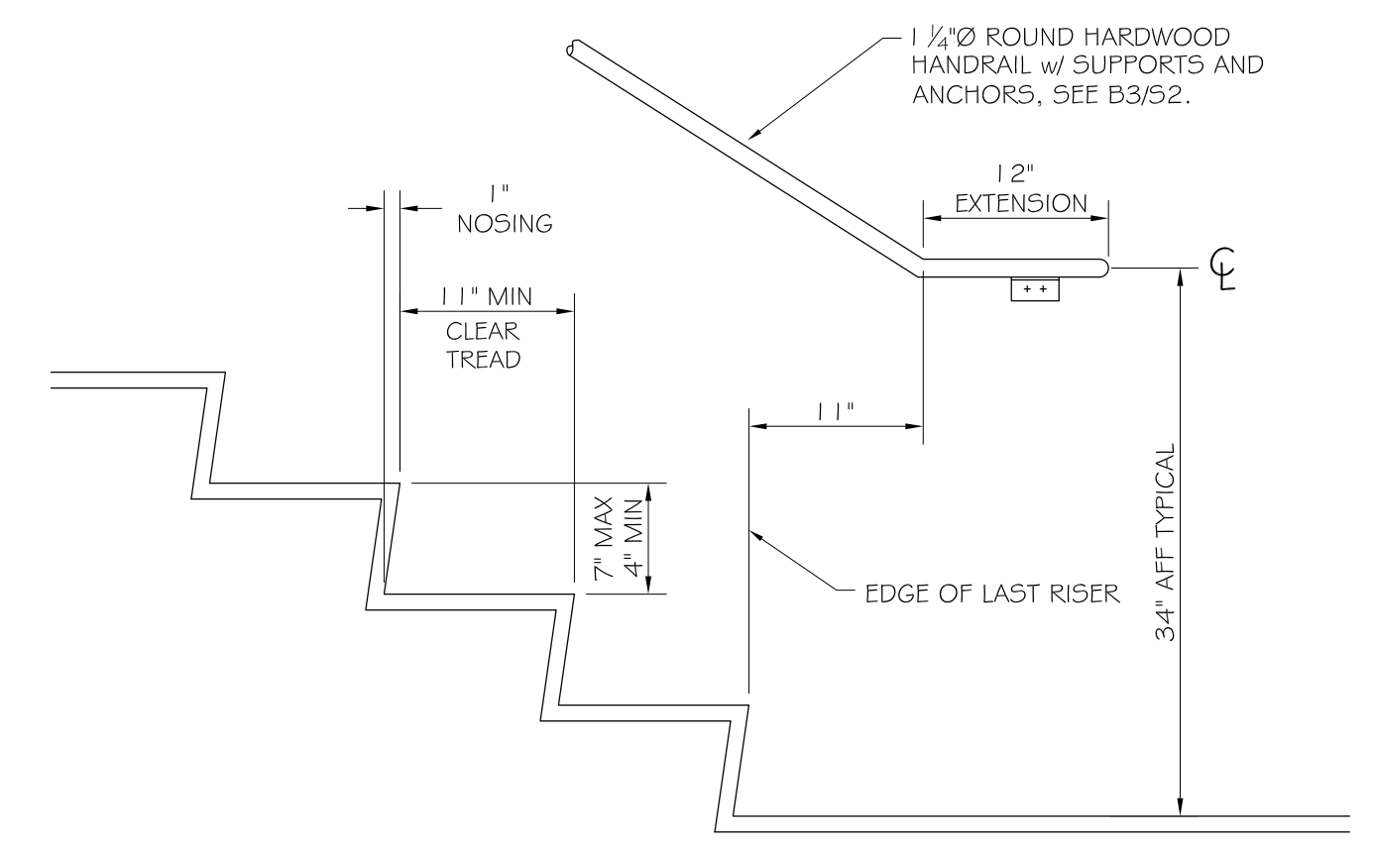
**C2** LEDGER TO WALL CONNECTION DETAIL  
 SCALE: 3"=1'-0"



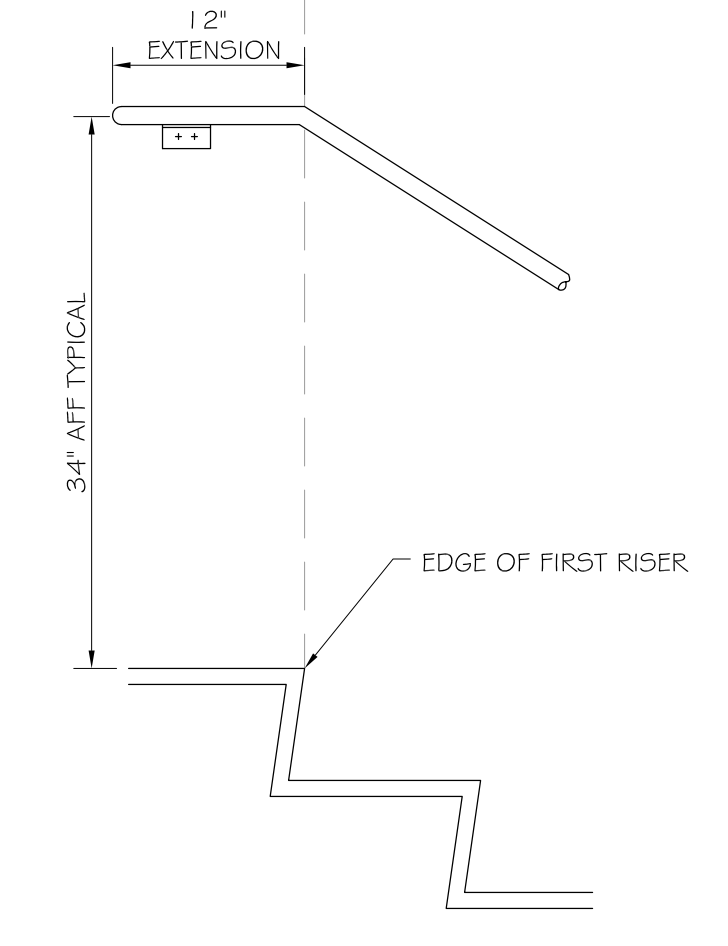
**C3** STRINGER ATTACHMENT DETAIL AT LANDING  
 SCALE: 1"=1'-0"



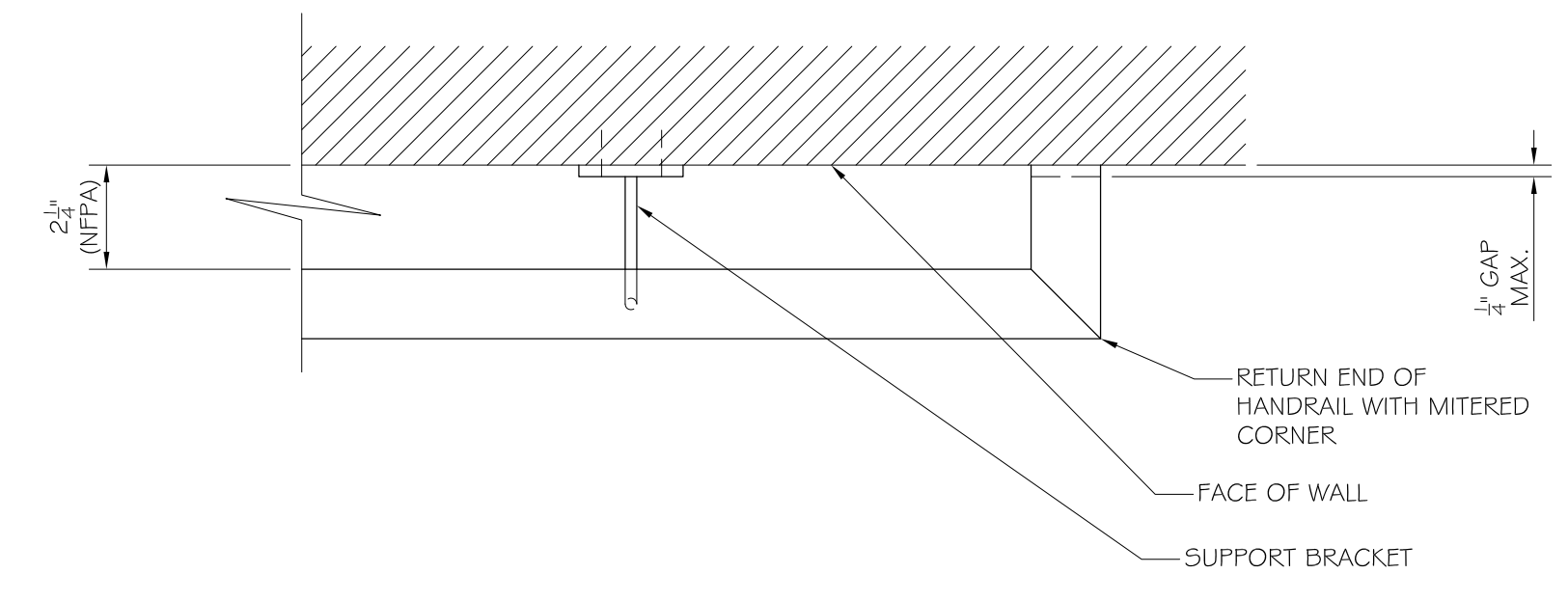
**B3** HAND/GUARDRAIL DETAIL  
 SCALE: 1"=1'-0"



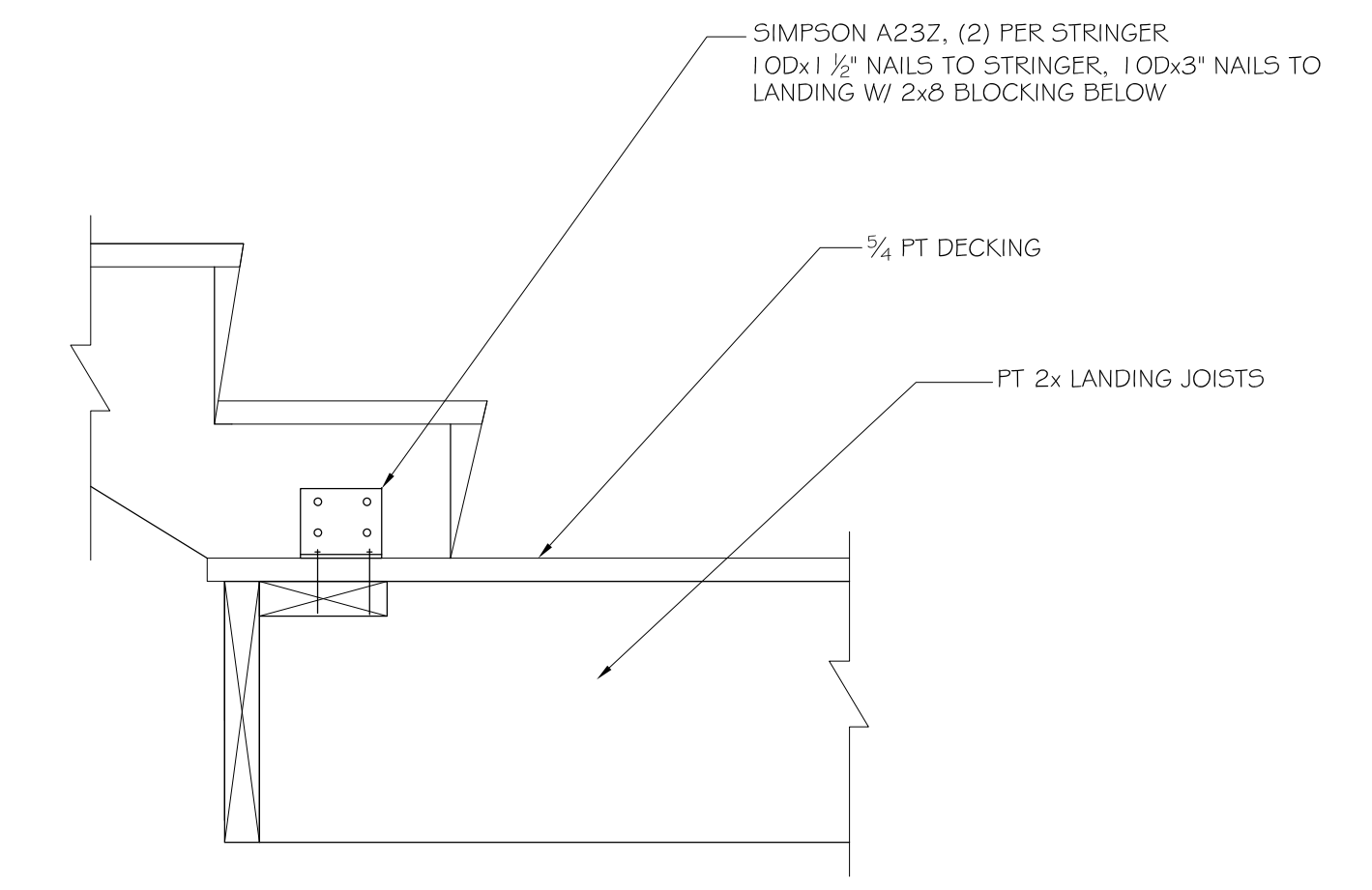
**B2** HANDRAIL TERMINATION AT BASE OF STAIRS  
 SCALE: 1"=1'-0"



**B1** HANDRAIL TERMINATION AT TOP OF STAIRS  
 SCALE: 1"=1'-0"



**A2** HANDRAIL TERMINATION AT WALL  
 SCALE: 3"=1'-0"



**A1** STRINGER CONNECTION AT LANDING  
 SCALE: 1"=1'-0"

**A3**